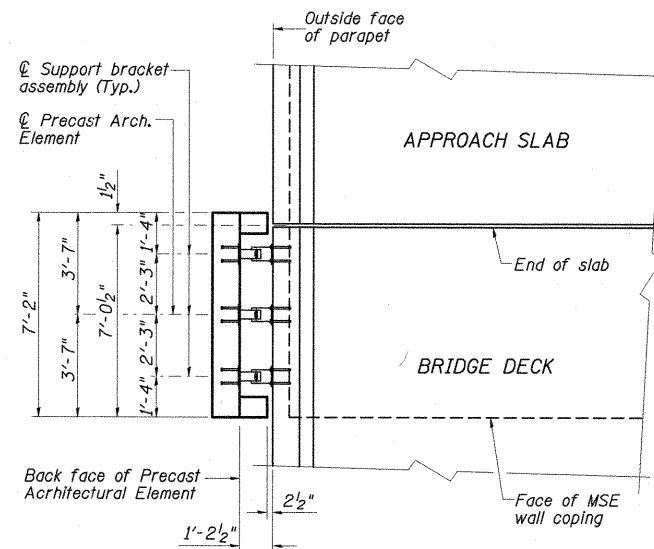
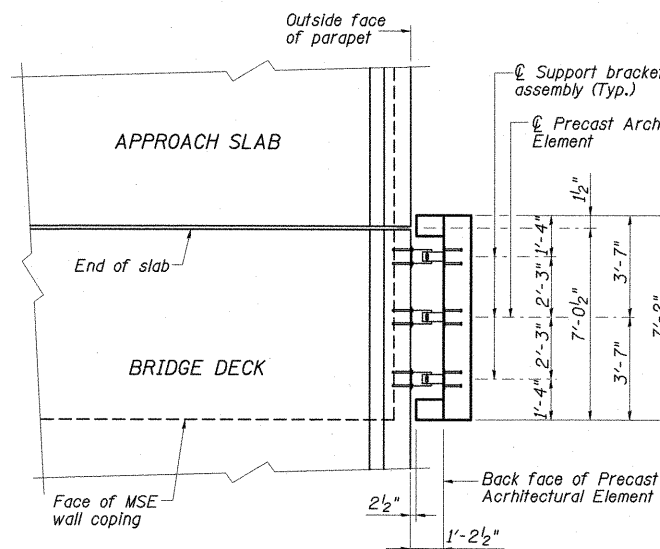


**PART ELEVATION OF
PRECAST ARCHITECTURAL ELEMENT**



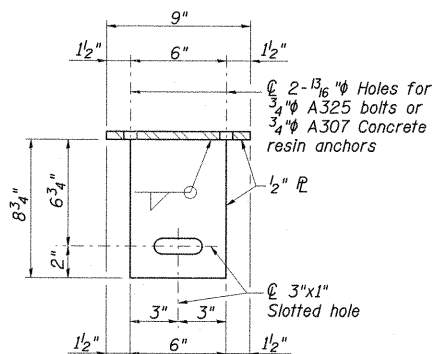
**PART PLAN OF
PRECAST ARCHITECTURAL ELEMENT**

S.N. 100-0096 (West shown)
S.N. 100-0095 (West similar)

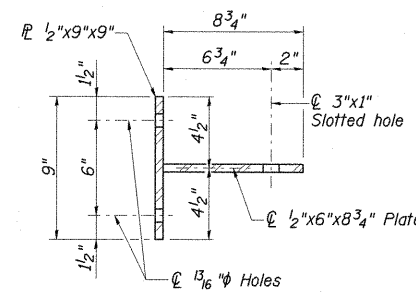


**PART PLAN OF
PRECAST ARCHITECTURAL ELEMENT**

S.N. 100-0096 (East shown)
S.N. 100-0095 (East similar)

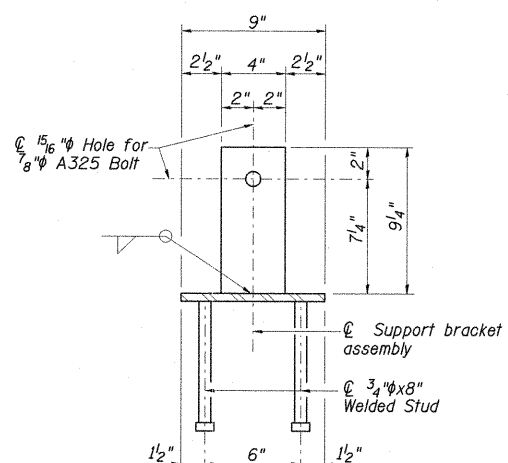


PLAN

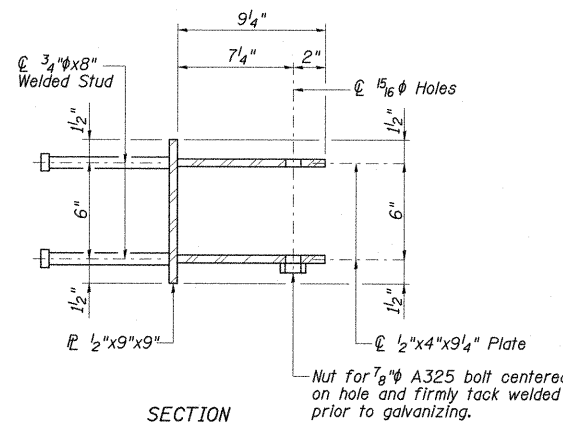


SECTION

PARAPET



PLAN



SECTION

PRECAST ARCHITECTURAL ELEMENT

SUPPORT BRACKET DETAILS

**S.N. 100-0095 (W.B.)
BILL OF MATERIAL**

Bar	No.	Size	Length	Shape
t ₁₀ (E)	40	#5	4'-11"	---
w ₁₀ (E)	24	#5	9'-2"	---
*Concrete Structures				
			Cu. Yd.	7.4
*Reinforcement Bars, Epoxy Coated			Pound	440
Precast Architectural Element (7'-6")			Each	2
Anti-Graffiti Protection System			Sq. Ft.	398

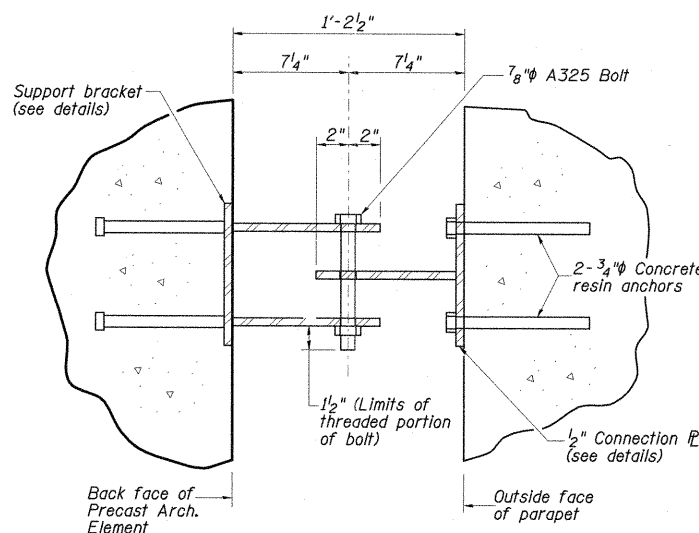
**S.N. 100-0096 (E.B.)
BILL OF MATERIAL**

Bar	No.	Size	Length	Shape
t ₁₀ (E)	40	#5	4'-11"	---
w ₁₀ (E)	24	#5	9'-2"	---
*Concrete Structures				
			Cu. Yd.	7.4
*Reinforcement Bars, Epoxy Coated			Pound	440
Precast Architectural Element (7'-6")			Each	2
Anti-Graffiti Protection System			Sq. Ft.	425

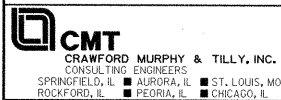
* Quantities for information purposes only.
Footings shall be constructed and paid for with S.N. 100-W002 & S.N. 100-W003.

Notes:

- All reinforcement shall be epoxy coated.
- All plates and bars in the Support Bracket Assembly shall conform to ASTM A 709 Gr 36.
- All plates, bars, bolts, plate washers and nuts in the Support Bracket Assembly shall be galvanized according to AASHTO M111 or M232 as applicable.
- The contractor shall use one of the qualified resin anchor systems in accordance with Art. 1027.01.
- The 3/4 inch diameter resin anchor system shall have a minimum ultimate pullout strength of 20,400 lbs. in concrete with f'_c=4000 psi.
- See Sheet 28 for Color Chart.



DETAIL C



FILE NAME =	USER NAME =	DESIGNED - SF	REVISED -
1:\dot\0906603\draw\cadd\sheet\structure\al\plans\marathon dr bridge\marathon_final		CHECKED - ARCHIT	REVISED -
		DRAWN - GLD	REVISED -
		CHECKED - SF	REVISED -

**STATE OF ILLINOIS
DEPARTMENT OF TRANSPORTATION**

**PRECAST ARCHITECTURAL ELEMENT (SHEET 2)
STRUCTURE NO. 100-0095 (W.B.) & 100-0096 (E.B.)**

SHEET NO. 29 OF 32 SHEETS

F.A.P. RTE.	SECTION	COUNTY	TOTAL SHEETS	SHEET NO.
331 (1X-1) VB-1, B-1, N-4, R-3		WILLIAMSON	367	236
			CONTRACT NO. 98859	
ILLINOIS FED. AID PROJECT				