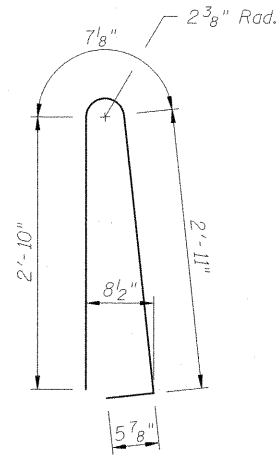


DETAIL A

* The M.S.E. wall supplier's internal stability design shall account for the anchorage slab's bearing pressure surcharge of 1.0 ksf and horizontal sliding force of 0.5 kips/ft. of wall.



BAR d200(E)

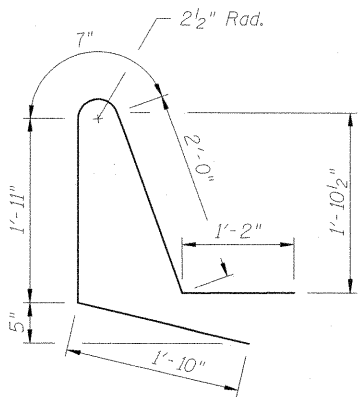
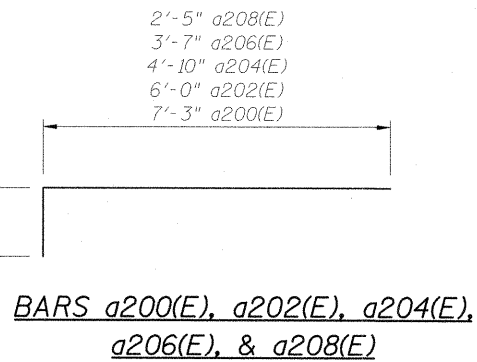
Reinforcement bars designated (E) shall be epoxy coated.

Slipforming of the parapets is not allowed.

Moment slab joints shall be sealed in accordance with Art. 420.05.

All work including dowel bars, joint filler, joint sealer, and expansion cap necessary to complete the construction of joints will be included for payment in the contract unit price for Concrete Superstructure.

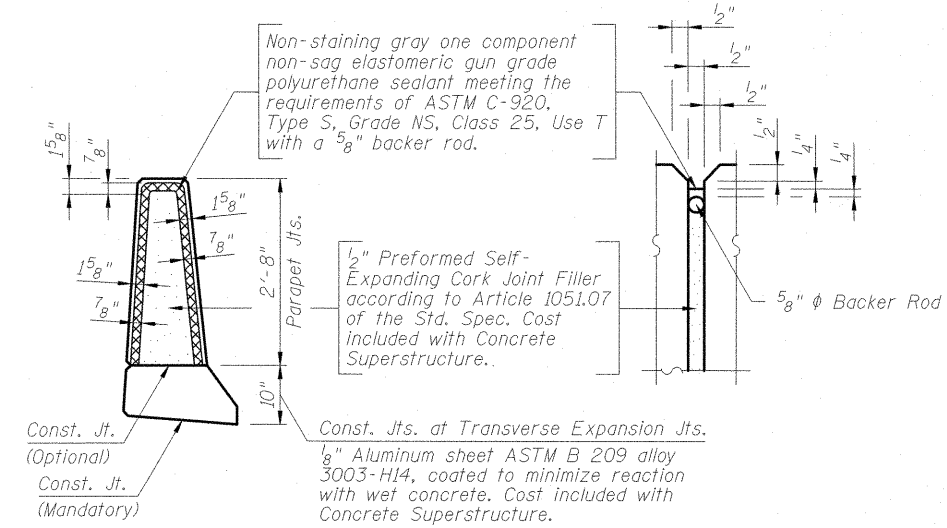
For location of joints and reinforcing details in parapet and moment slab, see Sheets 9 thru 12 of 21.



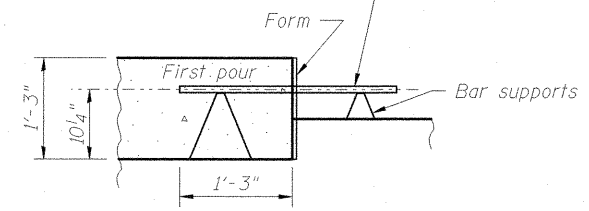
BAR d201(E)

**MOMENT SLAB/PARAPET
BILL OF MATERIAL**

Bar	No	Size	Length	Shape
a200(E)	748	#6	8'-8"	
a201(E)	748	#6	7'-3"	
a202(E)	1	#6	7'-5"	
a203(E)	1	#6	6'-0"	
a204(E)	1	#6	6'-3"	
a205(E)	1	#6	4'-10"	
a206(E)	1	#6	5'-0"	
a207(E)	1	#6	3'-7"	
a208(E)	1	#6	3'-10"	
a209(E)	1	#6	2'-5"	
a210(E)	2	#6	5'-0"	
a211(E)	2	#6	3'-9"	
a212(E)	2	#6	2'-6"	
a213(E)	748	#6	2'-6"	
b200(E)	85	#4	26'-3"	
b201(E)	340	#4	14'-6"	
b202(E)	17	#4	13'-5"	
b203(E)	136	#4	26'-9"	
b204(E)	51	#4	12'-0"	
b205(E)	51	#4	27'-3"	
d200(E)	837	#5	6'-10"	
d201(E)	837	#5	7'-6"	
e200(E)	5	#4	25'-11"	
e201(E)	4	#8	34'-3"	
e202(E)	8	#4	27'-10"	
e203(E)	7	#8	34'-3"	
e204(E)	4	#4	26'-5"	
e205(E)	4	#8	28'-9"	
e206(E)	4	#4	26'-5"	
e207(E)	4	#8	28'-9"	
e208(E)	5	#4	30'-0"	
e209(E)	5	#8	32'-7"	
e210(E)	3	#4	27'-3"	
e211(E)	3	#8	29'-4"	
e212(E)	42	#4	19'-9"	
e213(E)	140	#4	14'-6"	
e214(E)	7	#4	13'-5"	
e215(E)	70	#4	19'-6"	
e216(E)	21	#4	12'-0"	
e217(E)	28	#4	19'-0"	
Concrete Superstructure		Cu. Yd.	353.8	
Reinforcement Bars, Epoxy Coated		Lb.	48,270	



PARAPET JOINT DETAILS

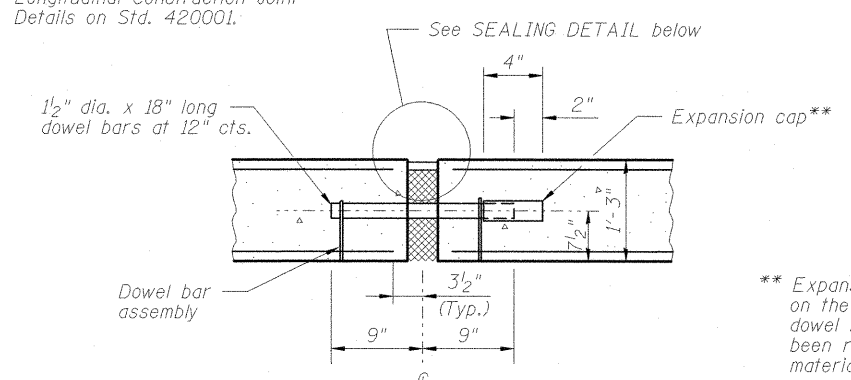


CONSTRUCTION JOINT

Note: Joint to be sawed and sealed in accordance with the Longitudinal Construction Joint Details on Std. 420001.

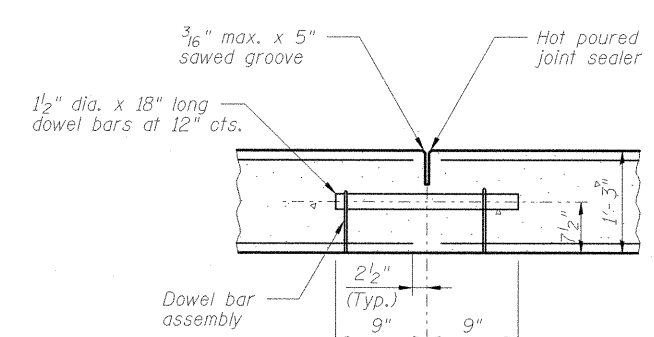
MINIMUM BAR LAPS

Bar	Lap
#4 (Moment Slab)	2'-3"
#4 (Parapet)	2'-0"
#8 (Parapet)	5'-2"

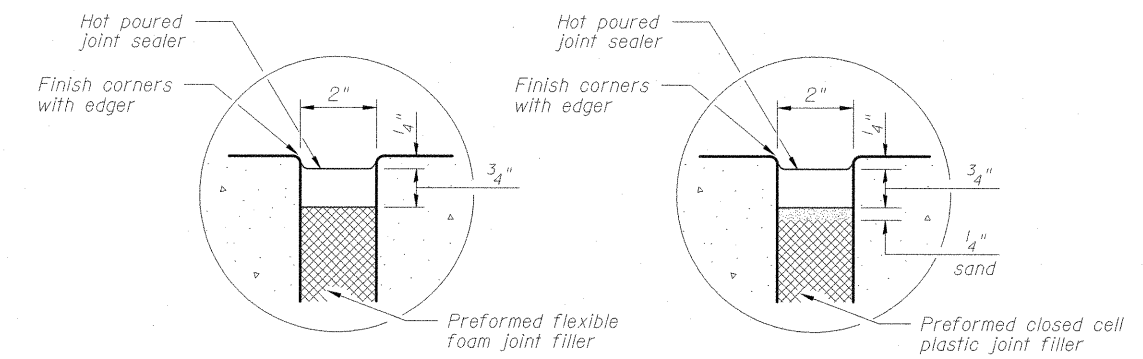


TRANSVERSE EXPANSION JOINT

** Expansion caps shall be installed on the exposed end of each dowel bar once the header has been removed and the joint filler material has been installed.



TRANSVERSE CONTRACTION JOINT



SEALING DETAIL

CMT
CRAWFORD MURPHY & TILLY, INC.
CONSULTING ENGINEERS
SPRINGFIELD, ILL. ■ AURORA, ILL. ■ ST. LOUIS, MO
ROCKFORD, ILL. ■ PEORIA, ILL. ■ CHICAGO, ILL.

FILE NAME = L:\IDOT\0906683\Draw\CADD_Sheets\STRUCTURAL PLANS\MSE WALLS\100-W002\100W002-98859-008-Slab-Parapet.dgn	USER NAME = Gary Davis	DESIGNED - JMW	REVISIONS -
		CHECKED - REB	REVISIONS -
		DRAWN - AJK	REVISIONS -
		CHECKED - REB	REVISIONS -

**STATE OF ILLINOIS
DEPARTMENT OF TRANSPORTATION**

**MOMENT SLAB AND PARAPET DETAILS
STRUCTURE NO. 100-W002**

F.A.P. RTE. 331	SECTION (1X-1) VB-1, B-1, N-4, R-3	COUNTY WILLIAMSON	TOTAL SHEETS 367	SHEET NO. 264
CONTRACT NO. 98859				ILLINOIS FED. AID PROJECT