

4" Preformed Joint Seal  
(See S.N. 100-0096 for details)

Sta. 1751+77.71  
Offset 69.58' Rt.  
(Bk. of Parapet)

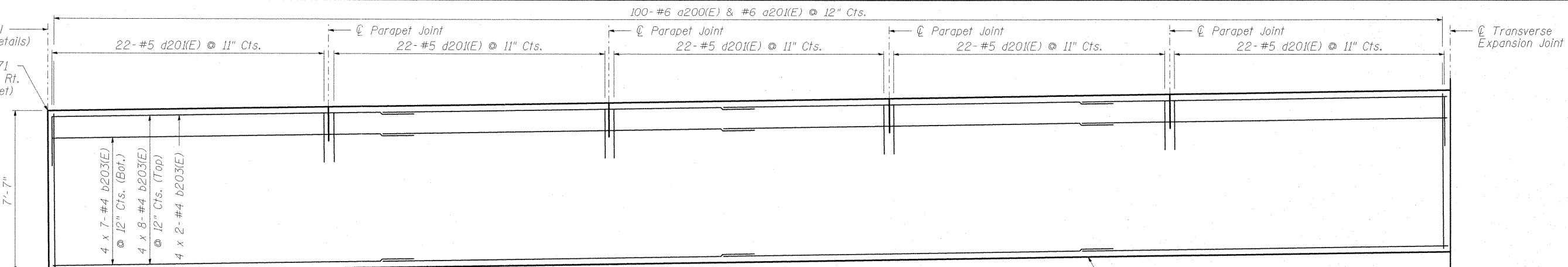
**MINIMUM BAR LAPS**

Bar	Lap
#4 (Moment Slab)	2'-3"
#4 (Parapet)	2'-0"
#8 (Parapet)	5'-2"

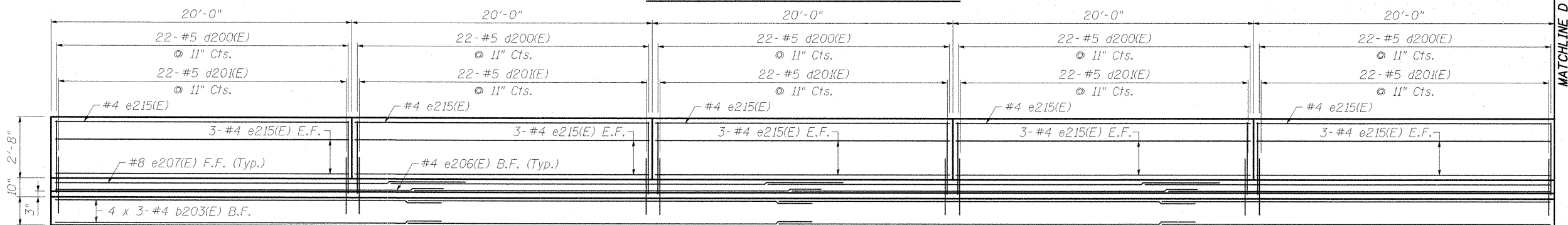
Reinforcement bars designated (E) shall be epoxy coated.

See sheet 8 of 21 for joint details.

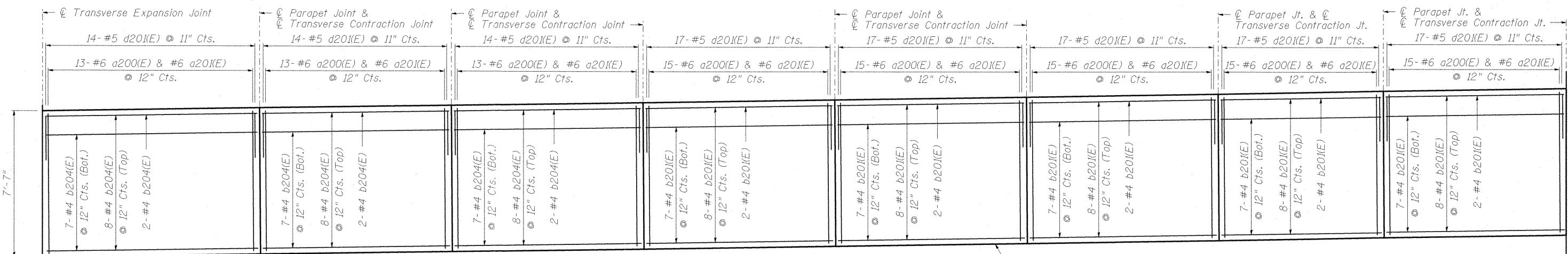
Longitudinal dimensions are measured horizontally along the back of the parapet.



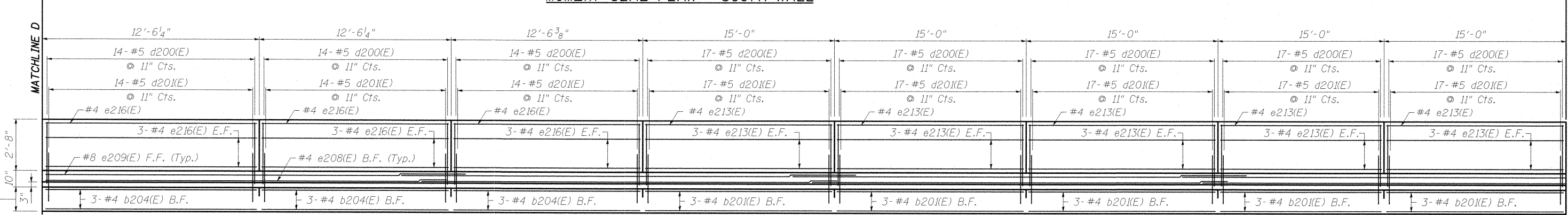
**MOMENT SLAB PLAN - SOUTH WALL**



**INSIDE SOUTH PARAPET ELEVATION**



**MOMENT SLAB PLAN - SOUTH WALL**



**INSIDE SOUTH PARAPET ELEVATION**

**CMT**  
CRAWFORD MURPHY & TILLY, INC.  
CONSULTING ENGINEERS  
SPRINGFIELD, ILL. ■ AURORA, ILL. ■ ST. LOUIS, MO  
ROCKFORD, ILL. ■ PEORIA, ILL. ■ CHICAGO, ILL.

FILE NAME = L:\1001\0906603\Draw\CADD\_Sheets\STRUCTURAL PLANS\MSE WALLS\100-W002\100W002-98859-011\_S.Parapet\_Elev.dgn  
USER NAME = Gary Davis  
DESIGNED - JMW  
CHECKED - REB  
DRAWN - AJK  
PLOT DATE = 1/10/2012

DESIGNED - JMW	REVISOR -
CHECKED - REB	REVISOR -
DRAWN - AJK	REVISOR -
CHECKED - REB	REVISOR -

**STATE OF ILLINOIS  
DEPARTMENT OF TRANSPORTATION**

**JOINT AND REINFORCING DETAILS  
STRUCTURE NO. 100-W002**

SHEET NO. 11 OF 21 SHEETS

F.A.P. RTE. 331	SECTION (1X-1) VB-1, B-1, N-4, R-3	COUNTY WILLIAMSON	TOTAL SHEETS 367	SHEET NO. 267
CONTRACT NO. 98859			ILLINOIS FED. AID PROJECT	

MATCHLINE E SEE SHEET 12 OF 21