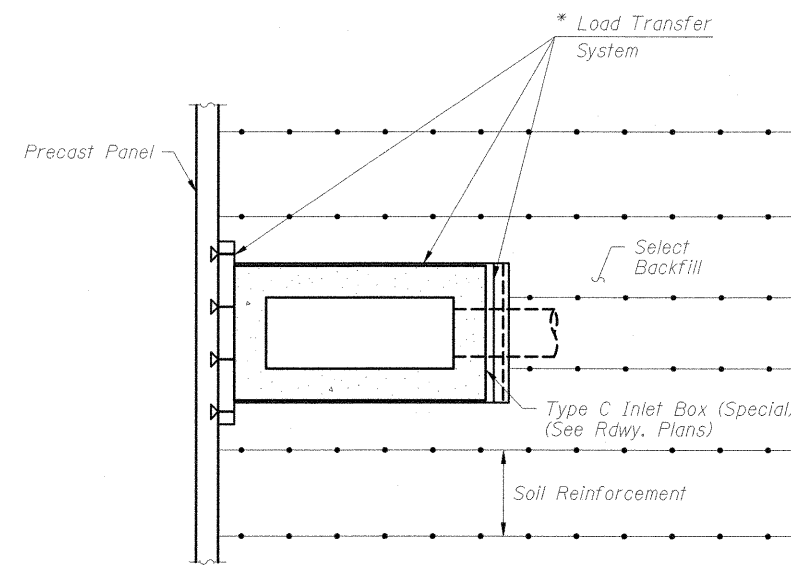


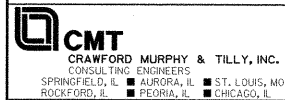
Reinforcing in moment slab, parapet and drainage structure not shown for clarity.

**LOAD TRANSFER SYSTEM  
AROUND DRAINAGE DETAIL**  
Sta. 1751+95.00 (North Wall)

\* M.S.E. supplier to design load transfer system to accommodate concrete pipe and inlet box.



**SECTION A-A**



FILE NAME = L:\1001\9906603\Draw\CH00\_Sheets\STRUCTURAL PLANS\WSE WALLS\100-W002\100W002-98859-015-Drainage.dgn

USER NAME = Gary Davis	DESIGNED - JMW	REVISED -
PLOT SCALE = 1/8" = 1'-0"	CHECKED - REB	REVISED -
PLOT DATE = 12/7/2011	DRAWN - AJK	REVISED -
	CHECKED - REB	REVISED -

**STATE OF ILLINOIS  
DEPARTMENT OF TRANSPORTATION**

**LOAD TRANSFER SYSTEM  
STRUCTURE NO. 100-W002**

SHEET NO. 15 OF 21 SHEETS

F.A.P. RTE.	SECTION	COUNTY	TOTAL SHEETS	SHEET NO.
331	(1X-1) VB-1, B-1, N-4, R-3	WILLIAMSON	367	271
			CONTRACT NO. 98859	
ILLINOIS FED. AID PROJECT				