

NOTES:

Wall offsets are measured from the CL 13 to the front face of MSE panels.

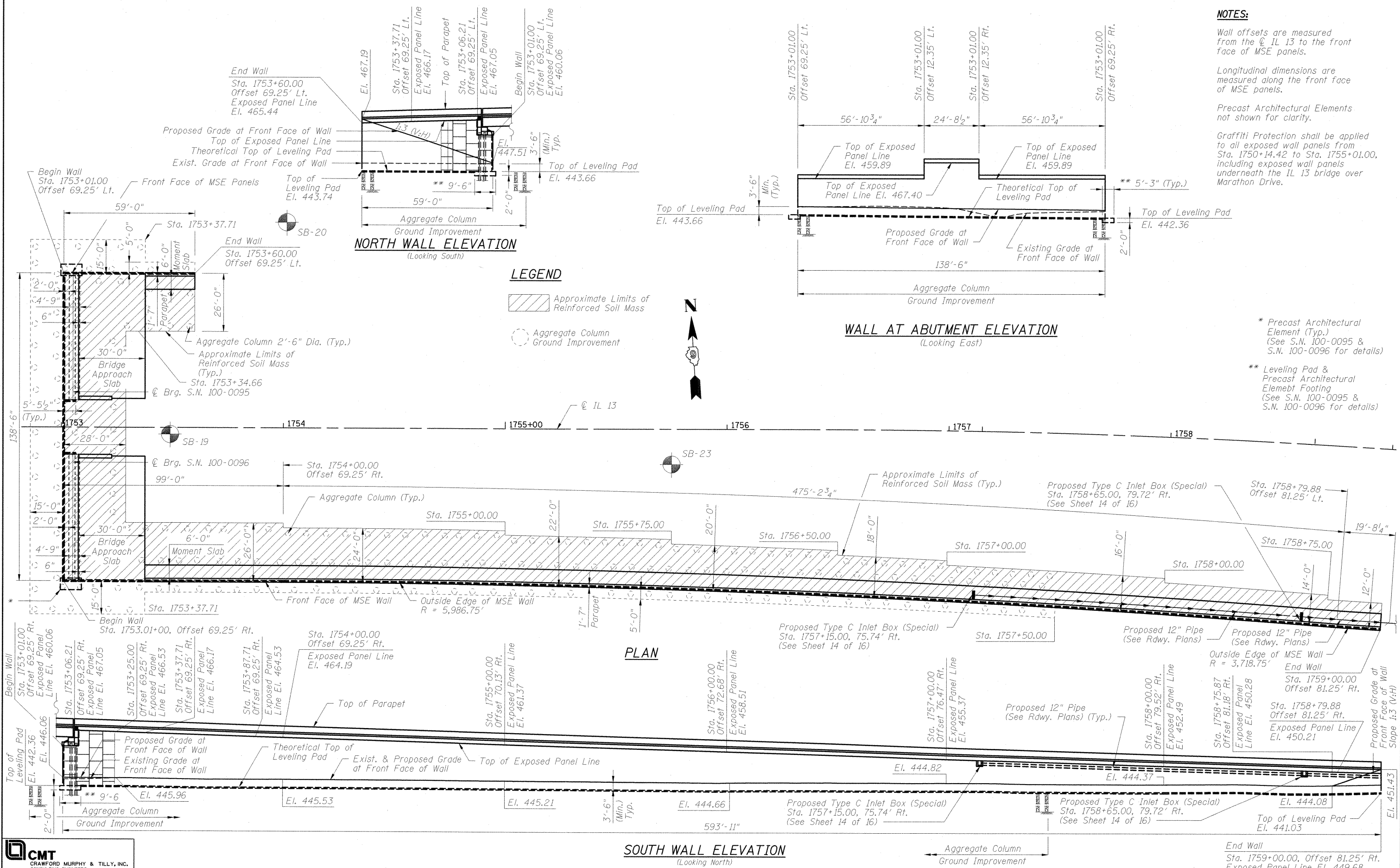
Longitudinal dimensions are measured along the front face of MSE panels.

Precast Architectural Elements not shown for clarity.

Graffiti Protection shall be applied to all exposed wall panels from Sta. 1750+14.42 to Sta. 1755+01.00, including exposed wall panels underneath the IL 13 bridge over Marathon Drive.

* Precast Architectural Element (Typ.) (See S.N. 100-0095 & S.N. 100-0096 for details)

** Leveling Pad & Precast Architectural Element Footing (See S.N. 100-0095 & S.N. 100-0096 for details)



LEGEND

- Approximate Limits of Reinforced Soil Mass
- Aggregate Column Ground Improvement



CMT
 CRAWFORD MURPHY & TILLY, INC.
 CONSULTING ENGINEERS
 SPRINGFIELD, IL ■ AURORA, IL ■ ST. LOUIS, MO
 ROCKFORD, IL ■ PEORIA, IL ■ CHICAGO, IL

FILE NAME = L:\IDDT\09066803\Draw\CADD_Sheets\STRUCTURAL PLANS\MSE WALLS\100-W003\100W003-98859-005-Elevs_Sects.dgn	USER NAME = OpenH&B Springfield	DESIGNED - JMW	REVISED -
PLOT SCALE = 28.0000' / IN.	DRAWN - AJK	CHECKED - REB	REVISED -
PLOT DATE = 12/13/2011	CHECKED - REB	DESIGNED - JMW	REVISED -

STATE OF ILLINOIS
DEPARTMENT OF TRANSPORTATION

WALL ELEVATIONS AND SECTIONS
STRUCTURE NO. 100-W003

SHEET NO. 5 OF 16 SHEETS

F.A.P. RTE.	SECTION	COUNTY	TOTAL SHEETS	SHEET NO.
331	(IX-1) VB-1, B-1, N-4, R-3	WILLIAMSON	367	282
CONTRACT NO. 98859			ILLINOIS FED. AID PROJECT	