

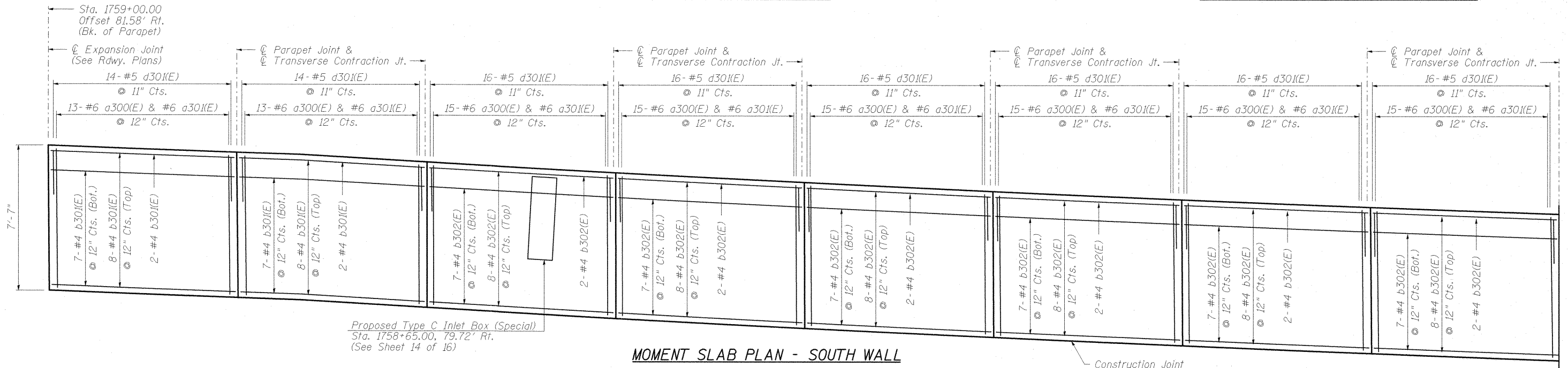
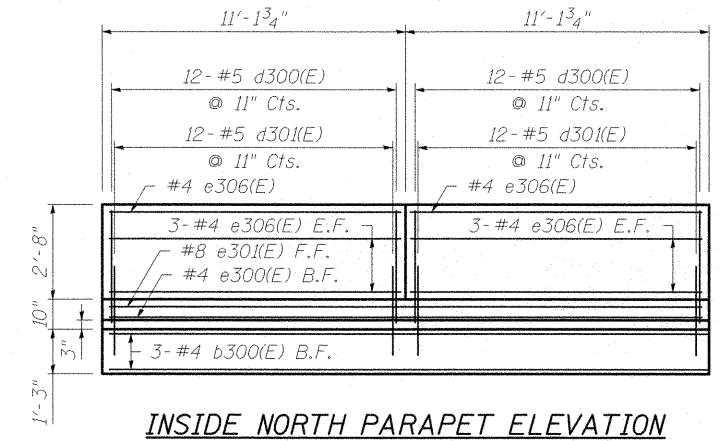
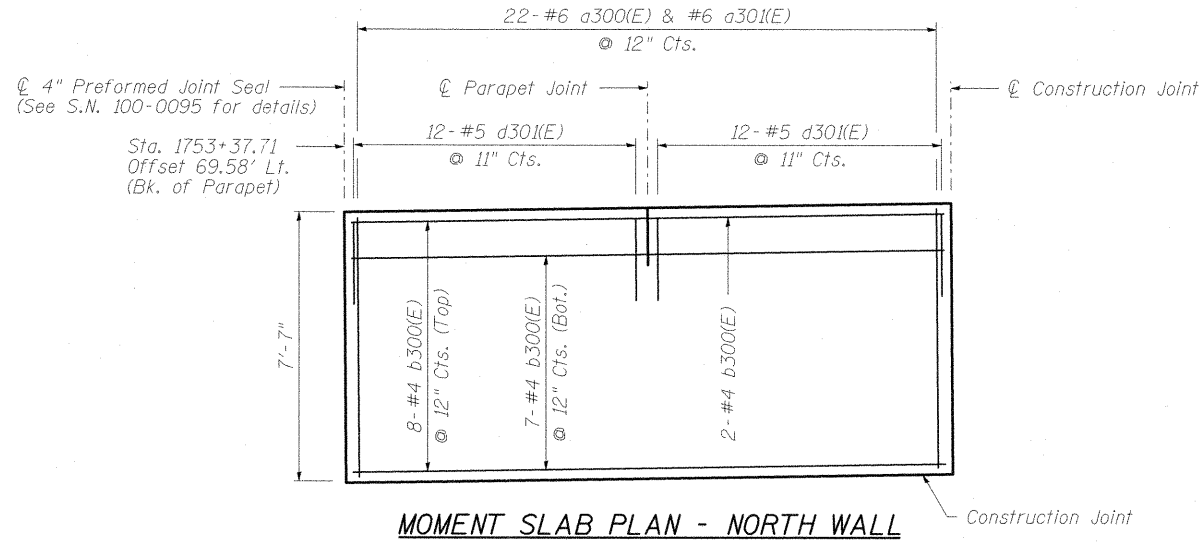
MINIMUM BAR LAPS

Bar	Lap
#4 (Moment Slab)	2'-3"
#4 (Parapet)	2'-0"
#8 (Parapet)	5'-2"

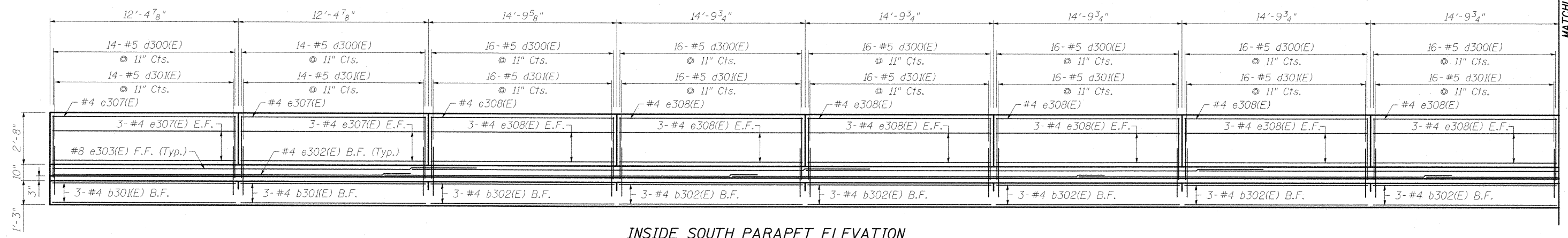
Reinforcement bars designated (E) shall be epoxy coated.

See sheet 8 of 16 for joint details.

Longitudinal dimensions are measured horizontally along the back of the parapet.



Proposed Type C Inlet Box (Special)
Sta. 1758+65.00, 79.72' Rt.
(See Sheet 14 of 16)



FILE NAME =	USER NAME = Gary Davis	DESIGNED - JMW	REVISED -
L:\DOT\0986603\Draw\CA00_Sheets\STRUCTURAL PLANS\MSE WALLS\100-W003\100W003-98659-009-NS-Parapet.Elev.dgn		CHECKED - REB	REVISED -
		DRAWN - AJK	REVISED -
		CHECKED - REB	REVISED -

**STATE OF ILLINOIS
DEPARTMENT OF TRANSPORTATION**

**JOINT AND REINFORCING DETAILS
STRUCTURE NO. 100-W003**

SHEET NO. 9 OF 16 SHEETS

F.A.P. RTE.	SECTION	COUNTY	TOTAL SHEETS	SHEET NO.
331	(1X-1) VB-1, B-1, N-4, R-3	WILLIAMSON	367	286
CONTRACT NO. 98859			ILLINOIS FED. AID PROJECT	

MATCHLINE A
SEE SHEET 10 OF 16