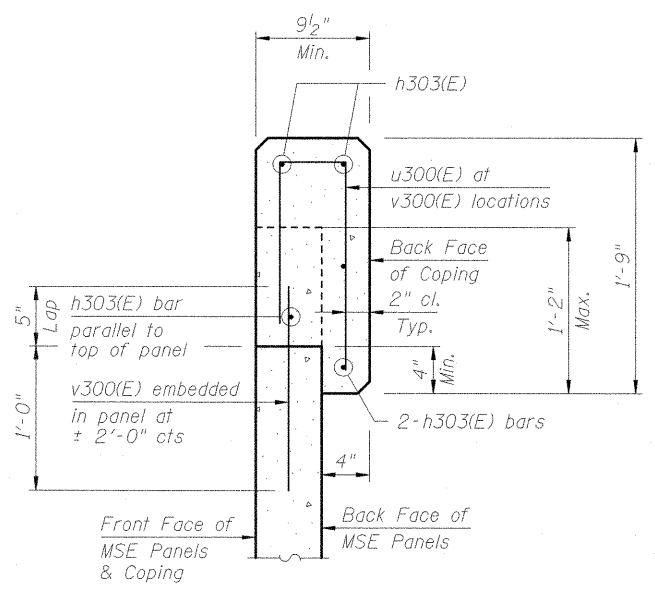
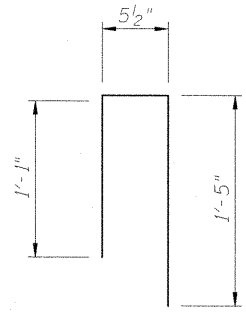


TYPICAL SECTION THRU COPING



SECTION A-A



BAR u300(E), u301(E)

MINIMUM BAR LAPS

Bar	Lap
#4	2'-3"

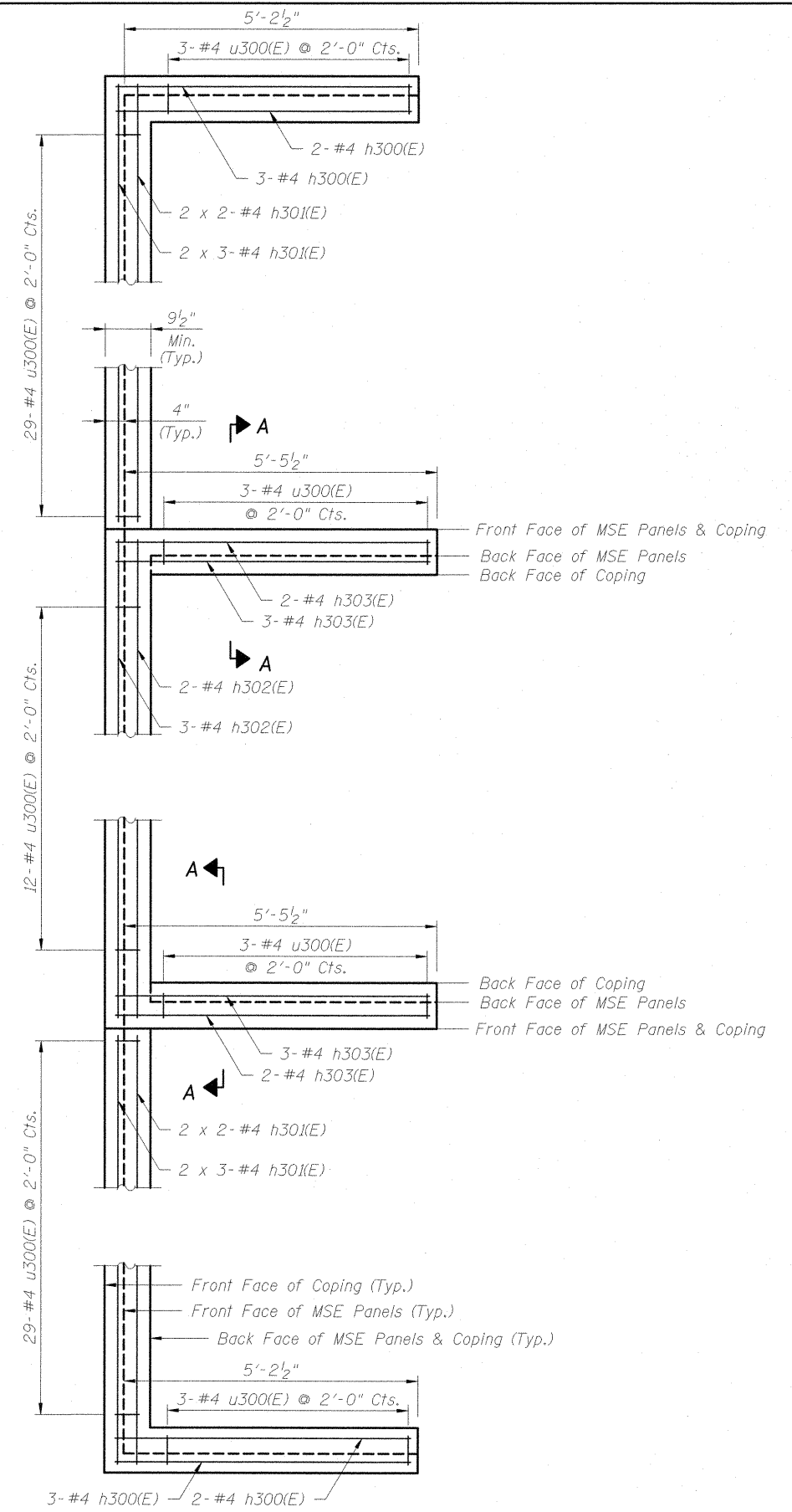
Reinforcement bars designated (E) shall be epoxy coated.

C.I.P. COPING
BILL OF MATERIAL

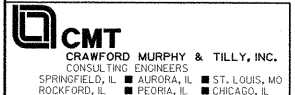
Bar	No.	Size	Length	Shape
h300(E)	10	#4	5'-1"	—
h301(E)	20	#4	30'-0"	—
h302(E)	5	#4	24'-4"	—
h303(E)	10	#4	5'-5"	—
u300(E)	82	#4	2'-11 1/2"	U
v300(E)	82	#4	1'-5"	—
Concrete Superstructure			Cu. Yd.	7.2
Reinforcement Bars, Epoxy Coated			Lb.	800

For information purposes only.

Cost of C.I.P. Coping will be included for payment in the contract unit price for Mechanically Stabilized Earth Retaining Wall.



COPING REINFORCING PLAN AT ABUTMENT



FILE NAME = L:\IDOT\0906603\Draw\CADD_Sheets\STRUCTURAL PLANS\MSE WALLS\100-W003\100W003-98859-012-Coping.dgn

USER NAME = Gary Davis	DESIGNED - JMW	REVISED -
PLOT SCALE = 1:8000 / IN.	CHECKED - REB	REVISED -
PLOT DATE = 1/10/2012	DRAWN - AJK	REVISED -
	CHECKED - REB	REVISED -

STATE OF ILLINOIS
DEPARTMENT OF TRANSPORTATION

C.I.P. COPING REINFORCING DETAILS
STRUCTURE NO. 100-W003

SHEET NO. 12 OF 16 SHEETS

F.A.P. RTE.	SECTION	COUNTY	TOTAL SHEETS	SHEET NO.
331	(1X-1) VB-1, B-1, N-4, R-3	WILLIAMSON	367	289
CONTRACT NO. 98859			ILLINOIS FED. AID PROJECT	