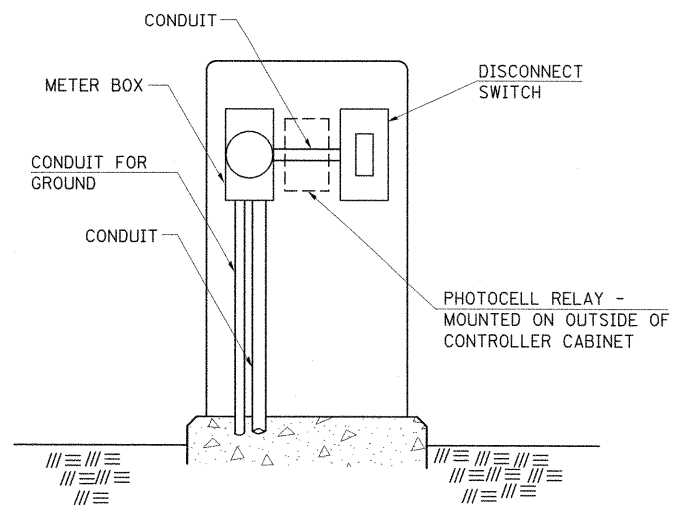
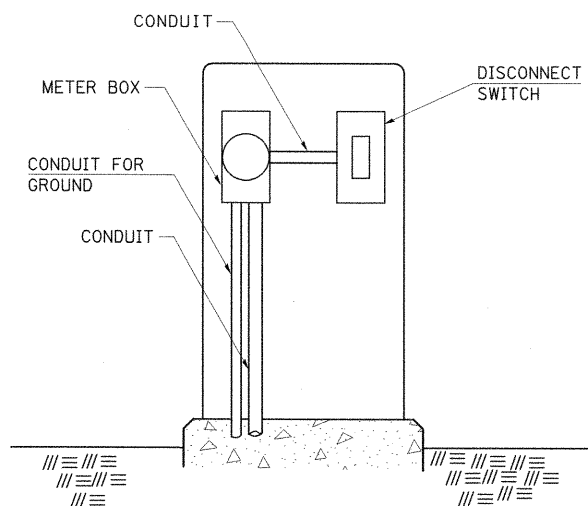


### SERVICE INSTALLATION DETAILS



SERVICE INSTALLATION (SPECIAL)  
WITH PHOTOCELL RELAY



SERVICE INSTALLATION (SPECIAL)

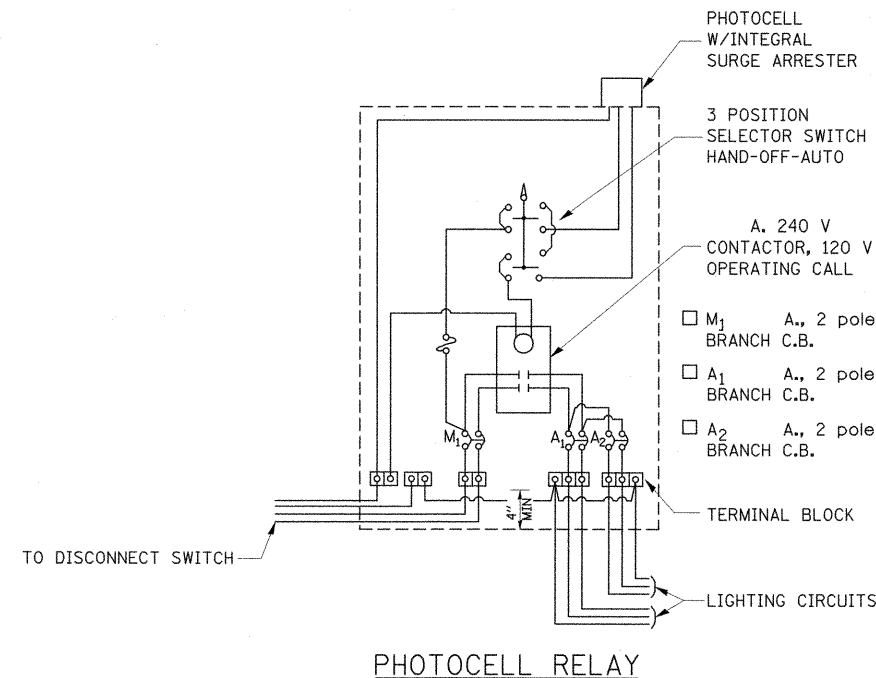
NOTE:  
MATERIAL AND SIZE OF CONDUIT  
AND CABLE AS REQUIRED BY  
UTILITY COMPANY

STD. 9-68

REVISIONS	
DRAWN	1-31-90
REVISED	2-24-92
RESIZED	5-7-08

### OUTDOOR LIGHTING CONTROL CABINET

(GROUND MOUNT CABINET ONLY)



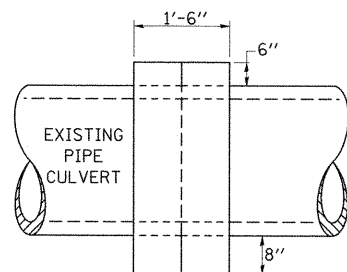
PHOTOCELL RELAY

STD. 9-76

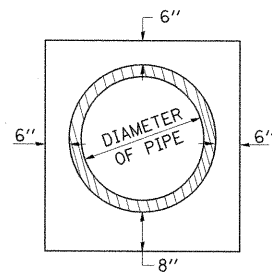
REVISIONS	
DRAWN	5-18-90
REVISED	5-13-02
REVISED	3-26-08
REVISED	

### DETAILS OF CONCRETE COLLAR

PIPE TO PIPE



SIDE VIEW



END VIEW

#### TABULATION

DIAMETER OF PIPE	CL SI CONC CU YDS EST
12"	0.24
15"	0.29
18"	0.32
24"	0.44
30"	0.56
36"	0.66
42"	0.80
48"	0.93
54"	1.07
60"	1.22
72"	1.55

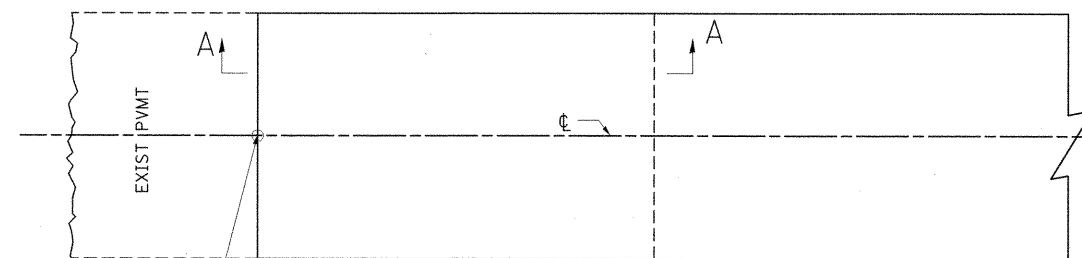
THE CONCRETE COLLAR SHALL BE PAID FOR AT THE CONTRACT UNIT PRICE PER CUBIC YARD FOR CONCRETE COLLAR, AS SHOWN ON THE PLANS, WHICH PRICE SHALL INCLUDE THE REMOVAL OF SUCH PORTIONS THE EXISTING HEADWALLS AS MAY BE REQUIRED.

CLASS SI CONCRETE SHALL BE USED THROUGHOUT.

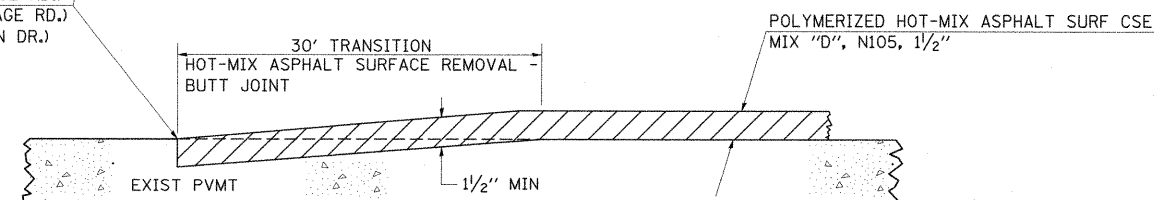
STD. 9-79

REVISIONS	
DRAWN	7-13-90
REVISED	8-22-94
REVISED	3-26-08
REVISED	

### BUTT JOINT



STA. 471+44.29 (FRONTAGE RD.)  
STA. 476+95.00 (FRONTAGE RD.)  
STA. 7+70.00 (MARATHON DR.)



SECTION A-A

STD. 9-86

REVISIONS	
DRAWN	10-17-90
REVISED	01-11-07
REVISED	3-25-08
REVISED	

FILE NAME =	USER NAME = OpenH&B Springfield	DESIGNED -	REVISED -
I:\dot\0906603\draw\cadd_sheets\099885\sheet-details.dgn		DRAWN -	REVISED -
PLOT SCALE = 50.0000' / IN.		CHECKED -	REVISED -
PLOT DATE = 12/12/2011		DATE - 12/9/11	REVISED -

STATE OF ILLINOIS  
DEPARTMENT OF TRANSPORTATION

DISTRICT DETAILS  
ILLINOIS ROUTE 13

F.A. RTE.	SECTION	COUNTY	TOTAL SHEETS	SHEET NO.
331	(1X-1) VB-1, B-1, N-4, R-3	WILLIAMSON	367	302
				CONTRACT NO. 98859
ILLINOIS FED. AID PROJECT				

SCALE: N/A SHEET NO. OF SHEETS STA. TO STA.