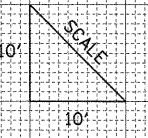
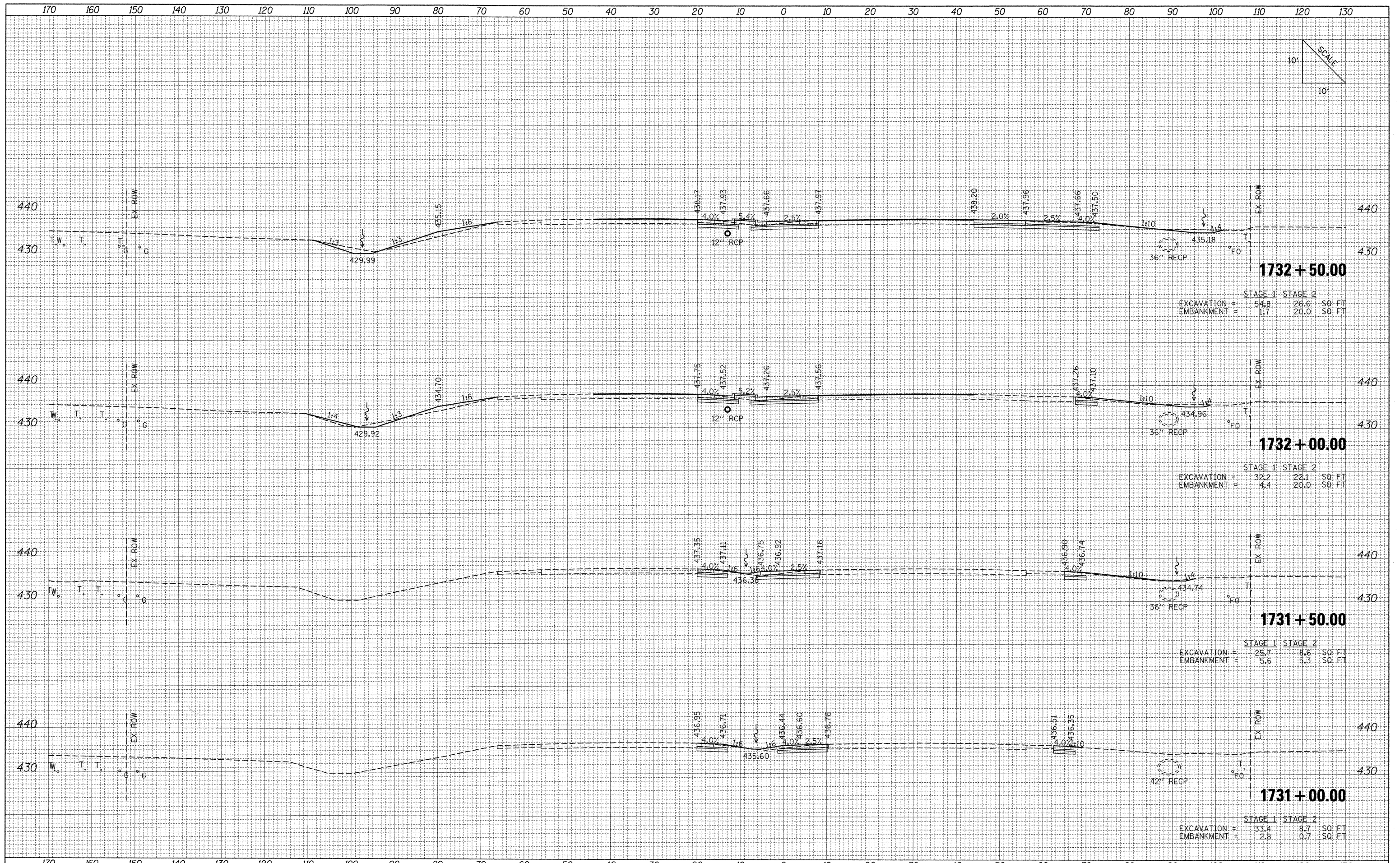


BY \_\_\_\_\_ DATE \_\_\_\_\_  
 FINISHED SURVEY SURVEYED PLOTTED  
 NOTE BOOK TEMPLATE AREAS CHECKED  
 NO. \_\_\_\_\_

BY \_\_\_\_\_ DATE \_\_\_\_\_  
 ORIGINAL SURVEY SURVEYED PLOTTED  
 NOTE BOOK TEMPLATE AREAS CHECKED  
 NO. \_\_\_\_\_



FILE NAME = L:\DOT\0906603\Draw\CAOD_Sheets\0998859-sht-IL13.dgn	USER NAME = OpenH8B Springfield	DESIGNED -	REVISED -	<b>STATE OF ILLINOIS DEPARTMENT OF TRANSPORTATION</b>	<b>PROPOSED CROSS SECTIONS IL ROUTE 13</b>			F.A. RTE. 331	SECTION (1X-1) VB-1, B-1, N-4, R-3	COUNTY WILLIAMSON	TOTAL SHEETS 367	SHEET NO. 308
PLOT SCALE = 10.0000 ' / IN.	PLOT DATE = 12/13/2011	DRAWN -	REVISED -		SCALE:	SHEET NO.	OF SHEETS	STA.	TO STA.	CONTRACT NO. 98859		
		CHECKED -	REVISED -		ILLINOIS FED. AID PROJECT							
		DATE = 12/9/11	REVISED -									