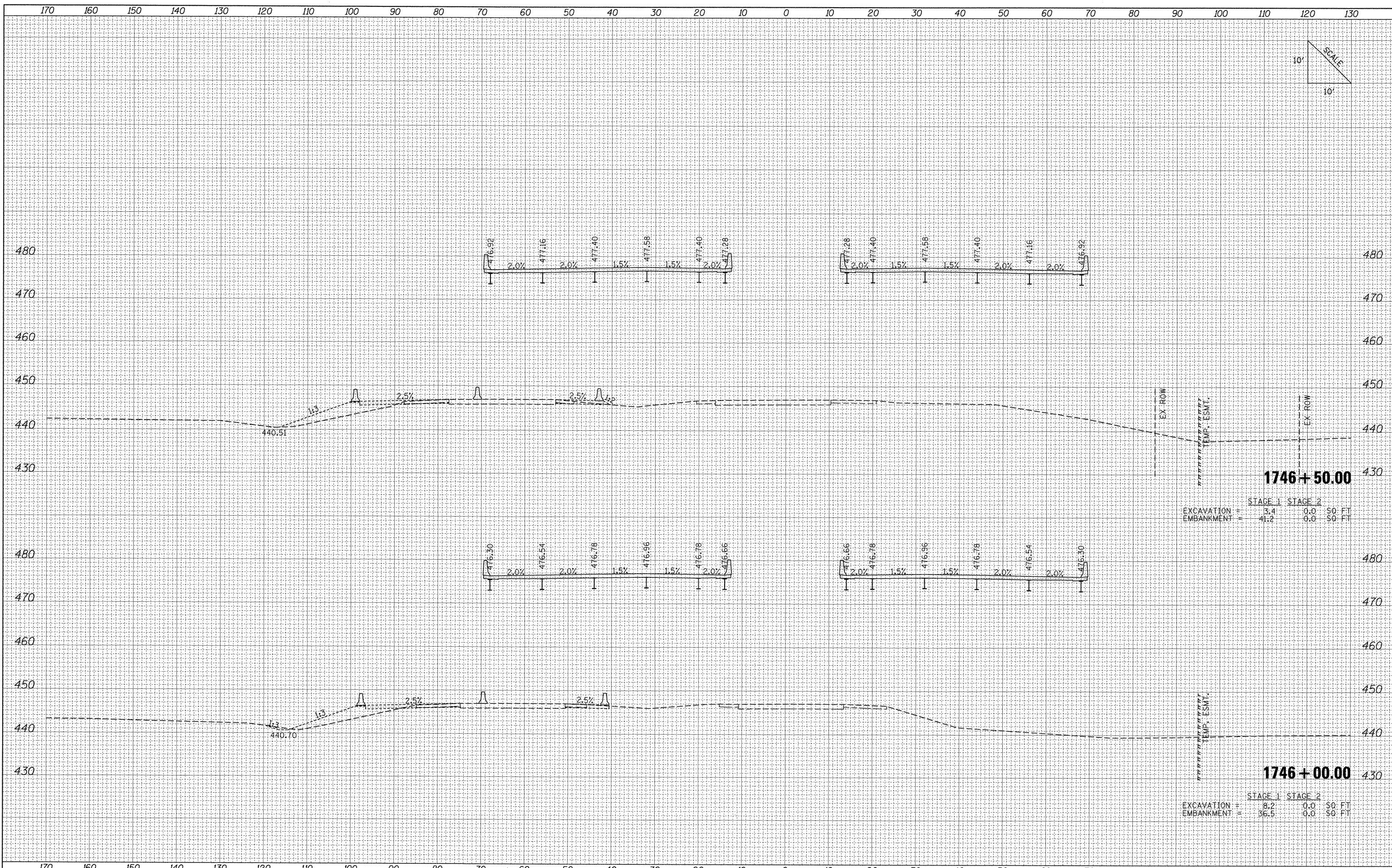
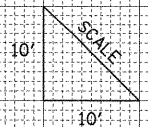


FINAL SURVEY	SURVEYED	BY	DATE
NOTE BOOK	PLOTTED		
NO.	AREAS		
	CHECKED		

ORIGINAL SURVEY	SURVEYED	BY	DATE
NOTE BOOK	PLOTTED		
NO.	AREAS		
	CHECKED		



	STAGE 1	STAGE 2
EXCAVATION =	3.4	0.0 \$0 FT
EMBANKMENT =	41.2	0.0 \$0 FT

	STAGE 1	STAGE 2
EXCAVATION =	8.2	0.0 \$0 FT
EMBANKMENT =	36.5	0.0 \$0 FT

FILE NAME =	USER NAME = Matt Overbay	DESIGNED -	REVISED -	STATE OF ILLINOIS DEPARTMENT OF TRANSPORTATION	PROPOSED CROSS SECTIONS			F.A. RTE.	SECTION	COUNTY	TOTAL SHEETS	SHEET NO.
1:\dot\0906603\draw\cadd_sheets\0998859-sht.k	IL13.dgn	DRAWN -	REVISED -		IL ROUTE 13			331	(1X-1) VB-1, B-1, N-4, R-3	WILLIAMSON	367	318
	PLOT SCALE = 10.0000' / IN.	CHECKED -	REVISED -		SCALE:			SHEET NO. OF SHEETS STA. TO STA.		CONTRACT NO. 98859		
	PLOT DATE = 12/13/2011	DATE - 12/9/11	REVISED -					ILLINOIS FED. AID PROJECT				