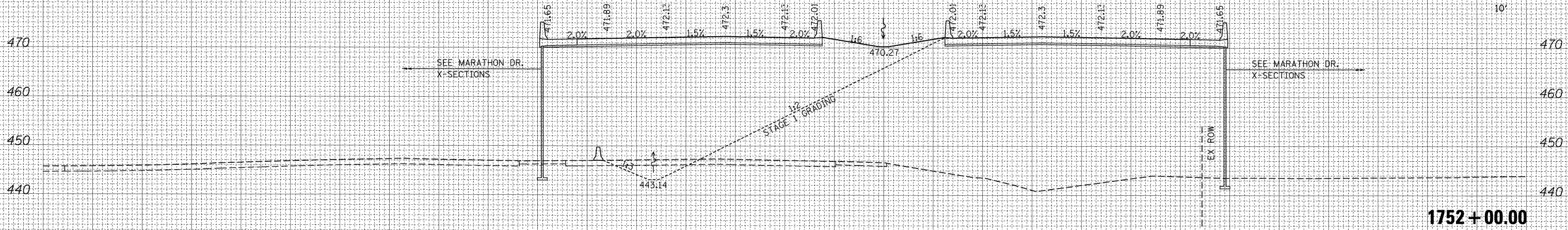
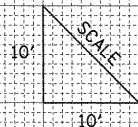
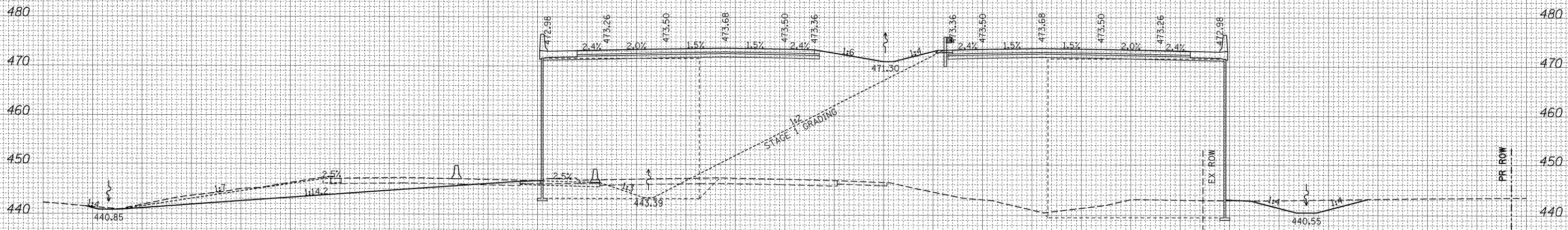


170 160 150 140 130 120 110 100 90 80 70 60 50 40 30 20 10 0 10 20 30 40 50 60 70 80 90 100 110 120 130



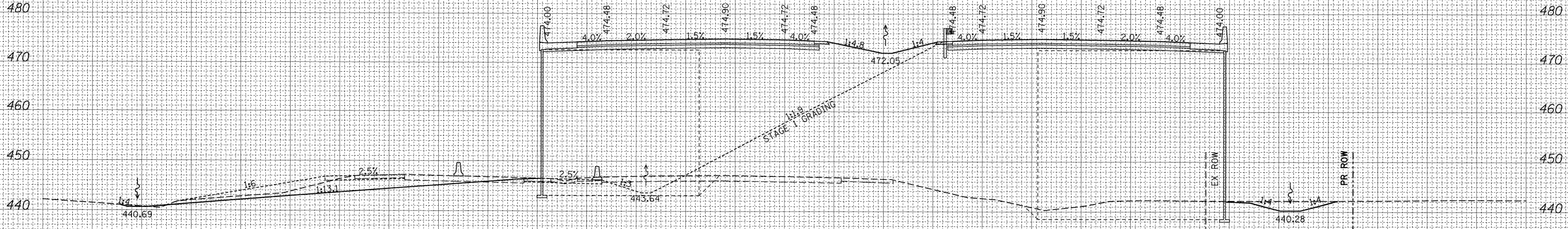
1752+00.00

	STAGE 1	STAGE 2
EXCAVATION =	69.2	66.5
EMBANKMENT =	1340.2	602.2



1751+50.00

	STAGE 1	STAGE 2
EXCAVATION =	188.1	208.4
EMBANKMENT =	1414.8	582.9



1751+00.00

	STAGE 1	STAGE 2
EXCAVATION =	176.4	228.4
EMBANKMENT =	1452.0	607.1

FINAL SURVEY	BY	DATE

ORIGINAL SURVEY	BY	DATE

FILE NAME =	USER NAME = Matt Overbey
l:\dot\0906603\draw\cadd\sheets\0998859\sh-t-x\IL13.dgn	DESIGNED -
	DRAWN -
	CHECKED -
	DATE - 12/9/11

DESIGNED -	REVISED -
DRAWN -	REVISED -
CHECKED -	REVISED -
DATE - 12/9/11	REVISED -

**STATE OF ILLINOIS
DEPARTMENT OF TRANSPORTATION**

**PROPOSED CROSS SECTIONS
IL ROUTE 13**

SCALE:	SHEET NO.	OF SHEETS	STA.	TO STA.
--------	-----------	-----------	------	---------

F.A. RTE.	SECTION	COUNTY	TOTAL SHEETS	SHEET NO.
331	(IX-1) VB-1, B-1, N-4, R-3	WILLIAMSON	367	324
CONTRACT NO. 98859				
ILLINOIS FED. AID PROJECT				