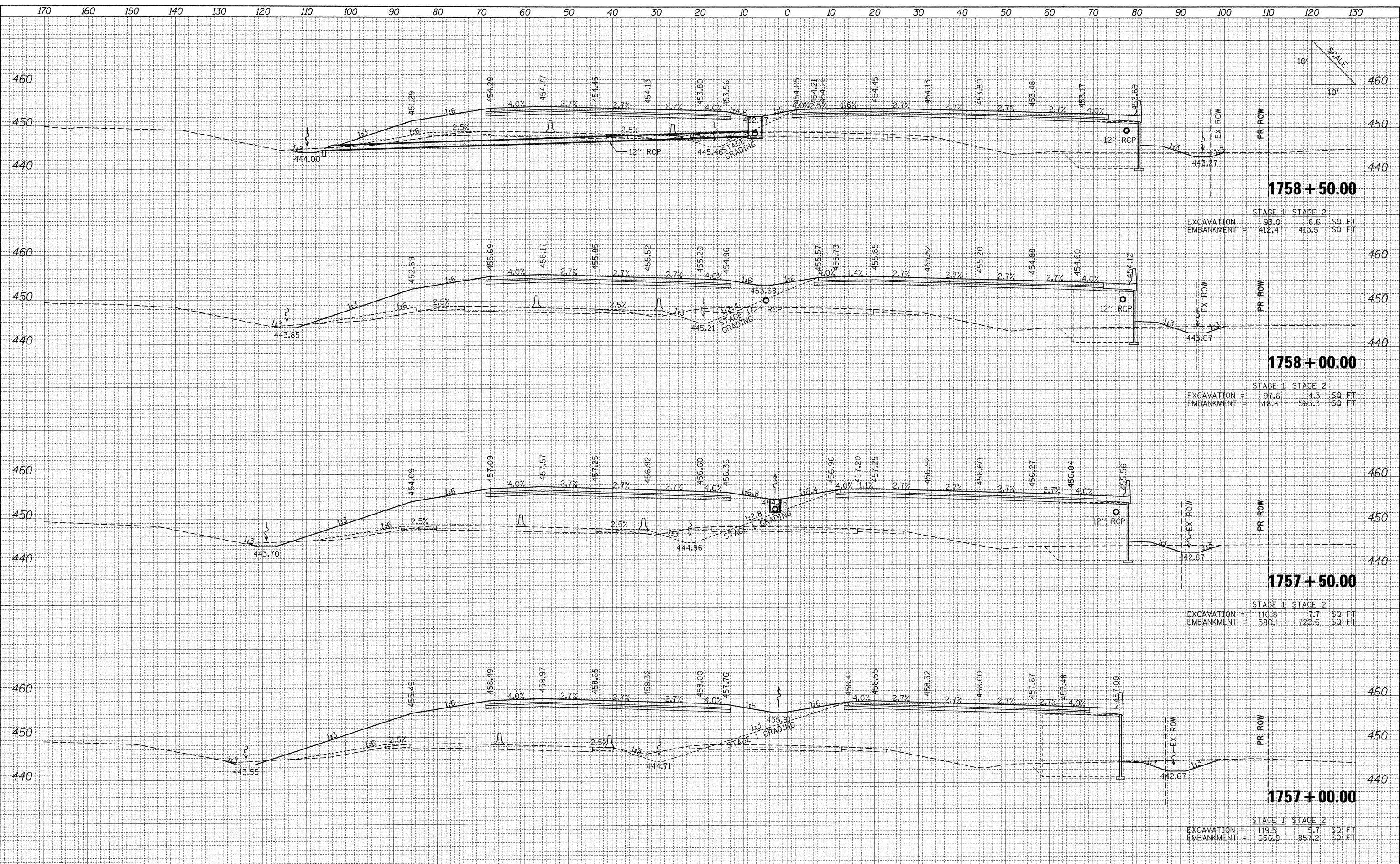


FINAL SURVEY	DATE
SURVEYED	BY
PLOTTED	
TEMPLATE	
NOTE BOOK	
AREAS	
CHECKED	
NO.	

ORIGINAL SURVEY	DATE
SURVEYED	BY
PLOTTED	
TEMPLATE	
NOTE BOOK	
AREAS	
CHECKED	
NO.	



1758 + 50.00

STAGE 1	STAGE 2
EXCAVATION = 93.0	8.6
EMBANKMENT = 412.4	413.5
	SQ. FT

1758 + 00.00

STAGE 1	STAGE 2
EXCAVATION = 97.6	4.3
EMBANKMENT = 518.6	563.3
	SQ. FT

1757 + 50.00

STAGE 1	STAGE 2
EXCAVATION = 110.8	7.7
EMBANKMENT = 580.1	722.6
	SQ. FT

1757 + 00.00

STAGE 1	STAGE 2
EXCAVATION = 119.5	5.7
EMBANKMENT = 656.9	857.2
	SQ. FT

FILE NAME =	USER NAME = Matt Overbey	DESIGNED -	REVISED -	STATE OF ILLINOIS DEPARTMENT OF TRANSPORTATION	PROPOSED CROSS SECTIONS IL ROUTE 13	F.A. RTE.	SECTION	COUNTY	TOTAL SHEETS	SHEET NO.	
I:\dot\0906603\draw\cadd\sheeta\0998859-sht-*	IL13.dgn	DRAWN -	REVISED -			331	(1X-1) VB-1, B-1, N-4, R-3	WILLIAMSON	367	328	
PLOT SCALE = 10.0000" / IN.		CHECKED -	REVISED -			CONTRACT NO. 98859					
PLOT DATE = 12/13/2011		DATE = 12/9/11	REVISED -			ILLINOIS FED. AID PROJECT					