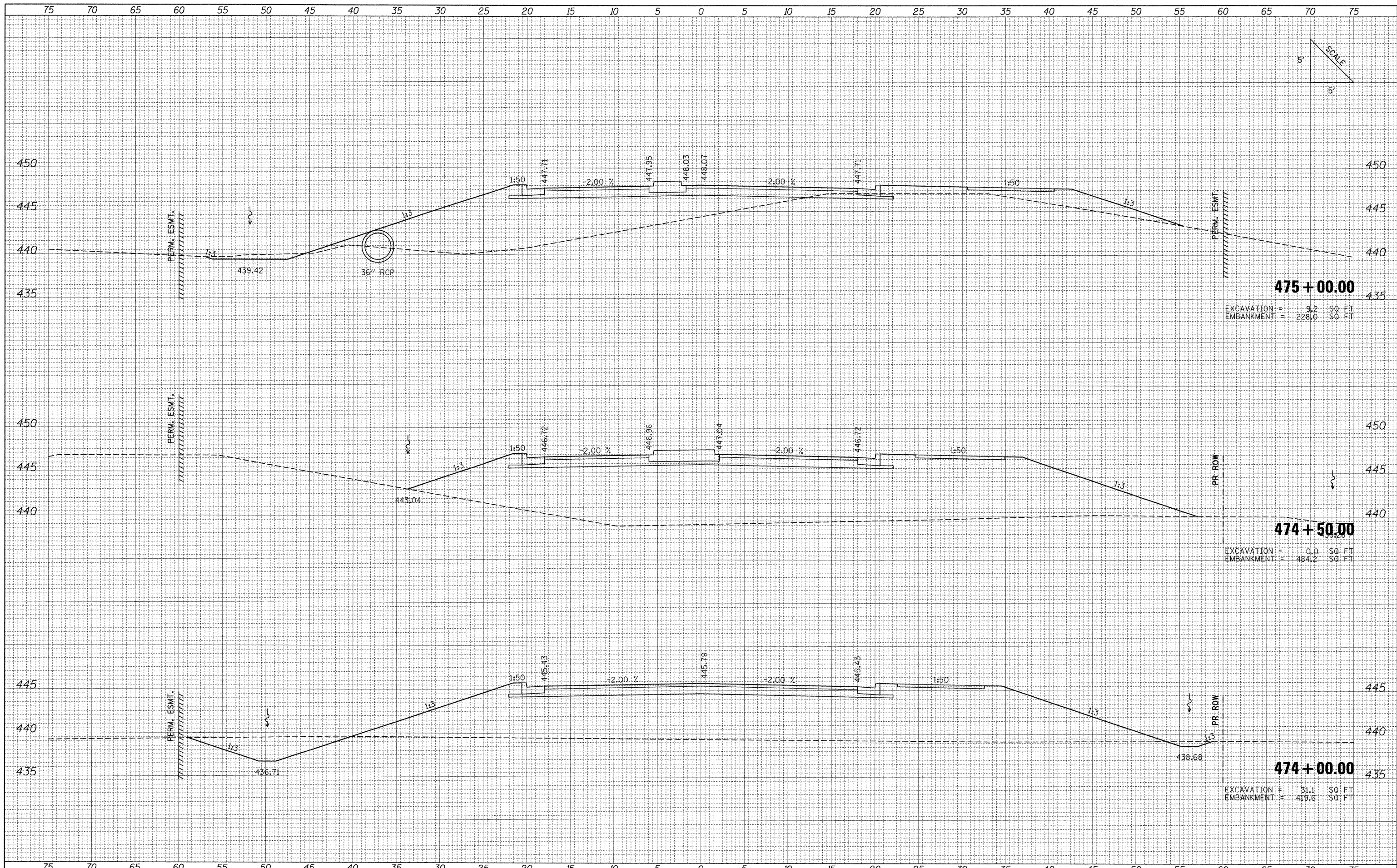


DATE	
BY	
SURVEYED	
NOTED	
TEMPLATE	
AREAS CHECKED	
NO.	

DATE	
BY	
SURVEYED	
NOTED	
TEMPLATE	
AREAS CHECKED	
NO.	



**475 + 00.00**  
 EXCAVATION = 9.2 SQ. FT.  
 EMBANKMENT = 228.0 SQ. FT.

**474 + 50.00**  
 EXCAVATION = 0.0 SQ. FT.  
 EMBANKMENT = 484.2 SQ. FT.

**474 + 00.00**  
 EXCAVATION = 31.1 SQ. FT.  
 EMBANKMENT = 419.6 SQ. FT.

FILE NAME =	USER NAME = Matt Overbey	DESIGNED - BMB	REVISED -	F.A. RTE.	SECTION	COUNTY	TOTAL SHEETS	SHEET NO.
I:\dot\0906603\draw\cadd_sheets\0998859-sht-331	Frontage.dgn	DRAWN - RAH	REVISED -	331	(1X-1) VB-1, B-1, N-4, R-1	WILLIAMSON	367	336
PLOT SCALE = 5.0000' / IN.	CHECKED - SPH	DATE - 12/9/11	REVISED -	SCALE:		SHEET NO. OF SHEETS		CONTRACT NO. 98859
PLOT DATE = 12/13/2011				STA. 474+00.00 TO STA. 475+00.00		ILLINOIS FED. AID PROJECT		

**STATE OF ILLINOIS  
 DEPARTMENT OF TRANSPORTATION**

**PROPOSED CROSS SECTIONS  
 FRONTAGE ROAD**