

STATE OF ILLINOIS  
DEPARTMENT OF TRANSPORTATION

F.A.P. R.T.E.	SECTION	COUNTY	TOTAL SHEETS	SHEET NO.
330	2015-038B	WILL	34	3
ILLINOIS CONTRACT NO. 62A95				

D-91-356-15

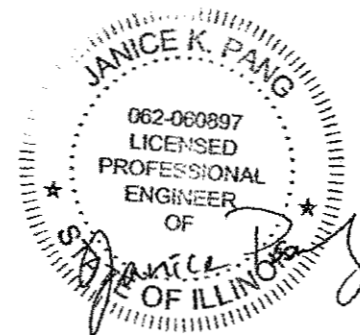


FOR INDEX OF SHEETS AND  
HIGHWAY STANDARDS, SEE SHEET NO. 2

THIS PROJECT IS LOCATED  
WITHIN UNINCORPORATED WILL  
COUNTY.

TRAFFIC DATA

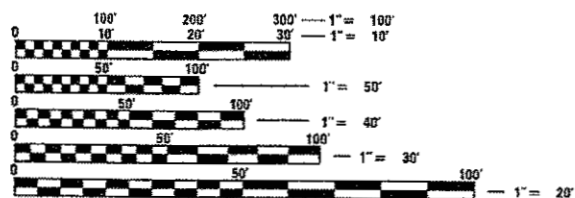
US ROUTE 45 /52:  
FUNCTIONAL CLASSIFICATION:  
OTHER PRINCIPAL ARTERIAL  
ADT (2015)=6,350  
P.V.=91% S.U.=3% M.U.=6%  
POSTED SPEED LIMIT=55 MPH  
DESIGN SPEED LIMIT=60 MPH



DATE SIGNED: 12/8/2017  
EXPIRES: 11/30/2019

# PROPOSED HIGHWAY PLANS

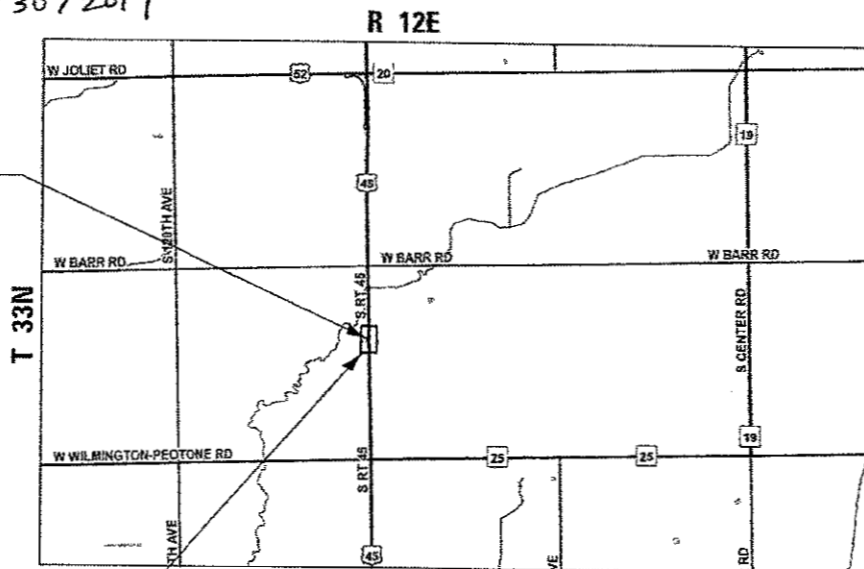
FAP ROUTE 330 (US ROUTE 45/52)  
OVER UNNAMED DITCH  
(1.4 MILES SOUTH OF US ROUTE 52)  
SECTION: 2015-038B  
PROJECT: NHPP-D31K(490)  
CULVERT REPLACEMENT  
WILL COUNTY  
C-91-356-15



FULL SIZE PLANS HAVE BEEN PREPARED USING STANDARD  
ENGINEERING SCALES. REDUCED SIZED PLANS WILL NOT  
CONFORM TO STANDARD SCALES. IN MAKING MEASUREMENTS  
ON REDUCED PLANS, THE ABOVE SCALES MAY BE USED.

J.U.L.I.E.  
JOINT UTILITY LOCATION INFORMATION FOR EXCAVATION  
1-800-892-0123  
OR 811

EXISTING SN  
099-0527  
PROPOSED SN  
099-0916



PROJECT LOCATION  
STA. 13+90 TO STA. 26+27

PEOTONE TOWNSHIP

GROSS LENGTH = 1,237 FT. = 0.234 MILE  
NET LENGTH = 1,237 FT. = 0.234 MILE  
BEGIN IMPROVEMENTS STA 13+90  
END IMPROVEMENTS STA. 26+27



LOCATION MAP  
(NOT TO SCALE)

**CHASTAIN  
& ASSOCIATES LLC**  
CONSULTING ENGINEERS  
SERVICE | SOLUTIONS | COMMITMENT™

STATE OF ILLINOIS  
DEPARTMENT OF TRANSPORTATION  
DIVISION OF HIGHWAYS

SUBMITTED ~~January 12~~ February 12 20 17

*Anthony J. Quigley* / *AS*  
REGIONAL ENGINEER

*Paul* / *AS*  
ENGINEER OF DESIGN AND ENVIRONMENT

*Paul* / *AS*  
DIRECTOR OF PROGRAM DEVELOPMENT

PROJECT MANAGER: FAWAD AQUEEL, P.E. (847) 705-4247  
PROJECT ENGINEER: RAGHAD ADEIS-DAHMAN, P.E. (847) 705-4237

CONTRACT NO. 62A95

PRINTED BY THE AUTHORITY  
OF THE STATE OF ILLINOIS



PLTDRWL

PRINTLSP

FILE NAME = D:\2015-038B-04-5000.dgn  
 PLOT DATE = 12/14/2017

CODE NO.	ITEM	UNIT	TOTAL QUANTITY	CONSTRUCTION TYPE CODE	
				NHPP FUNDS	
				80% FED 20% STATE ROADWAY 0005	80% FED 20% STATE STRUCTURAL 0004
20100110	TREE REMOVAL (6 TO 15 UNITS DIAMETER)	UNIT	34	34	
20100210	TREE REMOVAL (OVER 15 UNITS DIAMETER)	UNIT	36	36	
20200100	EARTH EXCAVATION	CU YD	1365	1365	
20201200	REMOVAL AND DISPOSAL OF UNSUITABLE MATERIAL	CU YD	430	430	
20400800	FURNISHED EXCAVATION	CU YD	152	152	
20700220	POROUS GRANULAR EMBANKMENT	CU YD	195	25	170
21101625	TOPSOIL FURNISH AND PLACE, 6"	SQ YD	3872	3872	
25000210	SEEDING, CLASS 2A	ACRE	0.7	0.7	
25000310	SEEDING, CLASS 4	ACRE	0.1	0.1	
25000400	NITROGEN FERTILIZER NUTRIENT	POUND	72	72	
25000500	PHOSPHORUS FERTILIZER NUTRIENT	POUND	72	72	
25000600	POTASSIUM FERTILIZER NUTRIENT	POUND	72	72	
25100630	EROSION CONTROL BLANKET	SQ YD	3872	3872	
28000250	TEMPORARY EROSION CONTROL SEEDING	POUND	400	400	

\* = SPECIALTY ITEMS

**CHASTAIN & ASSOCIATES LLC**  
 CONSULTING ENGINEERS  
 184-001397

USER NAME = jpong	DESIGNED - JKP	REVISED -
PLOT SCALE = 48,0000' / 1" =	DRAWN - JKP	REVISED -
PLOT DATE = 12/14/2017	CHECKED - SRK	REVISED -
	DATE - 12/13/2017	REVISED -

STATE OF ILLINOIS DEPARTMENT OF TRANSPORTATION
---

U.S. ROUTE 45/U.S. ROUTE 52 OVER UNNAMED DITCH SUMMARY OF QUANTITIES
---

SCALE:	SHEET 1 OF 5 SHEETS	STA. TO STA.
--------	---------------------	--------------

F.A.P. RTE. 330	SECTION 2015-038B	COUNTY WILL	TOTAL SHEETS 34	SHEET NO. 3
CONTRACT NO. 62A95			ILLINOIS FED. AID PROJECT	

PLT.DRW

PENTELS

FILE NAME = D:\2016\14-6002.dgn  
 PLOT DATE = 12/14/2017

CODE NO.	ITEM	UNIT	TOTAL QUANTITY	CONSTRUCTION TYPE CODE	
				NHPP FUNDS	
				80% FED 20% STATE ROADWAY 0005	80% FED 20% STATE STRUCTURAL 0004
28001100	TEMPORARY EROSION CONTROL BLANKET	SQ YD	3872	3872	
28000305	TEMPORARY DITCH CHECKS	FOOT	40	40	
28000400	PERIMETER EROSION BARRIER	FOOT	2273	2273	
28100127	STONE RIPRAP, CLASS B4	SQ YD	36		36
28200200	FILTER FABRIC	SQ YD	36		36
30300001	AGGREGATE SUBGRADE IMPROVEMENT	CU YD	50	50	
30300112	AGGREGATE SUBGRADE IMPROVEMENT 12"	SQ YD	2848	2848	
31101200	SUBBASE GRANULAR MATERIAL, TYPE B 4"	SQ YD	1409	1409	
40600290	BITUMINOUS MATERIALS (TACK COAT)	POUND	1343	1343	
40600635	LEVELING BINDER (MACHINE METHOD), N70	TON	126	126	
40600982	HOT-MIX ASPHALT SURFACE REMOVAL - BUTT JOINT	SQ YD	24	24	
40603340	HOT-MIX ASPHALT SURFACE COURSE, MIX "D", N70	TON	251	251	
44000100	PAVEMENT REMOVAL	SQ YD	1418	1418	
44000158	HOT-MIX ASPHALT SURFACE REMOVAL, 2 1/4"	SQ YD	2984	2984	

\* = SPECIALTY ITEMS



USER NAME = jphang  
 PLOT SCALE = 10.0000' / in.  
 PLOT DATE = 12/14/2017

DESIGNED - JKP	REVISED -
DRAWN - JKP	REVISED -
CHECKED - SRK	REVISED -
DATE - 12/13/2017	REVISED -

STATE OF ILLINOIS  
 DEPARTMENT OF TRANSPORTATION

U.S. ROUTE 45/U.S. ROUTE 52 OVER UNNAMED DITCH  
 SUMMARY OF QUANTITIES

SCALE: SHEET 2 OF 5 SHEETS STA. TO STA.

F.A.P. RTE. 330	SECTION 2015-038B	COUNTY WILL	TOTAL SHEETS 34	SHEET NO. 4
CONTRACT NO. 62A95				ILLINOIS FED. AID PROJECT

#PLOTDRILL\*

#PENTEL\*

FILE NAME = D:\B2A95-114-5003.dgn  
#SYSTEMPRINTER.NAME

CODE NO.	ITEM	UNIT	TOTAL QUANTITY	CONSTRUCTION TYPE CODE	
				NHPP FUNDS	
				80% FED 20% STATE ROADWAY 0005	80% FED 20% STATE STRUCTURAL 0004
44004250	PAVED SHOULDER REMOVAL	SQ YD	2487	2487	
44201809	CLASS D PATCHES, TYPE IV, 13 INCH	SQ YD	112	112	
48203029	HOT-MIX ASPHALT SHOULDERS, 8"	SQ YD	2534	2534	
50100100	REMOVAL OF EXISTING STRUCTURES	EACH	1		1
50200450	REMOVAL AND DISPOSAL OF UNSUITABLE MATERIAL FOR STRUCTURES	CU YD	160		160
50800105	REINFORCEMENT BARS	POUND	13870		13870
50800515	BAR SPLICERS	EACH	46		46
52200020	TEMPORARY SOIL RETENTION SYSTEM	SQ FT	570		570
54003000	CONCRETE BOX CULVERTS	CU YD	73		73
60100060	CONCRETE HEADWALLS FOR PIPE UNDERDRAINS	EACH	4	4	
60108100	PIPE UNDERDRAINS, 4" (SPECIAL)	FOOT	87	87	
60108204	PIPE UNDERDRAINS, TYPE 2, 4"	FOOT	2238	2238	
* 66900200	NON-SPECIAL WASTE DISPOSAL	CU YD	570	570	
* 66900450	SPECIAL WASTE PLANS AND REPORTS	LSUM	1	1	

\* = SPECIALTY ITEMS



USER NAME = jpong  
PLOT SCALE = 40.0000' / in.  
PLOT DATE = 12/14/2017

DESIGNED - JKP  
DRAWN - JKP  
CHECKED - SRK  
DATE - 12/13/2017

REVISED -  
REVISED -  
REVISED -  
REVISED -

STATE OF ILLINOIS  
DEPARTMENT OF TRANSPORTATION

U.S. ROUTE 45/U.S. ROUTE 52 OVER UNNAMED DITCH  
SUMMARY OF QUANTITIES

SCALE: SHEET 3 OF 5 SHEETS STA. TO STA.

F.A.P. RTE. 330	SECTION 2015-038B	COUNTY WILL	TOTAL SHEETS 34	SHEET NO. 5
CONTRACT NO. 62A95			ILLINOIS FED. AID PROJECT	

#PLOTDRW1\*

#PENTBL5\*

FILE NAME = 0182495-111-5004.dwg  
#SYSPRINTER.NAME\*

CODE NO.	ITEM	UNIT	TOTAL QUANTITY	CONSTRUCTION TYPE CODE	
				NHPP FUNDS	
				80% FED 20% STATE ROADWAY 0005	80% FED 20% STATE STRUCTURAL 0004
* 66900530	SOIL DISPOSAL ANALYSIS	EACH	1	1	
67000400	ENGINEER'S FIELD OFFICE, TYPE A	CAL MO	6	6	
67100100	MOBILIZATION	L SUM	1	1	
70300100	SHORT TERM PAVEMENT MARKING	FOOT	446	446	
70300150	SHORT TERM PAVEMENT MARKING REMOVAL	SQ FT	148	148	
70300220	TEMPORARY PAVEMENT MARKING - LINE 4"	FOOT	5568	5568	
70300260	TEMPORARY PAVEMENT MARKING - LINE 12"	FOOT	398	398	
70300904	PAVEMENT MARKING TAPE, TYPE IV 4"	FOOT	9130	9130	
70400100	TEMPORARY CONCRETE BARRIER	FOOT	1209	1209	
70400200	RELOCATE TEMPORARY CONCRETE BARRIER	FOOT	1209	1209	
70600260	IMPACT ATTENUATORS, TEMPORARY (FULLY REDIRECTIVE, NARROW), TEST LEVEL 3	EACH	4	4	
70600332	IMPACT ATTENUATORS, RELOCATE (FULLY REDIRECTIVE, NARROW), TEST LEVEL 3	EACH	4	4	
* 78000200	THERMOPLASTIC PAVEMENT MARKING - LINE 4"	FOOT	2784	2784	
* 78000600	THERMOPLASTIC PAVEMENT MARKING - LINE 12"	FOOT	199	199	

\* = SPECIALTY ITEMS



USER NAME = jpong	DESIGNED - JKP	REVISED -
	DRAWN - JKP	REVISED -
PLOT SCALE = 48.0000' / 1"	CHECKED - SRK	REVISED -
PLOT DATE = 12/14/2017	DATE - 12/13/2017	REVISED -

STATE OF ILLINOIS  
DEPARTMENT OF TRANSPORTATION

U.S. ROUTE 45/U.S. ROUTE 52 OVER UNNAMED DITCH  
SUMMARY OF QUANTITIES

SCALE: SHEET 4 OF 5 SHEETS STA. TO STA.

F.A.P. RTE. 330	SECTION 2015-038B	COUNTY WILL	TOTAL SHEETS 34	SHEET NO. 6
CONTRACT NO. 62495				
ILLINOIS FED. AID PROJECT				

#PLTDRVL\*

#PENTBL\*

FILE NAME = D:\2017\11-5005.dgn  
#SYSPRINTER.NAME\*

CODE NO.	ITEM	UNIT	TOTAL QUANTITY	CONSTRUCTION TYPE CODE	
				NHPP FUNDS	
				80% FED 20% STATE ROADWAY 0005	80% FED 20% STATE STRUCTURAL 0004
* 78100100	RAISED REFLECTIVE PAVEMENT MARKER	EACH	16	16	
* 78200011	BARRIER WALL REFLECTORS, TYPE C	EACH	98	98	
78300200	RAISED REFLECTIVE PAVEMENT MARKER REMOVAL	EACH	16	16	
Z0013798	CONSTRUCTION LAYOUT	L SUM	1	1	
Z0030850	TEMPORARY INFORMATION SIGNING	SQ FT	51.4	51.4	
Z0054400	ROCK FILL	CU YD	160		160
Z0062456	TEMPORARY PAVEMENT	SQ YD	1306	1306	
<del>Z0076600</del>	<del>TRAINEES</del>	<del>HOURL</del>			
X0327980	PAVEMENT MARKING REMOVAL - WATER BLASTING	SQ FT	919	919	
X7010216	TRAFFIC CONTROL AND PROTECTION, (SPECIAL)	L SUM	1	1	
X7015005	CHANGEABLE MESSAGE SIGN	CAL DA	28	28	
X7030005	TEMPORARY PAVEMENT MARKING REMOVAL	SQ FT	5249	5249	

\* = SPECIALTY ITEMS



USER NAME = jpong  
DESIGNED - JKP  
DRAWN - JKP  
CHECKED - SRK  
DATE - 12/13/2017  
PLOT SCALE = 48.0000' / 1" = 1'  
PLOT DATE = 12/14/2017

REVISED -  
REVISED -  
REVISED -  
REVISED -

STATE OF ILLINOIS  
DEPARTMENT OF TRANSPORTATION

U.S. ROUTE 45/U.S. ROUTE 52 OVER UNNAMED DITCH  
SUMMARY OF QUANTITIES

SCALE: SHEET 5 OF 5 SHEETS STA. TO STA.

F.A.P. RTE.	SECTION	COUNTY	TOTAL SHEETS	SHEET NO.
330	2015-038B	WILL	34	7
CONTRACT NO. 62A95			ILLINOIS FED. AID PROJECT	

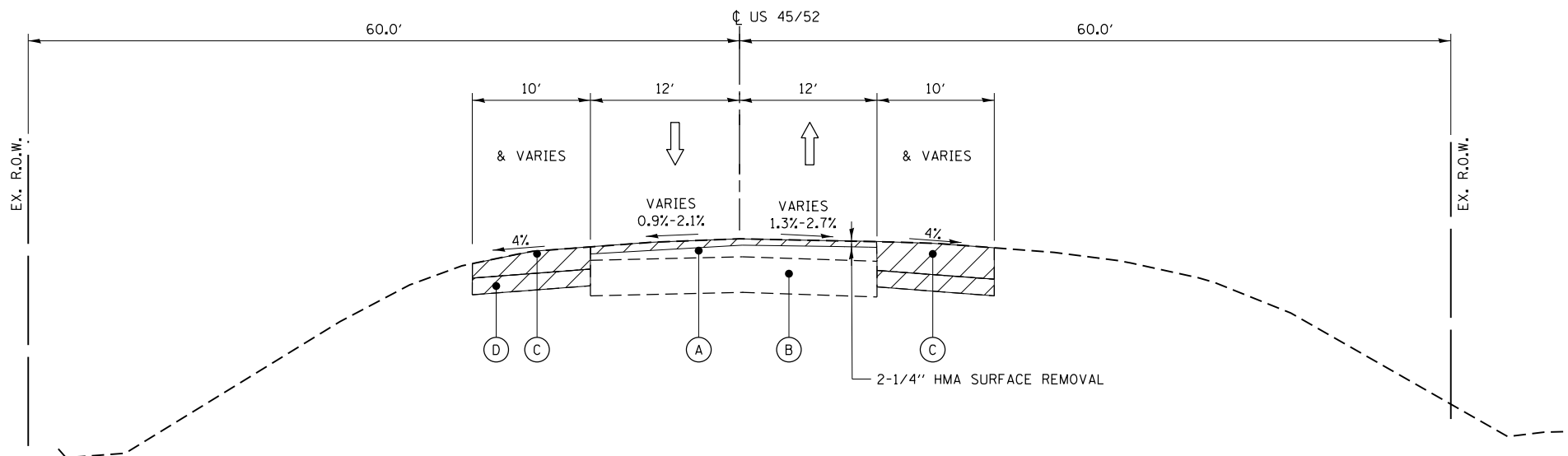
RSV

**EXISTING LEGEND**

- (A) BITUMINOUS CONCRETE PAVEMENT, 4 1/4"
- (B) BITUMINOUS AGGREGATE MIXTURE BASE COURSE, 8"
- (C) BITUMINOUS AGGREGATE MIXTURE SHOULDER, 6"
- (D) SUB-BASE GRANULAR MATERIAL, 4"
- (E) EXISTING PAVEMENT MARKING
- [Hatched Box] REMOVAL ITEMS

**PROPOSED LEGEND**

- (1) HOT-MIX ASPHALT SURFACE COURSE, MIX "D", N70, 1-1/2"
- (2) LEVELING BINDER (MACHINE METHOD), N70, 3/4"
- (3) CLASS D PATCH, TYPE IV, 13"
- (4) HOT-MIX ASPHALT SHOULDER, 8"  
- HMA SURFACE COURSE, MIX "D", N70, 2"  
- HMA BASE COURSE 6"
- (5) TOPSOIL, 6"
- (6) AGGREGATE SUBGRADE IMPROVEMENT, 12"
- (7) PIPE UNDERDRAIN, TYPE II, 4"
- (8) SUBBASE GRANULAR MATERIAL, TYPE B, 4"



**EXISTING TYPICAL SECTION**

**U.S. RTE. 45/U.S. RTE. 52**

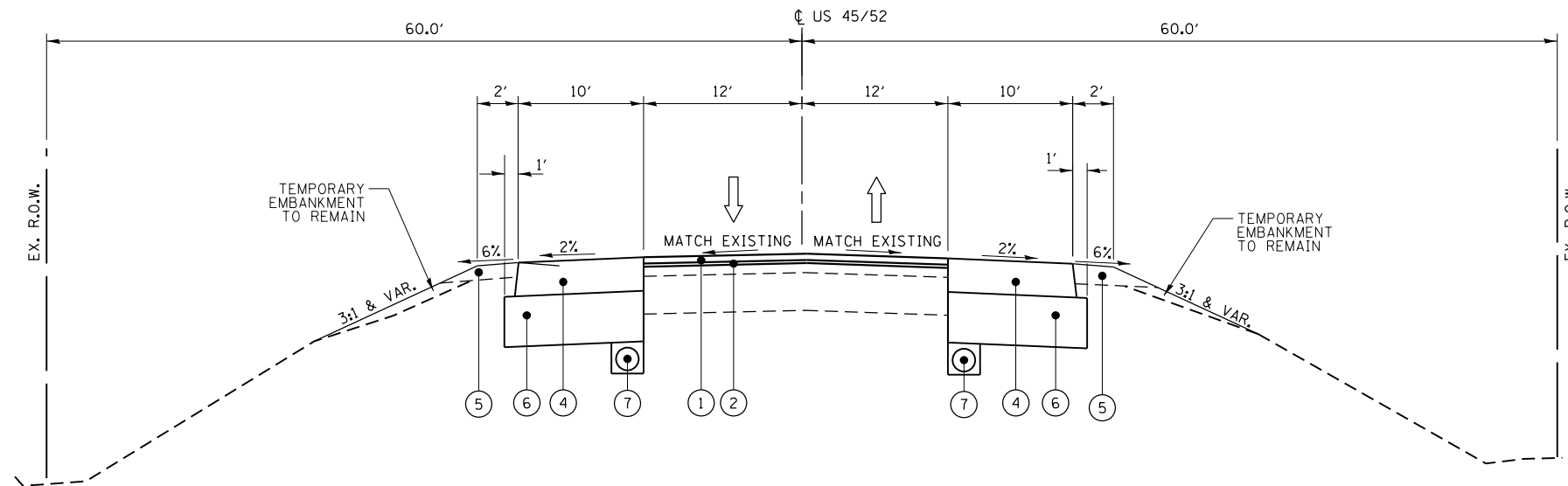
STA. 14+29 TO STA. 19+79  
STA. 20+11 TO STA. 25+48

**MIXTURES TABLE**

HOT-MIX ASPHALT MIXTURE REQUIREMENTS		AIR VOIDS @NDES	QUALITY MANAGEMENT PROGRAM (QMP)
MIXTURE TYPE			
<b>PAVEMENT RECONSTRUCTION</b>			
CLASS D PATCH (HMA BINDER IL-19mm)		4% @ 70 GYR.	QC/OA
<b>PAVEMENT RESURFACING</b>			
HMA SURFACE COURSE, MIX "D", N70, (IL-9.5mm), 1 1/2"		4% @ 70 GYR.	QC/OA
LEVELING BINDER (MACHINE METHOD), N70, (IL-9.5mm), 3/4"		4% @ 70 GYR.	QC/OA
<b>TEMPORARY PAVEMENT AND HMA SHOULDER 8"</b>			
HMA SURFACE COURSE, MIX "D", N70, (IL-9.5mm), 2"		4% @ 70 GYR.	QC/OA
HMA SHOULDER (HMA BINDER IL-19mm), 6"		4% @ 70 GYR.	QC/OA
QMP DESIGNATIONS: QUALITY CONTROL/QUALITY ASSURANCE (QC/OA); QUALITY CONTROL FOR PERFORMANCE (QCP); PAY FOR PERFORMANCE (PFP)			

NOTES:

- THE UNIT WEIGHT USED TO CALCULATE ALL HMA SURFACE MIXTURE QUANTITIES IS 112 LBS/50 YD/IN.
- THE "AC TYPE" FOR POLYMERIZED HMA MIXES SHALL BE "SBS/SBR PG 76-22" AND FOR NON -POLYMERIZED HMA THE "AC TYPE" SHALL BE "PG 64-22" UNLESS MODIFIED BY DISTRICT ONE SPECIAL PROVISIONS.
- FOR USE OF RECYCLED MATERIALS SEE SPECIAL PROVISIONS.
- QUALITY MANAGEMENT PROGRAM (QMP) IDENTIFIES THE PARTICULAR QUALITY CONTROL SPECIFICATION THAT APPLIES TO THE HMA MIXTURE.



**PROPOSED TYPICAL SECTION**

**U.S. RTE. 45/U.S. RTE. 52**

STA. 14+29 TO STA. 19+79  
STA. 20+11 TO STA. 25+48

NOTE:  
PROPOSED SHOULDER TO BE CONSTRUCTED AS PART OF TEMPORARY PAVEMENT OPERATION AND REMAIN AFTER THE TEMPORARY PAVEMENT HAS BEEN REMOVED.

FILE NAME = D:\2016\11-17\11-17.dgn PLOT DATE = 12/13/2017



USER NAME = jpong	DESIGNED - JKP	REVISED -
	DRAWN - JKP	REVISED -
PLOT SCALE = 13.3342" / 1"	CHECKED - SRK	REVISED -
PLOT DATE = 12/13/2017	DATE - 12/13/2017	REVISED -

STATE OF ILLINOIS  
DEPARTMENT OF TRANSPORTATION

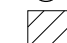
U.S. ROUTE 45/U.S. ROUTE 52 OVER UNNAMED DITCH  
TYPICAL SECTIONS

SCALE: SHEET 1 OF 2 SHEETS STA. TO STA.

F.A.P. RTE. 330	SECTION 2015-038B	COUNTY WILL	TOTAL SHEETS 34	SHEET NO. 8
CONTRACT NO. 62A95				ILLINOIS FED. AID PROJECT

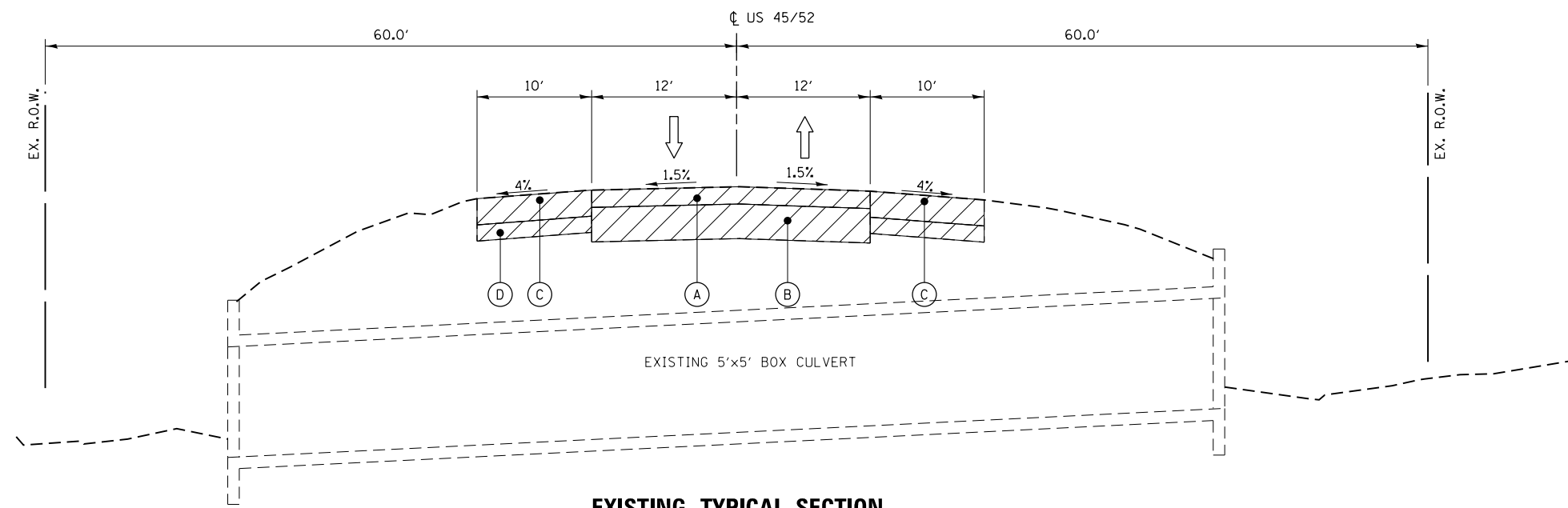


**EXISTING LEGEND**

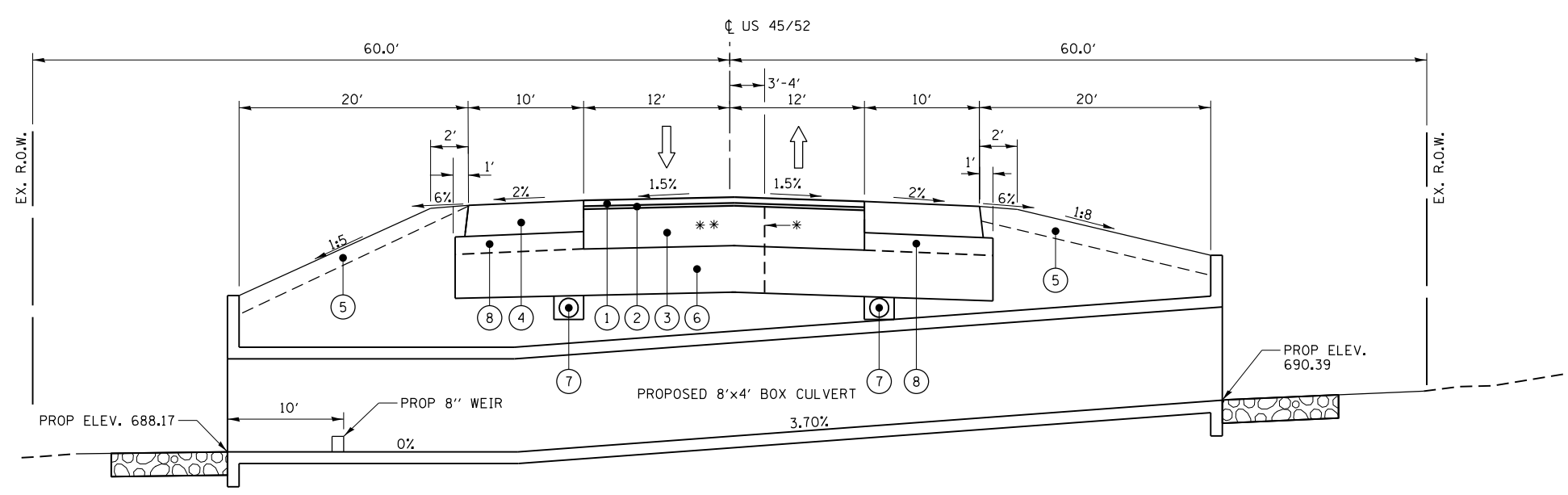
- (A) BITUMINOUS CONCRETE PAVEMENT, 4 1/4"
- (B) BITUMINOUS AGGREGATE MIXTURE BASE COURSE, 8"
- (C) BITUMINOUS AGGREGATE MIXTURE SHOULDER, 6"
- (D) SUB-BASE GRANULAR MATERIAL, 4"
- (E) EXISTING PAVEMENT MARKING
-  REMOVAL ITEMS

**PROPOSED LEGEND**

- (1) HOT-MIX ASPHALT SURFACE COURSE, MIX "D", N70, 1-1/2"
- (2) LEVELING BINDER (MACHINE METHOD), N70, 3/4"
- (3) CLASS D, PATCH TYPE IV, 13"
- (4) HOT-MIX ASPHALT SHOULDER, 8"  
- HMA SURFACE COURSE, MIX "D", N70, 2"  
- HMA BASE COURSE 6"
- (5) TOPSOIL, 6"
- (6) AGGREGATE SUBGRADE IMPROVEMENT, 12"
- (7) PIPE UNDERDRAIN, TYPE II, 4"
- (8) SUBBASE GRANULAR MATERIAL, TYPE B, 4"



**EXISTING TYPICAL SECTION**  
**U.S. RTE. 45/U.S. RTE. 52**  
 STA. 19+79 TO STA. 20+11  
 (LOOKING NORTH)



**PROPOSED TYPICAL SECTION**  
**U.S. RTE. 45/U.S. RTE. 52**  
 STA. 19+79 TO STA. 20+11  
 (LOOKING NORTH)

NOTE:  
 \* APPROXIMATE LIMIT OF PAVEMENT IMPROVEMENT  
 BASED ON MAINTENANCE OF TRAFFIC.  
 \*\* CLASS D, PATCH TYPE IV, 13" OVER CULVERT  
 INCLUDES THE REQUIRED THICKNESS OF THE  
 PROPOSED LEVELING BINDER AND HOT-MIX  
 ASPHALT SURFACE COURSE. SEE MAINTENANCE  
 OF TRAFFIC SHEETS FOR DETAILS.

FILE NAME = D:\2015\11-17\11-17.dgn  
 PLOT DATE = 12/13/2017



USER NAME = jpong	DESIGNED - JKP	REVISED -
PLOT SCALE = 13.3342" / 1"	DRAWN - JKP	REVISED -
PLOT DATE = 12/13/2017	CHECKED - SRK	REVISED -
	DATE - 12/13/2017	REVISED -

**STATE OF ILLINOIS**  
**DEPARTMENT OF TRANSPORTATION**

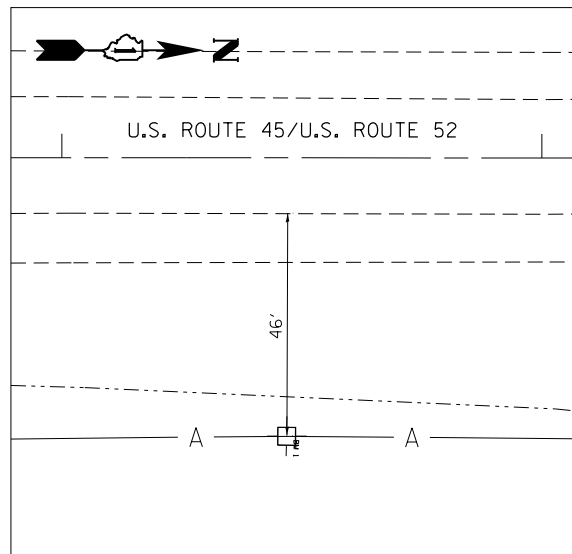
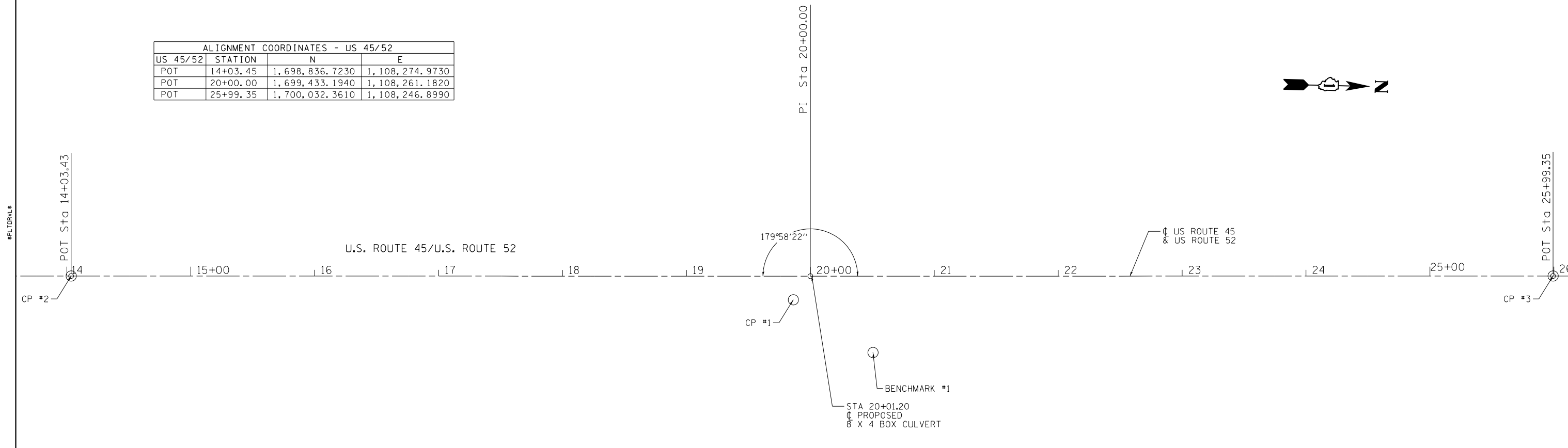
**U.S. ROUTE 45/U.S. ROUTE 52 OVER UNNAMED DITCH**  
**TYPICAL SECTIONS**

F.A.P. RTE.	SECTION	COUNTY	TOTAL SHEETS	SHEET NO.
330	2015-038B	WILL	34	9
CONTRACT NO. 62A95				

SCALE: SHEET 2 OF 2 SHEETS STA. TO STA.

ILLINOIS FED. AID PROJECT

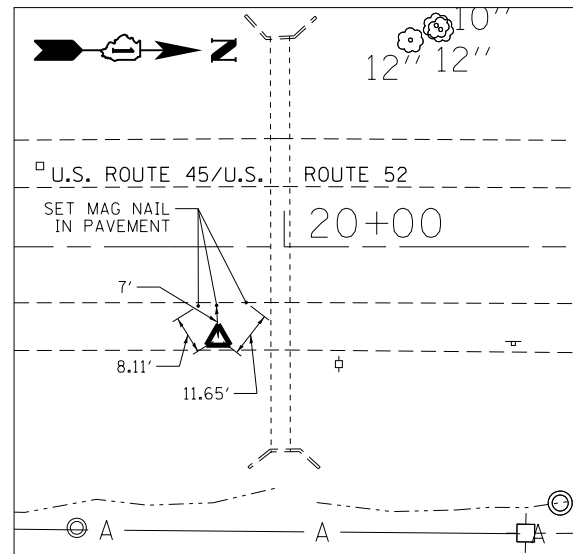
ALIGNMENT COORDINATES - US 45/52			
US 45/52	STATION	N	E
POT	14+03.45	1,698,836.7230	1,108,274.9730
POT	20+00.00	1,699,433.1940	1,108,261.1820
POT	25+99.35	1,700,032.3610	1,108,246.8990



**BENCHMARK #1**

RAILROAD SPIKE ON WEST SID OF POWER POLE  
EAST OF EAST DITCH LINE

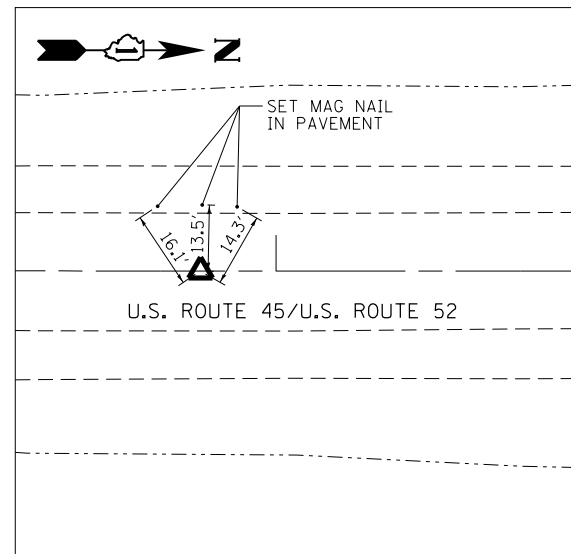
18+47.38, 57.91 RT  
N 1699282.0707  
E 1108322.4799  
EL. 695.594



**CONTROL POINT #1**

SET PK NAIL IN EAST SHOULDER  
7' EAST OF EDGE OF PAVEMENT

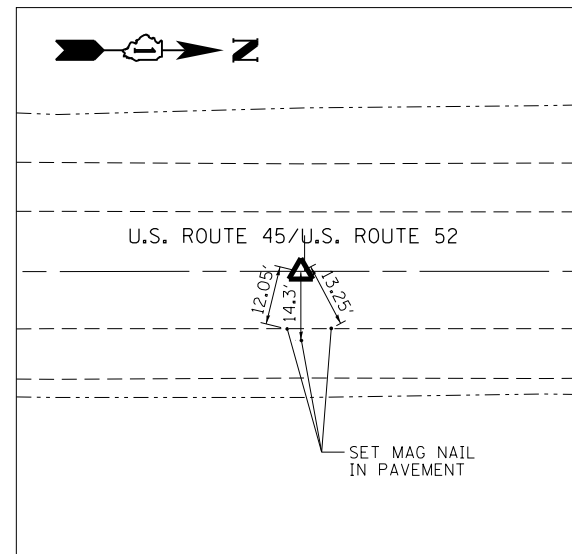
19+86.29, 19.07 RT  
N 1699420.0393  
E 1108280.4070  
EL. 698.676



**CONTROL POINT #2**

SET PK NAIL IN CENTERLINE OF ROAD

14+03.45  
N 1698836.7230  
E 1108274.9730  
EL. 704.483



**CONTROL POINT #3**

SET PK NAIL IN CENTERLINE OF ROAD

25+99.35  
N 1700032.3610  
E 1108246.8990  
EL. 695.981

FILE NAME = D:\2016\11-17-ATB.dgn  
PLOT DATE = 12/13/2017



USER NAME = jpong	DESIGNED - JKP	REVISED -
	DRAWN - JKP	REVISED -
PLOT SCALE = 80.0000' / in.	CHECKED - SRK	REVISED -
PLOT DATE = 12/13/2017	DATE - 12/13/2017	REVISED -

STATE OF ILLINOIS  
DEPARTMENT OF TRANSPORTATION

U.S. ROUTE 45/U.S. ROUTE 52 OVER UNNAMED DITCH  
ALIGNMENT, TIES, AND BENCHMARKS

SCALE: SHEET 1 OF 1 SHEETS STA. TO STA.

F.A.P. RTE.	SECTION	COUNTY	TOTAL SHEETS	SHEET NO.
330	2015-038B	WILL	34	10
CONTRACT NO. 62A95				
ILLINOIS FED. AID PROJECT				

◆ BORING LOCATIONS

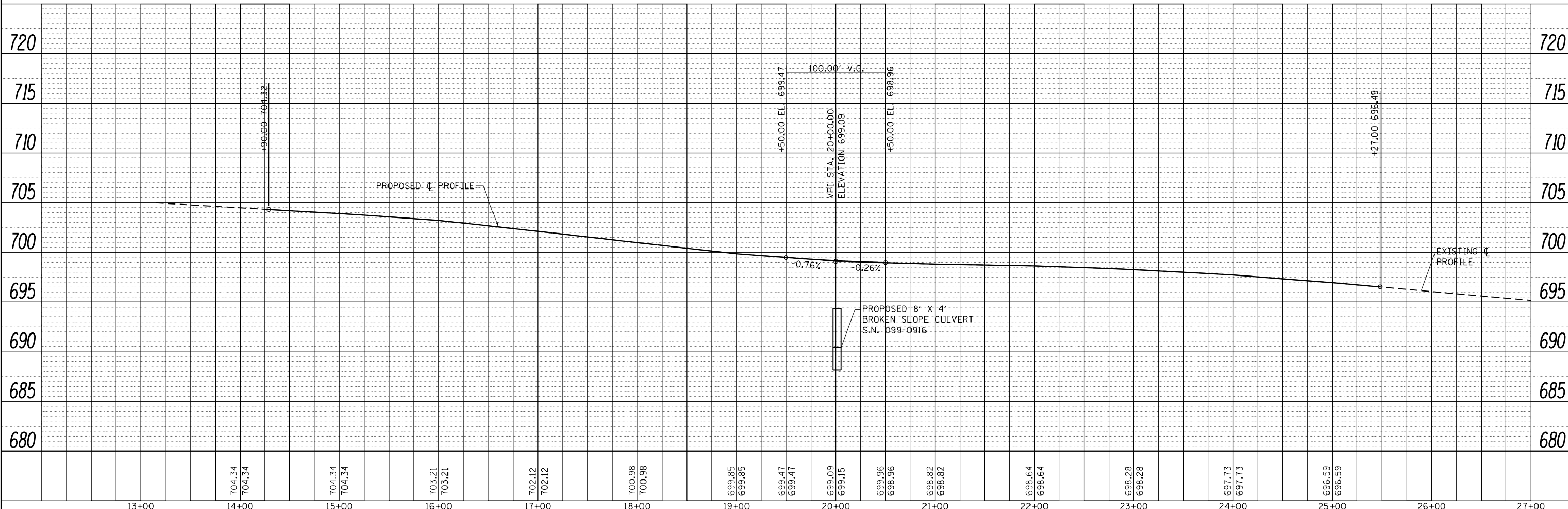
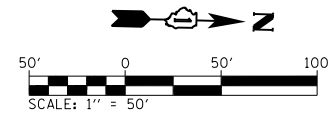
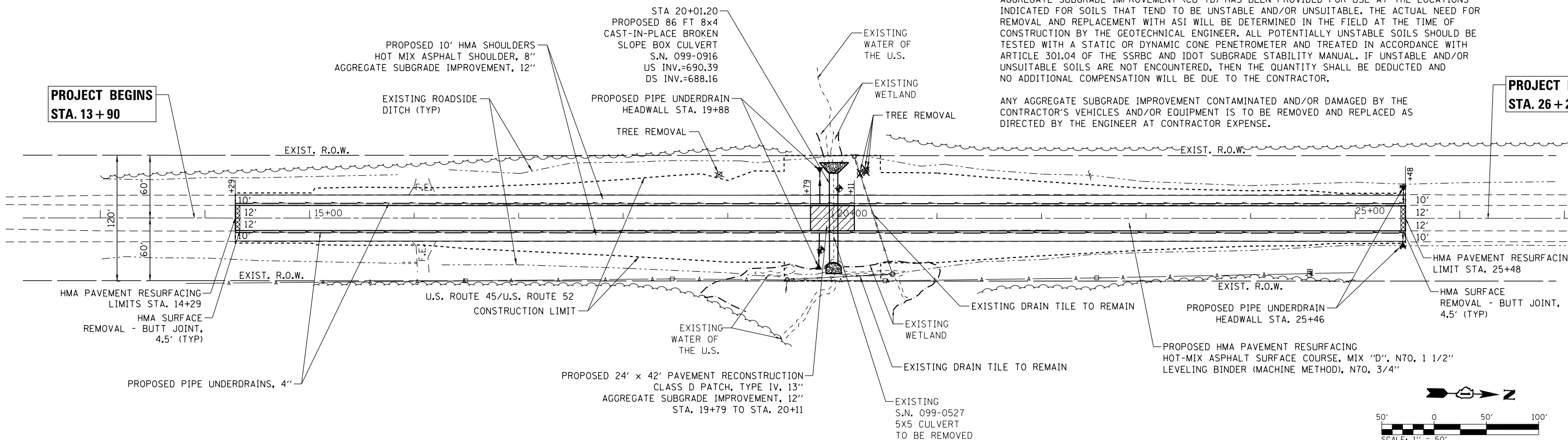
NOTE:  
CONTRACTOR IS RESPONSIBLE FOR VERIFICATION OF FIELD AND DRAIN TILE LOCATIONS WITHIN THE PROJECT LIMITS.

AGGREGATE SUBGRADE IMPROVEMENT (CU YD) HAS BEEN PROVIDED FOR USE AT THE LOCATIONS INDICATED FOR SOILS THAT TEND TO BE UNSTABLE AND/OR UNSUITABLE. THE ACTUAL NEED FOR REMOVAL AND REPLACEMENT WITH ASI WILL BE DETERMINED IN THE FIELD AT THE TIME OF CONSTRUCTION BY THE GEOTECHNICAL ENGINEER. ALL POTENTIALLY UNSTABLE SOILS SHOULD BE TESTED WITH A STATIC OR DYNAMIC CONE PENETROMETER AND TREATED IN ACCORDANCE WITH ARTICLE 301.04 OF THE SSRBC AND IDOT SUBGRADE STABILITY MANUAL. IF UNSTABLE AND/OR UNSUITABLE SOILS ARE NOT ENCOUNTERED, THEN THE QUANTITY SHALL BE DEDUCTED AND NO ADDITIONAL COMPENSATION WILL BE DUE TO THE CONTRACTOR.

ANY AGGREGATE SUBGRADE IMPROVEMENT CONTAMINATED AND/OR DAMAGED BY THE CONTRACTOR'S VEHICLES AND/OR EQUIPMENT IS TO BE REMOVED AND REPLACED AS DIRECTED BY THE ENGINEER AT CONTRACTOR EXPENSE.

**PROJECT BEGINS  
STA. 13+90**

**PROJECT ENDS  
STA. 26+27**



PLAN	SURVEYED	DATE
	PLOTTED	
	GRADES CHECKED	
	STRUCTURE NOTATIONS CHECKED	
	NOTE BOOK NO.	
	FILE NAME	

PROFILE	SURVEYED	DATE
	PLOTTED	
	GRADES CHECKED	
	STRUCTURE NOTATIONS CHECKED	
	NOTE BOOK NO.	
	FILE NAME	

FILE NAME = D:\2015\15-038B-sht-pln\prf.dgn  
PLOT DATE = 12/13/2017

**CHASTAIN & ASSOCIATES LLC**  
CONSULTING ENGINEERS  
184-001397

USER NAME = jpong  
PLOT SCALE = 100.0000' / in.  
PLOT DATE = 12/13/2017

DESIGNED - JKP  
DRAWN - JKP  
CHECKED - SRK  
DATE - 12/13/2017

REVISED -  
REVISED -  
REVISED -  
REVISED -

**STATE OF ILLINOIS  
DEPARTMENT OF TRANSPORTATION**

**U.S. ROUTE 45/U.S. ROUTE 52 OVER UNNAMED DITCH  
ROADWAY PLAN AND PROFILE**

SCALE: 1"=50' SHEET 1 OF 1 SHEETS STA. TO STA.

F.A.P. RTE.	SECTION	COUNTY	TOTAL SHEETS	SHEET NO.
330	2015-038B	WILL	34	11
CONTRACT NO. 62A95				
ILLINOIS FED. AID PROJECT				

**MAINTENANCE OF TRAFFIC GENERAL NOTES:**

1. THE TRAFFIC CONTROL DEPICTED HEREIN IS THE MINIMUM REQUIREMENT. ADDITIONAL TRAFFIC CONTROL DEVICES AS SPECIFIED IN THE HIGHWAY STANDARDS AS SHOWN IN THE INDEX OF SHEETS AND THE SPECIAL PROVISIONS SHALL BE PLACED BY THE CONTRACTOR TO THE SATISFACTION OF THE ENGINEER. ALL TRAFFIC CONTROL DEVICES SHALL BE CONSIDERED INCLUDED IN THE COST OF TRAFFIC CONTROL AND PROTECTION, (SPECIAL) UNLESS OTHERWISE INDICATED WITHIN THESE GENERAL NOTES, PLANS OR SPECIAL PROVISIONS.
2. THE CONTRACTOR SHALL FURNISH, INSTALL, MAINTAIN AND REMOVE ALL SIGNS AND SIGN SUPPORTS REQUIRED FOR MAINTENANCE OF TRAFFIC.
3. THE CONTRACTOR SHALL BE RESPONSIBLE FOR PROVIDING LABOR, SIGNS AND TRAFFIC CONTROL DEVICES NECESSARY FOR THE MAINTENANCE OF TRAFFIC UNLESS NOTED OTHERWISE IN THE SPECIAL PROVISIONS.
4. THE CONTRACTOR SHALL CONTACT THE DISTRICT ONE TRAFFIC CONTROL SUPERVISOR AT (847) 705-4470 A MINIMUM OF 72 HOURS IN ADVANCE OF BEGINNING THE WORK.
5. IN ADVANCE OF ALL STAGE CHANGES ON US 45, THE CONTRACTOR SHALL PLACE ONE (1) PORTABLE CHANGEABLE MESSAGE SIGN AT EACH END OF THE PROJECT ALONG US 45 AS DIRECTED AT A LOCATION DESIGNATED BY THE ENGINEER TO INFORM MOTORISTS OF THE UPCOMING STAGE CHANGE ON US 45. THE MESSAGE SHALL BE APPROVED BY THE ENGINEER.
6. WORK ZONE SPEED LIMIT SHALL BE 45 MPH ON US 45.
7. DRUMS OR TYPE II BARRICADES EQUIPPED WITH BI-DIRECTIONAL STEADY BURN LIGHT SHALL BE PROVIDED AS SHOWN IN THE PLANS AND AS DIRECTED BY THE ENGINEER.
8. ALL "ROAD CONSTRUCTION AHEAD" AND " SPEED LIMIT AHEAD" SIGNS, AND TYPE III BARRICADES SHALL BE EQUIPPED WITH MONO-DIRECTIONAL TYPE A AMBER FLASHING LIGHTS.
9. ALL EXISTING SIGNS THAT CONFLICT WITH THE TRAFFIC CONTROL PLAN SHALL BE COVERED OR REMOVED IN ACCORDANCE WITH ARTICLE 107.25 OF THE STANDARD SPECIFICATIONS.
10. THE CONTRACTOR SHALL BE REQUIRED TO REMOVE ALL EXISTING PAVEMENT MARKINGS WHICH CONFLICT WITH THE DESIGNATED TRAFFIC CONTROL PLAN.
11. THE CONTRACTOR SHALL BE REQUIRED TO MAINTAIN TRAFFIC IN ACCORDANCE WITH THE MAINTENANCE OF TRAFFIC PLANS, SPECIAL PROVISIONS, APPLICABLE STATE STANDARDS, AND AS DIRECTED BY THE ENGINEER. ANY CHANGES TO THE MAINTENANCE OF TRAFFIC SHALL BE SUBMITTED TO THE ENGINEER FOR APPROVAL PRIOR TO IMPLEMENTING ANY CHANGES.
12. TRAFFIC CONDITIONS, ACCIDENTS, AND OTHER UNFORESEEN EMERGENCY CONDITIONS MAY REQUIRE THE ENGINEER TO RESTRICT, MODIFY OR REMOVE LANE CLOSURES OR CHANNELIZATION SHOWN IN THE PLANS. THE CONTRACTOR SHALL PROMPTLY RESPOND AT THE TIME OF NOTIFICATION BY THE ENGINEER FOR THE MAINTENANCE OF TRAFFIC CONTROL DEVICES.
13. THE ENGINEER SHALL BE INFORMED A MINIMUM OF 48 HOURS IN ADVANCE OF ANY PROPOSED CHANGE TO THE SUGGESTED STAGES OF CONSTRUCTION AND TRAFFIC CONTROL PLAN.
14. ALL TEMPORARY PAVEMENT MARKINGS SHOWING DETERIORATION AFTER SEVEN (7) DAYS OF SERVICE SHALL BE REPLACED BY THE CONTRACTOR AS DIRECTED BY THE ENGINEER. ALL MARKINGS THAT REQUIRE REPLACEMENT PRIOR TO SEVEN (7) DAYS OF SERVICE SHALL BE REPLACED BY THE CONTRACTOR AT HIS EXPENSE.
15. WHEN THEY ARE NO LONGER NECESSARY, ALL TRAFFIC CONTROL DEVICES SHALL IMMEDIATELY BE REMOVED, COVERED OR TURNED AWAY FROM TRAFFIC. W21-1 WORKER AND W20-7 FLAGGER SIGNS SHALL BE REMOVED OR COVERED WHEN NOT APPLICABLE FOR GREATER THAN ONE HOUR. WHEN A SIGN IS COVERED, ITS POST SHALL HAVE A REFLECTIVE 3" X 6" DELINEATOR INSTALLED. THE COST OF THE DELINEATOR IS INCLUDED IN THE COST OF TRAFFIC CONTROL AND PROTECTION, (SPECIAL).
16. TEMPORARY CONCRETE BARRIERS AND TEMPORARY IMPACT ATTENUATORS SHALL BE PLACED AS SHOWN IN THE PLANS. FURNISHING, INSTALLING AND RELOCATING TEMPORARY CONCRETE BARRIER AND TEMPORARY IMPACT ATTENUATORS SHALL BE IN ACCORDANCE WITH IDOT SPECIAL PROVISIONS, IDOT HIGHWAY STANDARDS, STANDARD SPECIFICATIONS, AND AS DIRECTED BY THE ENGINEER.
17. IMMEDIATELY AFTER THE COMPLETION OF CONSTRUCTION, THE CONTRACTOR SHALL RESTORE ALL PERMANENT PAVEMENT MARKINGS, SIGNS, AND OTHER TRAFFIC CONTROL DEVICES THAT WERE COVERED, REMOVED, DAMAGED OR OTHERWISE AFFECTED BY CONSTRUCTION.
18. THE CONTRACTOR SHALL PROVIDE ADEQUATE TEMPORARY DRAINAGE AND EROSION CONTROL PROTECTION DURING ALL STAGES OF CONSTRUCTION.
19. ACCESS TO ALL PRIVATE AND COMMERCIAL DRIVEWAYS AND ENTRANCES ARE TO BE MAINTAINED DURING CONSTRUCTION.
20. MAINTENANCE OF TRAFFIC WIDTH RESTRICTION REQUIREMENT - THE CONTRACTOR SHALL NOTIFY THE DISTRICT ONE TRAFFIC CONTROL SUPERVISOR, IN WRITING, WHEN THE CONTRACTOR RECEIVES AN AWARD LETTER FOR THE CONTRACT. THE LETTER SHALL STATE THE ANTICIPATED START DATE OF LANE WIDTH RESTRICTIONS. THE TWENTY-ONE (21) DAY NOTICE WILL START FROM THE AWARD DATE. NO WIDTH RESTRICTIONS WILL BE ALLOWED UNTIL TWENTY-ONE (21) DAYS AFTER RECEIVING NOTICE FROM THE CONTRACTOR. THE CONTRACTOR MAY ELECT TO PROVIDE THE ANTICIPATED START DATE OF LANE WIDTH RESTRICTIONS AT PRECONSTRUCTION MEETING AS LONG AS THERE IS A MINIMUM OF TWENTY-ONE (21) DAYS ADVANCED NOTICE.

**SUGGESTED SEQUENCE OF CONSTRUCTION & MAINTENANCE OF TRAFFIC**

THE FOLLOWING SEQUENCE OF CONSTRUCTION AND MAINTENANCE OF TRAFFIC IS SUGGESTED. VARIATIONS MAY BE MADE WITH THE APPROVAL OF THE ENGINEER.

FOR EACH STAGE OF CONSTRUCTION, PROVIDE TRAFFIC CONTROL AS SHOWN ON THE MAINTENANCE OF TRAFFIC PLANS. COORDINATE INSTALLATION OF TEMPORARY PAVEMENT MARKINGS AND OTHER TRAFFIC CONTROL DEVICES WITH THE EXISTING TRAFFIC PATTERNS AT THE PROJECT LIMITS.

SEQUENCE OF CONSTRUCTION:

PRE-STAGE

1. INSTALL PORTABLE CHANGEABLE MESSAGE SIGNS AS DIRECTED BY THE ENGINEER.
2. INSTALL EROSION CONTROL DEVICES PER THE EROSION CONTROL PLANS.

STAGE I

1. REMOVE AND REPLACE EXISTING SHOULDER AND INSTALL TEMPORARY PAVEMENT ALONG THE SOUTHBOUND LANE OF US 45 FOR STAGE I TRAFFIC LANES. UTILIZING DAYTIME LANE CLOSURES. THIS WORK SHALL BE COMPLETED WITHIN A DURATION OF TWO WEEKS.
2. INSTALL ADVANCED SIGNAGE AND STAGE I TRAFFIC CONTROL ON US 45 ACCORDING TO THE PLANS. SHIFT TRAFFIC WEST TO STAGE I TRAFFIC LANES
3. INSTALL TEMPORARY SOIL RETENTION SYSTEM. REMOVE THE STAGE I PORTION OF THE EXISTING CULVERT AS INDICATED IN THE PLANS AND INSTALL THE STAGE I PORTION OF THE PROPOSED CAST-IN-PLACE CULVERT.
4. CONSTRUCT THE US 45 MAINLINE PAVEMENT OVER THE COMPLETED PORTION OF THE CULVERT. REMOVE TEMPORARY SOIL RETENTION SYSTEM.
5. REMOVE AND REPLACE EXISTING SHOULDER AND INSTALL TEMPORARY PAVEMENT ALONG THE NORTHBOUND LANE OF US 45 FOR STAGE II TRAFFIC LANES.
6. MAINTAIN ALL EROSION CONTROL DEVICES.

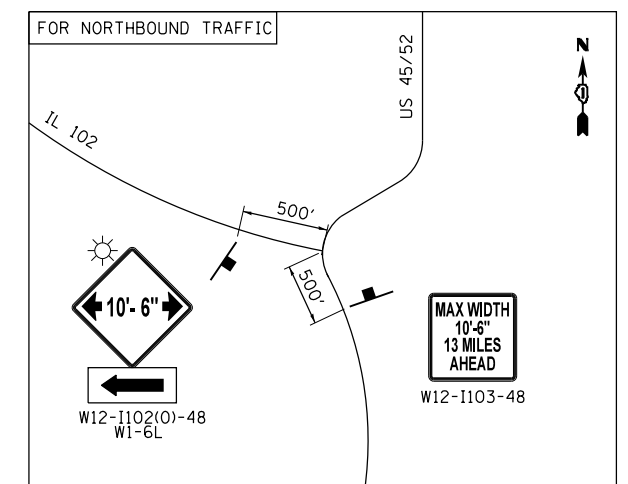
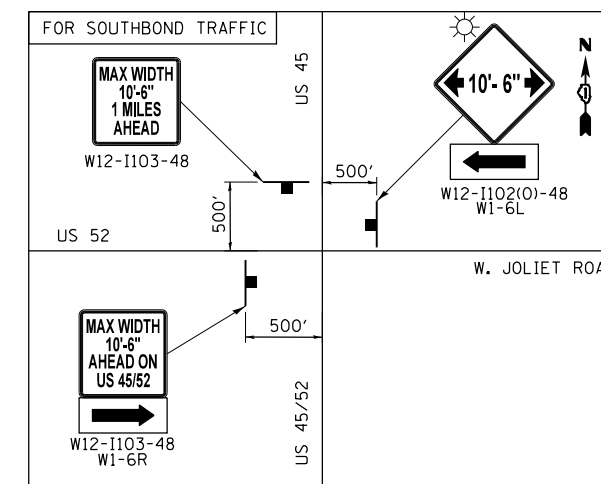
STAGE II

1. INSTALL STAGE II TRAFFIC CONTROL ON US 45.
2. SHIFT TRAFFIC EAST TO STAGE II TRAFFIC LANES.
3. REMOVE STAGE I TRAFFIC CONTROL DEVICES.
4. INSTALL TEMPORARY SOIL RETENTION SYSTEM. REMOVE THE REMAINING PORTION OF THE EXISTING CULVERT AS INDICATED IN THE PLANS AND INSTALL THE STAGE 2 PORTION OF THE PROPOSED CAST-IN-PLACE PIPE CULVERT.
5. CONSTRUCT THE US 45 MAINLINE PAVEMENT OVER THE COMPLETED PORTION OF THE CULVERT.
6. REPLACE THE SHOULDER PAVEMENT REMOVED FOR THE CULVERT WORK. REMOVE TEMPORARY SOIL RETENTION SYSTEM.
7. SAWCUT (FULL DEPTH) THE WEST SHOULDER EDGE OF PAVEMENT AND REMOVE THE TEMPORARY PAVEMENT.
8. RESHAPE, COMPACT AND GRADE THE ROAD EMBANKMENT OUTSIDE THE SHOULDER.
9. REMOVE STAGE 2 TRAFFIC CONTROL DEVICES.
10. SHIFT TRAFFIC TO CENTER OF US 45.

STAGE III

1. SAWCUT (FULL DEPTH) THE EAST SHOULDER EDGE OF PAVEMENT AND REMOVE THE TEMPORARY PAVEMENT.
2. RESHAPE, COMPACT AND GRADE THE ROAD EMBANKMENT OUTSIDE THE SHOULDER.
3. COMPLETE ALL UNFINISHED LANDSCAPING.
4. MILL EXISTING PAVEMENT AND PLACE HMA LEVELING BINDER AND HMA SURFACE COURSE OVER THE THROUGH LANE PAVEMENT UTILIZING HIGHWAY STANDARD 701201.
5. INSTALL PERMANENT PAVEMENT MARKINGS AND SIGNAGE ON IL ROUTE 45 UTILIZING HIGHWAY STANDARD 701306.
6. REMOVE TEMPORARY EROSION CONTROL DEVICES.

**ADVANCED SIGNAGE AT INTERSECTIONS**



\$PLTDIVL\$

\$PENTBL\$

FILE NAME = D:\2016\11-11-16\11-16-16\11-16-16.dgn  
\$SYSPRINTER.NAME\$



USER NAME = jpong	DESIGNED - JKP	REVISED -
	DRAWN - JKP	REVISED -
PLOT SCALE = 40.0000' / in.	CHECKED - SRK	REVISED -
PLOT DATE = 12/13/2017	DATE - 12/13/2017	REVISED -

**STATE OF ILLINOIS  
DEPARTMENT OF TRANSPORTATION**

**U.S. ROUTE 45/U.S. ROUTE 52 OVER UNNAMED DITCH  
MAINTENANCE OF TRAFFIC GENERAL NOTES**

SCALE: SHEET 1 OF 3 SHEETS STA. TO STA.

F.A.P. RTE.	SECTION	COUNTY	TOTAL SHEETS	SHEET NO.
330	2015-038B	WILL	34	12
CONTRACT NO. 62A95				
ILLINOIS FED. AID PROJECT				





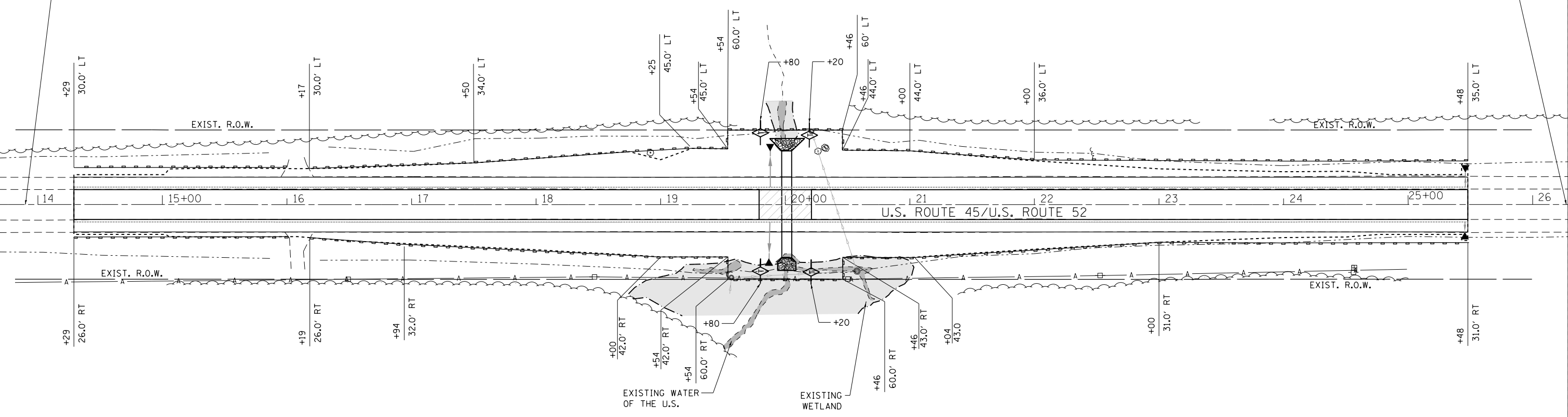
it:\cad-gis\proj-support-files\plot\81652\pdf\_ID01\_monoplot.dwg

ido2014.tbl

FILE NAME = D:\2015\11-eros.dgn

**PROJECT BEGINS  
STA. 13 + 90**

**PROJECT ENDS  
STA. 26 + 27**

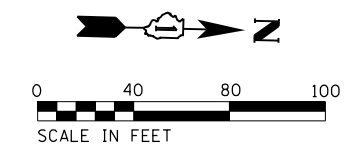


**EROSION CONTROL NOTES**

1. UNDER NO CIRCUMSTANCES SHALL THE CONTRACTOR PROLONG FINAL GRADING AND SHAPING SO THAT THE ENTIRE PROJECT CAN BE PERMANENTLY SEEDED AT ONE TIME.
2. EROSION CONTROL ITEMS ARE CONSIDERED TO BE A HIGH PRIORITY ON THIS CONTRACT. THE CONTRACTOR IS RESPONSIBLE FOR INSTALLATION OF ANY ADDITIONAL EROSION CONTROL MEASURES NECESSARY TO PREVENT EROSION AND SEDIMENTATION AS DETERMINED BY THE RESIDENT ENGINEER.
3. THIS PROJECT REQUIRES A US ARMY CORPS OF ENGINEERS (USACE) 404 PERMIT THAT WILL BE SECURED BY THE DEPARTMENT. ALL CONDITIONS OF THE 404 PERMIT, FOUND IN THE SPECIAL PROVISIONS, MUST BE FOLLOWED. AS A CONDITION OF THIS PERMIT, THE CONTRACTOR WILL NEED TO SUBMIT AN IN-STREAM WORK PLAN (INCLUDING WORK WITHIN WETLANDS) TO THE DEPARTMENT FOR APPROVAL. GUIDELINES ON ACCEPTABLE IN-STREAM WORK TECHNIQUES (INCLUDING WORK WITHIN WETLANDS) CAN BE FOUND ON THE USACE WEBSITE. THE USACE DEFINES AND DETERMINES IN-STREAM WORK. THE COST OF ALL MATERIALS AND LABOR NECESSARY TO COMPLY WITH THE ABOVE PROVISIONS TO PREPARE AND IMPLEMENT AN IN-STREAM WORK PLAN (INCLUDING WORK WITHIN WETLANDS) WILL NOT BE PAID FOR SEPARATELY, BUT SHALL BE CONSIDERED AS INCLUDED IN THE UNIT BID PRICES OF THE CONTRACT AND NO ADDITIONAL COMPENSATION WILL BE ALLOWED.

**EROSION CONTROL LEGEND**

- TEMPORARY DITCH CHECK
- PERIMETER EROSION BARRIER
- WETLANDS
- WATER OF THE U.S.



USER NAME = dwoznarski	DESIGNED - JKP	REVISED -
PLOT SCALE = 80.000' / in.	DRAWN - JKP	REVISED -
PLOT DATE = 12/13/2017	CHECKED - SRK	REVISED -
	DATE - 12/13/2017	REVISED -

**STATE OF ILLINOIS  
DEPARTMENT OF TRANSPORTATION**

**U.S. ROUTE 45/U.S. ROUTE 52 OVER UNNAMED DITCH  
EROSION AND SEDIMENT CONTROL PLAN**

SCALE: 1" = 40' SHEET 1 OF 1 SHEETS STA. TO STA.

F.A.P. RTE.	SECTION	COUNTY	TOTAL SHEETS	SHEET NO.
330	2015-038B	WILL	34	15
CONTRACT NO. 62A95				
ILLINOIS FED. AID PROJECT				





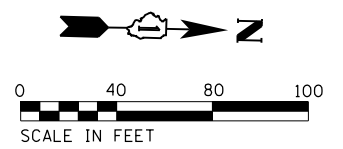
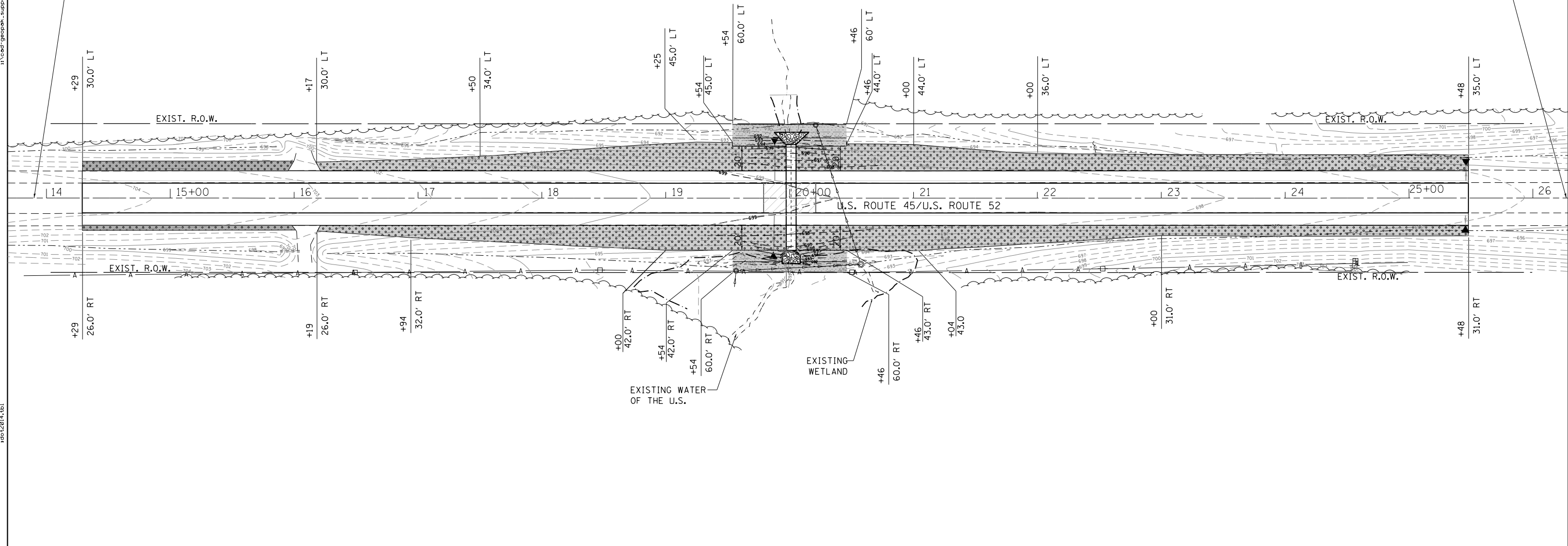
\\ced-greepok-support\files\plots\81652\pdf\_ID01\_monoplot.fg

ido12014.tbl

FILE NAME = D:\2015\11\1\landscape.dgn

**PROJECT BEGINS  
STA. 13+90**

**PROJECT ENDS  
STA. 26+27**



**RESTORATION LEGEND**

- SEEDING, CLASS 2A W/ EROSION CONTROL BLANKET
- SEEDING, CLASS 4 W/ EROSION CONTROL BLANKET



USER NAME = dwozniarski	DESIGNED - JKP	REVISED -
DRAWN - JKP	REVISED -	
PLOT SCALE = 80.000' / in.	CHECKED - SRK	REVISED -
PLOT DATE = 12/13/2017	DATE - 12/13/2017	REVISED -

**STATE OF ILLINOIS  
DEPARTMENT OF TRANSPORTATION**

**U.S. ROUTE 45/U.S. ROUTE 52 OVER UNNAMED DITCH  
GRADING AND RESTORATION PLAN**

SCALE: 1" = 40'    SHEET 1 OF 1 SHEETS    STA.                      TO STA.

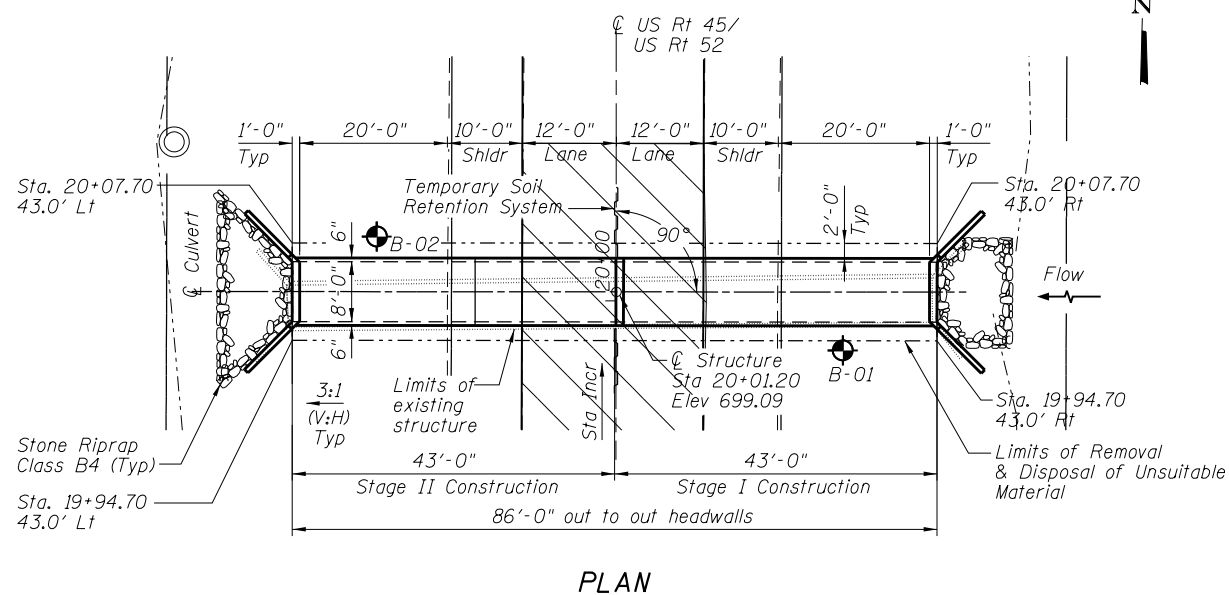
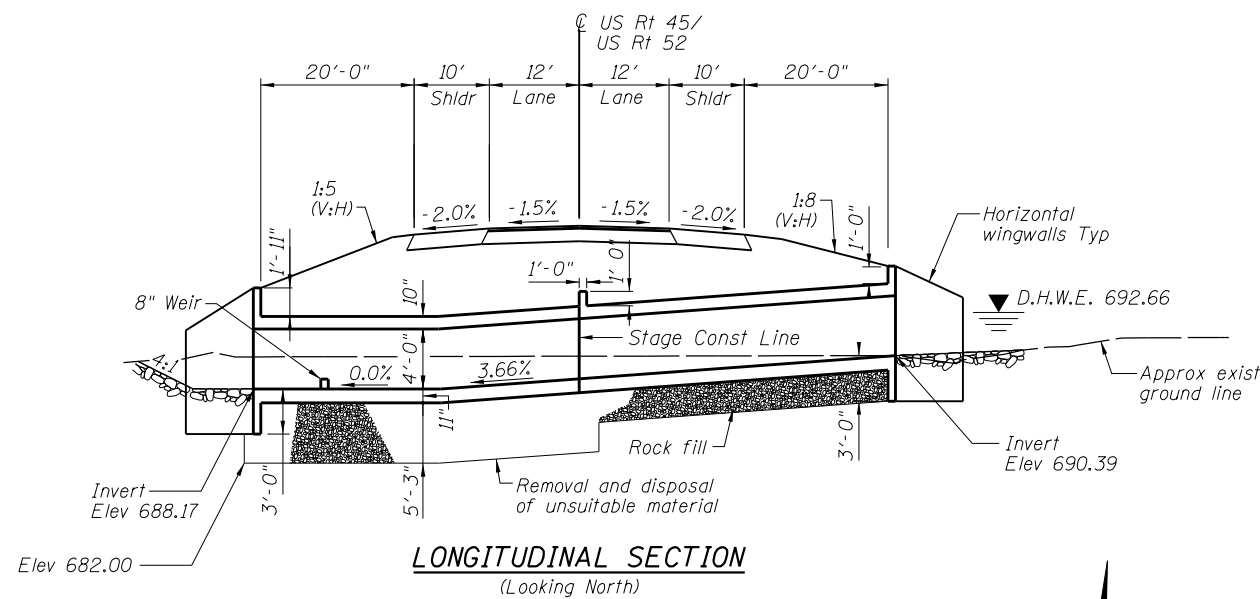
F.A.P. RTE. 330	SECTION 2015-038B	COUNTY WILL	TOTAL SHEETS 34	SHEET NO. 17
CONTRACT NO. 62A95				
ILLINOIS FED. AID PROJECT				

Existing Structure (099-0527):  
Originally built in 1967 as an 86' long single cell  
5'x5" CIP concrete box culvert with a 0° skew.

Traffic Control:  
Two lanes of traffic shall be maintained  
utilizing Stage Construction.

Benchmark:  
Railroad Spike in power pole  
East of East ditch line. Elev. 693.83

No salvage.

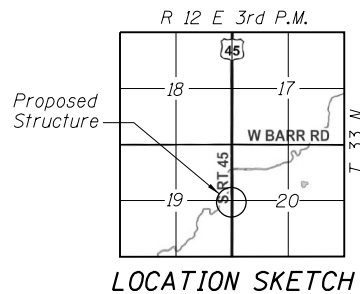


**WATERWAY INFORMATION**

Drainage Area = 0.2 sq mi Low Grade Elev. 699.10 @ Sta. 14+30.00

Flood	Freq. Yr.	Q C.F.S.	Opening Sq. Ft.		Nat. H.W.E.		Head - Ft.		Headwater El.	
			Exist.	Prop.	Exist.	Prop.	Exist.	Prop.	Exist.	Prop.
Design	10	70	9.7	15.4	692.32	0.07	0.02	693.07	692.34	
Base	50	113	11.3	18.2	692.66	1.52	0.48	694.18	693.14	
Max. Calc.	100	130	11.9	19.0	692.77	1.82	0.66	694.59	693.43	
	500	165	13.2	21.2	693.04	2.38	0.97	695.42	694.01	

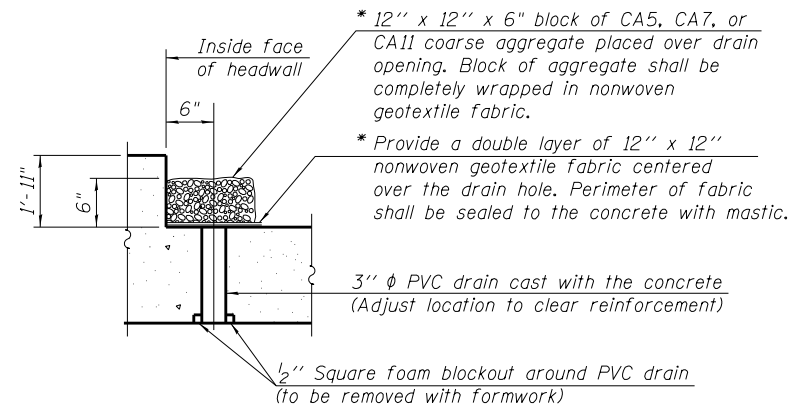
10 year velocity through existing structure = 13.4 ft/s  
10 year velocity through proposed structure = 3.7 ft/s



**GENERAL NOTES**

- Precast alternate is not allowed.
- All excavation required for construction of the culvert as shown in these plans and in accordance with the standard specifications shall be included in the cost for Concrete Box Culverts.
- The Contractor shall be responsible to divert the stream during construction to keep construction area free of water. The method of water diversion shall be subject to the approval of the Engineer and the cost shall be included in the cost for Concrete Box Culverts.
- Layout of the slope protection system may be varied to suit ground conditions in the field and as directed by the Engineer
- The limits and quantities of soil removal and replacement shown are based on the boring data and may be modified by the District Geotechnical and Field Engineers for variable subsurface conditions encountered in the field.
- A cantilevered sheet piling design does not appear feasible and additional members or other retention systems may be necessary. The Contractor shall submit a temporary soil retention system design including plan details and calculations for review and acceptance by the Engineer.

\* Nonwoven geotextile fabric shall conform to the requirements of Article 1080.01 of the Standard Specifications. The minimum weight of the fabric shall be 6 ounces per square yard.

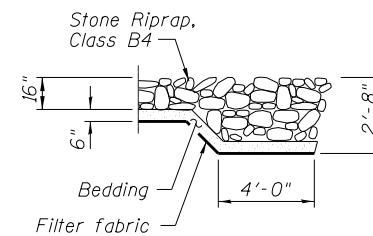


**DRAIN DETAIL**

(All costs associated with furnishing and constructing the above drain detail will not be measured for payment but shall be included in the contract unit price for the associated work.)

**INDEX OF SHEETS**

- General Plan and Elevation
- Temporary Concrete Barrier For Stage Construction
- Construction Staging Details
- Culvert Plan
- Concrete Box Culvert Details
- Bar Splicer Assembly and Mechanical Splicer Details



**RIPRAP FLANK DETAIL**

**DESIGN SPECIFICATIONS**

2014 AASHTO LRFD Bridge Design Specifications  
7th Edition with 2016 Interims

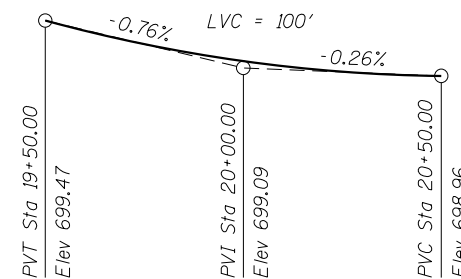
**DESIGN STRESSES**

**FIELD UNITS**

f'c = 3,500 psi  
fy = 60,000 psi (Reinforcement)

**LOADING HL-93**

Allow 50#/sq. ft. for future wearing surface.



**PROFILE GRADE - US RT 45/US RT 52**

**TOTAL BILL OF MATERIAL**

Item	Unit	Quantity
Removal of Existing Structures	Each	1
Concrete Box Culverts	Cu Yd	73.0
Reinforcement Bars	Pound	13,870
Bar Splicers	Each	46
Temporary Soil Retention System	Sq Ft	570
Porous Granular Embankment	Cu Yd	170
Rock Fill	Cu Yd	160
Removal and Disposal of Unsuitable Material	Cu Yd	160

**GENERAL PLAN AND ELEVATION**

**FAP ROUTE 330 (US 45/US 52) OVER**

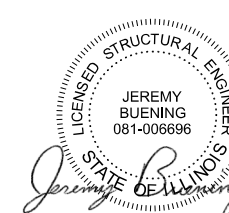
**UNNAMED DITCH**

**SECTION 2015-038B**

**WILL COUNTY**

**STA 20+01.20**

**STRUCTURE NO. 099-0916**



Jeremy Buening, P.E., S.E.  
License Expires 11/30/18

Date 10/11/2017

STATE OF ILLINOIS  
DEPARTMENT OF TRANSPORTATION

U.S. ROUTE 45/U.S. ROUTE 52 OVER UNNAMED DITCH  
GENERAL PLAN AND ELEVATION

SCALE: SHEET 1 OF 6 SHEETS STA. TO STA.

F.A.P. RTE.	SECTION	COUNTY	TOTAL SHEETS	SHEET NO.
330	2015-038B	WILL	34	18
CONTRACT NO. 62A95				
ILLINOIS FED. AID PROJECT				

CHASTAIN & ASSOCIATES LLC  
CONSULTING ENGINEERS  
184-001397

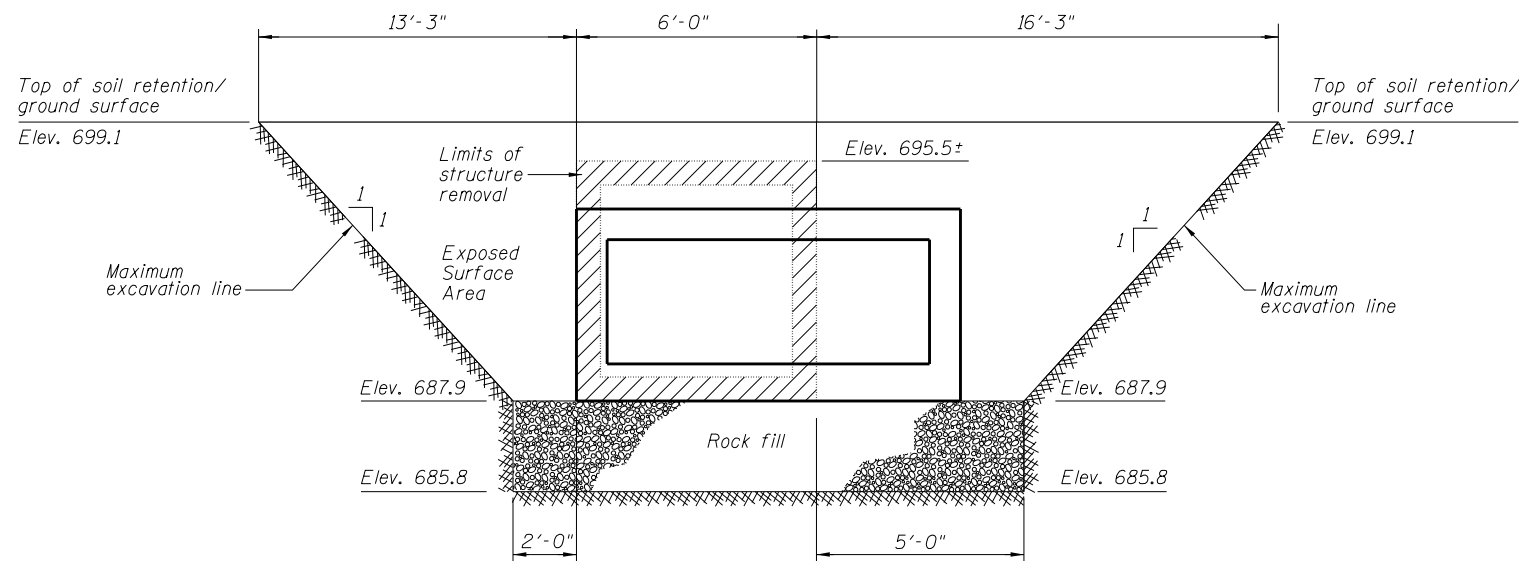
USER NAME = jpong	DESIGNED - JMB	REVISED -
PLOT SCALE = 25.60' / 1" =	DRAWN - RLK	REVISED -
PLOT DATE = 12/14/2017	CHECKED - SRK	REVISED -
	DATE - 12/13/2017	REVISED -

SPLETDVLS

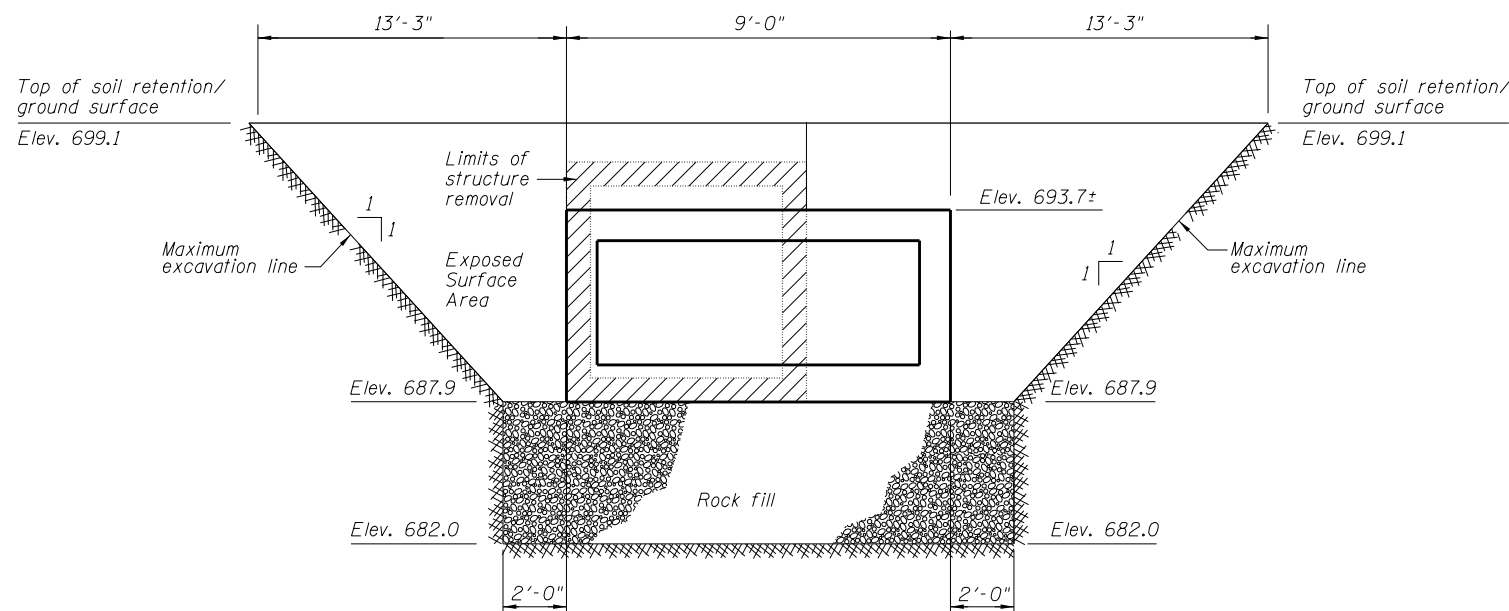
SPENTBLS

FILE NAME = D:\2015-038B-shr\_details-culv.dgn  
PLOTTER = HP DesignJet 5000PS

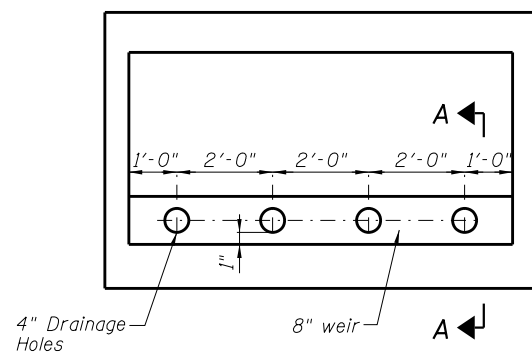




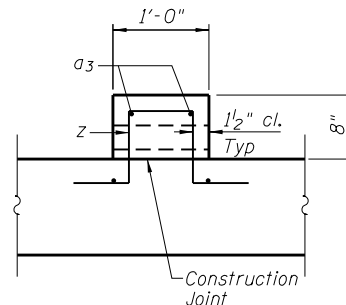
**STAGE I - TEMPORARY SOIL RETENTION DETAIL**  
(Looking Upstation)



**STAGE II - TEMPORARY SOIL RETENTION DETAIL**  
(Looking Upstation)



**WEIR DETAIL**



**SECTION A-A**

**Notes:**

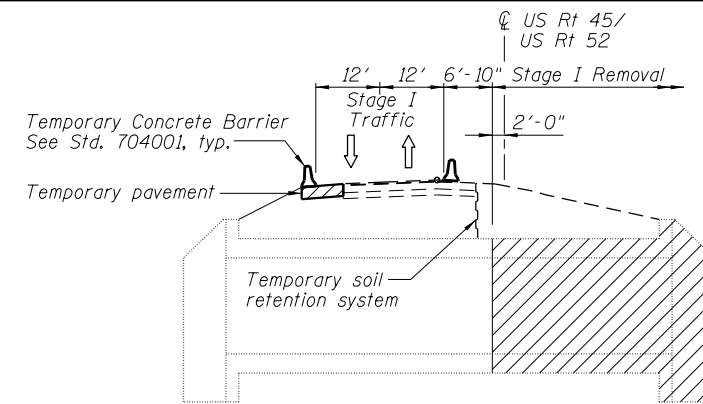
For quantity of Temporary Concrete Barrier and related traffic control, See Roadway plans.

Staging dimensions measured at Rt angles to 1L Rt 45/52.

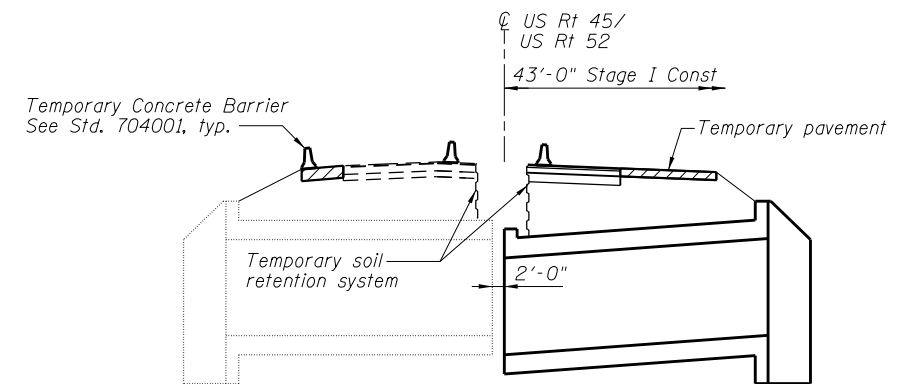
Hatched area indicates removal of existing structure.

See Sheet 4 of 6 for quantities and bar details for weir.

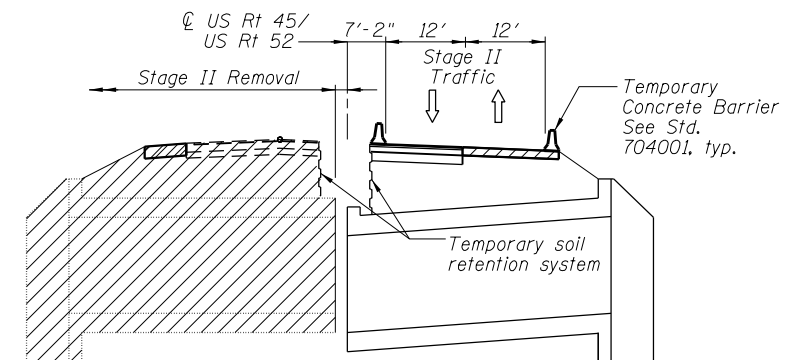
For pay item limits for Porous Granular Embankment, see Detail of Excavation and Backfill for Box Culverts on Sheet 5 of 6.



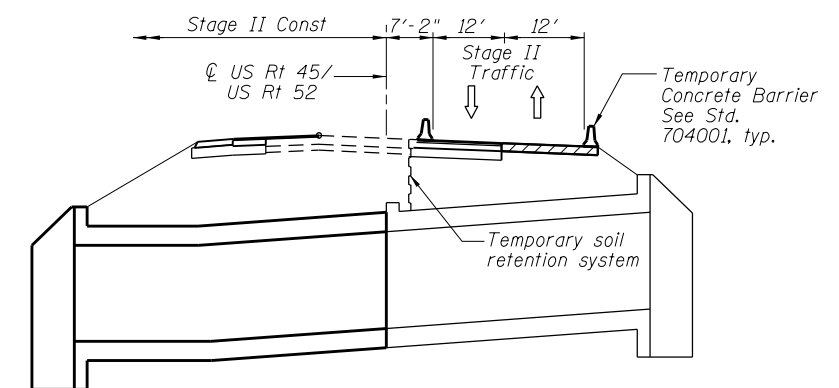
**STAGE I REMOVAL**



**STAGE I CONSTRUCTION**



**STAGE II REMOVAL**



**STAGE II CONSTRUCTION**

**BILL OF MATERIAL**

Item	Unit	Quantity
Temporary Soil Retention System	Sq. Ft.	570

**STATE OF ILLINOIS  
DEPARTMENT OF TRANSPORTATION**

**U.S. ROUTE 45/U.S. ROUTE 52 OVER UNNAMED DITCH  
CONSTRUCTION STAGING DETAILS**

SCALE: SHEET 3 OF 6 SHEETS STA. TO STA.

F.A.P. RTE.	SECTION	COUNTY	TOTAL SHEETS	SHEET NO.
330	2015-038B	WILL	34	20
CONTRACT NO. 62A95				

ILLINOIS FED. AID PROJECT

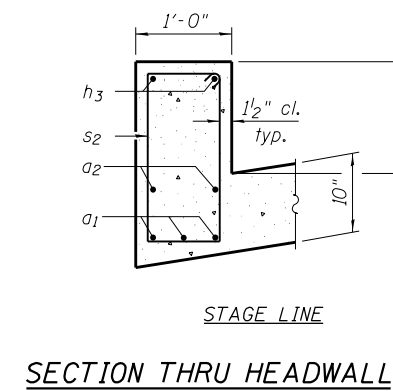
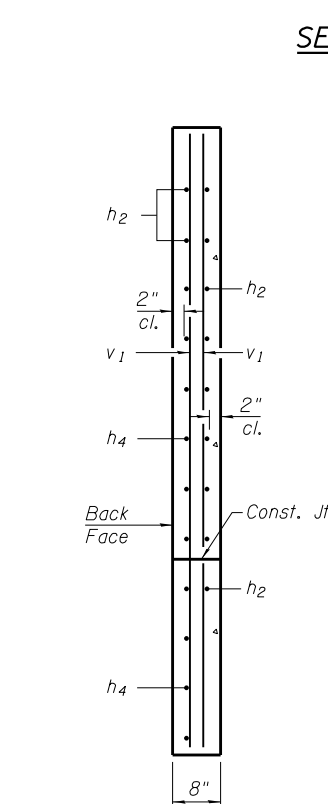
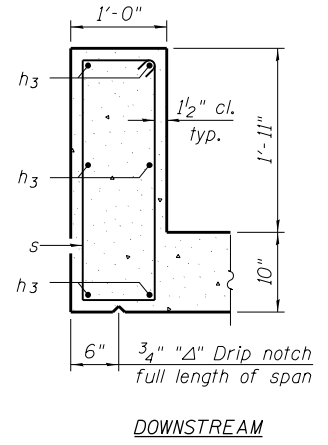
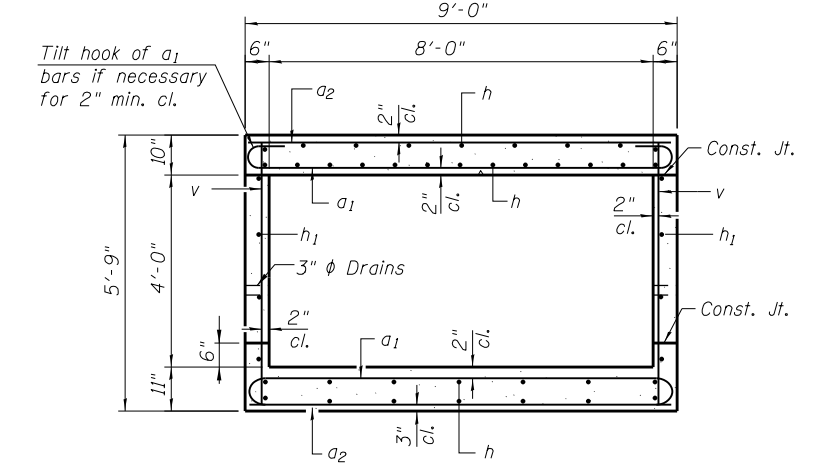
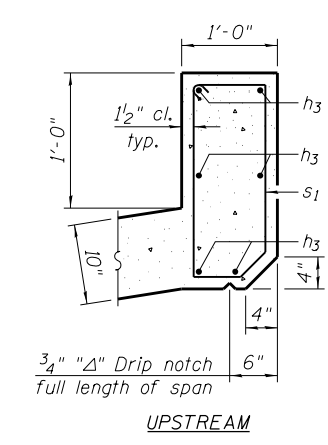
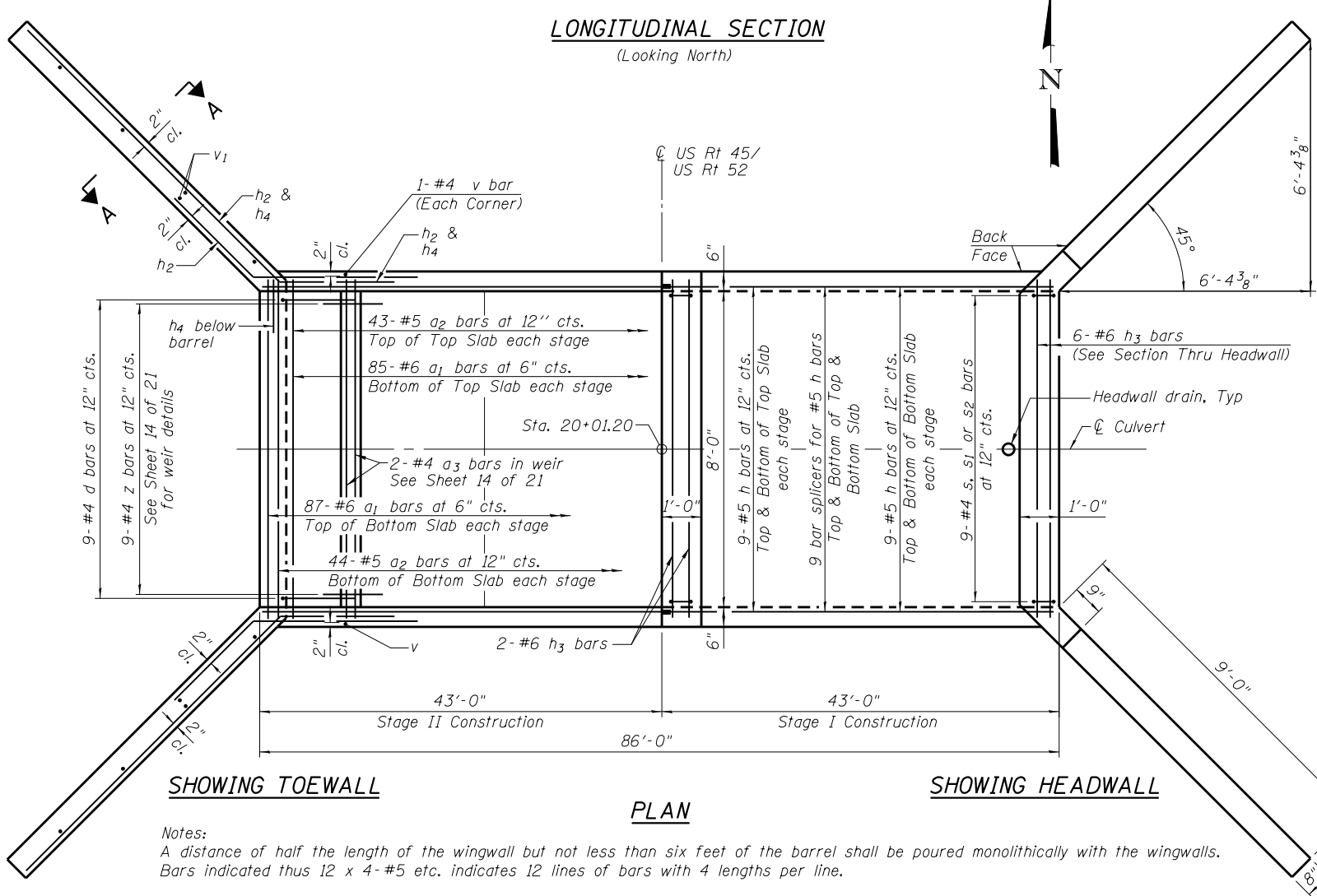
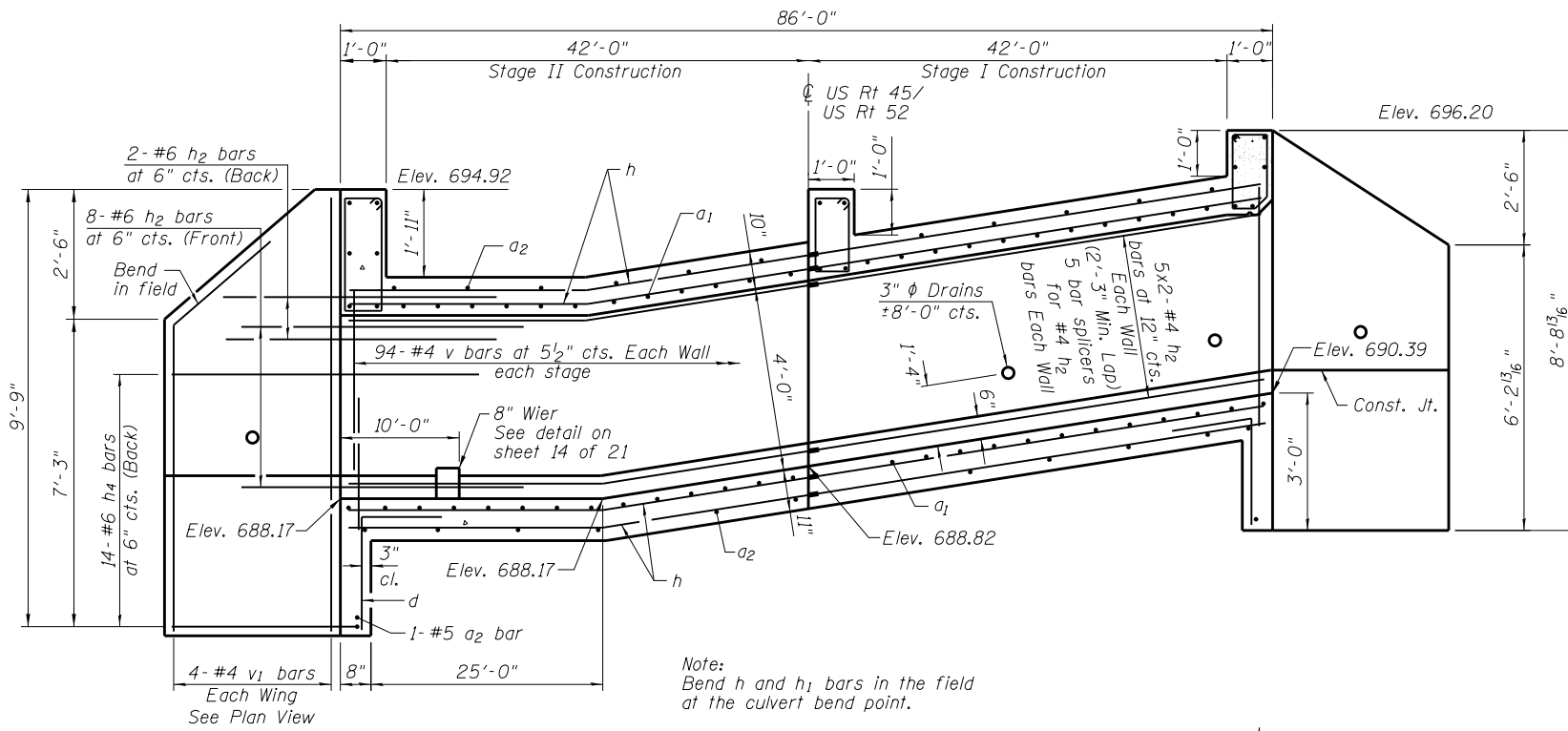
\$PLTDIVL\$

\$PENTBLS\$

FILE NAME = D:\2015\11-14\11-14-2015\11-14-2015.dgn  
\$SYSPRINTER.NAME\$

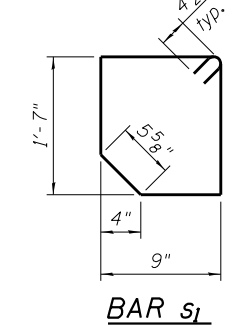
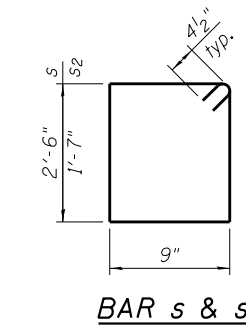
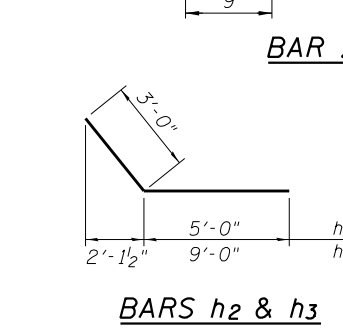
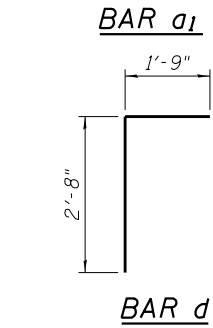
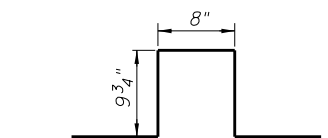
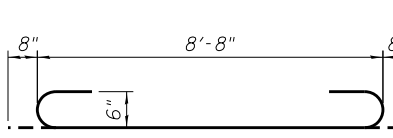
**CHASTAIN & ASSOCIATES LLC**  
CONSULTING ENGINEERS  
184-001397

USER NAME = jpong	DESIGNED - JMB	REVISED -
PLOT SCALE = 4.00' / in.	DRAWN - RLK	REVISED -
PLOT DATE = 12/14/2017	CHECKED - SRK	REVISED -
	DATE - 12/13/2017	REVISED -



**BILL OF MATERIAL**

Bar	No.	Size	Length	Shape
a <sub>1</sub>	344	#6	10'-0"	[Symbol]
a <sub>2</sub>	176	#5	8'-8"	[Symbol]
a <sub>3</sub>	2	#4	7'-8"	[Symbol]
d	18	#4	4'-5"	[Symbol]
h	72	#5	42'-6"	[Symbol]
h <sub>1</sub>	40	#4	22'-6"	[Symbol]
h <sub>2</sub>	40	#6	8'-0"	[Symbol]
h <sub>3</sub>	14	#6	8'-8"	[Symbol]
h <sub>4</sub>	56	#6	12'-0"	[Symbol]
s	9	#4	7'-3"	[Symbol]
s <sub>1</sub>	9	#4	5'-3"	[Symbol]
s <sub>2</sub>	9	#4	5'-5"	[Symbol]
v	380	#4	5'-4"	[Symbol]
v <sub>1</sub>	16	#4	9'-5"	[Symbol]
z	9	#4	3'-10"	[Symbol]
Concrete Box Culverts			Cu. Yd.	73.0
Reinforcement Bars			Pound	13,870
Bar Splicers			Each	46



FILE NAME = D:\2016\15-16\15-16-01\15-16-01-01.dgn  
 \$PLOTDIR\$  
 \$PENTBL\$

TSA-SB-HC-ZS 10-15-2016

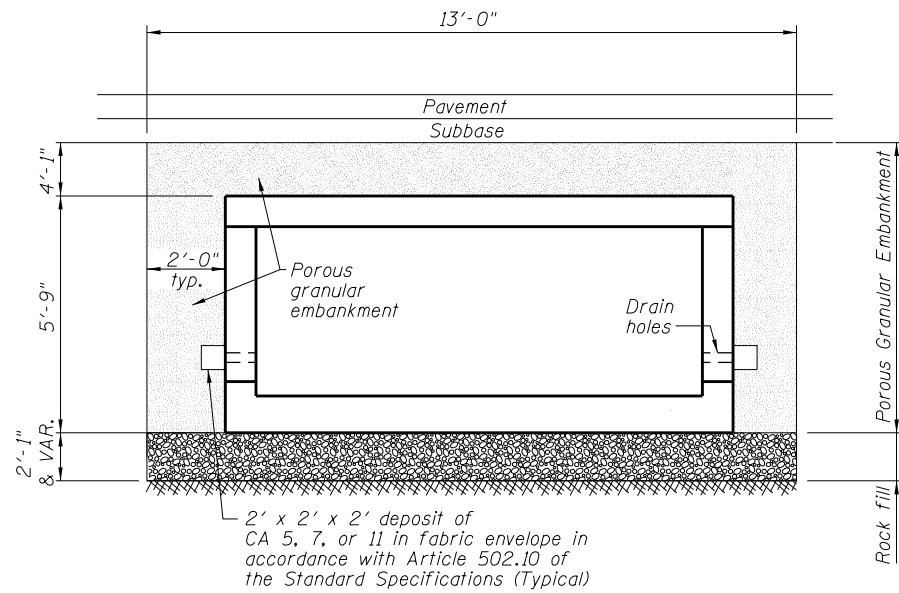
**CHASTAIN & ASSOCIATES LLC**  
 CONSULTING ENGINEERS  
 184-001397

USER NAME = jpong	DESIGNED - JMB	REVISED -
PLOT SCALE = 4.00' / in.	DRAWN - RLK	REVISED -
PLOT DATE = 12/13/2017	CHECKED - SRK	REVISED -
	DATE - 12/13/2017	REVISED -

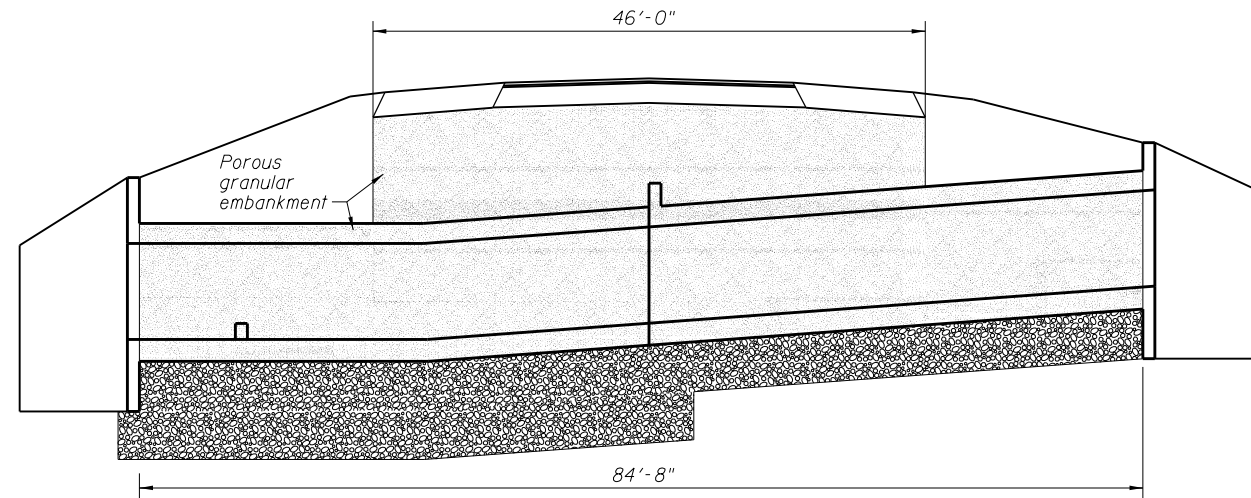
STATE OF ILLINOIS  
 DEPARTMENT OF TRANSPORTATION

U.S. ROUTE 45/U.S. ROUTE 52 OVER UNNAMED DITCH CULVERT PLAN	
SCALE:	SHEET 4 OF 6 SHEETS STA. TO STA.

F.A.P. RTE. 330	SECTION 2015-038B	COUNTY WILL	TOTAL SHEETS 34	SHEET NO. 21
			CONTRACT NO. 62A95	
ILLINOIS FED. AID PROJECT				



**SECTION THRU BARREL**



**LONGITUDINAL SECTION**

**Notes:**

1. Except as specified in this detail, the placement and compaction of backfill shall be in accordance with Article 502.10 of the Standard Specifications.
2. Porous granular embankment shall be placed in accordance with Section 207 of the Standard Specifications.
3. Rock fill shall be according to the Special Provisions.

**DETAIL OF EXCAVATION AND BACKFILL FOR BOX CULVERTS**

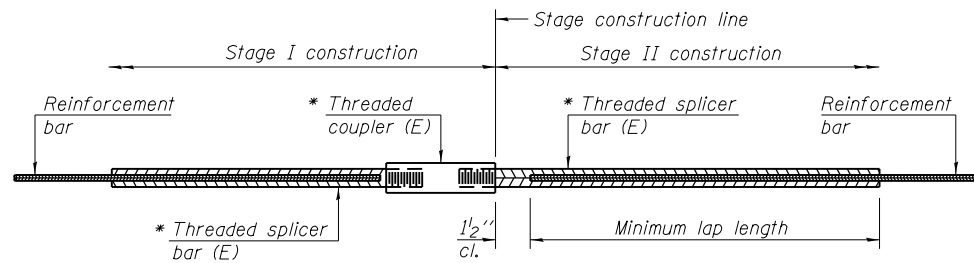
\$PLTDRVL\$

\$PENTBLS\$

FILE NAME = D:\2016\184-001397-111\details-cul.dgn  
 \$SYSPRINTER.NAME\$

USER NAME = jpong	DESIGNED - JMB	REVISED -
	DRAWN - RLK	REVISED -
PLOT SCALE = 4.00' / 1" =	CHECKED - SRK	REVISED -
PLOT DATE = 12/13/2017	DATE - 12/13/2017	REVISED -

F.A.P. RTE.	SECTION	COUNTY	TOTAL SHEETS	SHEET NO.
330	2015-038B	WILL	34	22
<b>CONTRACT NO. 62A95</b>				
ILLINOIS FED. AID PROJECT				

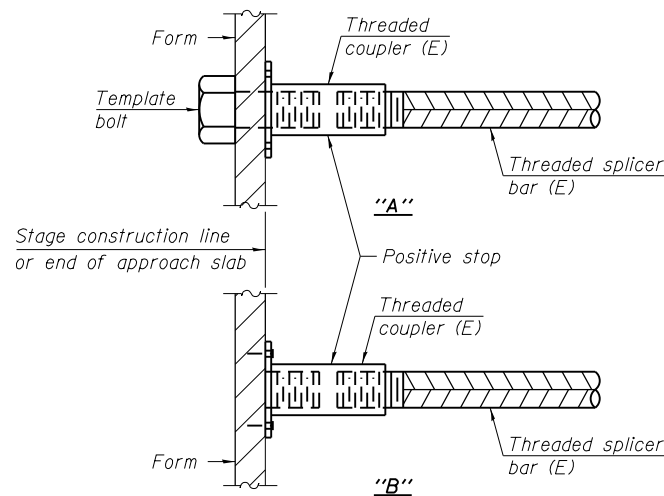


**STANDARD BAR SPLICER ASSEMBLY**

Threaded splicer bar length = min. lap length + 1 1/2" + thread length

\* Epoxy not required on Bar Splicer Assembly components used in conjunction with black bars.

Location	Bar size	No. assemblies required	Minimum lap length
Top Slab	#5	18	1'-8"
Bottom Slab	#5	18	1'-8"
Walls	#4	10	1'-4"

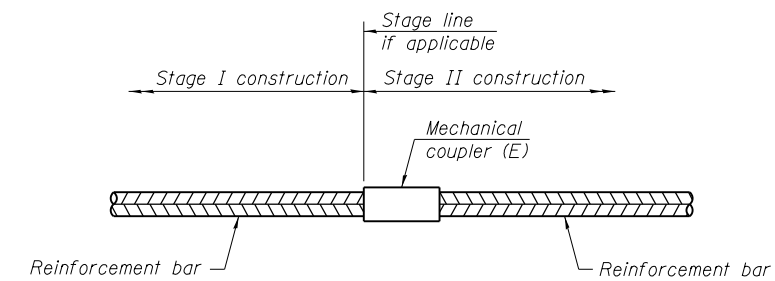


**INSTALLATION AND SETTING METHODS**

"A" : Set bar splicer assembly by means of a template bolt.

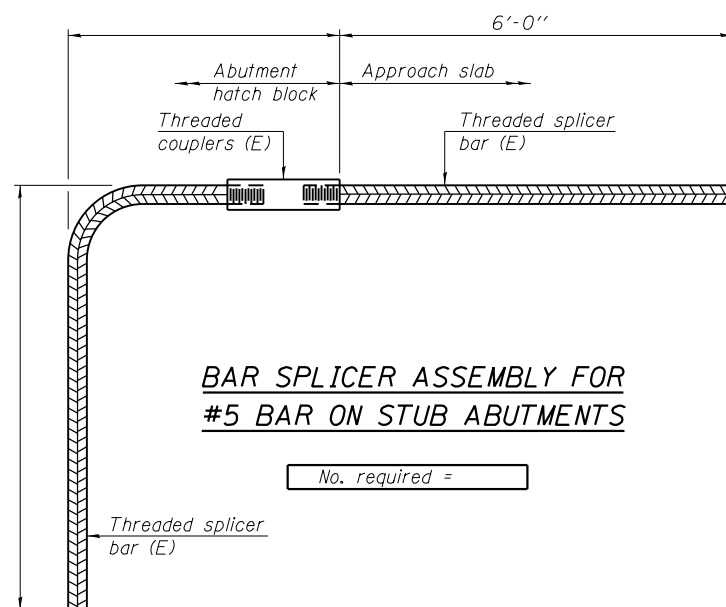
"B" : Set bar splicer assembly by nailing to wood forms or cementing to steel forms.

(E) : Indicates epoxy coating.



**STANDARD MECHANICAL SPLICER**

Location	Bar size	No. assemblies required



**BAR SPLICER ASSEMBLY FOR #5 BAR ON STUB ABUTMENTS**

No. required =

**NOTES**

Splicer bars shall be deformed with threaded ends and have a minimum 60 ksi yield strength.

All reinforcement shall be lapped and tied to the splicer bars. Bar splicer assemblies shall be epoxy coated according to the requirements for reinforcement bars. See Section 508 of the Standard Specifications.

See approved list of bar splicer assemblies and mechanical splicers for alternatives.

\$PLOTDRVL\$

\$PENTBLS\$

FILE NAME = D:\2016\184\184-001397\184-001397-184-001397-184-001397.dgn  
\$SYSPRINTER.NAME\$

BSD-1

2-17-2017



USER NAME = jpong	DESIGNED - JMB	REVISED -
PLOT SCALE = 4.00' / in.	DRAWN - RLK	REVISED -
PLOT DATE = 12/13/2017	CHECKED - SRK	REVISED -
	DATE - 12/13/2017	REVISED -

STATE OF ILLINOIS  
DEPARTMENT OF TRANSPORTATION

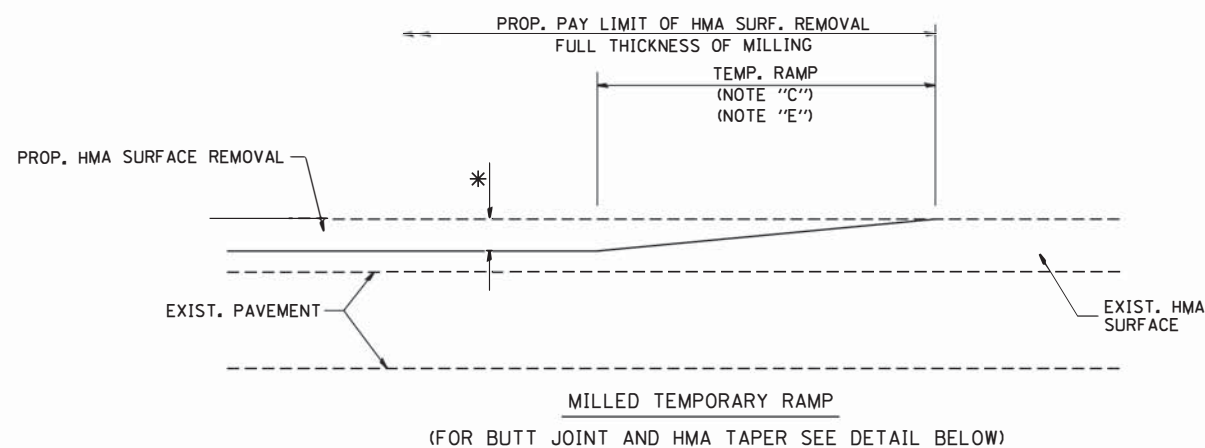
U.S. ROUTE 45/U.S. ROUTE 52 OVER UNNAMED DITCH  
BAR SPLICER ASSEMBLY AND MECHANICAL SPLICER DETAILS

SCALE: SHEET 6 OF 6 SHEETS STA. TO STA.

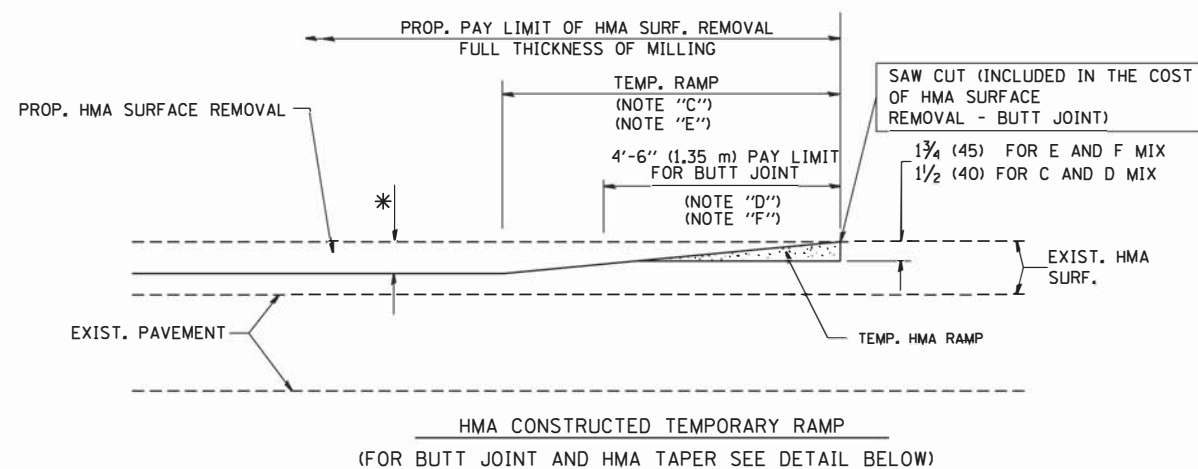
F.A.P. RTE.	SECTION	COUNTY	TOTAL SHEETS	SHEET NO.
330	2015-038B	WILL	34	23
CONTRACT NO. 62A95				
ILLINOIS FED. AID PROJECT				





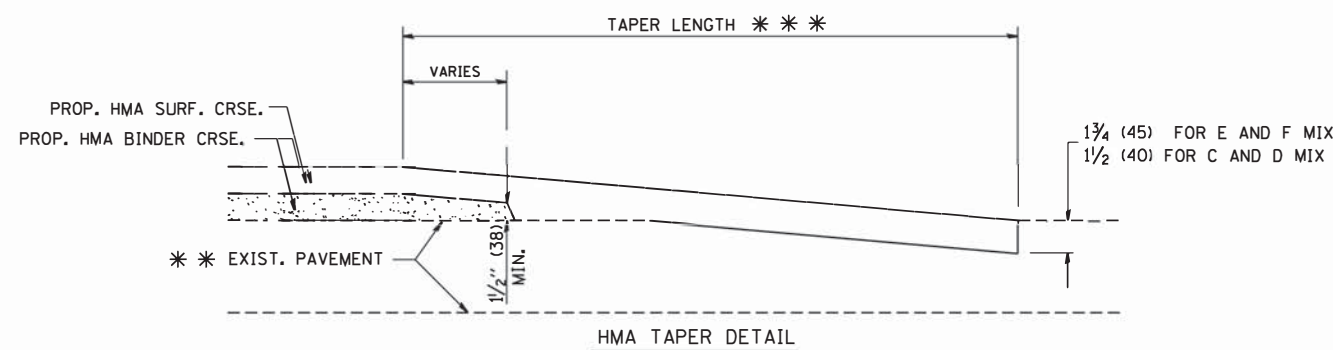
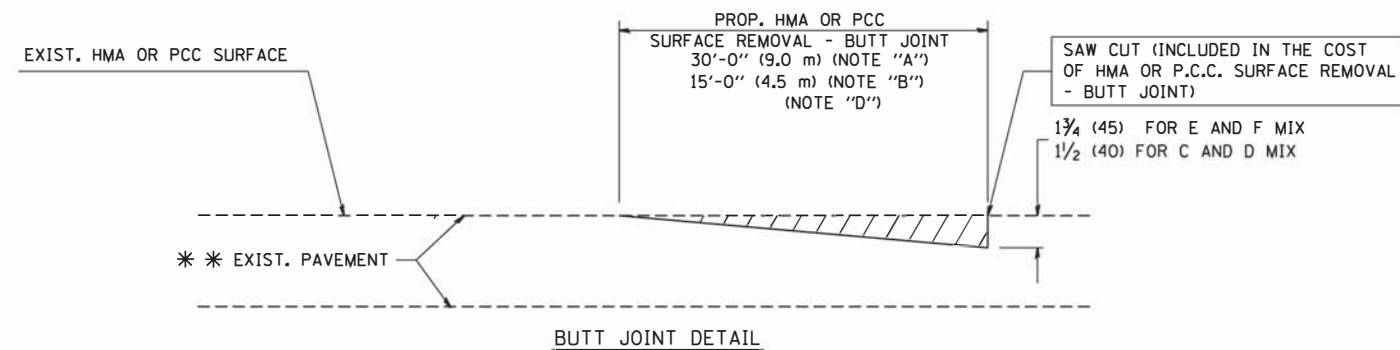


**OPTION 1**



**OPTION 2**

**TYPICAL TEMPORARY RAMP**



**TYPICAL BUTT JOINT AND HMA TAPER FOR RESURFACING ONLY**

\* \* PC CONCRETE, HMA OR HMA RESURFACED PAVEMENT.

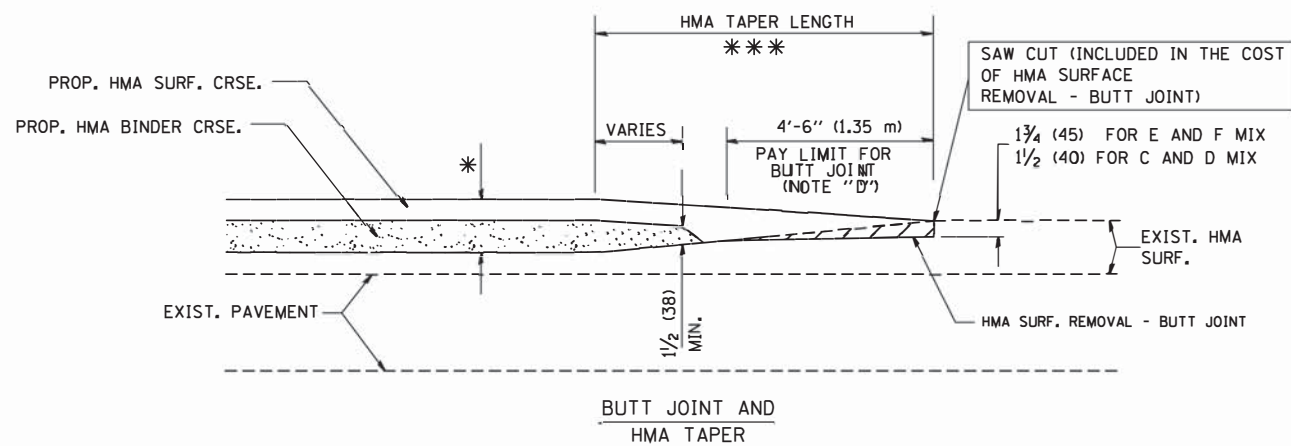
**NOTES**

- A: MAINLINE ROADWAYS AND MAJOR SIDE ROADS.
  - B: MINOR SIDE ROADS.
  - C: THE TEMP. RAMP SHALL BE CONSTRUCTED IMMEDIATELY UPON REMOVAL OF THE EXISTING HMA SURFACE.
  - D: THE BUTT JOINT SHALL BE CONSTRUCTED IMMEDIATELY PRIOR TO PLACING THE PROPOSED HMA COURSES.
  - E: TAPER THE TEMP. RAMP AT A RATE OF 3'-0" (900 mm) PER 1 INCH (25 mm) OF MILLING THICKNESS.
  - F: INSTALLATION AND REMOVAL OF THE 4'-6" (1.35 m) TEMP. RAMP IS INCLUDED IN COST OF HMA SURFACE REMOVAL - BUTT JOINT
  - G: SEE ARTICLE 406.08 AND 406.14 OF THE STANDARD SPECIFICATIONS FOR "HMA AND/OR PCC SURFACE REMOVAL, BUTT JOINT".
- \* SEE TYPICAL SECTIONS FOR MILLING THICKNESS.
- \* \* \* 20'-0" (6.1 m) PER 1 (25) RESURFACING (NOTE "A")  
10'-0" (3.0 m) PER 1 (25) RESURFACING (NOTE "B")

**BASIS OF PAYMENT:**

THE BUTT JOINT WILL BE PAID FOR AT THE CONTRACT UNIT PRICE PER SQUARE YARD (SQUARE METER) FOR "HOT-MIX ASPHALT SURFACE REMOVAL - BUTT JOINT" OR FOR "PORTLAND CEMENT CONCRETE SURFACE REMOVAL - BUTT JOINT".

ALL DIMENSIONS ARE IN INCHES (MILLIMETERS) UNLESS OTHERWISE SHOWN.



**TYPICAL BUTT JOINT AND HMA TAPER FOR MILLING AND RESURFACING**

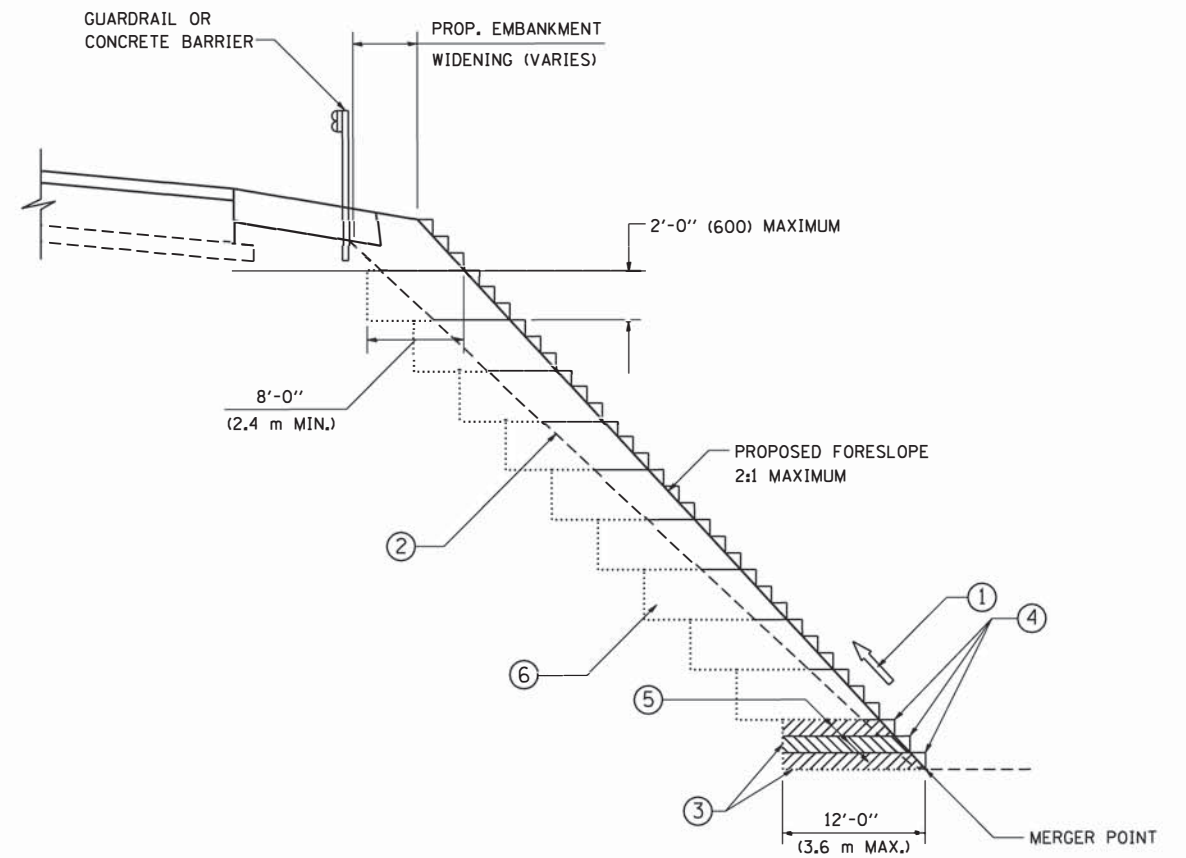
FILE NAME = W:\diststd\22x34\bd32.dgn	USER NAME = geglantob	DESIGNED - M. DE YONG	REVISED - R. SHAH 10-25-94
		DRAWN -	REVISED - A. ABBAS 03-21-97
	PLOT SCALE = 50.0000' / IN.	CHECKED -	REVISED - M. GOMEZ 04-06-01
	PLOT DATE = 1/4/2008	DATE - 06-13-90	REVISED - R. BORO 01-01-07

**STATE OF ILLINOIS  
DEPARTMENT OF TRANSPORTATION**

**BUTT JOINT AND  
HMA TAPER DETAILS**

SCALE: NONE SHEET NO. 1 OF 1 SHEETS STA. TO STA.

F.A.P. RTE. 330	SECTION 2015-038B	COUNTY WILL	TOTAL SHEETS 34	SHEET NO. 25
BD400-05 BD32			CONTRACT NO. 62A95	
FED. ROAD DIST. NO. 1 ILLINOIS FED. AID PROJECT				



TYPICAL BENCHING DETAIL  
FOR EMBANKMENT

**NOTES:**

- ① CONSTRUCT SUCCEEDING BENCH CUTS AND EMBANKMENT PLACEMENT AND COMPACTION FROM BOTTOM TO TOP IN STAIRSTEP FASHION.
- ② EXISTING FORESLOPE PREPARED IN ACCORDANCE WITH ARTICLE 205.03 OF THE STANDARD SPECIFICATIONS.
- ③ BENCH CUT EXISTING SLOPE TYPICAL FOR EACH STEP.
- ④ TRIM TO FINAL SLOPE.
- ⑤ EQUAL 8-INCH (200) LIFTS OF EMBANKMENT COMPACTED IN ACCORDANCE WITH ARTICLE 205.05 OF THE STANDARD SPECIFICATIONS.
- ⑥ EXCAVATION OF BENCH CUTS WITHIN EXISTING EMBANKMENT WILL BE PAID FOR AT THE CONTRACT UNIT PRICE PER CUBIC METER OR CUBIC YARD FOR "EARTH EXCAVATION". THIS PRICE WILL INCLUDE ALL LABOR AND MATERIAL, NO ADDITIONAL COMPENSATION WILL BE ALLOWED.
- ⑦ SLOPES SHALL BE BENCHED ACCORDING TO THIS DETAIL WHEN THE SLOPE IS STEEPER THAN 4:1 AND THE HEIGHT IS GREATER THAN 5' (1.5 m).

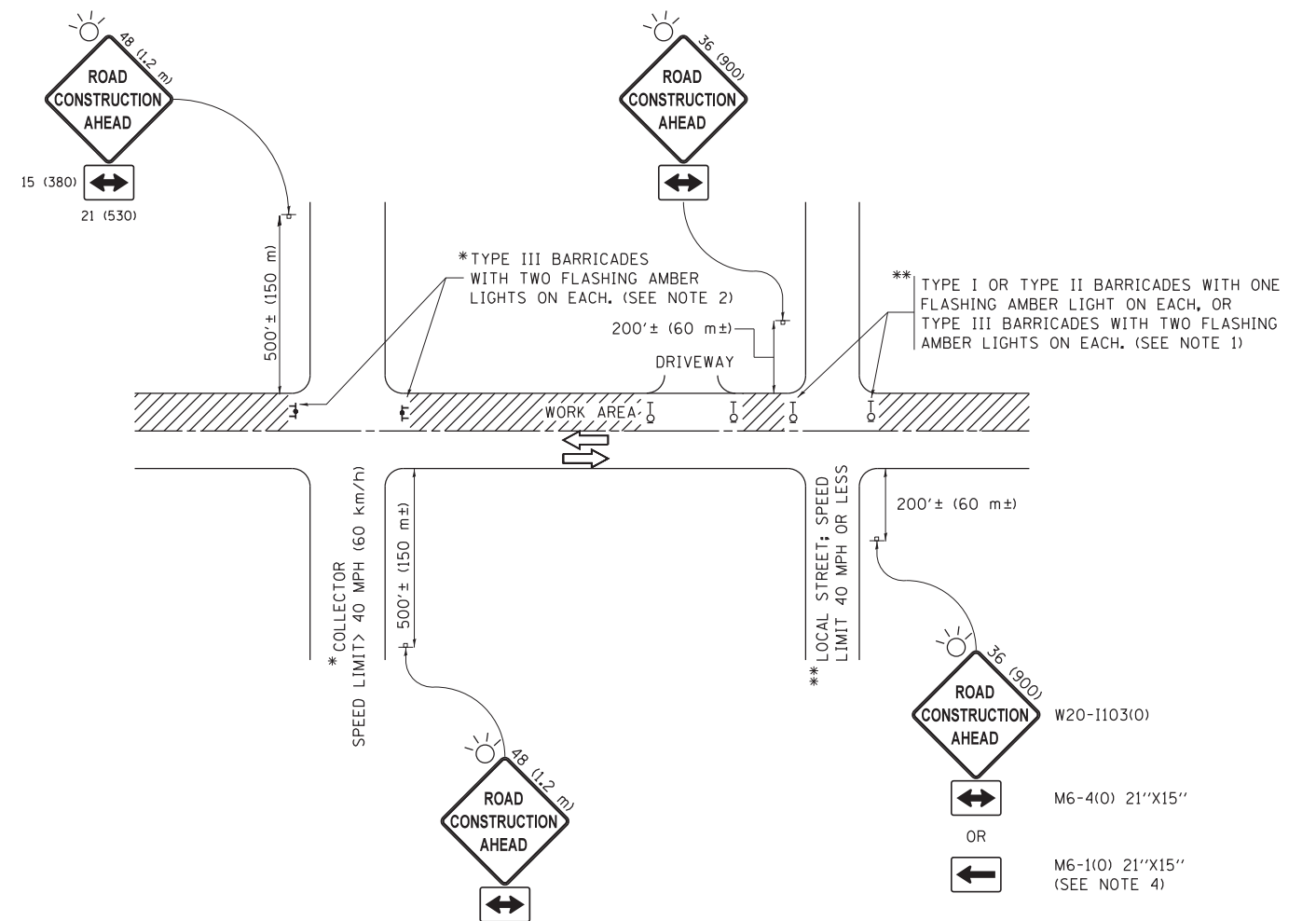
ALL DIMENSIONS ARE IN INCHES (MILLIMETERS)  
UNLESS OTHERWISE SHOWN.

FILE NAME = W:\diststd\22x34\bd51.dgn	USER NAME = geglianobt	DESIGNED - DRAWN - CADD	REVISED - REVISED -
PLOT SCALE = 50.0000' / IN.	CHECKED - S.E.B.	REVISED -	REVISED -
PLOT DATE = 1/4/2008	DATE = 06-16-04	REVISED -	REVISED -

**STATE OF ILLINOIS**  
**DEPARTMENT OF TRANSPORTATION**

<b>BENCHING DETAIL</b>			
<b>FOR EMBANKMENT WIDENING</b>			
SCALE: NONE	SHEET NO. 1 OF 1 SHEETS	STA.	TO STA.

F.A.P. RTE. 330	SECTION 2015-038B	COUNTY WILL	TOTAL SHEETS 34	SHEET NO. 26
<b>BD-51</b>		CONTRACT NO. 62A95		
FED. ROAD DIST. NO. 1 ILLINOIS FED. AID PROJECT				



**NOTES:**

1. SIDE ROAD WITH A SPEED LIMIT OF 40 MPH (60 km/h) OR LESS AS SHOWN ON THE DRAWING AND AS DIRECTED BY THE ENGINEER:
  - a) ONE "ROAD CONSTRUCTION AHEAD" SIGN 36 x 36 (900x900) WITH A FLASHER MOUNTED ON IT APPROXIMATELY 200' (60 m) IN ADVANCE OF THE MAIN ROUTE.
  - b) THE CLOSED PORTION OF THE MAIN ROUTE SHALL BE PROTECTED BY BLOCKING WITH TYPE I, TYPE II OR TYPE III BARRICADES, 1/3 OF THE CROSS SECTION OF THE CLOSED PORTION.
2. SIDE ROAD WITH A SPEED LIMIT GREATER THAN 40 MPH (60 km/h) AS SHOWN ON THE DRAWING AND AS DIRECTED BY THE ENGINEER:
  - a) ONE "ROAD CONSTRUCTION AHEAD" SIGN 48 x 48 (1.2 m x 1.2 m) WITH A FLASHER MOUNTED ON IT APPROXIMATELY 500' (150 m) IN ADVANCE OF THE MAIN ROUTE.
  - b) THE CLOSED PORTION OF THE MAIN ROUTE SHALL BE PROTECTED BY BLOCKING WITH TYPE III BARRICADES, 1/2 OF THE CROSS SECTION OF THE CLOSED PORTION.
3. CONES MAY BE SUBSTITUTED FOR BARRICADES OR DRUMS AT HALF THE SPACING DURING DAY OPERATIONS. CONES SHALL BE A MINIMUM OF 28 (710) IN HEIGHT.
4. WHEN THE SIDE ROAD LIES BETWEEN THE BEGINNING OF THE MAINLINE SIGNING AND THE WORK ZONE, A SINGLE HEADED ARROW (M6-1) SHALL BE USED IN LIEU OF THE DOUBLE HEADED ARROW (M6-4).
5. WHEN WORK IS BEING PERFORMED ON A SIDE ROAD OR DRIVEWAY, FOLLOW THE APPLICABLE STANDARD(S). THE DIRECTIONAL ARROW (M6-1 OR M6-4) SHALL BE COVERED OR REMOVED WHEN NO LONGER CONSISTENT WITH THE TRAFFIC CONTROL SET-UP.
6. ADVANCE WARNING SIGNS ARE TO BE OMITTED ON DRIVEWAYS UNLESS OTHERWISE SPECIFIED IN THE PLANS OR BY THE ENGINEER.
7. THE TRAFFIC CONTROL AND PROTECTION FOR SIDE ROADS, INTERSECTIONS, AND DRIVEWAYS SHALL BE INCLUDED IN THE COST OF SPECIFIED TRAFFIC CONTROL STANDARDS OR ITEMS.

All dimensions are in inches (millimeters) unless otherwise shown.

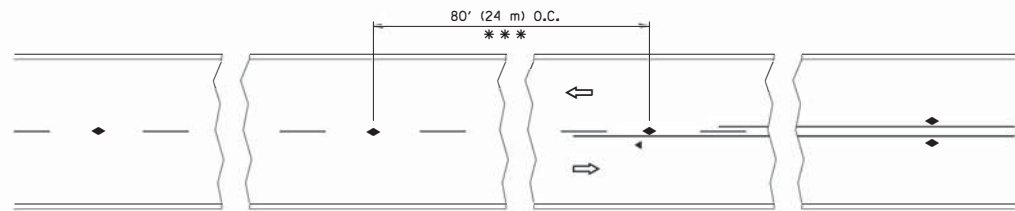
FILE NAME =	USER NAME = footemj	DESIGNED - L.H.A.	REVISED - A. HOUSEH 10-15-96
p:\11084EBIDINTEG\illinois.gov\PWIDOT\Documents\IDOT Offices\District 1\Projects\Dist 1\DRM\CADD\to\CAD\sheets\tc10.dgn			REVISED - T. RAMMACHER 01-06-00
Default	PLOT SCALE = 50.000' / in.	CHECKED -	REVISED - A. SCHUETZE 07-01-13
	PLOT DATE = 9/15/2016	DATE - 06-89	REVISED - A. SCHUETZE 09-15-16

**STATE OF ILLINOIS  
DEPARTMENT OF TRANSPORTATION**

**TRAFFIC CONTROL AND PROTECTION FOR  
SIDE ROADS, INTERSECTIONS, AND DRIVEWAYS**

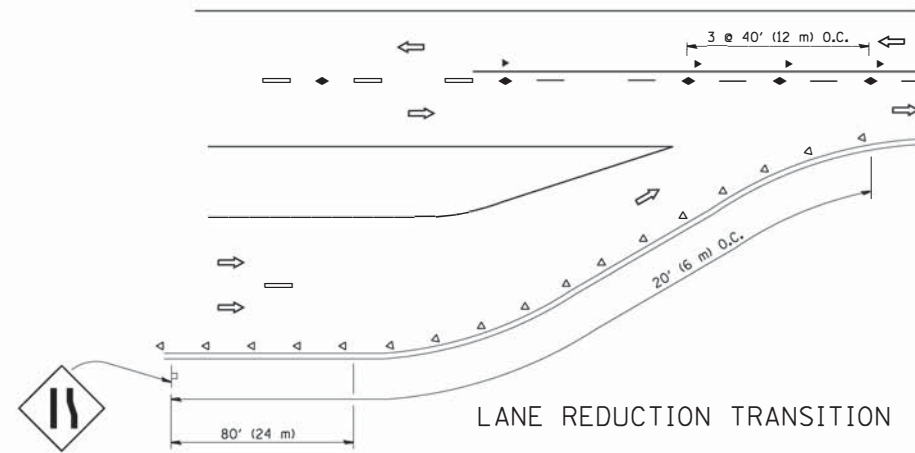
SCALE: NONE SHEET 1 OF 1 SHEETS STA. TO STA.

F.A.P. RTE.	SECTION	COUNTY	TOTAL SHEETS	SHEET NO.
330	2015-038B	WILL	34	27
TC-10		CONTRACT NO. 62A95		
ILLINOIS FED. AID PROJECT				

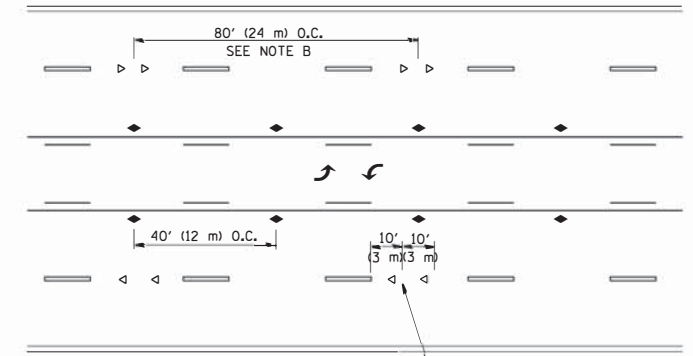


\*\*\* REDUCE TO 40' (12 m) O.C. ON CURVES WITH POSTED OR ADVISORY SPEED 45 M.P.H. (70 km/h) OR LESS.

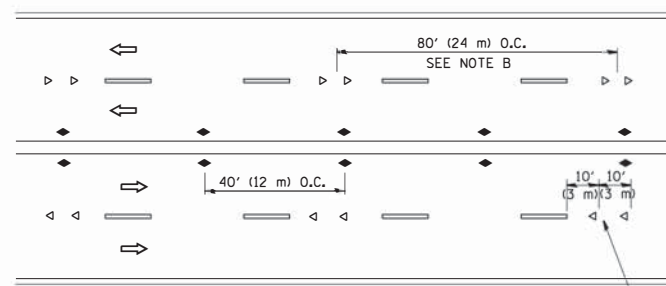
TWO-LANE/TWO-WAY



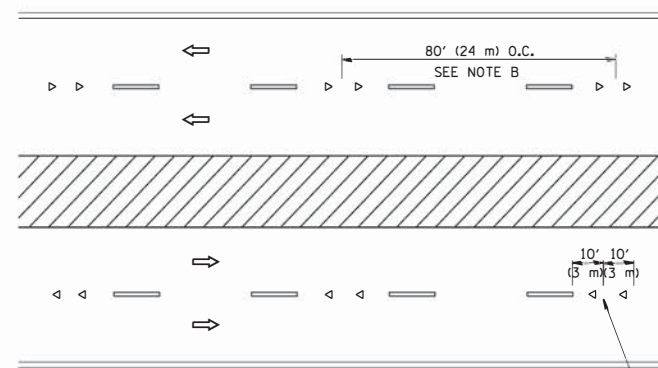
LANE REDUCTION TRANSITION



TWO-WAY LEFT TURN



MULTI-LANE/UNDIVIDED



MULTI-LANE/DIVIDED

GENERAL NOTES

1. MARKERS USED WITH DASHED LINES SHALL BE CENTERED IN THE GAP BETWEEN SEGMENTS.
2. MARKERS USED ADJACENT TO SOLID LINES SHALL BE OFFSET 2 TO 3 (50 TO 75) TOWARD TRAFFIC AS SHOWN.
3. MARKERS THROUGH TANGENTS LESS THAN 500' (150 m) IN LENGTH BETWEEN CURVES SHALL BE INSTALLED AT THE LESSER OF THE TWO CURVE SPACINGS.

SYMBOLS

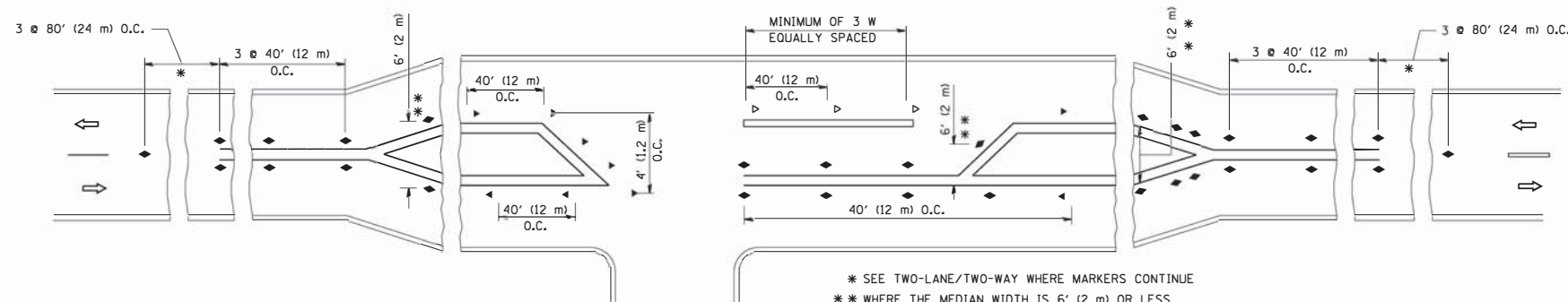
- YELLOW STRIPE
- WHITE STRIPE
- ◀ ONE-WAY AMBER MARKER
- ◁ ONE-WAY CRYSTAL MARKER (W/O)
- ◆ TWO-WAY AMBER MARKER

LANE MARKER NOTES

- A. USE DOUBLE LANE LINE MARKERS SPACED AS SHOWN.
- B. REDUCE TO 40' (12 m) O.C. ON CURVES WHERE ADVISORY SPEEDS ARE 10 M.P.H (20 km/h) LOWER THAN POSTED SPEEDS.

DESIGN NOTES

1. DOUBLE LANE LINE MARKERS SHALL BE USED UNLESS SPECIFIED OTHERWISE.
2. EXCEPT AS SHOWN ON THE LANE REDUCTION TRANSITION AND FREEWAY EXIT RAMP DETAIL, MARKERS ARE NOT TO BE SPECIFIED ON RIGHT EDGE LINES.
3. THE EXACT MARKER LIMITS, SPACING, AND COLOR SHALL BE INCLUDED IN THE PLANS WHEN STANDARD SPECIFICATIONS ARE NOT BEING USED.
4. MARKERS SHOULD NOT BE USED ALONGSIDE CURBS EXCEPT FOR EXTREMELY SHORT SECTIONS OF CURBS WHERE NOT MORE THAN TWO MARKERS WOULD BE INVOLVED.



LEFT TURN

\* SEE TWO-LANE/TWO-WAY WHERE MARKERS CONTINUE  
 \*\* WHERE THE MEDIAN WIDTH IS 6' (2 m) OR LESS USE TWO-WAY MARKERS.

All dimensions are in inches (millimeters) unless otherwise shown.

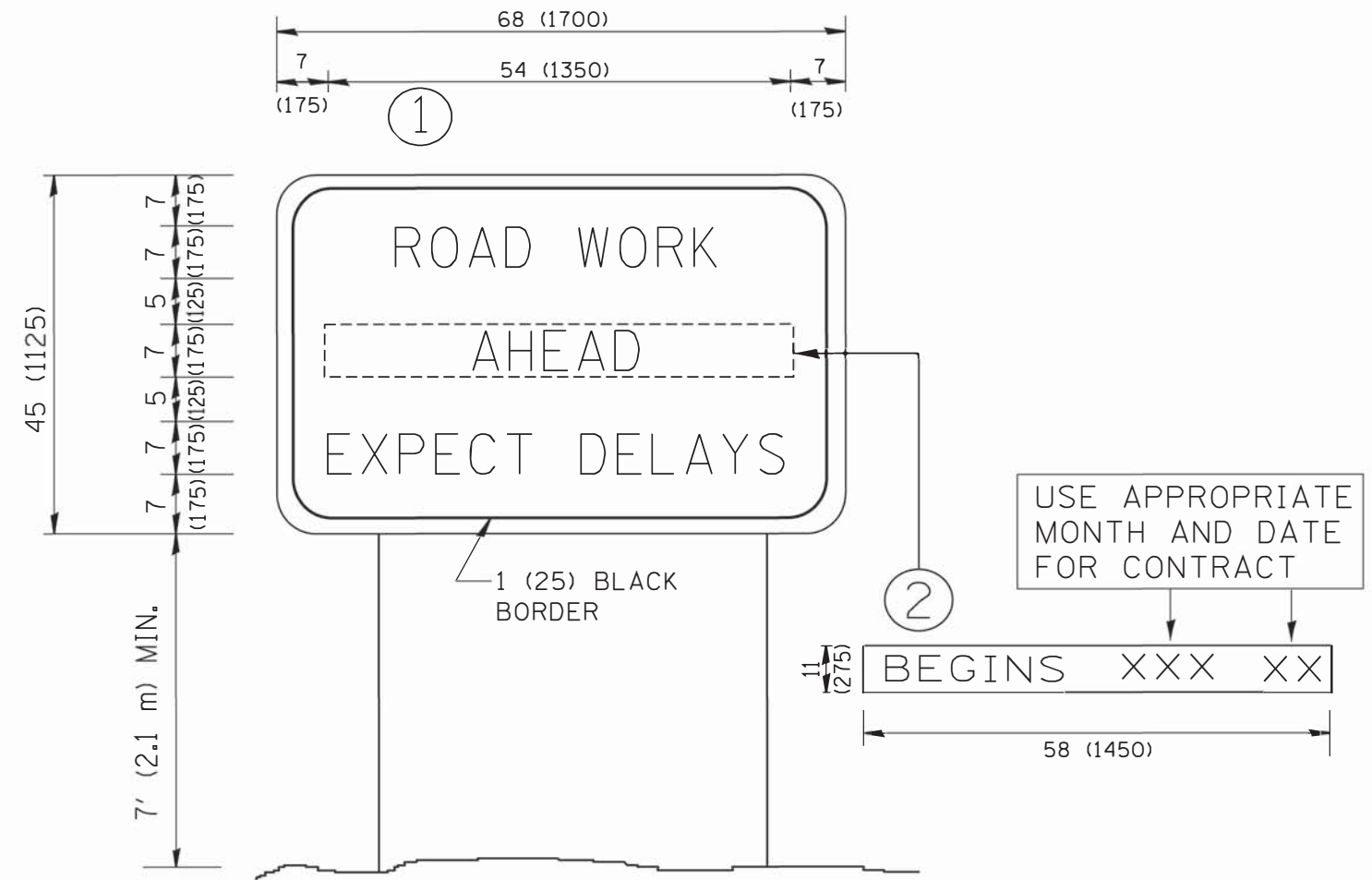
FILE NAME =	USER NAME = lrysa	DESIGNED -	REVISED - T. RAMMACHER 09-19-94
ct:\pw_work\pw\dot\lrysa\d0108315\to11.dgn		DRAWN -	REVISED - T. RAMMACHER 03-12-99
	PLOT SCALE = 50.000' / IN.	CHECKED -	REVISED - T. RAMMACHER 01-06-00
	PLOT DATE = 3/2/2011	DATE -	REVISED - C. JUCIUS 09-09-09

STATE OF ILLINOIS  
 DEPARTMENT OF TRANSPORTATION

TYPICAL APPLICATIONS			
RAISED REFLECTIVE PAVEMENT MARKERS (SNOW-PLOW RESISTANT)			
SCALE: NONE	SHEET NO. 1 OF 1 SHEETS	STA.	TO STA.

F.A.P. RTE.	SECTION	COUNTY	TOTAL SHEETS	SHEET NO.
330	2015-038B	WILL	34	28
TC-11		CONTRACT NO. 62A95		
FED. ROAD DIST. NO. 1 ILLINOIS FED. AID PROJECT				





**NOTES:**

1. USE BLACK LETTERING ON ORANGE BACKGROUND.
2. ERECT SIGNS IN ADVANCE OF THE LOCATION FOR THE "ROAD CONSTRUCTION AHEAD" SIGN AT LOCATIONS AS DIRECTED BY THE ENGINEER.
3. ERECT SIGN ① WITH INSTALLED PANEL ② ONE WEEK PRIOR TO THE START OF CONSTRUCTION.
4. REMOVE PANEL ② SOON AFTER THE START OF CONSTRUCTION.
5. SEE SPECIAL PROVISION FOR "TEMPORARY INFORMATION SIGNING" FOR ADDITIONAL INFORMATION.
6. ONE SIGN ASSEMBLY EQUALS 25.70 SQ. FT. (2.3 SQ. M.)
7. SHALL BE PAID FOR AS TEMPORARY INFORMATION SIGNING.

ALL DIMENSIONS ARE IN INCHES (MILLIMETERS) UNLESS OTHERWISE SHOWN.

FILE NAME = W:\diststd\22x34\to22.dgn	USER NAME = geglianobt	DESIGNED -	REVISED - R. MIRS 09-15-97	<b>STATE OF ILLINOIS DEPARTMENT OF TRANSPORTATION</b>	<b>ARTERIAL ROAD INFORMATION SIGN</b>		F.A.P. RTE. 330	SECTION 2015-038B	COUNTY WILL	TOTAL SHEETS 34	SHEET NO. 30
	PLOT SCALE = 50.000' / IN.	DRAWN -	REVISED - R. MIRS 12-11-97		SCALE: NONE	SHEET NO. 1 OF 1 SHEETS	STA.	TO STA.	<b>TC-22</b>		CONTRACT NO. 62A95
	PLOT DATE = 1/4/2008	CHECKED -	REVISED - T. RAMMACHER 02-02-99		FED. ROAD DIST. NO. 1 ILLINOIS FED. AID PROJECT						
		DATE -	REVISED - C. JUCIUS 01-31-07								



BY: \_\_\_\_\_ DATE: \_\_\_\_\_  
 SURVEYED PLOTTED  
 NOTE BOOK TEMPLATE  
 AREAS CHECKED

ORIGINAL SURVEY PLOTTED  
 NOTE BOOK TEMPLATE  
 AREAS CHECKED

FILE NAME: D:\2015\15-038B\15-038B.dgn  
 \$SYSPRINTER.NAME\$

**CHASTAIN & ASSOCIATES LLC**  
 CONSULTING ENGINEERS  
 184-001397

USER NAME: jpong  
 DESIGNED: JKP  
 DRAWN: JKP  
 CHECKED: SRK  
 DATE: 12/13/2017

REVISED: -  
 REVISED: -  
 REVISED: -  
 REVISED: -

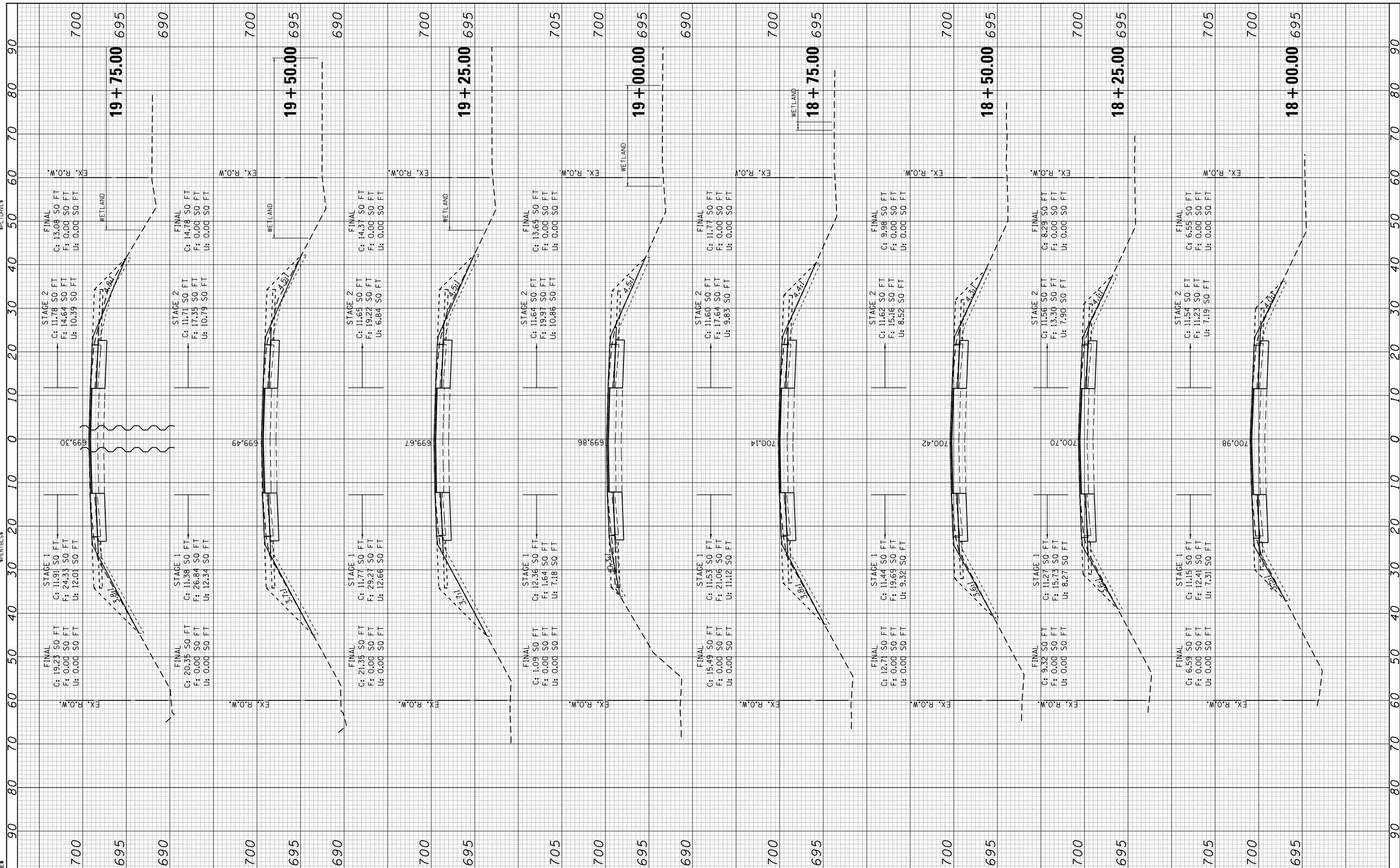
**STATE OF ILLINOIS**  
**DEPARTMENT OF TRANSPORTATION**

**U.S. ROUTE 45 U.S. ROUTE 52 OVER UNNAMED DITCH**  
**CROSS SECTIONS**

SCALE: 1:10H/1:5V SHEET 2 OF 4 SHEETS STA. 18+50.00 TO STA. 20+00.00

F.A.P. R.T.E. 330	SECTION 2015-038B	COUNTY WILL	TOTAL SHEETS 34	SHEET NO. 32
CONTRACT NO. 62A95				

ILLINOIS FED. AID PROJECT

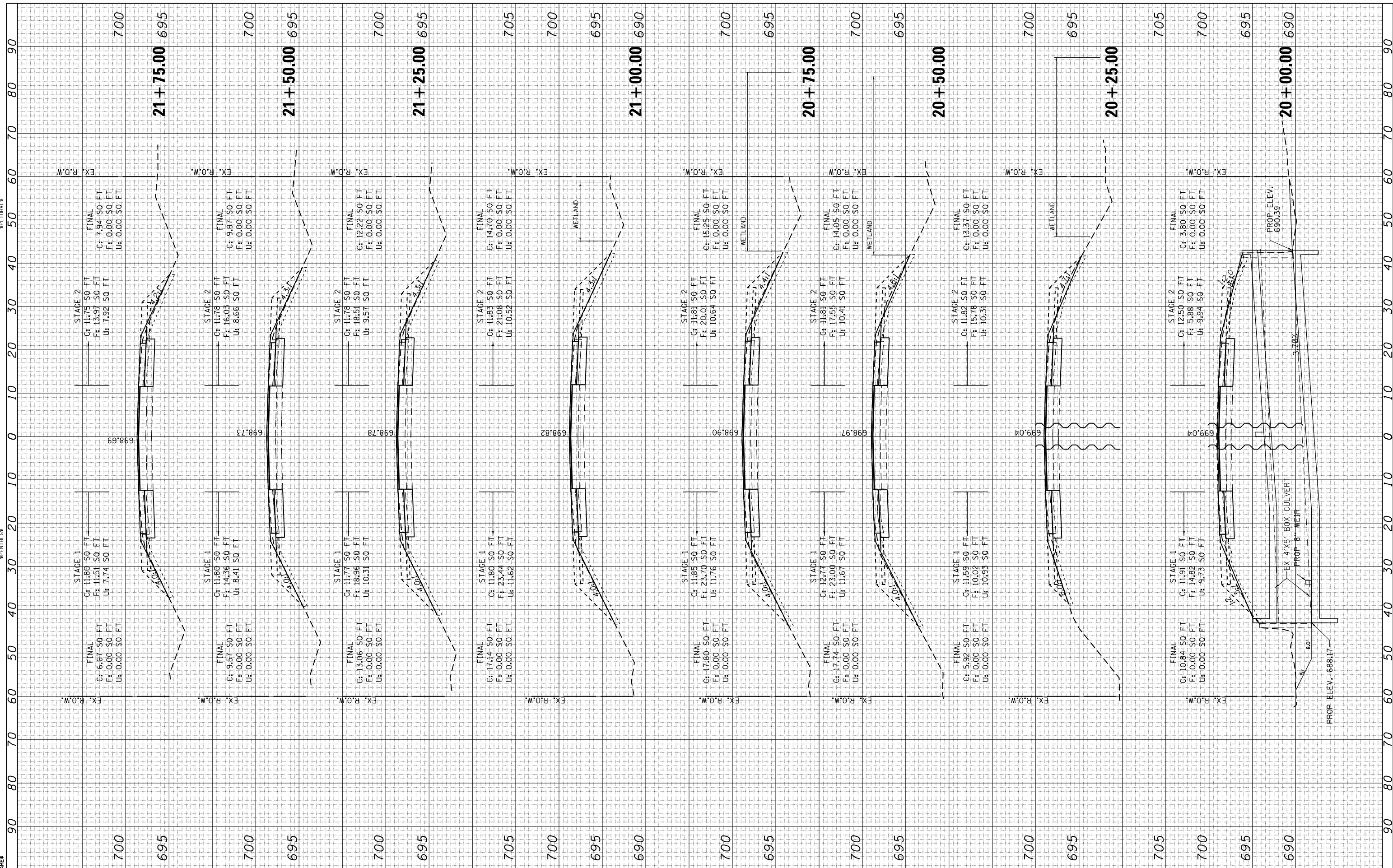




FINAL SURVEY NO.	SURVEYED PLOTTED TEMPLATE AREAS CHECKED	BY	DATE

ORIGINAL SURVEY NO.	SURVEYED PLOTTED TEMPLATE AREAS CHECKED	BY	DATE

FILE NAME = D:\2015\15-038B\15-038B.dgn  
 \$SYSPRINTER.NAME\$



**CHASTAIN & ASSOCIATES LLC**  
 CONSULTING ENGINEERS  
 184-001397

USER NAME = jpong	DESIGNED - JKP	REVISED -
PLOT SCALE = 20.0000' / in.	DRAWN - JKP	REVISED -
PLOT DATE = 12/13/2017	CHECKED - SRK	REVISED -
	DATE - 12/13/2017	REVISED -

**STATE OF ILLINOIS**  
**DEPARTMENT OF TRANSPORTATION**

**U.S. ROUTE 45/U.S. ROUTE 52 OVER UNNAMED DITCH**  
**CROSS SECTIONS**

SCALE: 1:10H/15V SHEET 3 OF 4 SHEETS STA. 20+25.00 TO STA. 22+00.00

F.A.P. R.T.E. 330	SECTION 2015-038B	COUNTY WILL	TOTAL SHEETS 34	SHEET NO. 33
CONTRACT NO. 62A95				
ILLINOIS FED. AID PROJECT				

