

03-09-2018 LETTING ITEM 017

STATE OF ILLINOIS
DEPARTMENT OF TRANSPORTATION

F.A. RTE.	SECTION	COUNTY	TOTAL SHEETS	SHEET NO.
VAR.	2017-056BP	WILL	25	1
		ILLINOIS	CONTRACT NO. 62F93	

D-91-226-18

FOR INDEX OF SHEETS, SEE SHEET NO. 2

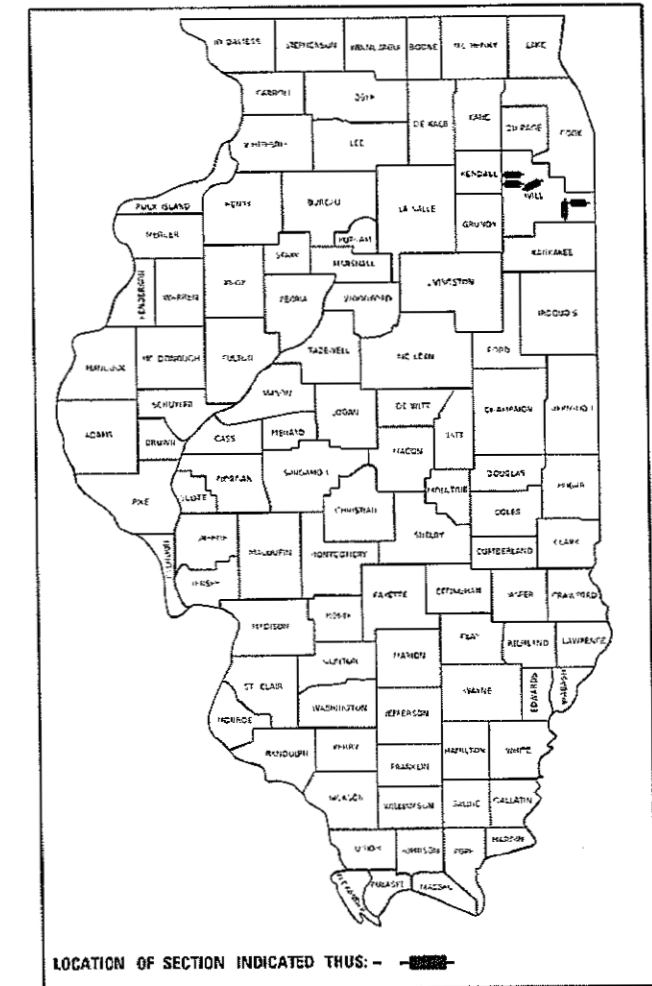
IMPROVEMENTS ARE LOCATED IN THE VILLAGES OF MONEE,
PEOTONE AND THE CITY OF JOLIET

PROPOSED HIGHWAY PLANS

VARIOUS ROUTES
VARIOUS LOCATIONS
SECTION: 2017-056BP
PROJECT: NHPP-STP-CDFR(332)
BRIDGE PAINTING
WILL COUNTY

C-91-087-18

SEE LOCATIONS MAPS
SHEET 4



J.U.L.I.E.
JOINT UTILITY LOCATION INFORMATION FOR EXCAVATION
1-800-892-0123
OR 811

PROJECT ENGINEER: J. ALAIN MIDY (847) 221-3056
PROJECT MANAGER: FAWAD AQUEEL (847) 705-4247

CONTRACT NO. 62F93

STATE OF ILLINOIS
DEPARTMENT OF TRANSPORTATION

SUBMITTED DECEMBER 8 20 17

Anthony J. Quigley / AS
REGIONAL ENGINEER

Feb 2 20 18
ENGINEER OF DESIGN AND ENVIRONMENT

David L. Ch...
DIRECTOR OF PROGRAM DEVELOPMENT 2

PRINTED BY THE AUTHORITY
OF THE STATE OF ILLINOIS

INDEX OF SHEETS

1. TITLE SHEET
2. INDEX OF SHEETS, STATE STANDARDS, GENERAL NOTES AND GENERAL PAINT NOTES
3. SUMMARY OF QUANTITIES
4. LOCATION MAPS
- 5-6. LOCATION 1 (SN 099-0202)
- 7-8. LOCATION 2 (SN 099-0204)
- 9-12. LOCATION 3 (SN 099-0209)
- 13-15. LOCATION 4 (SN 099-0210)
- 16-20. LOCATION 5 (SN 099-0282)
21. ENTRANCE AND EXIT RAMP CLOSURE DETAILS (TC-08)
22. TRAFFIC CONTROL DETAILS FOR FREEWAY SINGLE LANE AND MULTI-LANE WEAVE (TC-09)
23. TRAFFIC CONTROL AND PROTECTION FOR SIDE ROADS, INTERSECTIONS, AND DRIVEWAYS (TC-10)
24. TRAFFIC CONTROL FOR FREEWAY SHOULDER CLOSURES AND PARTIAL RAMP CLOSURES (TC-17)
25. ARTERIAL ROAD INFORMATION SIGN (TC-22)

STATE STANDARDS

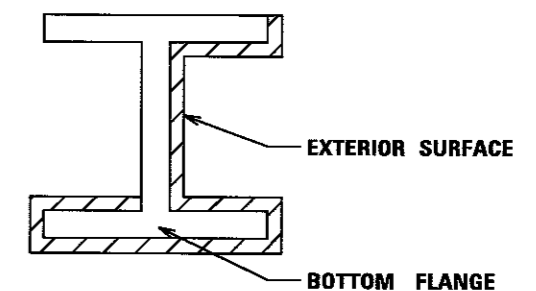
STANDARD NO.	DESCRIPTION
701006-05	OFF-ROAD OPERATIONS, 2L, 2W, 15' TO 24" FROM PAVEMENT EDGE
701011-04	OFF-ROAD MOVING OPERATIONS, 2L, 2W, DAY ONLY
701101-05	OFF-ROAD OPERATIONS, MULTILANE, 15' TO 24" FROM PAVEMENT EDGE
701106-02	OFF-ROAD OPERATIONS, MULTILANE, MORE THAN 15' AWAY
701301-04	LANE CLOSURE, 2L, 2W, SHORT TIME OPERATIONS
701311-03	LANE CLOSURE, 2L, 2W, MOVING OPERATIONS- DAY ONLY
701400-09	APPROACH TO LANE CLOSURE, FREEWAY/EXPRESSWAY
701401-11	LANE CLOSURE, FREEWAY/EXPRESSWAY
701411-09	LANE CLOSURE, MULTILANE, AT ENTRANCE OR EXIT RAMP, FOR SPEEDS ≥ 45 MPH
701428-01	TRAFFIC CONTROL, SETUP AND REMOVAL, FREEWAY/EXPRESSWAY
701446-09	TWO LANE CLOSURE, FREEWAY/EXPRESSWAY
701501-06	URBAN LANE CLOSURE, 2L, 2W, UNDIVIDED
701801-06	SIDEWALK, CORNER OR CROSSWALK CLOSURE
701901-07	TRAFFIC CONTROL DEVICES

GENERAL NOTES

1. BEFORE STARTING ANY EXCAVATION, THE CONTRACTOR SHALL CALL "J.U.L.I.E." (800) 892-0123 OR 811 FOR FIELD LOCATIONS OF BURIED ELECTRIC, TELEPHONE AND GAS UTILITIES. (48 HOUR NOTIFICATION IS REQUIRED).
2. THE CONTRACTOR SHALL COORDINATE CONSTRUCTION ACTIVITIES WITH UTILITY COMPANIES, THE VILLAGES OF MONEE, PEOTONE AND THE CITY OF JOLIET.
3. IT SHALL BE THE CONTRACTOR'S RESPONSIBILITY TO PROTECT AND PRESERVE THE EXISTING BRIDGE LIGHTING AT ANY LOCATIONS THAT LIGHTING IS ENCOUNTERED ADJACENT TO AN AREA TO BE CLEANED AND PAINTED.
4. IT SHALL BE THE CONTRACTOR'S RESPONSIBILITY TO VERIFY ALL THE DIMENSIONS & CONDITIONS EXISTING IN THE FIELD PRIOR TO CONSTRUCTION & ORDERING OF MATERIALS.
5. THE CONTRACTOR WILL NOT BE ALLOWED TO SET UP A YARD OR FIELD OFFICE ON STATE PROPERTY WITHOUT WRITTEN PERMISSION FROM THE DEPARTMENT.
6. THESE PLANS HAVE BEEN PREPARED FROM NOTES RECEIVED FROM THE BUREAU OF MAINTENANCE BRIDGE INSPECTORS.
7. THE CONTRACTOR SHALL CONTACT THE DISTRICT ONE TRAFFIC CONTROL SUPERVISOR AT (847) 705-4470 FOR ARTERIALS AND (847) 705-4151 FOR EXPRESSWAYS A MINIMUM OF 72 HOURS IN ADVANCE OF BEGINNING WORK.
8. THE CONTRACTOR SHALL BE REQUIRED TO PROVIDE ACCESS TO ABUTTING PROPERTY AT ALL TIMES DURING THE CONSTRUCTION OF THIS PROJECT.
9. THE "ARTERIAL ROAD INFORMATION SIGN (TC-22)" IS APPLICABLE ONLY TO ARTERIAL ROADS AND SHALL NOT BE APPLIED TO EXPRESSWAYS.
10. PLAN DIMENSIONS AND DETAILS RELATIVE TO EXISTING PLANS ARE SUBJECT TO NOMINAL CONSTRUCTION VARIATIONS. THE CONTRACTOR SHALL FIELD VERIFY EXISTING DIMENSIONS AND DETAILS AFFECTING NEW CONSTRUCTION AND MAKE NECESSARY APPROVED ADJUSTMENTS PRIOR TO CONSTRUCTION OR ORDERING OF MATERIALS. SUCH VARIATIONS SHALL NOT BE CAUSE FOR ADDITIONAL COMPENSATION FOR A CHANGE IN SCOPE OF THE WORK, HOWEVER, THE CONTRACTOR WILL BE PAID FOR THE QUANTITY ACTUALLY FURNISHED BASED AT THE UNIT PRICE BID FOR THE WORK.
11. DO NOT SCALE PLANS FOR CONSTRUCTION DIMENSIONS.
12. THE CONTRACTOR SHALL REQUEST AND GAIN APPROVAL FROM THE ILLINOIS DEPARTMENT OF TRANSPORTATION'S EXPRESSWAY TRAFFIC OPERATIONS ENGINEER AT (847-705-4151 OR 4155) OR [WWW.IDOTILCS.COM](http://www.idotilcs.com) AT LEAST (24) HOURS IN ADVANCE OF ALL DAILY LANE, AND RAMP AND SHOULDER CLOSURES.
13. AT LOCATION 5, THE CONTRACTOR SHALL NOT BE ALLOWED TO CROSS ANY RAILROAD TRACKS UNDER THE BRIDGE REFER TO ARTICLE 107.10 OF THE STANDARD SPECIFICATIONS.

GENERAL NOTES FOR PAINT

1. CLEANING AND PAINTING OF THE EXISTING STRUCTURAL STEEL SHALL BE AS SPECIFIED IN THE SPECIAL PROVISION FOR "CLEANING AND PAINTING EXISTING STEEL STRUCTURES".
2. THE AREAS DESIGNATED SHALL BE CLEANED PER NEAR WHITE BLAST CLEANING - SSPC-SP10. THE AREAS DESIGNATED SHALL BE PAINTED ACCORDING TO THE REQUIREMENTS OF PAINT SYSTEM 1 -0Z/E/U. THE COLOR OF THE FINAL FINISH COAT FOR ALL INTERIOR STEEL SURFACES SHALL BE GRAY, MUNSELL NO 5B 7/1. THE COLOR OF THE FINAL FINISH COAT FOR EXTERIOR AND BOTTOM FLANGE OF THE FASCIA BEAMS SHALL BE REDDISH BROWN, MUNSELL NO 2.5YR 3/4.
3. A MINIMUM OF TWO (2) AIR MONITORS AT LOCATION 5 AND ONE (1) AT EACH OTHER LOCATIONS WILL BE REQUIRED TO MONITOR ABRASIVE BLASTING OPERATIONS. SEE SPECIAL PROVISIONS FOR "CONTAINMENT AND DISPOSAL OF LEAD PAINT CLEANING RESIDUES" AND "CONTAINMENT AND DISPOSAL OF NON-LEAD PAINT CLEANING RESIDUES".
4. ALL ITEMS (SUCH AS, BUT NOT LIMITED TO: CONDUITS, BRACKETS AND DECK DRAINS) ATTACHED TO OUTSIDE OF THE FASCIA BEAMS SHOULD BE CLEANED AND PAINTED.
5. LOCATION 1 (SN 099-0202), 2 (SN 099-0204), 3 (SN 099-0209) AND 4 (SN 099-0210): ALL BEAMS, BEARINGS AND OTHER STRUCTURAL STEEL WITHIN 5 FEET (MEASURED ALONG THE BEAM) OF EITHER SIDE OF ALL DECK JOINTS, SHALL BE CLEANED PER NEAR WHITE BLAST CLEANING SSPC-SP10. THE EXTERIOR SURFACES AND TOP AND BOTTOM OF THE BOTTOM FLANGE OF THE FASCIA BEAMS (SEE FIGURE 1) SHALL BE CLEANED PER NEAR WHITE BLAST CLEANING SSPC-SP10.
6. LOCATION 5 (SN 099-0282): ALL BEAMS, BEARINGS AND OTHER STRUCTURAL STEEL WITHIN 10 FEET (MEASURED ALONG THE BEAM) OF EITHER SIDE OF ALL DECK JOINTS, SHALL BE CLEANED PER NEAR WHITE BLAST CLEANING SSPC-SP10.



FASCIA BEAM PAINTING DETAIL

FIGURE 1

 SURFACE TO BE CLEANED AND PAINTED

FILE NAME =	USER NAME = dnoia	DESIGNED -	REVISED -	STATE OF ILLINOIS DEPARTMENT OF TRANSPORTATION	INDEX OF SHEETS, STATE STANDARDS, GENERAL NOTES AND GENERAL PAINT NOTES		F.A. RTE.	SECTION	COUNTY	TOTAL SHEETS	SHEET NO.
Default	PL0T SCALE = 100.0000' / 1" =	CHECKED -	REVISED -				VAR.	2017-0568P	WILL	25	2
	PL0T DATE = 12/11/2017	DATE -	REVISED -		SCALE:	SHEET 1 OF 1 SHEETS	STA.	TO STA.	ILLINOIS FED. AID PROJECT		
							CONTRACT NO. 62F93				

URBAN

URBAN

SUMMARY OF QUANTITIES			CONSTRUCTION TYPE CODE					
CODE NO	ITEM	UNIT	TOTAL QUANTITIES	0047 BRIDGE 1	0047 BRIDGE 2	0047 BRIDGE 3	0047 BRIDGE 4	0047 BRIDGE 5
				099-0202 90% NHPP 10% STATE	099-0204 90% NHPP 10% STATE	099-0209 90% NHPP 10% STATE	099-0210 90% NHPP 10% STATE	099-0282 80% STP 20% STATE
67000400	ENGINEER'S FIELD OFFICE, TYPE A	CAL MO	10	2	2	2	2	2
67100100	MOBILIZATION	L SUM	1	0.2	0.2	0.2	0.2	0.2
70102620	TRAFFIC CONTROL AND PROTECTION, STANDARD 701501	L SUM	1					1
70102640	TRAFFIC CONTROL AND PROTECTION, STANDARD 701801	L SUM	1					1
X7011015	TRAFFIC CONTROL AND PROTECTION (EXPRESSWAYS)	L SUM	1	0.25	0.25	0.25	0.25	
Z0007112	CONTAINMENT AND DISPOSAL OF LEAD PAINT CLEANING RESIDUES	L SUM	1	0.33	0.33	0.34		
Z0007114	CONTAINMENT AND DISPOSAL OF NON-LEAD PAINT CLEANING RESIDUES	L SUM	1				0.5	0.5
Z0010501	CLEANING AND PAINTING STEEL BRIDGE NO. 1	L SUM	1	1				
Z0010502	CLEANING AND PAINTING STEEL BRIDGE NO. 2	L SUM	1		1			
Z0010503	CLEANING AND PAINTING STEEL BRIDGE NO. 3	L SUM	1			1		
Z0010504	CLEANING AND PAINTING STEEL BRIDGE NO. 4	L SUM	1				1	
Z0010505	CLEANING AND PAINTING STEEL BRIDGE NO. 5	L SUM	1					1
Z0030850	TEMPORARY INFORMATION SIGNING	SO FT	51.4					51.4

SUMMARY OF QUANTITIES			CONSTRUCTION TYPE CODE					
CODE NO	ITEM	UNIT	TOTAL QUANTITIES	0047 BRIDGE 1	0047 BRIDGE 2	0047 BRIDGE 3	0047 BRIDGE 4	0047 BRIDGE 5
				099-0202 90% NHPP 10% STATE	099-0204 90% NHPP 10% STATE	099-0209 90% NHPP 10% STATE	099-0210 90% NHPP 10% STATE	099-0282 80% STP 20% STATE
Z0048665	RAILROAD PROTECTIVE LIABILITY INSURANCE	L SUM	1					
Z0076600	TRAINEES	HR	500	500				
Z0076604	TRAINEES - TRAINING PROGRAM GRADUATE	HR	500	500				

0042

FILE NAME =	USER NAME = dfa2ia	DESIGNED -	REVISED -
path: \\VLD04E\BID\INT\ES\Illinois\gov\PI\DOT\Documents\1007	Offices\District 1\Projects\DI22618\CADD\Info\Design\DI22618	DR/AMM/gm	
PLOT SCALE = 100,0000' / 1in.	CHECKED -	REVISED -	
PLOT DATE = 12/11/2017	DATE -	REVISED -	

**STATE OF ILLINOIS
DEPARTMENT OF TRANSPORTATION**

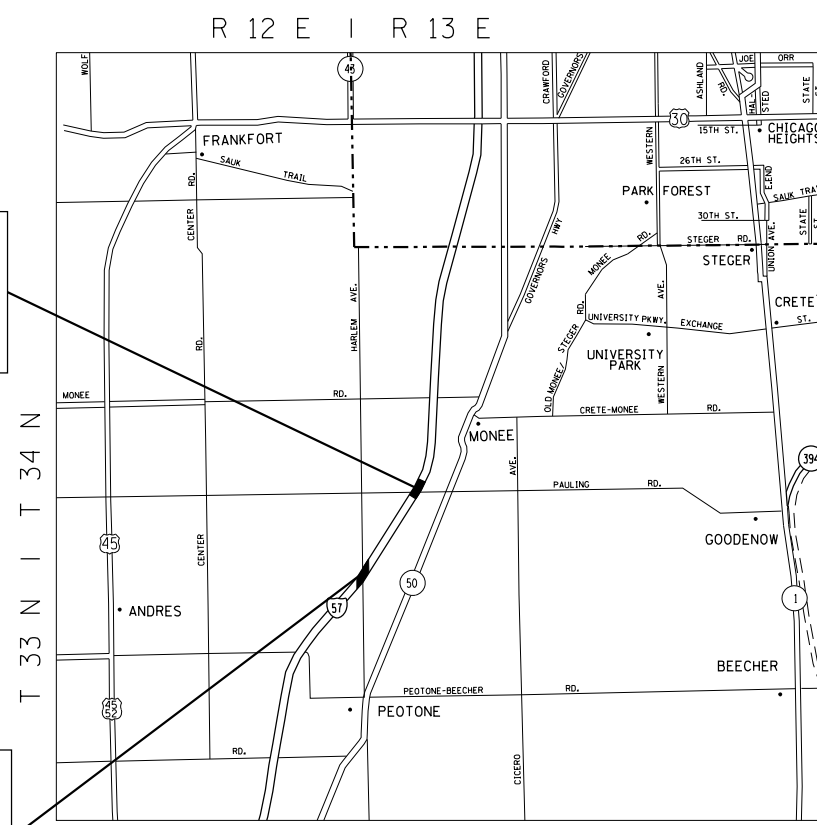
SUMMARY OF QUANTITIES	
SCALE:	SHEET NO. 1 OF 1 SHEETS STA. TO STA.

F.A. RTE.	SECTION	COUNTY	TOTAL SHEETS	SHEET NO.
VAR.	2017-056BP	WILL	25	3
FED. ROAD DIST. NO. 1 ILLINOIS FED. AID PROJECT			CONTRACT NO. 62F93	

REV

**IMPROVEMENT LOCATION 2:
I-57 AT PAULING RD.
VILLAGE OF MONEE
SN: 099-0204**

**IMPROVEMENT LOCATION 1:
I-57 AT HARLEM AVE.
VILLAGE OF PEOTONE
SN: 099-0202**



PEOTONE AND MONEE TOWNSHIPS

TRAFFIC DATA:

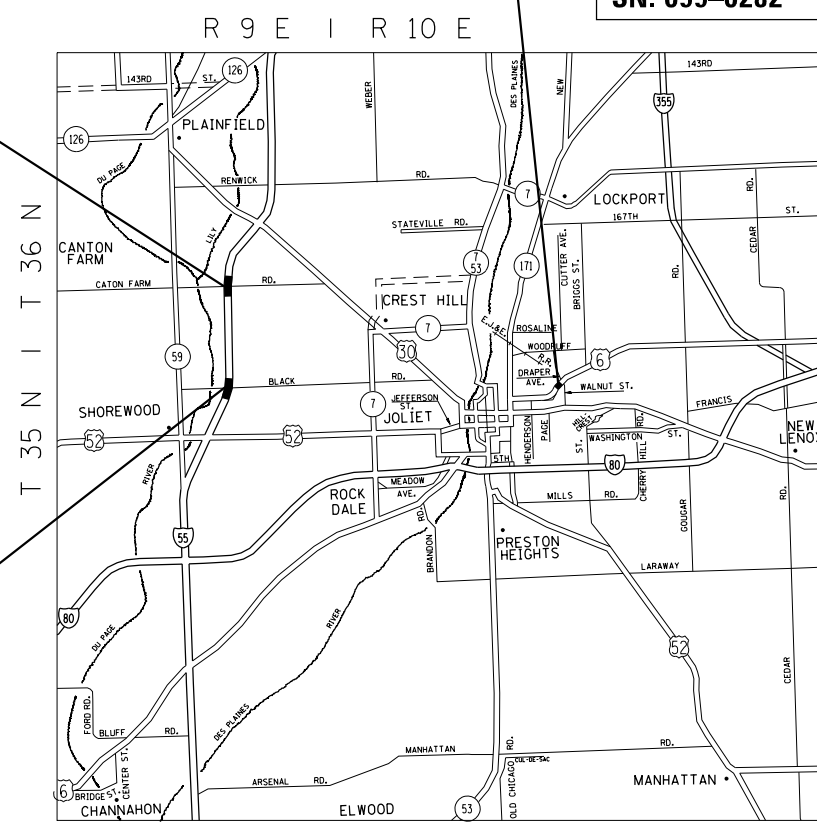
I-57
2015 ADT = 31,800
POSTED SPEED LIMIT = 45-70MPH

HARLEM AVE.
2016 ADT = 750
POSTED SPEED LIMIT = 30MPH

PAULING RD.
2016 ADT = 1,300
POSTED SPEED LIMIT = 45MPH

**IMPROVEMENT LOCATION 4:
I-55 AT CATON FARM RD.
CITY OF JOLIET
SN: 099-0210**

**IMPROVEMENT LOCATION 3:
I-55 AT BLACK RD.
CITY OF JOLIET
SN: 099-0209**



PLAINFIELD AND JOLIET TOWNSHIPS

TRAFFIC DATA:

I-55
2016 ADT = 83,500
POSTED SPEED LIMIT = 65MPH

BLACK RD.
2016 ADT = 22,900
POSTED SPEED LIMIT = 40MPH

CATON FARM
2016 ADT = 30,500
POSTED SPEED LIMIT = 35MPH

US 6
2015 ADT = 11,100
POSTED SPEED LIMIT = 30MPH

**IMPROVEMENT LOCATION 5:
US RTE. 6 OVER WCL R.R.
CITY OF JOLIET
SN: 099-0282**

MODEL: Default
 FILE: \\nas01c.psw.us.ibm.com\B&E\BID\NTEC\Illinois\gov\PI\DOT\Documents\DOT_Offices\Director\Projects\ID1226\B&E\CAD\Drawings\DOT\22618-shr-pln.dgn

USER NAME = diaza	DESIGNED -	REVISED -
	DRAWN -	REVISED -
PLOT SCALE = 100,0000' / in.	CHECKED -	REVISED -
PLOT DATE = 12/11/2017	DATE -	REVISED -

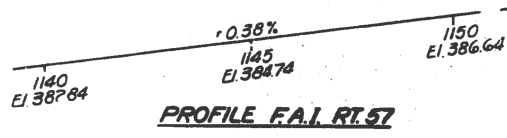
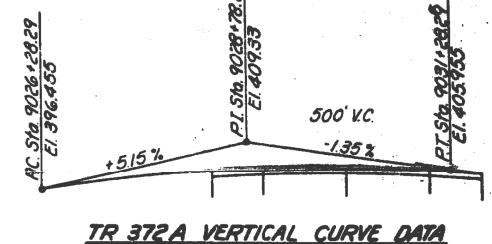
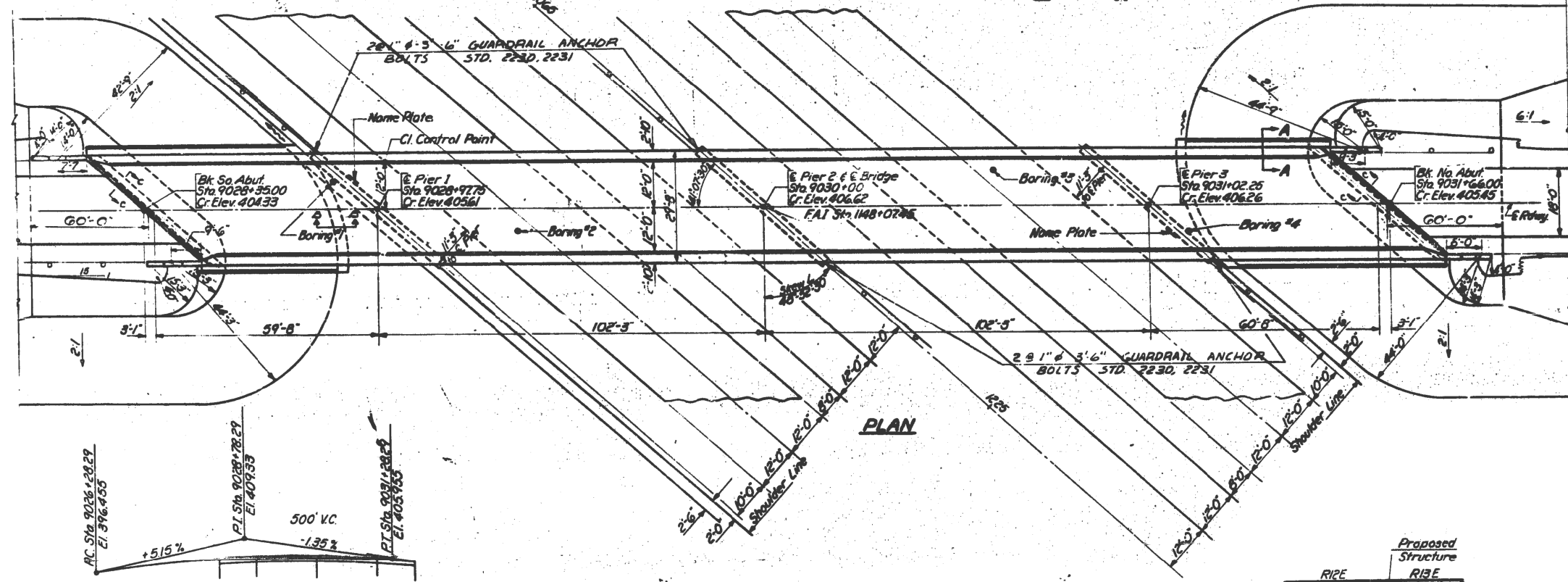
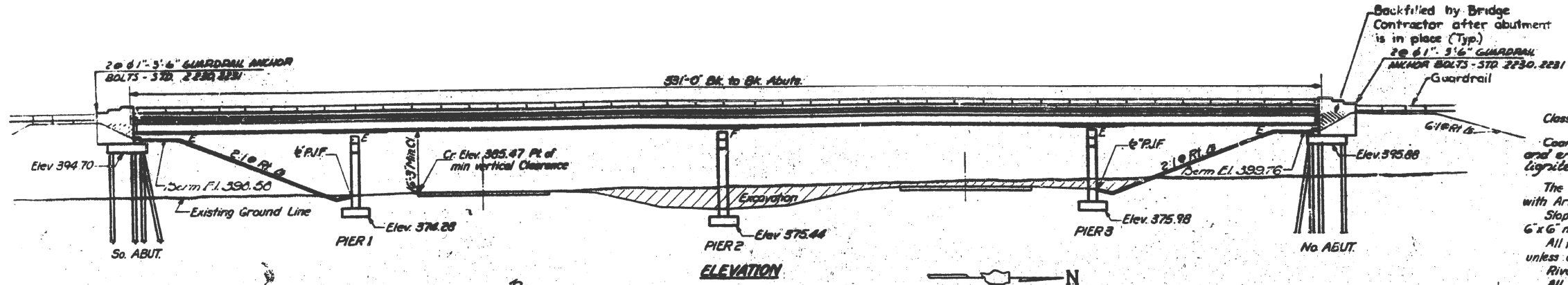
**STATE OF ILLINOIS
DEPARTMENT OF TRANSPORTATION**

LOCATION MAPS

SCALE: SHEET 1 OF 1 SHEETS STA. TO STA.

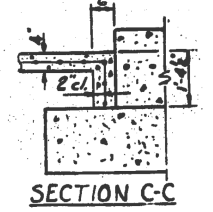
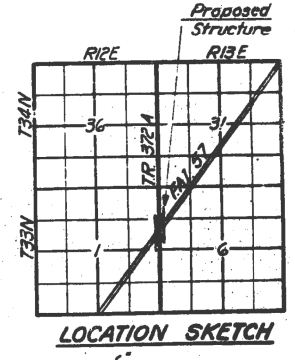
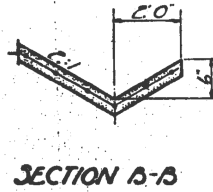
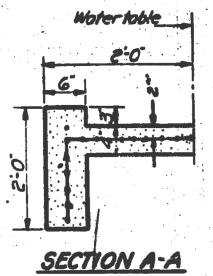
F.A. RTE.	SECTION	COUNTY	TOTAL SHEETS	SHEET NO.
VAR.	2017-056BP	WILL	25	4
			CONTRACT NO. 62F93	
		ILLINOIS	FED. AID PROJECT	

FOR INFORMATION ONLY



STATION 1148+07.45
 BUILT 196 BY
 STATE OF ILLINOIS
 F.A.I. RT.57 SEC.99-2HB
 F.A. PROJ 1-57-7(73)
 LOADING HS 15

NAME PLATE LETTERING
 See Standard 2113-1



DESIGN STRESSES
 $f_c = 1400$ psi. Super
 $f_c = 1400$ psi. Sub $n=10$
 $f_s = 20,000$ psi. Reinf.
 $f_s = 20,000$ psi. Struct.
 Max. Footing Press. = 5.7 kips/sq. ft.
LOADING HS 15-44

GENERAL NOTES
 Class I concrete shall be used throughout.
 Coarse aggregate to be used in parapet handrails and end posts must be free of chert, flint, limestone, lignite and soft sandstone.
 The concrete floor slab shall be finished in accordance with Article 51.9 of the Standard Specifications.
 Slope wall shall be reinforced with welded wire fabric 6"x6" mesh #4 wires, weighing 58# per 100 sq. ft.
 All reinforcement bars shall be lapped 20 diameters unless otherwise shown.
 Rivets 3/8", Open holes 1 1/2", unless noted.
 All bolsters, rockers, bearing plates, lead plates, pintles and anchor bolts shall be fabricated and set in accordance with Article 51.15 of the Standard Specifications and are included in quantity of Structural Steel.
 Anchor bolts shall be set before riveting diaphragms over supports.
 All Structural Steel shall conform to the ASTM Designation A-36.

Except as otherwise provided, all structural steel shall receive one shop coat of red lead paint and two field coats of aluminum paint. See Articles 56.1 to 56.5 inclusive of the Standard Specifications.
 The Contractor shall drive one concrete test pile in a permanent location at the South Abutment as directed by the Engineer, before ordering remainder of piles.
 Holes shall be precored for piles under South and North Abutments. See Articles 60.9(a) of the Standard Specifications.
 Expansion guards are included in quantity of Structural Steel.
 The exposed surfaces of the expansion guard shall be given two shop coats of red lead paint, the contact surfaces shall be given one coat of red lead paint. Anchor studs shall not be painted.
 Excavation for portions of structures in the embankment shall not be classified.
 Permanent forms will not be permitted in forming the concrete floor.

AS REVISED
GENERAL PLAN & ELEVATION
T.R. 372A OVER F.A.I. RT.57
PROJECT 1-57-7(73)332
F.A.I. RT.57 SEC.99-2HB
WILL COUNTY
STA. 1148+07.45

MODEL: Default
 FILE: \\nas01\pww\illinois\pww\pww\DOT\Documents\1148+07.45\1148+07.45.dwg
 PROJECT: 1148+07.45\1148+07.45.dwg
 OFFICE: 1148+07.45\1148+07.45.dwg
 DATE: 12/11/2017

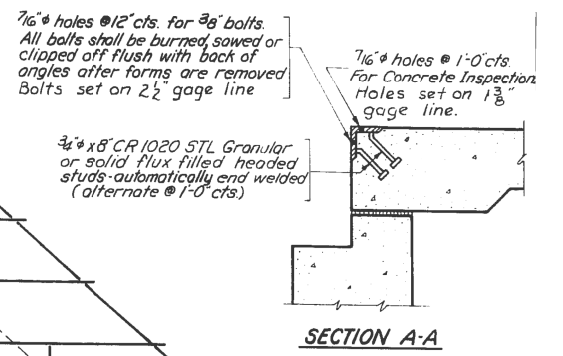
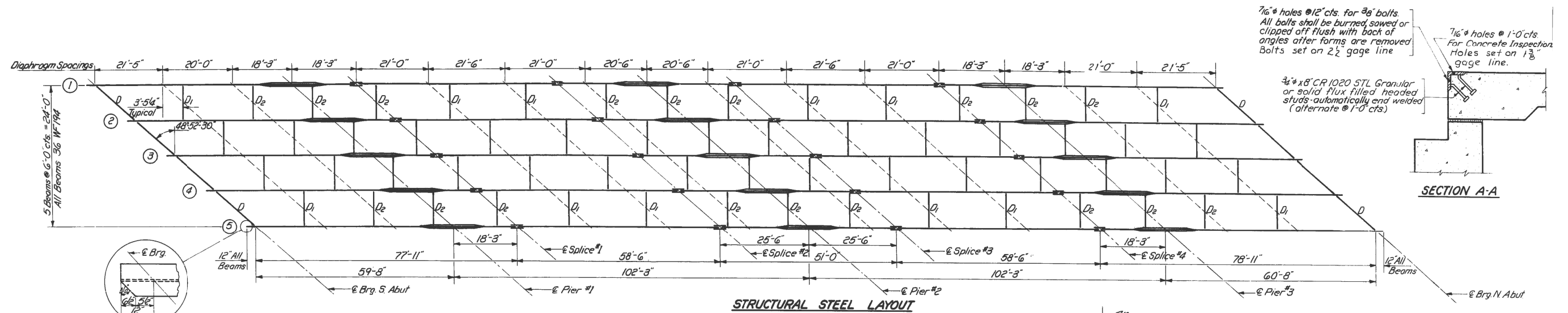
USER NAME = diaza	DESIGNED -	REVISED -
	DRAWN -	REVISED -
PLOT SCALE = 100,0000' / in.	CHECKED -	REVISED -
PLOT DATE = 12/11/2017	DATE -	REVISED -

STATE OF ILLINOIS
 DEPARTMENT OF TRANSPORTATION

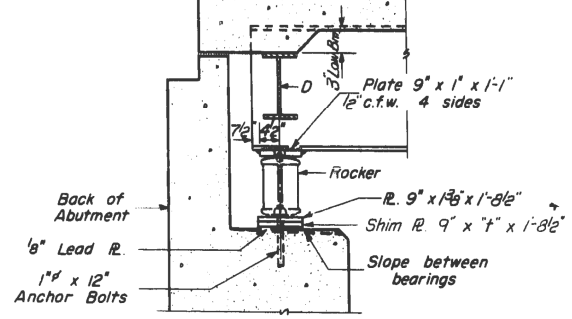
LOC. 1) SN 099-0202	
GENERAL PLAN AND ELEVATION	
SCALE:	SHEET OF SHEETS STA. TO STA.

F.A. RTE.	SECTION	COUNTY	TOTAL SHEETS	SHEET NO.
VAR.	2017-056BP	WILL	25	5
			CONTRACT NO. 62F93	
ILLINOIS FED. AID PROJECT				

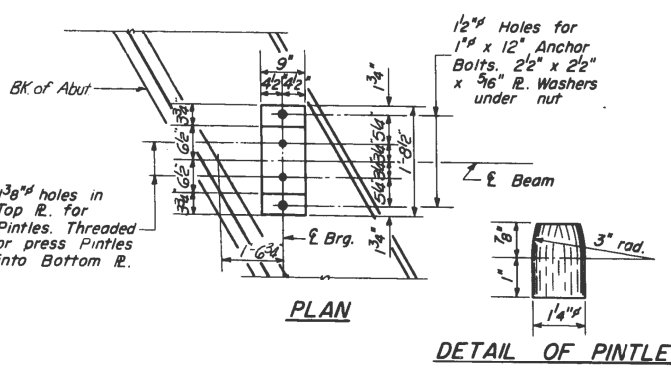
FOR INFORMATION ONLY



END OF BEAM DETAIL
At No. 5 Abut.

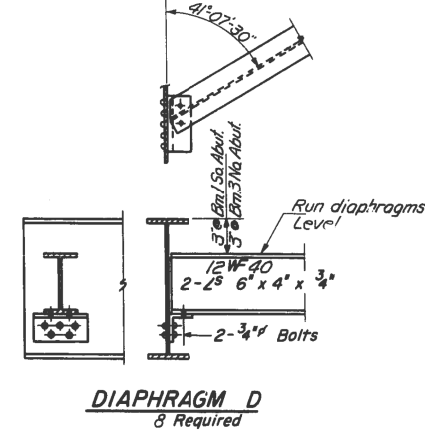


SECTION AT ABUTMENT

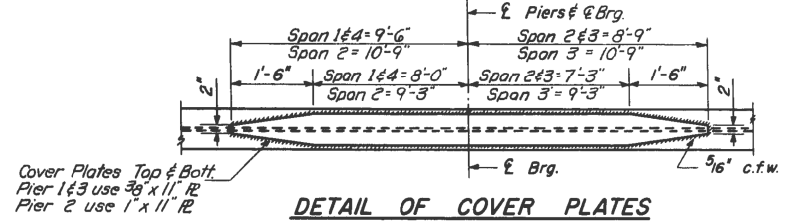


PLAN

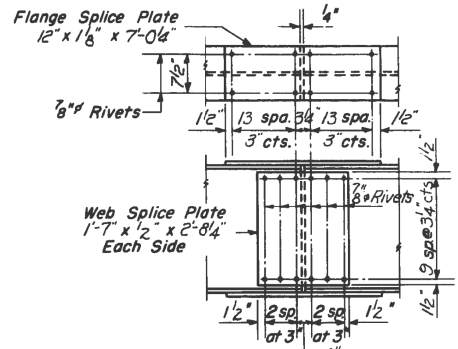
DETAIL OF PINTLE



DIAPHRAGM D
8 Required



DETAIL OF COVER PLATES



DETAIL OF SPLICE (20 Req'd)

STRUCTURAL STEEL
F.A.I. RT.57 SEC. 99-2HB
WILL COUNTY
STA. 11448+07.45

MODEL: Default
FILE: \\nas01\p001\B&E\BIDDING\Illinois\p001\BIDDING\Documents\BIDDING\Office\BIDDING\11448+07.45-SS-Structural.dgn

USER NAME = diazia	DESIGNED -	REVISED -
PLOT SCALE = 100,0000' / in.	CHECKED -	REVISED -
PLOT DATE = 12/11/2017	DATE -	REVISED -

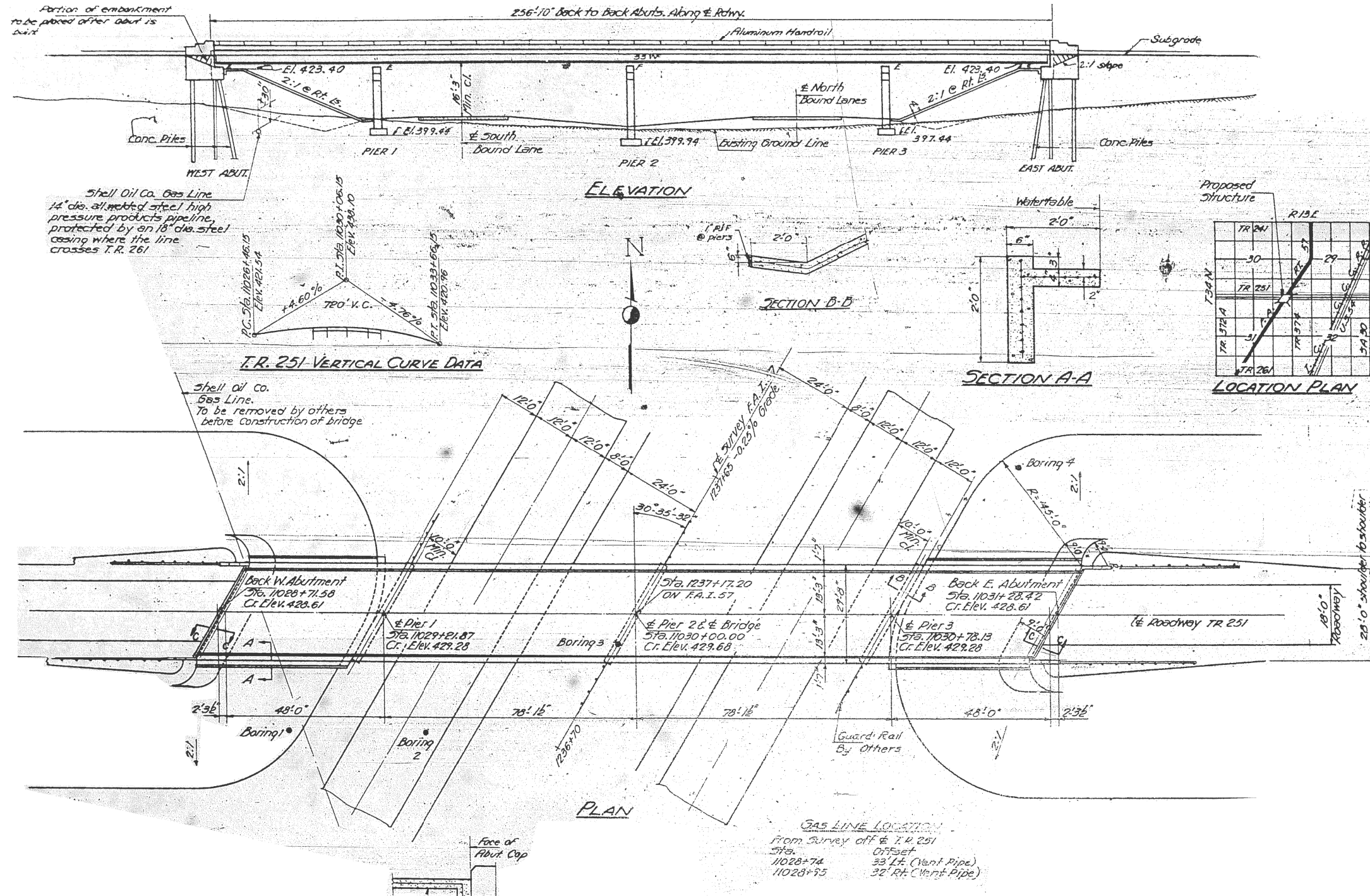
STATE OF ILLINOIS
DEPARTMENT OF TRANSPORTATION

LOC. 1) SN 099-0202
STRUCTURAL STEEL

SCALE: SHEET OF SHEETS STA. TO STA.

F.A. RTE.	SECTION	COUNTY	TOTAL SHEETS	SHEET NO.
VAR.	2017-056BP	WILL	25	6
CONTRACT NO. 62F93				
ILLINOIS FED. AID PROJECT				

FOR INFORMATION ONLY



GENERAL NOTES

Class-X Concrete shall be used throughout. Coarse aggregate, which is to be used in the end posts must be free of chert, flint, limonite, and soft sandstone.

The concrete floor slab shall be finished in accordance with Art. 51.19 of the Standard Specifications.

Slope walls shall be reinforced with welded wire fabric 6"x6" mesh, #4 wires, weighing 30/100 Sp. Ft. Rivets #2, Open Holes "76" unless noted.

Permanent forms will not be permitted in forming concrete floor.

All structural steel shall conform to A.S.T.M. Specifications Designation A-36.

All rockers, bearing plates, lead plates, pintles and anchor bolts shall be fabricated and set in accordance with Art. 51.15 of the Standard Specifications and are included in quantity of structural steel. Estimated Wt. 8870 Lbs.

Anchor Bolts shall be set before riveting diaphragms over supports.

All steel handrail posts shall be vertical.

Except as otherwise provided all structural steel shall receive one shop coat of red lead paint and two field coats of point.

Sec Arts. 56.1 to 56.5 inclusive of the Standard Specifications and Special Provisions.

All paint shall be furnished and applied by the Contractor.

The Contractor shall drive one test pile in permanent location as directed by the Engineer before ordering or casting remainder of piles.

One test pile at west Abutment.

The piles in the East and West Abutments shall be driven in holes precored through the embankment to the natural ground line in accordance with Art. 60.9(C) of the Standard Specifications.

EXCAVATION FOR PORTIONS OF STRUCTURES IN THE EMBANKMENTS SHALL NOT BE CLASSIFIED.

FIELD WELDING OF CONSTRUCTION ACCESSORIES TO THE BOTTOM FLANGES OR FOR A DISTANCE OF ± OF THE SPAN EACH WAY FROM PIER SUPPORTS ON THE TOP FLANGES OF BEAMS OR GIRDERS WILL NOT BE PERMITTED. FIELD WELDING IN OTHER AREAS WILL BE PERMITTED ONLY WHEN APPROVED BY THE ENGINEER.

**GENERAL PLAN & ELEVATION
TR 251 OVER F.A.I. 57
F.A.I. ROUTE 57-SEC. 99-118-2
PROJECT E-57-7(0)334
WILL COUNTY
STATION 11028+71.58**

MODEL: Default
FILE: \\nas01\pub\BUREAU\BUREAU\Illinois\pov\pov\DOT\Documents\DOT - Office\Bldg\11028+71.58-eb\bridge.dgn

USER NAME = diaza	DESIGNED -	REVISED -
	DRAWN -	REVISED -
PLOT SCALE = 100,0000' / in.	CHECKED -	REVISED -
PLOT DATE = 12/11/2017	DATE -	REVISED -

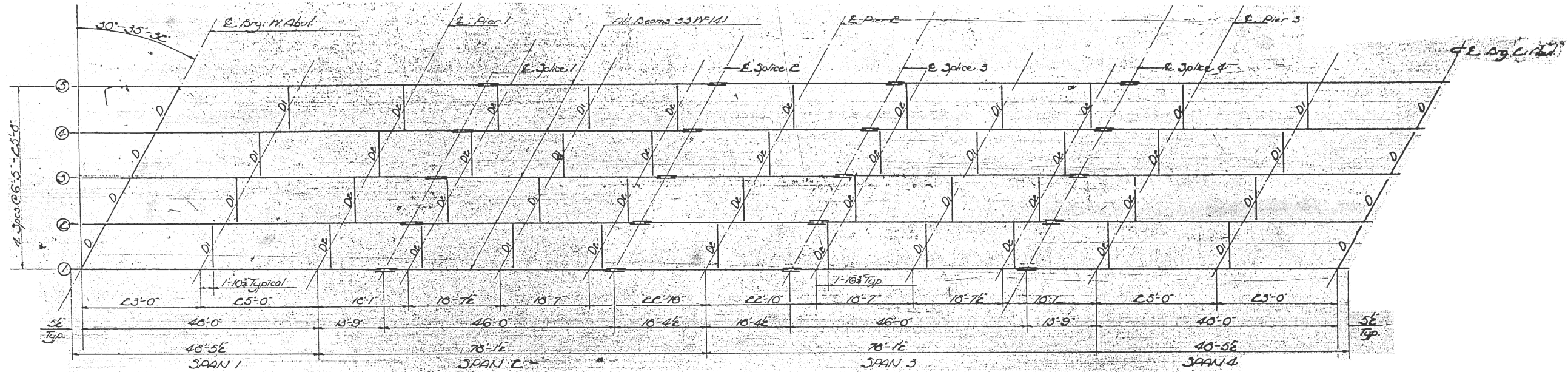
**STATE OF ILLINOIS
DEPARTMENT OF TRANSPORTATION**

**LOC. 2) SN 099-0204
GENERAL PLAN AND ELEVATION**

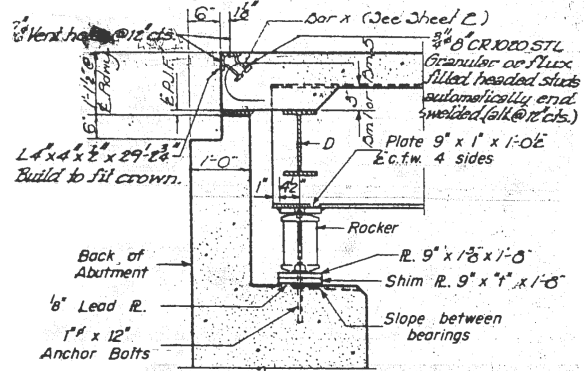
SCALE: SHEET OF SHEETS STA. TO STA.

F.A. RTE.	SECTION	COUNTY	TOTAL SHEETS	SHEET NO.
VAR.	2017-056BP	WILL	25	7
			CONTRACT NO. 62F93	
		ILLINOIS FED. AID PROJECT		

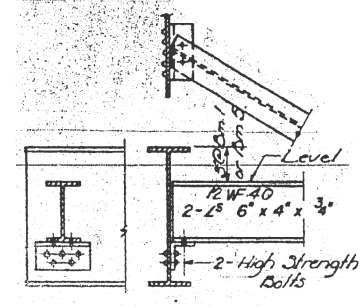
FOR INFORMATION ONLY



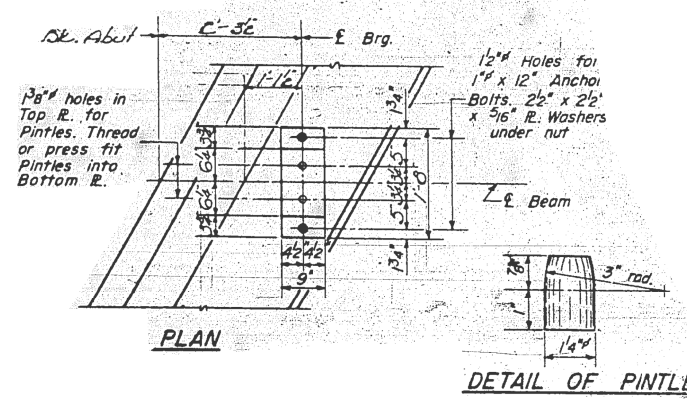
FRAMING PLAN



SECTION AT ABUTMENT @ R.L.S.

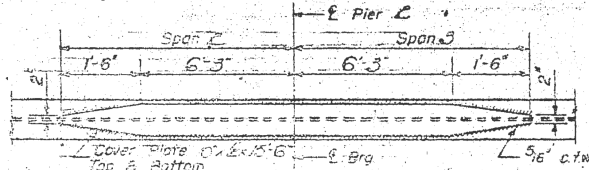


DIAPHRAGM D
D Required

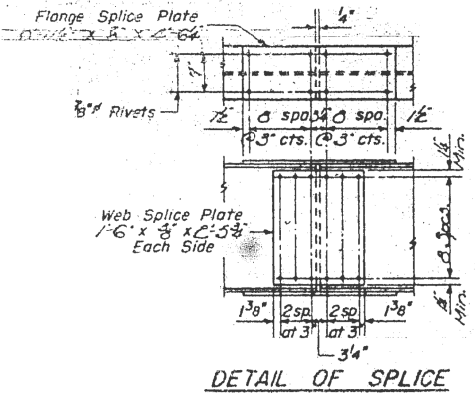


PLAN

DETAIL OF PINTLE



DETAIL OF COVER PLATES



DETAIL OF SPLICE

STRUCTURAL STEEL
F.A.I. RT. 57 ~ SEC. 99-111B-E
WILL COUNTY
STA. 1237 +17.20

MODEL: Default
FILE: \\nas01\paul\B&E\BID\ITC\Illinois\gov\FWIDOT\Documents\BID\Office\BID\ref\1\proj\csd\1225\BICAD\B&E\Design\122618-eh\bridge.dgn

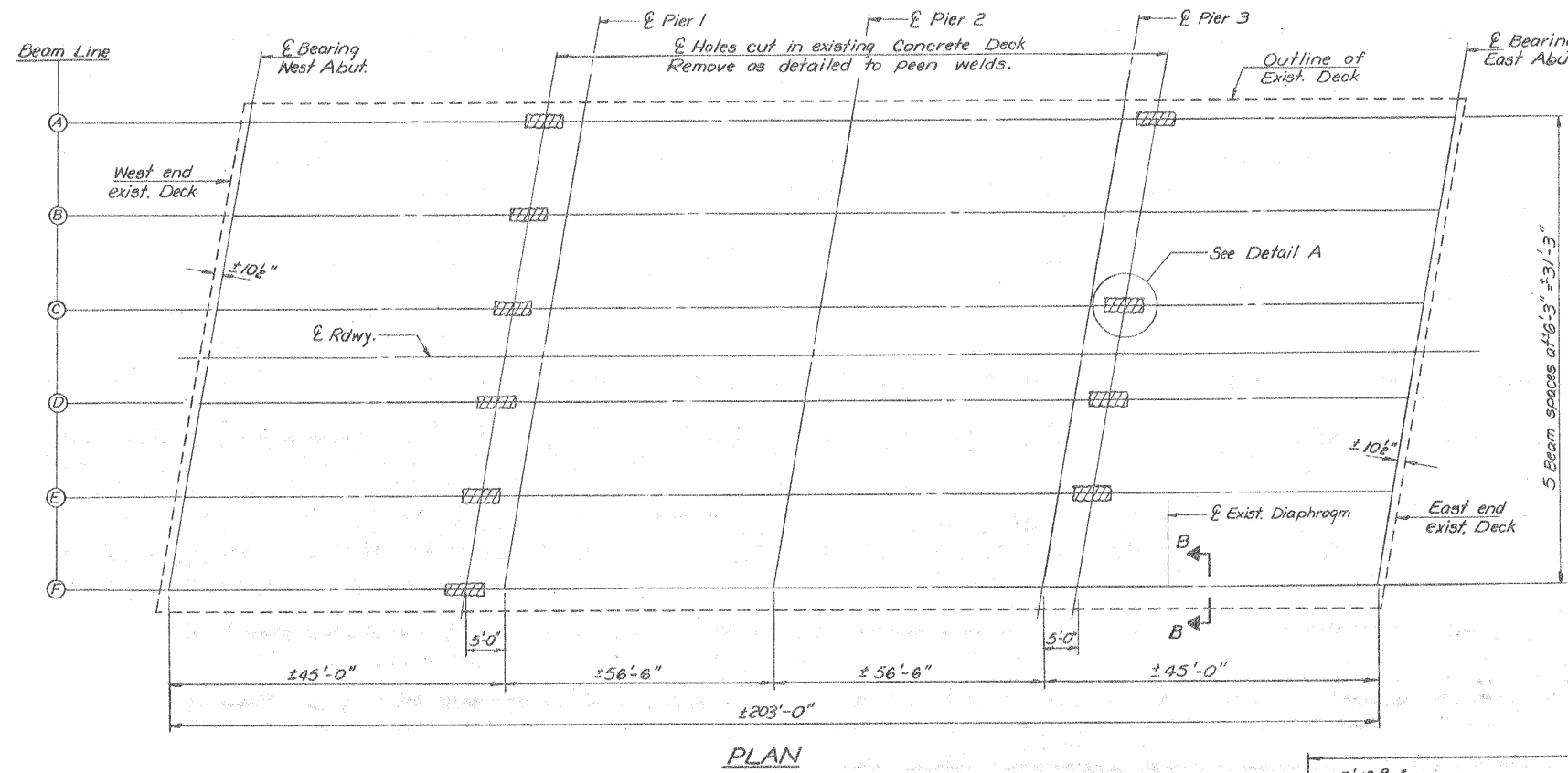
USER NAME = diaza	DESIGNED -	REVISED -
PLOT SCALE = 100.0000' / in.	DRAWN -	REVISED -
PLOT DATE = 12/11/2017	CHECKED -	REVISED -
	DATE -	REVISED -

STATE OF ILLINOIS
DEPARTMENT OF TRANSPORTATION

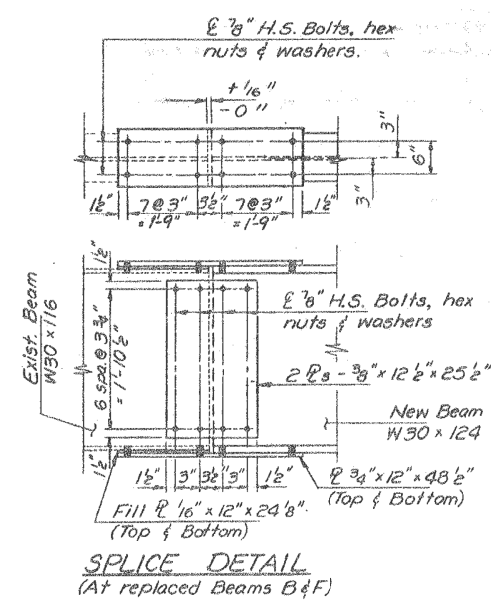
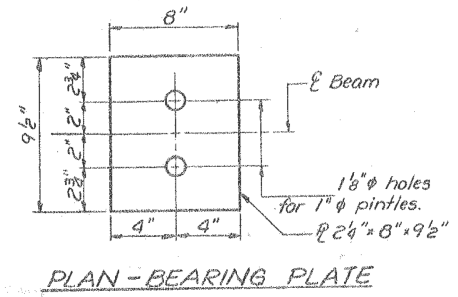
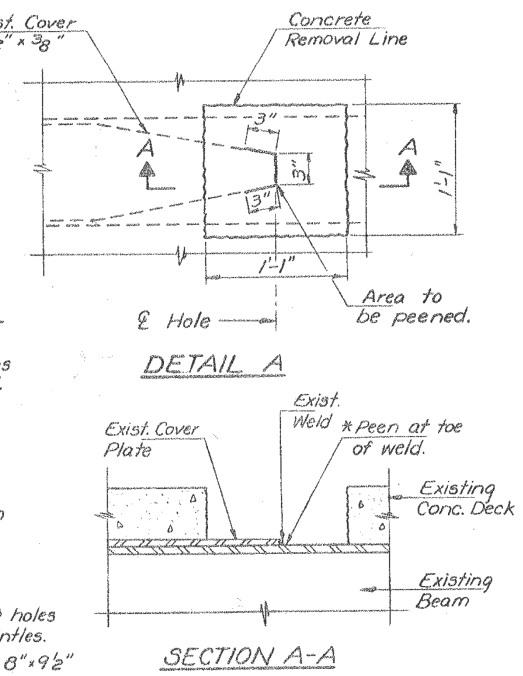
LOC. 2) SN 099-0204	F.A. RTE.	SECTION	COUNTY	TOTAL SHEETS	SHEET NO.
STRUCTURAL STEEL		2017-056BP	WILL	25	8
SCALE:	SHEET	OF	SHEETS	STA.	TO STA.

CONTRACT NO. 62F93	
ILLINOIS	FED. AID PROJECT

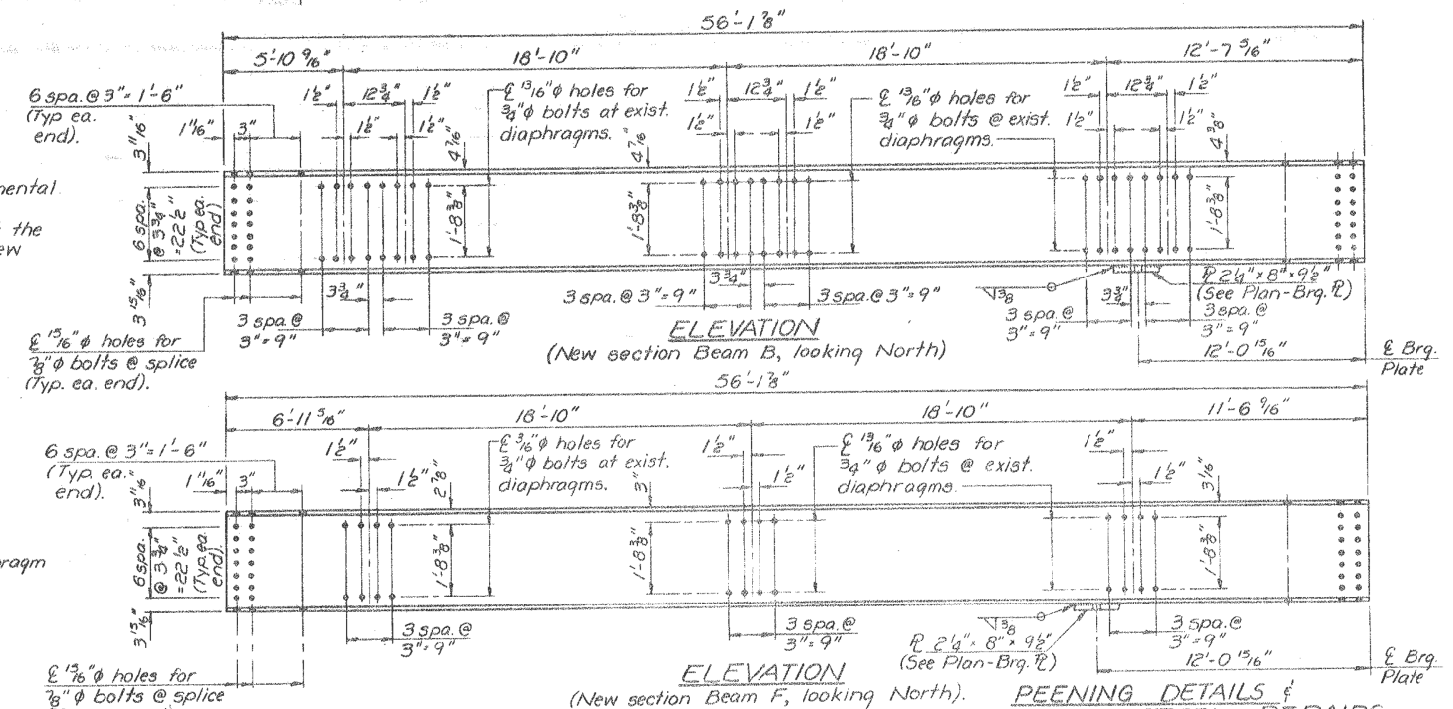
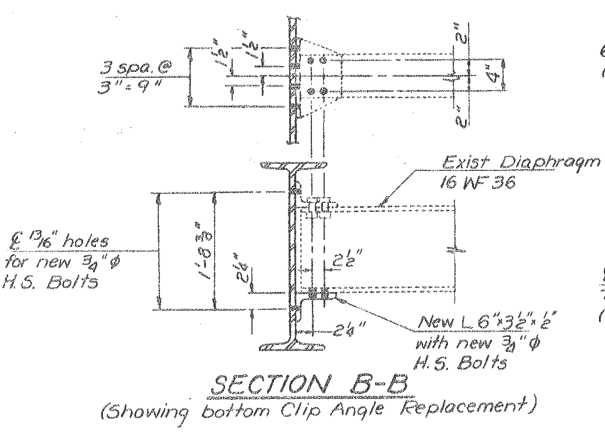
FOR INFORMATION ONLY



Notes: Hatched areas indicate part of existing concrete deck to be removed to peen welds. Cost of removal is incidental to Removal of Existing Concrete Deck.
 Cost to peen welds shall be incidental to Structural Steel.
 Peen welds for existing cover plates on top flanges only.
 Peen welds for existing beams A thru F before Deck Removal.



Notes: For plan of replacement section, see Sheet 10 of 20. Original fabrication plans were used in the preparation of the repair sections.
 All new structural steel shall conform to the Supplemental Requirements for Notch Toughness Zone 2.
 The Contractor may use the existing splice plate, at the replaced section, as a template to drill holes in the new replacement beam sections and splice plates.



PEENING DETAILS & STRUCTURAL STEEL REPAIRS
 F.A.U.R.T. 0298 SEC. 99-2HBK-BY (82)
 WILL COUNTY
 STA. 20+00.00

MODEL: Default
 FILE: \\mllc01\B&E\BID\ITC\Illinois\govt\PIVDOT\Documents\BIDD\Office\BID\ref_1\proj\csd\1225\BICAD\B&E\Design\1225-18-ehv\figs.dgn

USER NAME = diaza	DESIGNED -	REVISED -
PLOT SCALE = 100,0000' / in.	DRAWN -	REVISED -
PLOT DATE = 12/11/2017	CHECKED -	REVISED -
	DATE -	REVISED -

**STATE OF ILLINOIS
DEPARTMENT OF TRANSPORTATION**

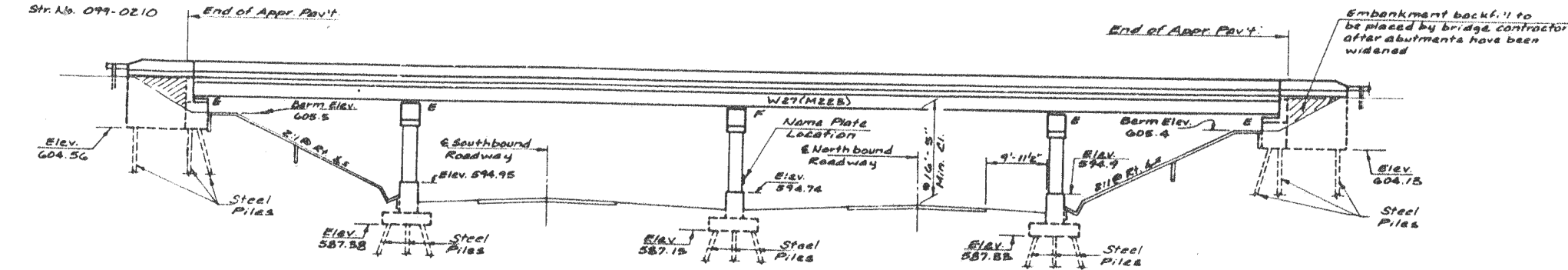
LOC. 3) SN 099-0209	
STRUCTURAL STEEL REPAIRS	
SCALE:	SHEET OF SHEETS STA. TO STA.

F.A. RTE.	SECTION	COUNTY	TOTAL SHEETS	SHEET NO.
VAR.	2017-056BP	WILL	25	11
CONTRACT NO. 62F93				
ILLINOIS FED. AID PROJECT				

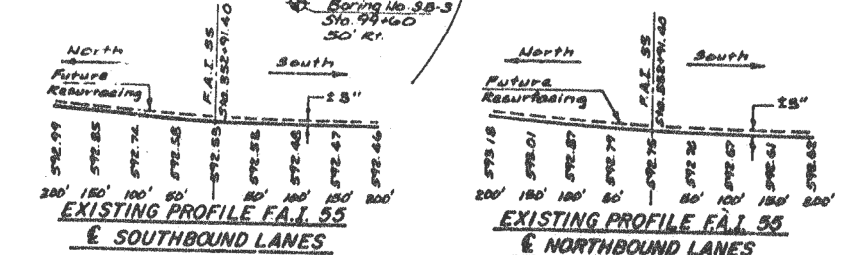
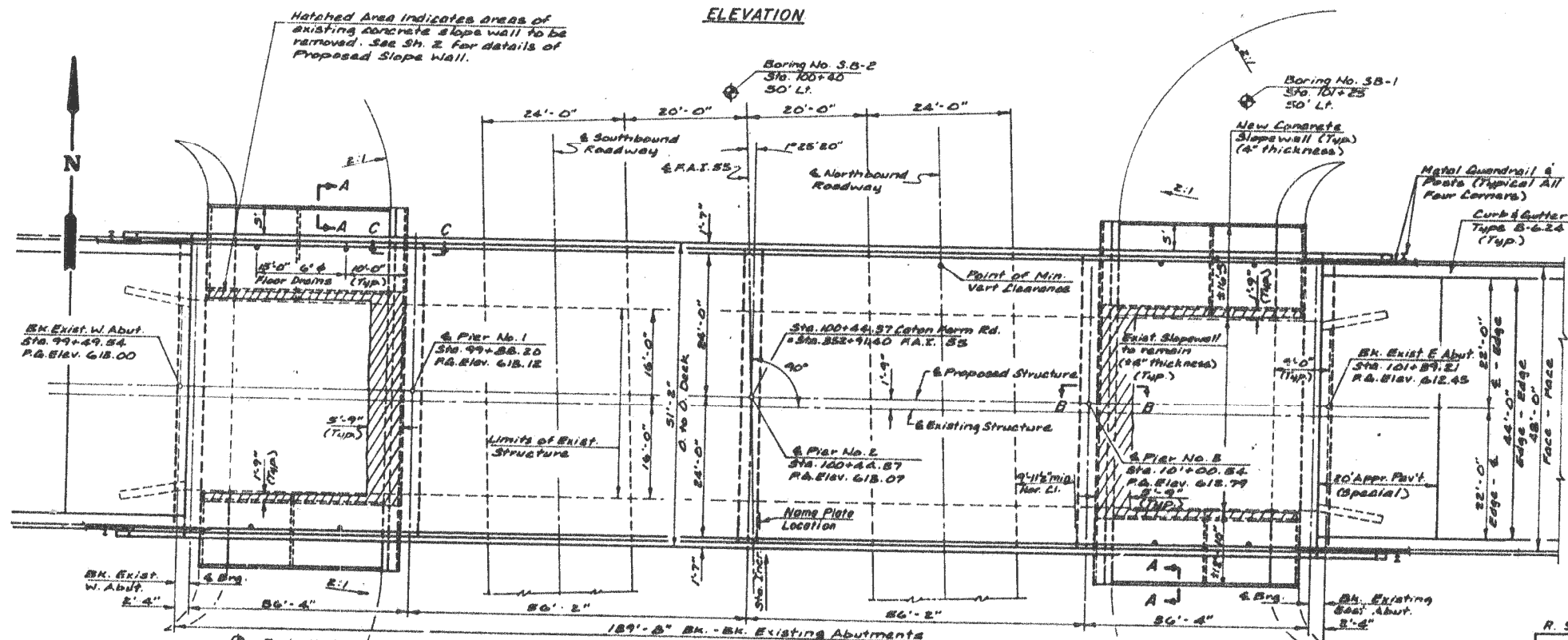
FOR INFORMATION ONLY

B.M. "D" Inside edge hubquard N.W. corner of overpass
 15' Lt. Sta. 99+50
 Elev. 612.57

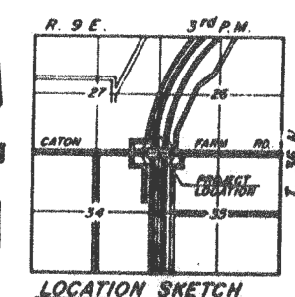
Existing Structure: Precast Prestressed Concrete I-Beam grade separation structure.
 Spans 20' 56'-4" and 20' 56'-2". R.C. Column piers, spill thru abutments.
 Remove superstructure and construct new superstructure. Widen existing
 Substructure. Caton Farm Road to be closed during reconstruction.
 Savings: None
 Str. No. 099-0210



* Figured "B" above
 Existing Profile Grade
 on F.A.S. 55



DESIGN SPECIFICATIONS
 1988 AASHTO and 1984, 1985, 1986
 thru 1988 Interims as applicable
LOADING HS 20-44
 Allow 257/sq.ft. for future wearing surface.
DESIGN STRESSES
 f'c = 8,500 p.s.i.
 f'y = 60,000 p.s.i. (Reinf.)
 f'y = 80,000 p.s.i. (Struct.)
 E = 29,000,000 p.s.i. (Concrete)



GENERAL PLAN
CATON FARM ROAD OVER F.A.S. 55
SECTION 68-00074-13-8R
WILL COUNTY
STATION 100+44.37
STR. NO. 099-0210

MODEL: Default
 FILE: \\nas02.psu.edu\BIBED\BIBED\ITC\Illinois\gov\p\DOT\Documents\DOT - Office\BIBED\11\projects\1225\BIBED\BIBED\Design\1225\18-eh\bridge.dgn

USER NAME = diaza	DESIGNED -	REVISED -
	DRAWN -	REVISED -
PLOT SCALE = 100,0000' / in.	CHECKED -	REVISED -
PLOT DATE = 12/11/2017	DATE -	REVISED -

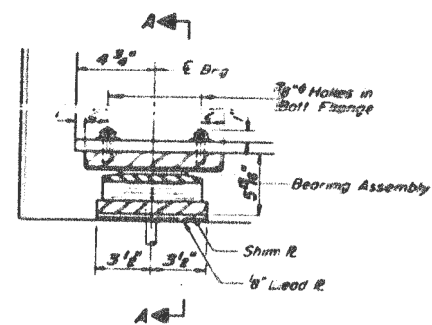
STATE OF ILLINOIS
 DEPARTMENT OF TRANSPORTATION

LOC. 4) SN 099-0210
 GENERAL PLAN

SCALE: SHEET OF SHEETS STA. TO STA.

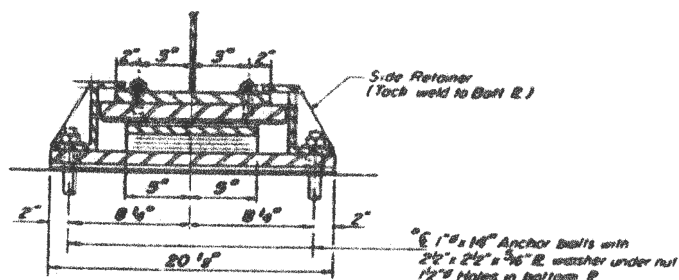
F.A. RTE.	SECTION	COUNTY	TOTAL SHEETS	SHEET NO.
VAR.	2017-056BP	WILL	25	13
			CONTRACT NO. 62F93	
ILLINOIS FED. AID PROJECT				

FOR INFORMATION ONLY

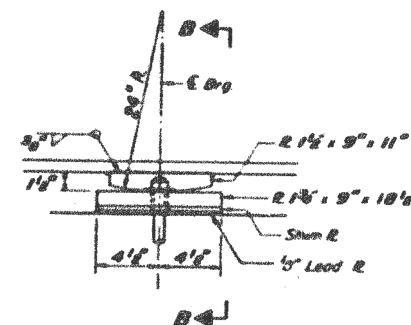


SECTION AT EAST & WEST ABUTS.

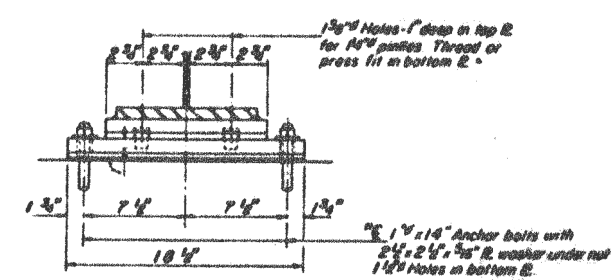
TYPE II TFE ELASTOMERIC EXP BRG.



SECTION A-A

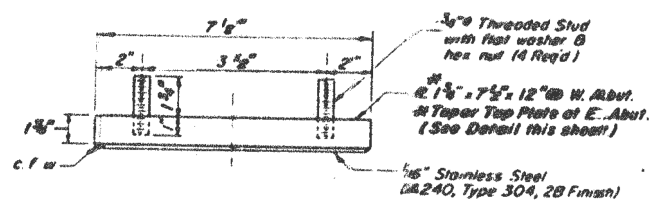


ELEVATION AT PIER 2

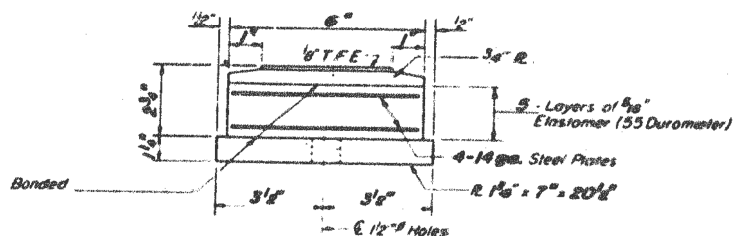


SECTION B-B

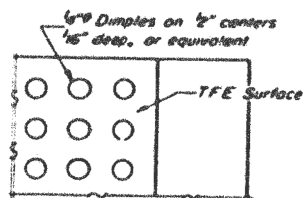
FIXED BEARING



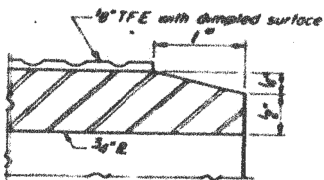
TOP BEARING ASSEMBLY



BOTTOM BEARING ASSEMBLY



PLAN-TFE SURFACE

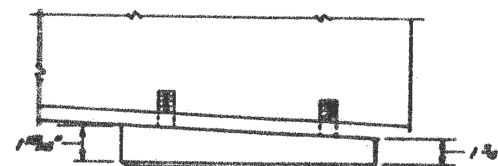


SECTION THRU TFE

Note: Anchor bolts of fixed bearings may be built into the masonry. See shear #11 for Anchor Bolt installation.

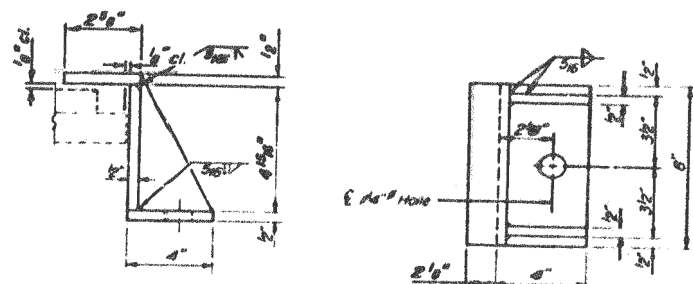


PINTLE



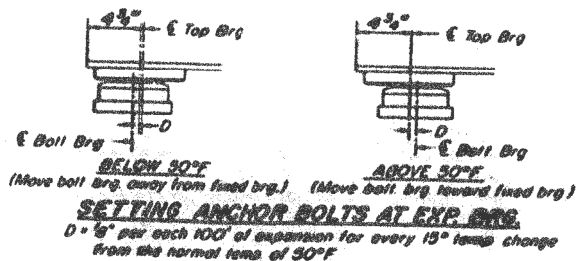
TOP BEARING ASSEMBLY AT EAST ABUTMENT

Note: The 1/8" TFE sheet shall be bonded directly to the top steel plate with a two-component, medium viscosity epoxy resin, conforming to the requirements of the Federal Specification MMM-A-134, Type I. The bond agent shall be applied on the full area of the contact surfaces. Bonding of 1/8" TFE sheet during vulcanizing process will be permitted provided the process and method of adjusting assembly height is approved by the Engineer.



SIDE RETAINER

Equivalent rolled angle with stiffeners will be allowed in lieu of welded plates.



SETTING ANCHOR BOLTS AT EXP BRG. D = 1/8" per each 100' of expansion for every 15° temp change from the normal temp. of 50°F

BEARING DETAILS
PIER 2, EAST & WEST ABUTMENTS
CATON FARM ROAD OVER I-55
SECTION 86-0004-D-01
WILL COUNTY
STATION 100+4.87

MODEL: Default
FILE: Name: P:\ULB\B&E\BID\TEC\Illinois\pov\PIV\DOT\Documents\BIDD\Office\BIDD\ref\11\proj\sect\1225\BICAD\data\Defm\122518-eh\bridge.dgn

USER NAME = diaza	DESIGNED -	REVISED -
	DRAWN -	REVISED -
PLOT SCALE = 100,0000' / in.	CHECKED -	REVISED -
PLOT DATE = 12/11/2017	DATE -	REVISED -

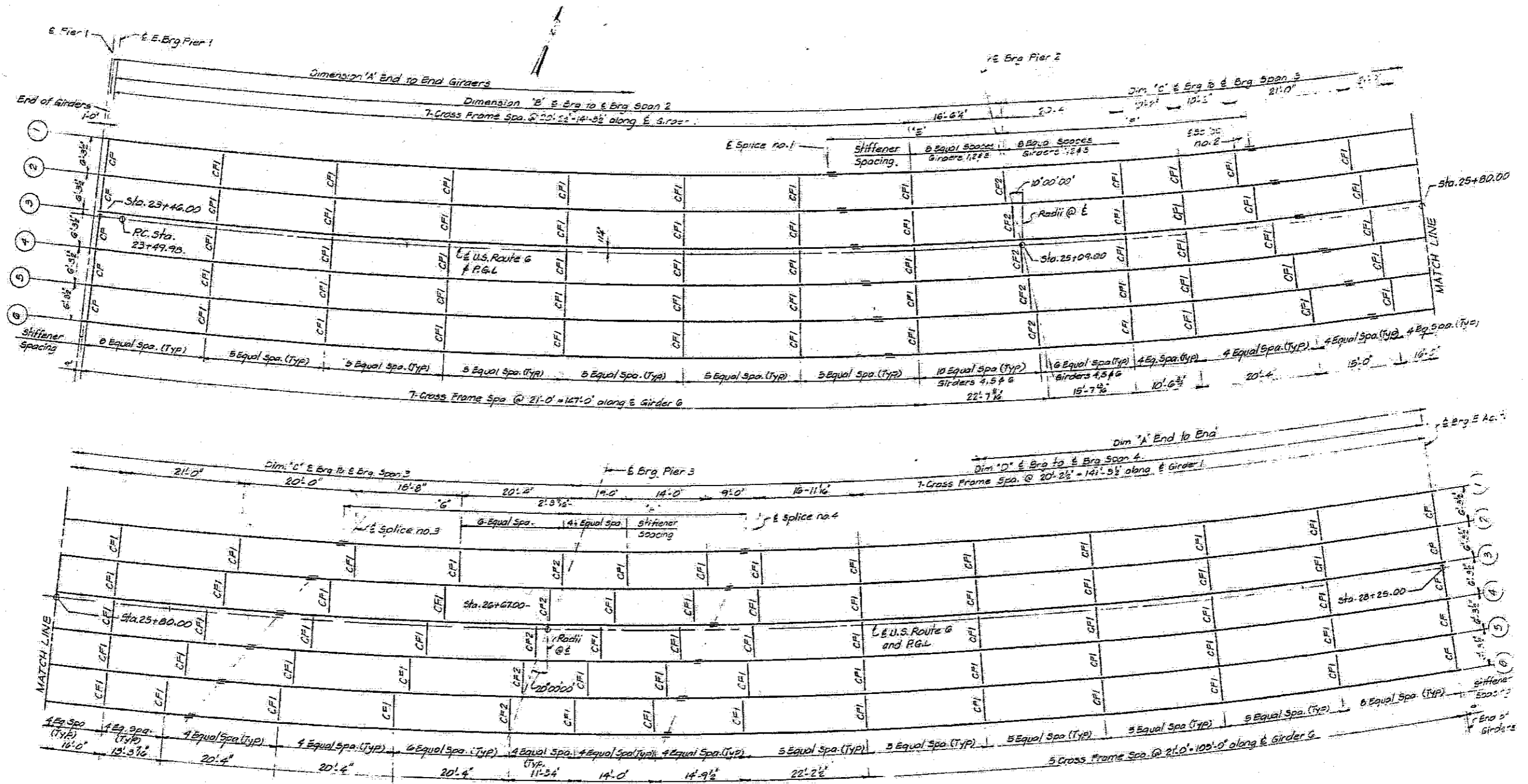
STATE OF ILLINOIS
DEPARTMENT OF TRANSPORTATION

LOC. 4) SN 099-0210
BEARING DETAILS PIER 2, EAST & WEST ABUTMENTS

SCALE: SHEET OF SHEETS STA. TO STA.

F.A. RTE.	SECTION	COUNTY	TOTAL SHEETS	SHEET NO.
VAR.	2017-056BP	WILL	25	15
			CONTRACT NO. 62F93	
ILLINOIS FED. AID PROJECT				

FOR INFORMATION ONLY



FRAMING PLAN
 FOR DIMENSIONS A THRU H, SEE DWG. NO. 11
 ALL CROSS FRAMES ARE RADIAL BETWEEN CURVED GIRDERS.

STATE OF ILLINOIS DEPARTMENT OF TRANSPORTATION	
STRUCTURAL STEEL	
JACKSON ST. OVER E. J. & E. R.R.	
F.A.U. ROUTE 0302 (U.S. RTE. 6) SEC. 33 VB-86	
WILL COUNTY	
STA. 24+72.25	
DESIGNED BY: G.W.	CHECKED BY: J.C.
DRAWN BY: V.K.	DATE: 5-19-89

MODEL: Default
 FILE NAME: P:\WILLCOB\BENTLEY\Illinois\proj\WILLCOB\Documents\DOT\Office\Struct\11\Projects\01265\BACAD\Drawings\11\2618-struct\06.dgn

USER NAME = diazla	DESIGNED -	REVISED -
PLOT SCALE = 100.0000' / in.	DRAWN -	REVISED -
PLOT DATE = 12/11/2017	CHECKED -	REVISED -
	DATE -	REVISED -

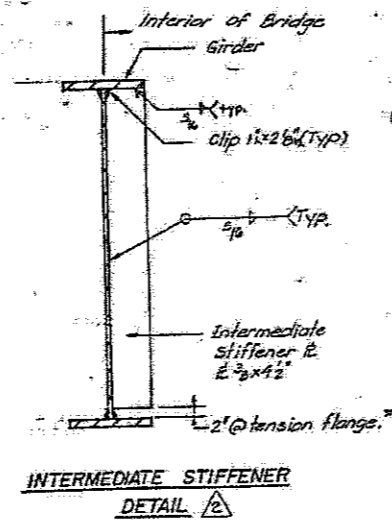
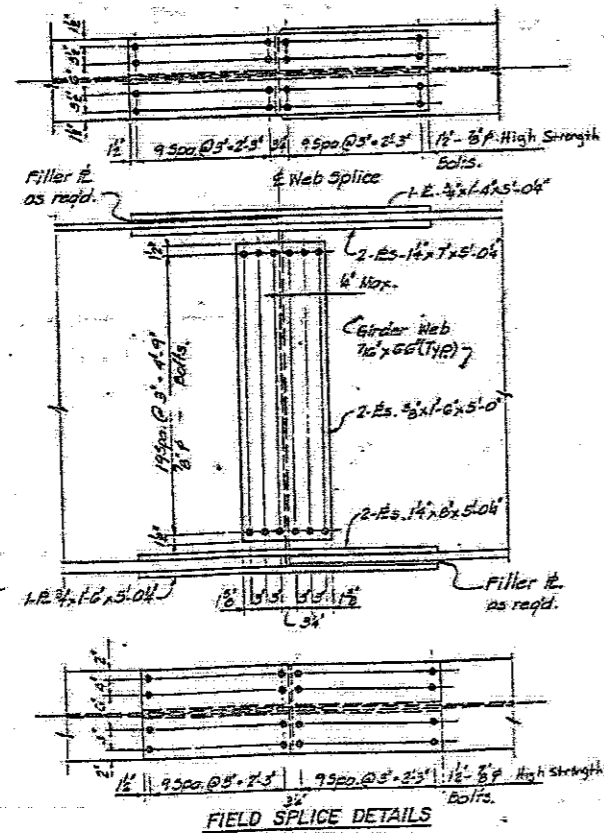
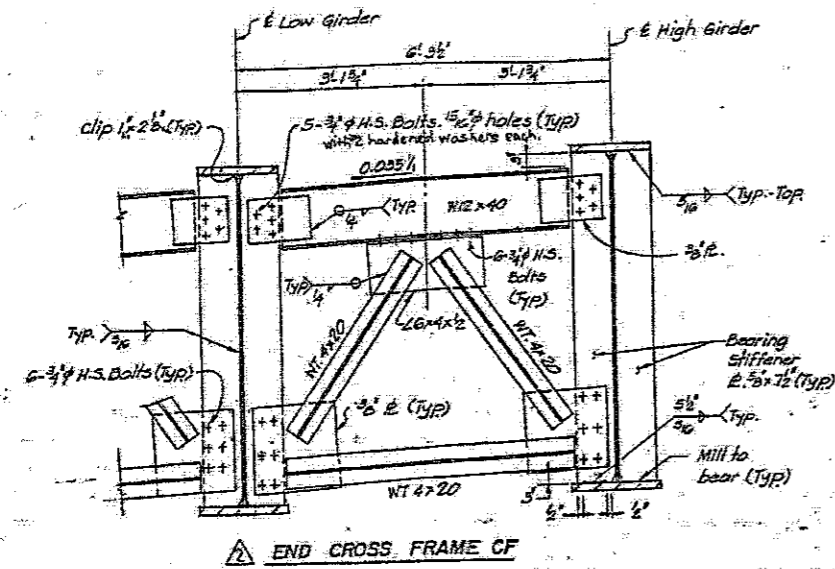
STATE OF ILLINOIS
DEPARTMENT OF TRANSPORTATION

LOC. 5) SN 099-0282
STRUCTURAL STEEL

SCALE: SHEET OF SHEETS STA. TO STA.

F.A. RTE.	SECTION	COUNTY	TOTAL SHEETS	SHEET NO.
VAR.	2017-0568P	WILL	25	17
CONTRACT NO. 62F93				
ILLINOIS FED. AID PROJECT				

FOR INFORMATION ONLY



* The top flange between splices 1+2 and 3+4. The bottom flange at all other locations (typ. all girders).

STATE OF ILLINOIS
DEPARTMENT OF TRANSPORTATION
STRUCTURAL STEEL DETAILS
JACKSON ST. OVER E.J. & E.P.R.
I-55 ROUTE 0302 (U.S. RT. 6) SEC. 33.1B-B0
WILL COUNTY
STA. 24+72.25

MODEL: Default
FILE NAME: p:\1106\EMD\INTEG. Illinois.gov\FWD\DOT\Documents\DOT - Office\B\District - IP\Project\012116\B\CADD\B\Design\01216\B-Sub\bridge.dgn

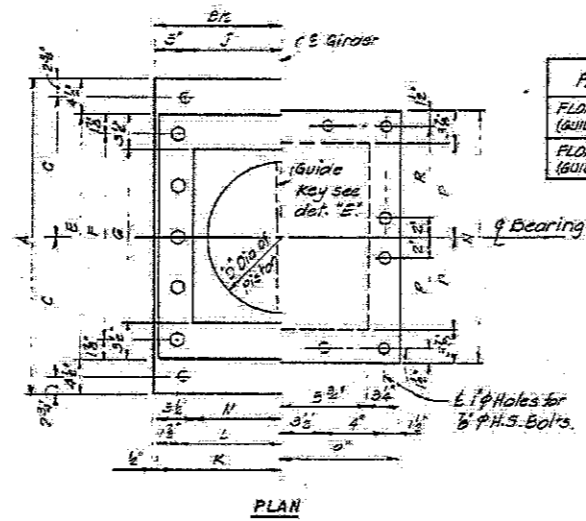
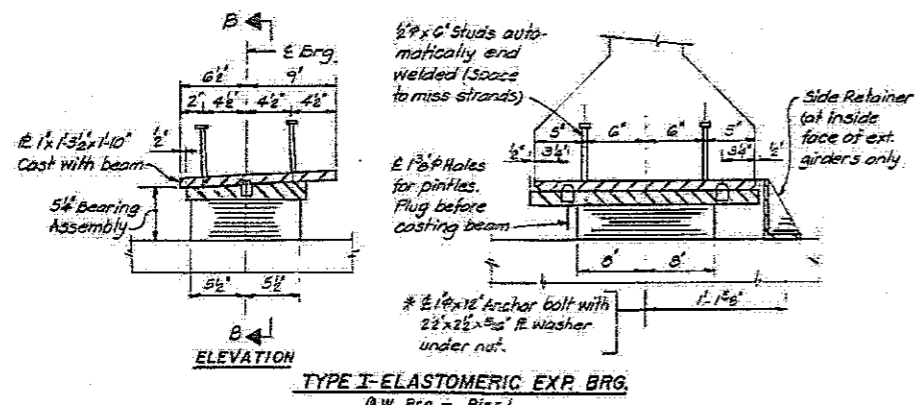
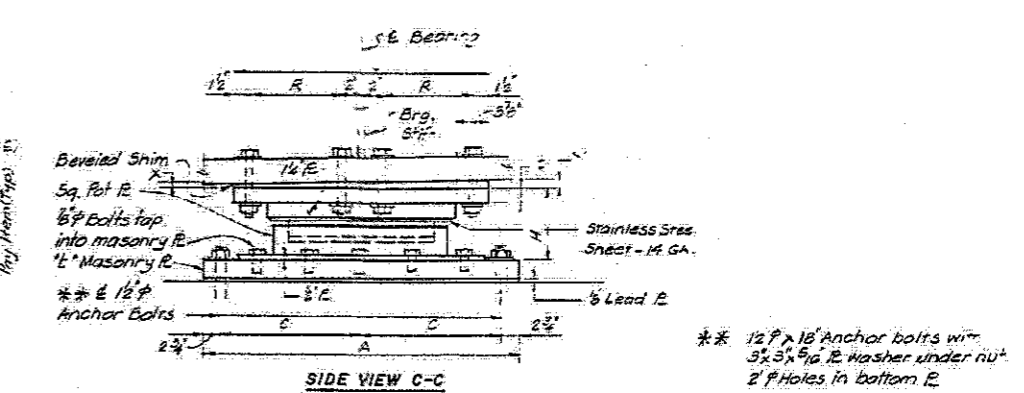
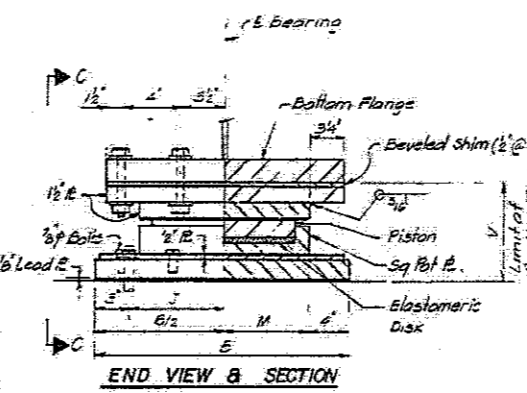
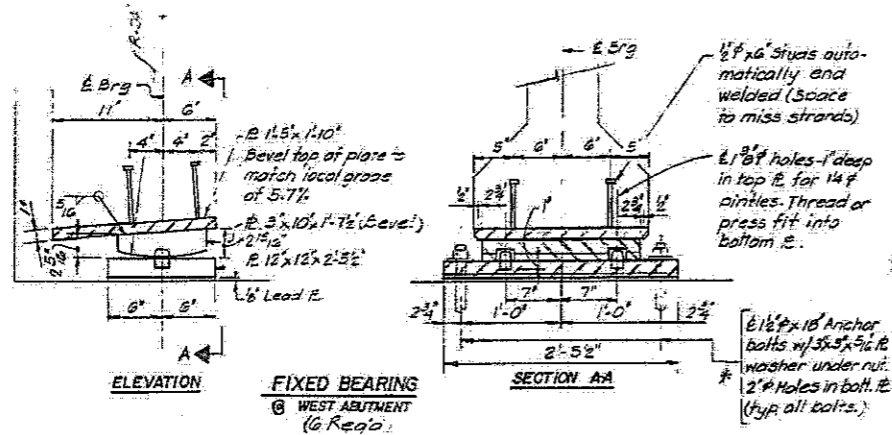
USER NAME = dila	DESIGNED -	REVISED -
PLOT SCALE = 100.0000' / in.	DRAWN -	REVISED -
PLOT DATE = 12/11/2017	CHECKED -	REVISED -
	DATE -	REVISED -

STATE OF ILLINOIS
DEPARTMENT OF TRANSPORTATION

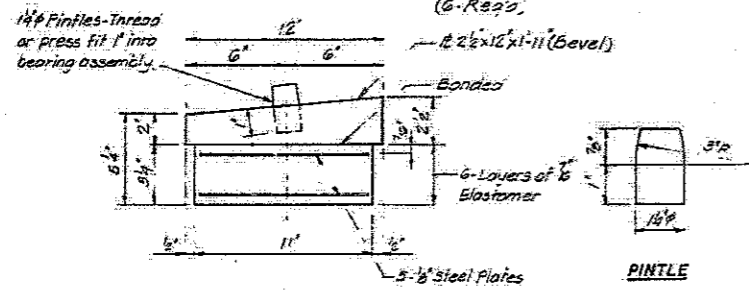
LOC. 5) SN 099-0282	
STRUCTURAL STEEL DETAILS	
SCALE:	SHEET OF SHEETS STA. TO STA.

F.A. RTE.	SECTION	COUNTY	TOTAL SHEETS	SHEET NO.
VAR.	2017-056BP	WILL	25	19
CONTRACT NO. 62F93				
ILLINOIS FED. AID PROJECT				

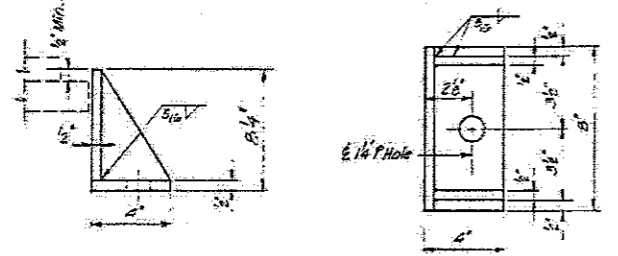
FOR INFORMATION ONLY



PAY ITEM	LOCATION	DIMENSIONS																				
		A	B	C	D	E	F	G	H	J	K	L	M	N	P	R	S	T	U	V	X	Y
FLOATING BEARING (GUIDED EXP) 150*	E. Brg. Pier 1 & E. Abut. (12 Req'd)	2'-2 1/4"	1'-0 1/2"	10 3/8"	8 3/8"	1'-5 1/4"	1'-1 1/2"	10 1/4"	5 1/2"	6 6 3/8"	8 3/8"	6 3/4"	5 1/2"	1'-0 1/2"	5 1/2"	5 1/2"	2'	1'	1'-0 1/2"	7 1/2"	4 1/2"	2 1/2"
FLOATING BEARING (GUIDED EXP) 350*	PIER 3	2'-6 1/2"	1'-0 1/2"	1'-0 1/2"	12 1/8"	1'-4 1/2"	1'-5 1/4"	1'-2 1/2"	5 1/2"	8 1/4"	10 3/8"	8 3/8"	7 1/4"	1'-10 1/4"	7 1/4"	7 1/2"	3'	12'	1'-10 1/4"	9 1/2"	5 1/2"	6"

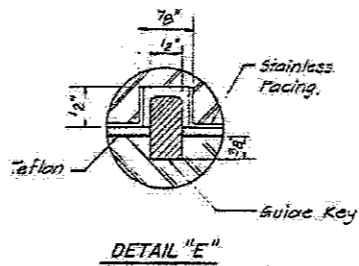


BEARING ASSEMBLY
NOTE: Shim plates shall not be placed under Bearing Assembly.

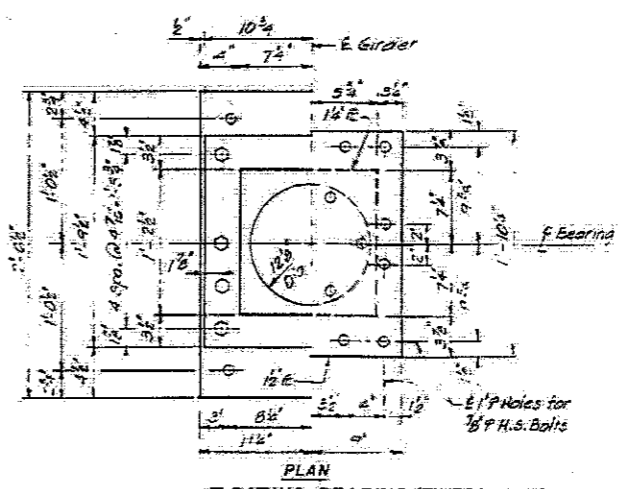
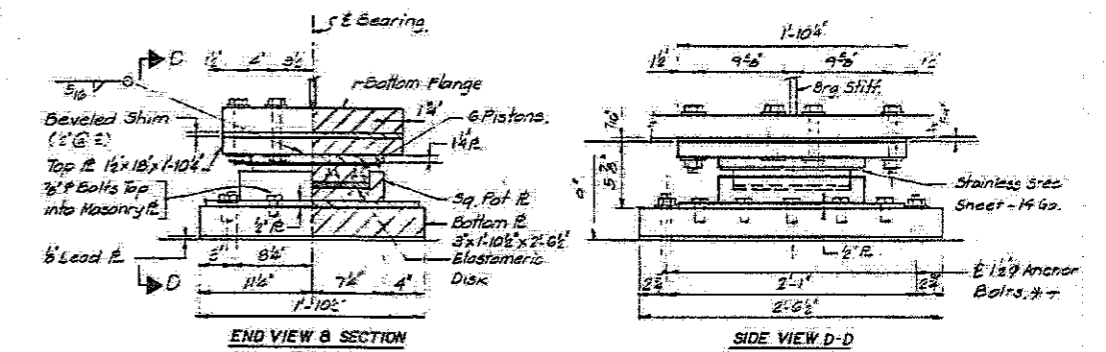


SIDE RETAINER
12-Req'd

* NOTE:
After girders have been erected holes or expansion bearings shall be drilled and anchor bars grouted in place. Anchor bolts at fixed bearings may be built into the masonry.



FLOATING BEARING (GUIDED EXP) 150*
@ E. Brg - Pier 1 & E. Abut. (12 Req'd)
FLOATING BEARING (GUIDED EXP) 350*
Pier 3 (6-Req'd)



All bearing steel is A-135.

STATE OF ILLINOIS DEPARTMENT OF TRANSPORTATION			
BEARING DETAILS			
JACKSON ST. OVER E.J. & E.R.R.			
F.A.U. ROUTE 0302 (U.S. RTE. 6) SEC. 33 V8-B6			
WILL COUNTY			
STA. 24 + 72.25			
DESIGNED BY: G.W.	CHECKED BY: J.J.	150FZ	
DRAWN BY: M.K.	DATE: 5-1-50		

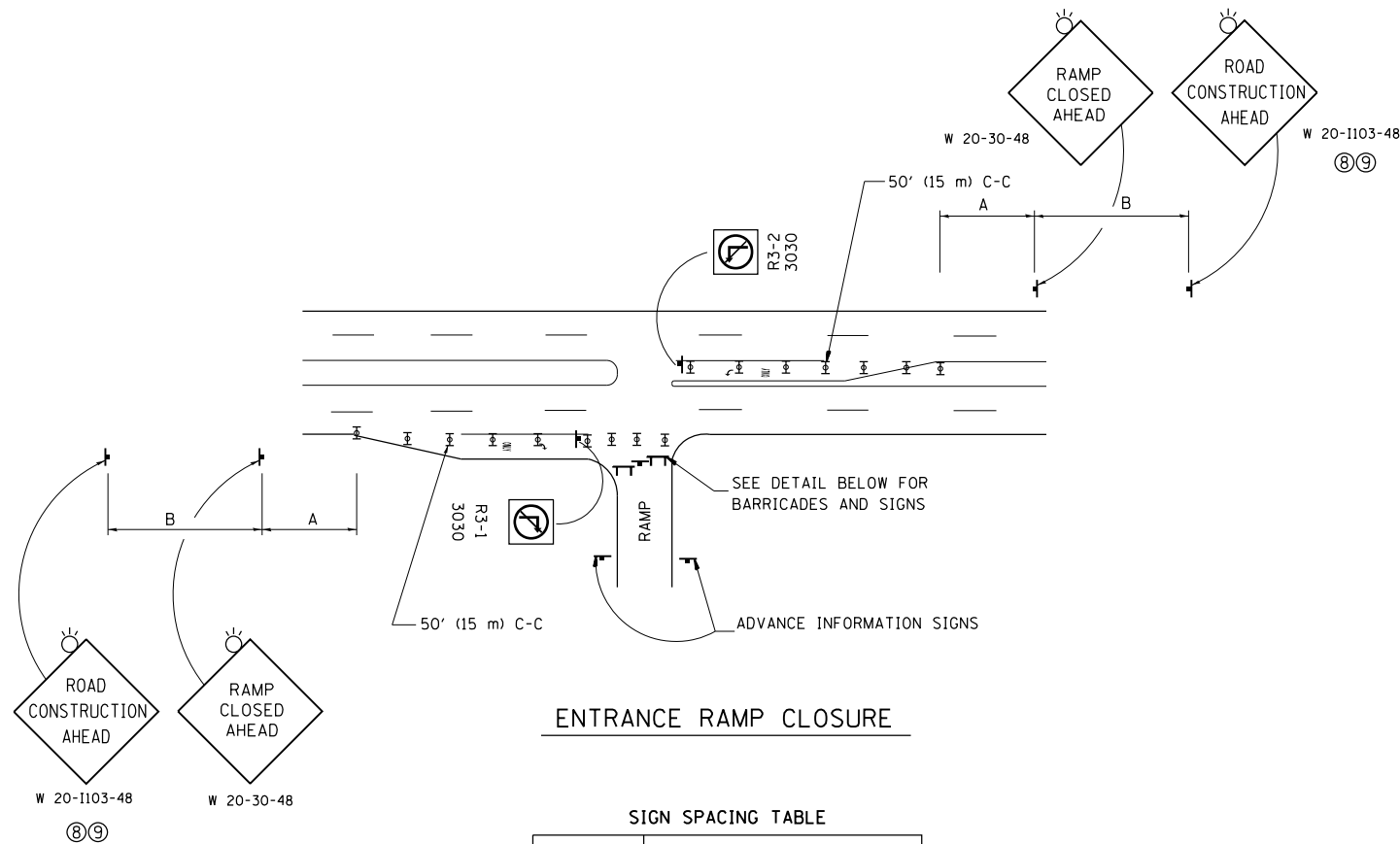
USER NAME = diaza	DESIGNED -	REVISED -
PLOT SCALE = 100.0000" / 1"	DRAWN -	REVISED -
PLOT DATE = 12/11/2017	CHECKED -	REVISED -
	DATE -	REVISED -

STATE OF ILLINOIS
DEPARTMENT OF TRANSPORTATION

LOC. 5) SN 099-0282
BEARING DETAILS
SCALE: SHEET OF SHEETS STA. TO STA.

F.A. RTE.	SECTION	COUNTY	TOTAL SHEETS	SHEET NO.
VAR.	2017-0568P	WILL	25	20
CONTRACT NO. 62F93				
ILLINOIS FED. AID PROJECT				

MODEL: D:\DRAWING\ILLINOIS\DOT\Documents\DOT - Offices\Bldg - 1\Projects\0122618\CADD\Drawings\0122618-01-01-01.dwg

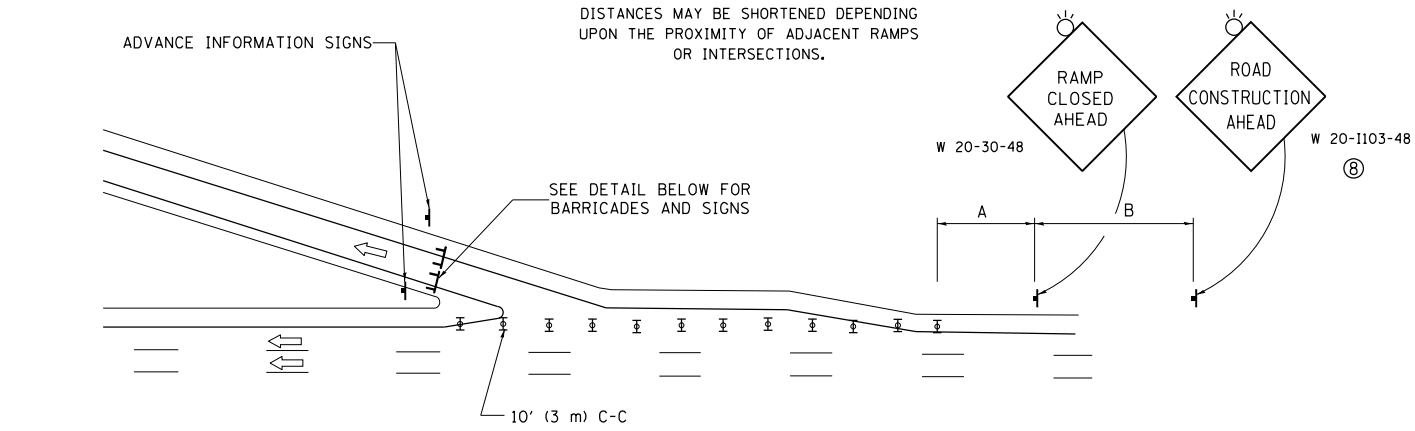


ENTRANCE RAMP CLOSURE

SIGN SPACING TABLE

FACILITY	DISTANCE BETWEEN SIGNS	
	A	B
EXPRESSWAY >24 HOURS	1000' (300 m)	1500' (450 m)
EXPRESSWAY <24 HOURS	500' (150 m)	500' (150 m)
ARTERIAL 55 MPH	500' (150 m)	500' (150 m)
ARTERIAL 50-45 MPH	350' (100 m)	350' (100 m)
ARTERIAL <45 MPH	200' (60 m)	200' (60 m)

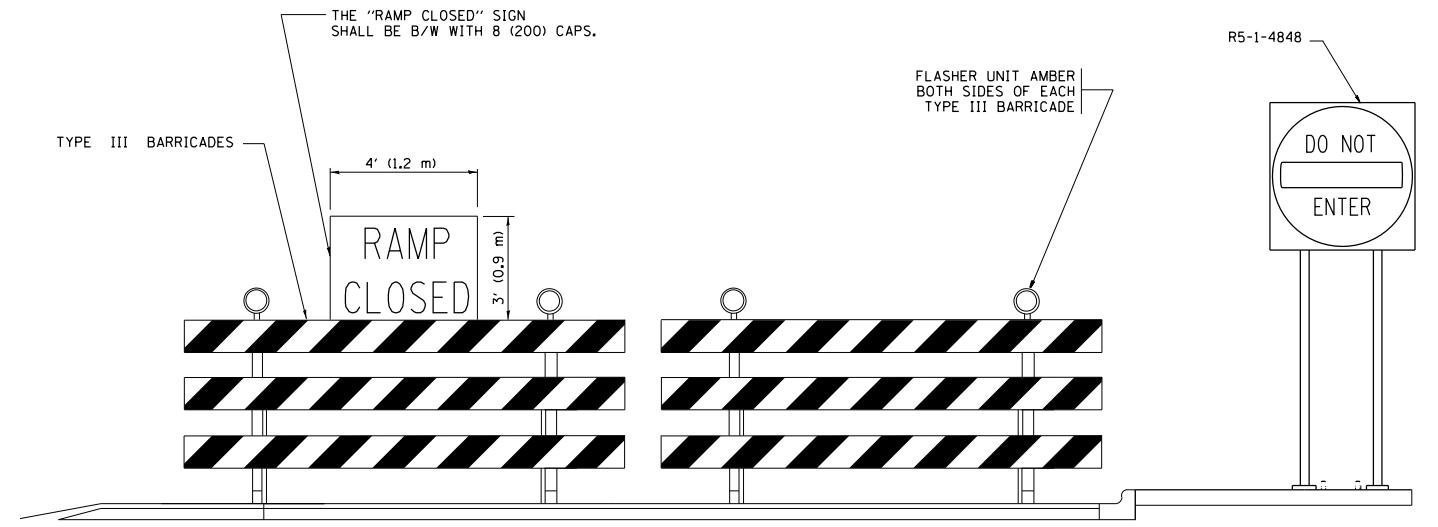
DISTANCES MAY BE SHORTENED DEPENDING UPON THE PROXIMITY OF ADJACENT RAMPS OR INTERSECTIONS.



EXIT RAMP CLOSURE

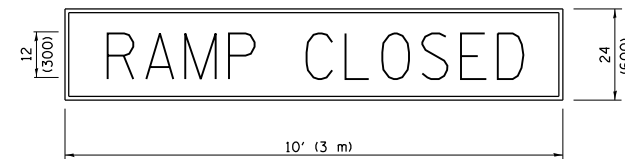
SYMBOLS

- ⊥ TYPE II BARRICADE OR DRUM
- ⊥ TYPE III BARRICADE WITH 2 FLASHING LIGHTS



DETAIL FOR REQUIRED BARRICADES & SIGNS

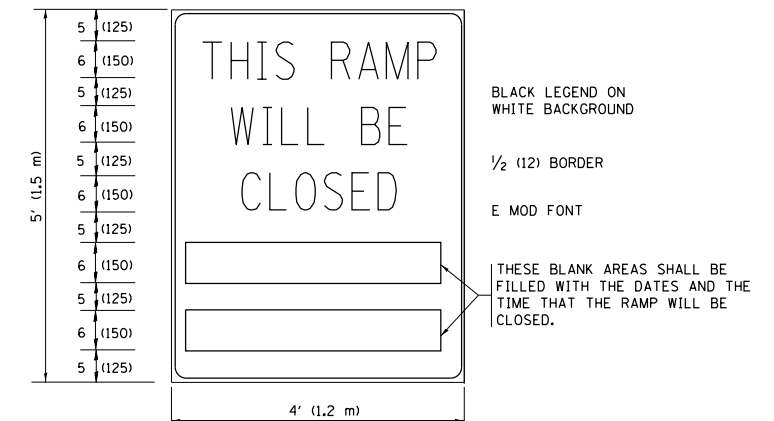
RAMP CLOSURE ADVANCE WARNING SIGN



BLACK LEGEND ON ORANGE BACKGROUND MOUNTED DIAGONALLY
E MOD FONT
1 (25) BORDER

THESE SIGNS ARE REQUIRED ON ALL THE EXIT GUIDE SIGNS FOR EXIT RAMPS THAT WILL BE CLOSED FOR MORE THAN FOUR (4) CONSECUTIVE DAYS.

RAMP CLOSURE ADVANCE INFORMATION SIGN



BLACK LEGEND ON WHITE BACKGROUND

1/2 (12) BORDER

E MOD FONT

THESE BLANK AREAS SHALL BE FILLED WITH THE DATES AND THE TIME THAT THE RAMP WILL BE CLOSED.

THESE SIGNS ARE REQUIRED ON BOTH SIDES OF THE RAMP, MINIMUM OF 1 WEEK IN ADVANCE OF THE CLOSURE.

THESE SIGNS SHALL BE FABRICATED AND PAID FOR ACCORDING TO THE TEMPORARY INFORMATION SIGNING SPECIAL PROVISION

GENERAL NOTES:

- ① CONES MAY BE SUBSTITUTED FOR DRUMS OR TYPE II BARRICADES DURING DAY OPERATIONS. CONES SHALL BE A MINIMUM OF 28 (700) HIGH.
- ② VERTICAL BARRICADES SHALL NOT BE USED FOR RAMP CLOSURES.
- ③ A FLAGGER SHALL BE POSITIONED AT EACH CLOSED RAMP THAT IS OPEN TO CONSTRUCTION VEHICLES, PRECEDED BY A W20-7 FLAGGER WARNING SIGN.
- ④ ALL ROUTE MARKERS AND TRAILBLAZER ASSEMBLIES WHICH DIRECT MOTORISTS TO A CLOSED ENTRANCE RAMP SHALL BE COVERED WHEN THE RAMP IS CLOSED FOR MORE THAN FOUR (4) DAYS.
- ⑤ THE SIGNING AND BARRICADING WHICH IS REQUIRED BY THIS DETAIL SHALL BE INCLUDED IN THE COST OF TRAFFIC CONTROL AND PROTECTION (EXPRESSWAYS).
- ⑥ AUTHORIZATION FROM THE DISTRICT'S BUREAU OF TRAFFIC IS REQUIRED FOR ALL RAMP CLOSURES.
- ⑦ THE RAMP CLOSURE ADVANCE INFORMATION SIGNS SHALL BE ERECTED IF THE CLOSURE TIME EXCEEDS TWENTY-FOUR (24) HOURS. ADDITIONAL ADVANCE WARNING SIGNS ON EXIT GUIDE SIGNING WILL BE REQUIRED FOR EXIT RAMP CLOSURES THAT EXCEED FOUR (4) DAYS IN LENGTH.
- ⑧ ROAD CONSTRUCTION AHEAD SIGNS MAY BE OMITTED WHEN THIS DETAIL IS USED IN CONJUNCTION WITH OTHER TRAFFIC CONTROL THAT ALREADY INCLUDES A ROAD CONSTRUCTION AHEAD SIGN.
- ⑨ ARTERIAL ROAD CONSTRUCTION AHEAD SIGNS SHALL BE INSTALLED ON THE LEFT SIDE OF TRAFFIC IF THE MEDIAN IS MORE THAN 10 FT WIDE.

ALL DIMENSIONS ARE IN INCHES (MILLIMETERS) UNLESS OTHERWISE SHOWN.

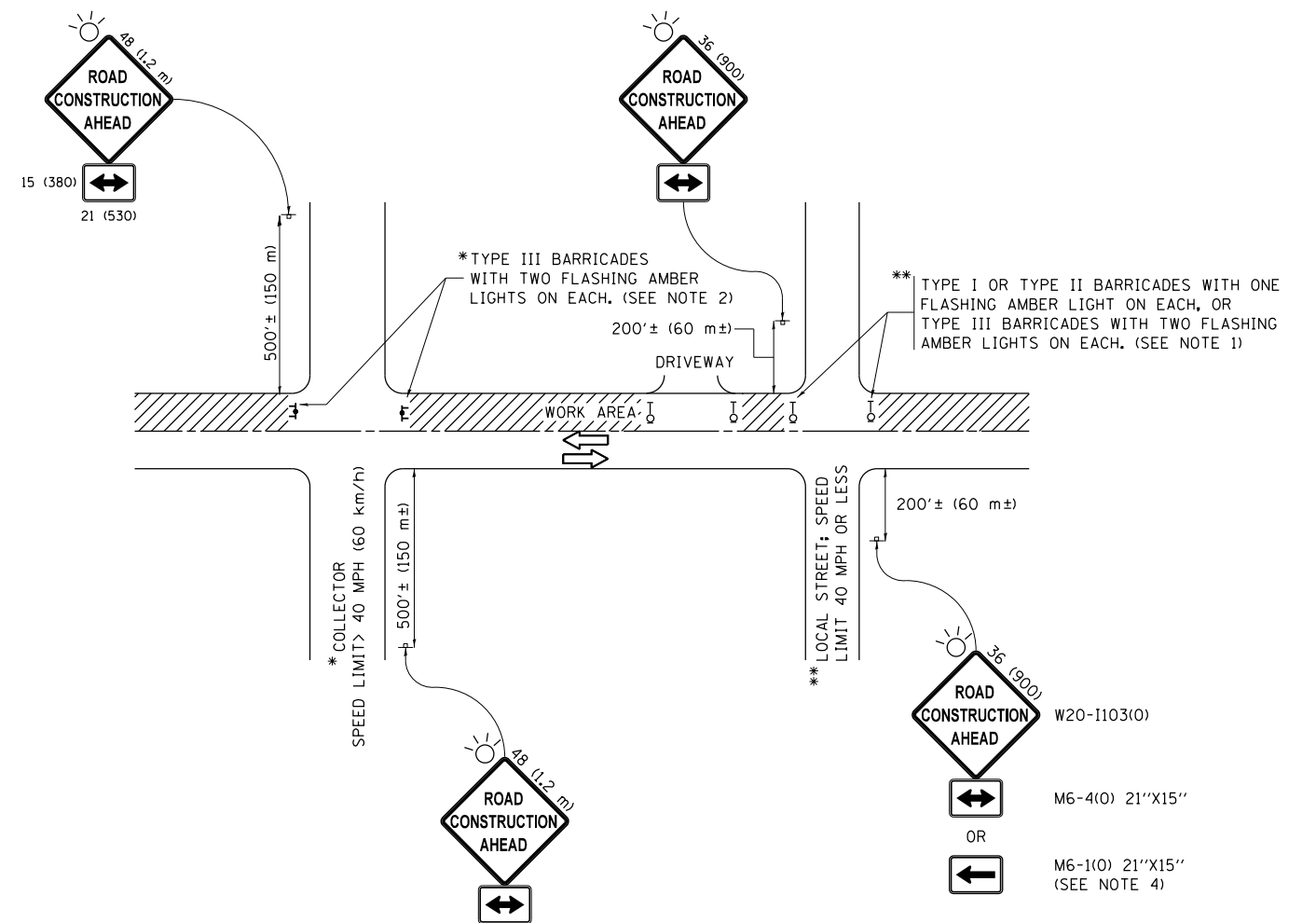
FILE NAME =	USER NAME = diazo	DESIGNED - D.W.S.	REVISED - S.P.B. 01-07
p:\1\084EBID\INTEG\illinois.gov\PI\DOT\Documents\DOT Offices\District 1\Projects\DI226\Browns\Design\DistStd.dgn		REVISED - S.P.B. 12-09	
Default	PLOT SCALE = 100.0000' / 1in.	CHECKED -	REVISED - M.D. 06-13
	PLOT DATE = 12/11/2017	DATE - 02-83	REVISED - M.D. 01-18

**STATE OF ILLINOIS
DEPARTMENT OF TRANSPORTATION**

**ENTRANCE AND EXIT RAMP
CLOSURE DETAILS**

SCALE: NONE SHEET 1 OF 1 SHEETS STA. TO STA.

F.A. RTE.	SECTION	COUNTY	TOTAL SHEETS	SHEET NO.
VAR.	2017-056BP	WILL	25	21
TC-08		CONTRACT NO. 62F93		
ILLINOIS FED. AID PROJECT				



NOTES:

1. SIDE ROAD WITH A SPEED LIMIT OF 40 MPH (60 km/h) OR LESS AS SHOWN ON THE DRAWING AND AS DIRECTED BY THE ENGINEER:
 - a) ONE "ROAD CONSTRUCTION AHEAD" SIGN 36 x 36 (900x900) WITH A FLASHER MOUNTED ON IT APPROXIMATELY 200' (60 m) IN ADVANCE OF THE MAIN ROUTE.
 - b) THE CLOSED PORTION OF THE MAIN ROUTE SHALL BE PROTECTED BY BLOCKING WITH TYPE I, TYPE II OR TYPE III BARRICADES, 1/3 OF THE CROSS SECTION OF THE CLOSED PORTION.
2. SIDE ROAD WITH A SPEED LIMIT GREATER THAN 40 MPH (60 km/h) AS SHOWN ON THE DRAWING AND AS DIRECTED BY THE ENGINEER:
 - a) ONE "ROAD CONSTRUCTION AHEAD" SIGN 48 x 48 (1.2 m x 1.2 m) WITH A FLASHER MOUNTED ON IT APPROXIMATELY 500' (150 m) IN ADVANCE OF THE MAIN ROUTE.
 - b) THE CLOSED PORTION OF THE MAIN ROUTE SHALL BE PROTECTED BY BLOCKING WITH TYPE III BARRICADES, 1/2 OF THE CROSS SECTION OF THE CLOSED PORTION.
3. CONES MAY BE SUBSTITUTED FOR BARRICADES OR DRUMS AT HALF THE SPACING DURING DAY OPERATIONS. CONES SHALL BE A MINIMUM OF 28 (710) IN HEIGHT.
4. WHEN THE SIDE ROAD LIES BETWEEN THE BEGINNING OF THE MAINLINE SIGNING AND THE WORK ZONE, A SINGLE HEADED ARROW (M6-1) SHALL BE USED IN LIEU OF THE DOUBLE HEADED ARROW (M6-4).
5. WHEN WORK IS BEING PERFORMED ON A SIDE ROAD OR DRIVEWAY, FOLLOW THE APPLICABLE STANDARD(S). THE DIRECTIONAL ARROW (M6-1 OR M6-4) SHALL BE COVERED OR REMOVED WHEN NO LONGER CONSISTENT WITH THE TRAFFIC CONTROL SET-UP.
6. ADVANCE WARNING SIGNS ARE TO BE OMITTED ON DRIVEWAYS UNLESS OTHERWISE SPECIFIED IN THE PLANS OR BY THE ENGINEER.
7. THE TRAFFIC CONTROL AND PROTECTION FOR SIDE ROADS, INTERSECTIONS, AND DRIVEWAYS SHALL BE INCLUDED IN THE COST OF SPECIFIED TRAFFIC CONTROL STANDARDS OR ITEMS.

All dimensions are in inches (millimeters) unless otherwise shown.

FILE NAME =	USER NAME = diazo	DESIGNED - L.H.A.	REVISED - A. HOUSEH 10-15-96
p:\11\084EBIDINTEG\illinois.gov\PIWIDOT\Documents\IDOT Offices\District 1\Projects\DI226\BROWN\State\Design\DistStd.dgn			REVISED - T. RAMMACHER 01-06-00
Default	PLOT SCALE = 100.0000' / in.	CHECKED -	REVISED - A. SCHUETZE 07-01-13
	PLOT DATE = 12/11/2017	DATE - 06-89	REVISED - A. SCHUETZE 09-15-16

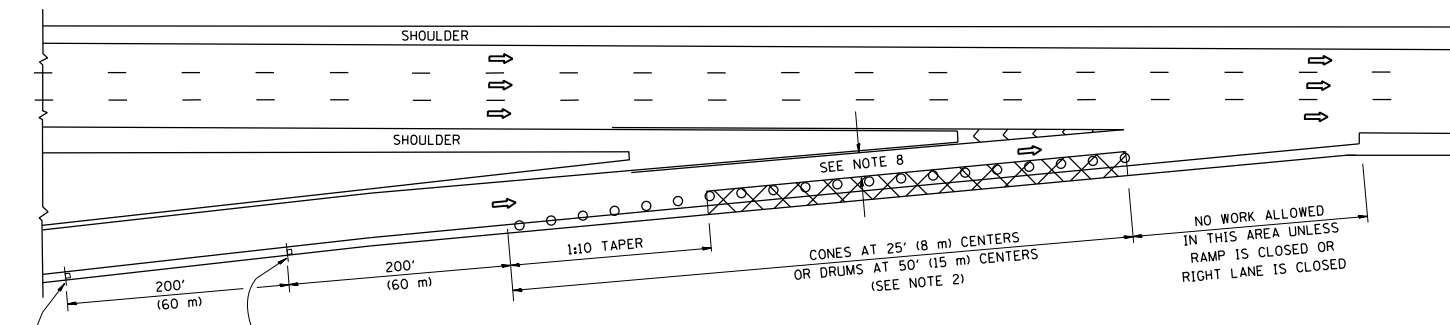
**STATE OF ILLINOIS
DEPARTMENT OF TRANSPORTATION**

**TRAFFIC CONTROL AND PROTECTION FOR
SIDE ROADS, INTERSECTIONS, AND DRIVEWAYS**

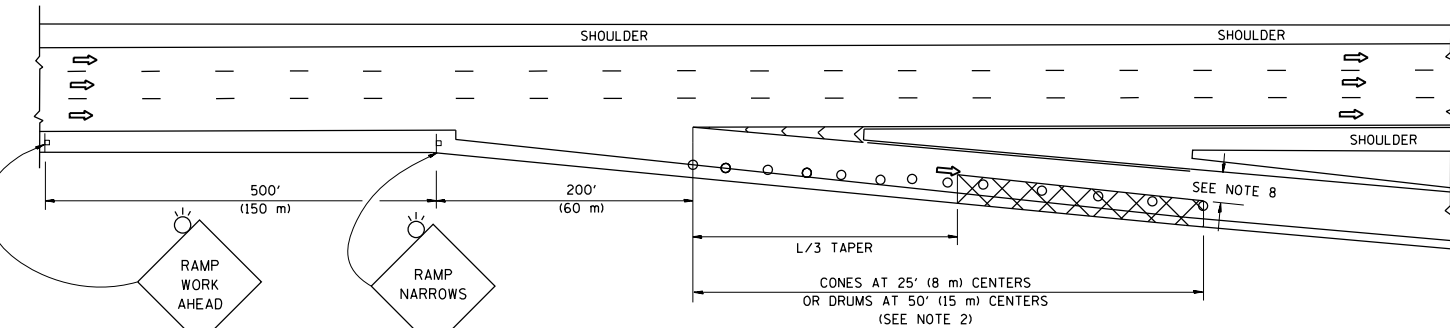
SCALE: NONE SHEET 1 OF 1 SHEETS STA. TO STA.

F.A. RTE.	SECTION	COUNTY	TOTAL SHEETS	SHEET NO.
VAR.	2017-056BP	WILL	25	23
TC-10		CONTRACT NO. 62F93		
ILLINOIS FED. AID PROJECT				

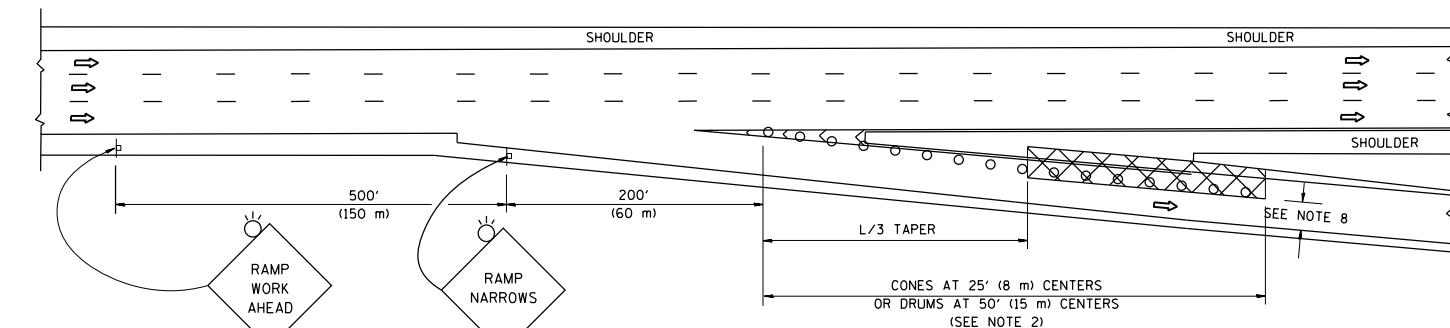
PARTIAL RAMP CLOSURE DETAILS



TYPICAL ENTRANCE RAMP



TYPICAL EXIT RAMP



TYPICAL EXIT RAMP

SYMBOLS

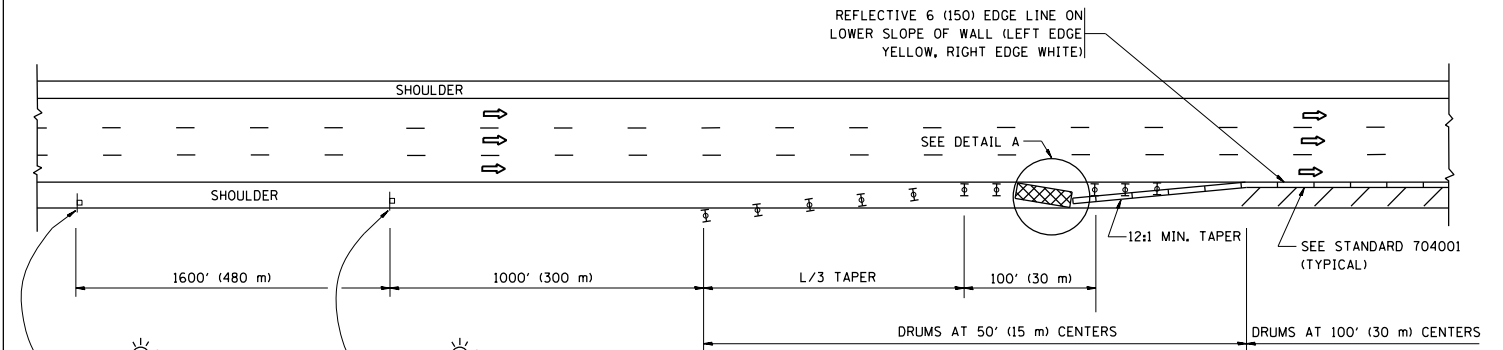
- ACTIVE WORK AREA
- SIGN ON PORTABLE OR PERMANENT SUPPORT
- FLAGGER WITH CONTROL SIGN
- TYPE II BARRICADE OR DRUM
- CONE, DRUM OR BARRICADE
- IMPACT ATTENUATOR OF TYPE AND TEST LEVEL SPECIFIED

GENERAL NOTES

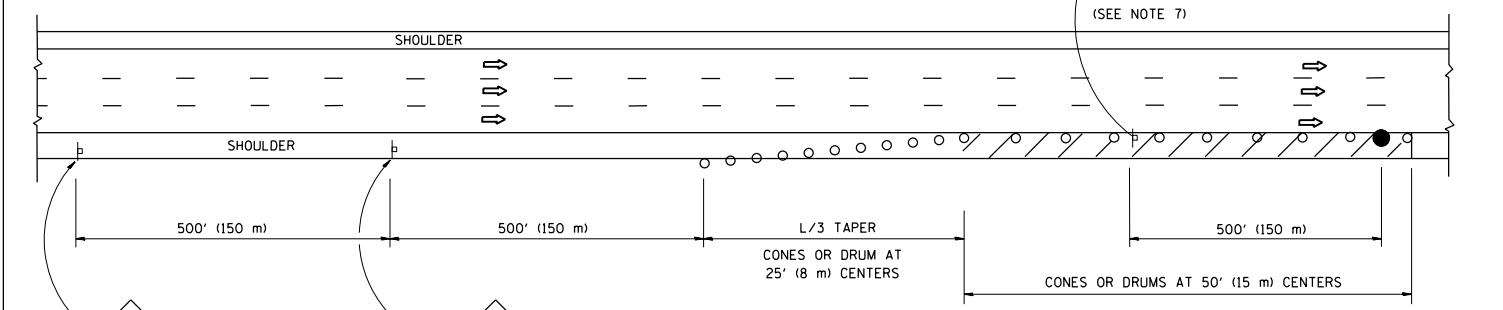
1. THE "L" DISTANCE EQUALS:

SPEED LIMIT	FORMULAS
45 mph (80 km/h)	METRIC ENGLISH
OR GREATER:	L=0.65(W)(S) L=(W)(S)
W = WIDTH OF OFFSET IN FEET (METERS)	
S = NORMAL POSTED SPEED MPH (KM/H)	
2. TYPE II BARRICADES OR DRUMS ARE REQUIRED FOR ALL NIGHTTIME CLOSURES. TYPE II BARRICADES OR DRUMS WITH MONODIRECTIONAL STEADY BURN LIGHTS ARE REQUIRED FOR DELINEATING OBSTACLES, EXCAVATIONS, OR HAZARDS EXCEEDING 100 FT (30m) IN LENGTH AT NIGHT.
3. ALL SIGNS SHALL BE POST MOUNTED IF THE CLOSURE TIME EXCEEDS FOUR DAYS.
4. FLASHING LIGHTS SHALL BE USED DURING THE HOURS OF DARKNESS AND SHALL BE INSTALLED ABOVE THE FIRST TWO SETS OF SIGNS.
5. THE IMPACT ATTENUATOR, TEMPORARY IS NOT REQUIRED WHEN THE TEMPORARY CONCRETE BARRIER WALL IS PROTECTED BY OR IS TIED INTO THE EXISTING GUARDRAIL. IF OFFSET IS LESS THAN 5 FEET USE NARROW USE TYPE DEVICE TO MEET NCHRP350/MASH.
6. AUTHORIZATION FROM THE DISTRICT'S BUREAU OF TRAFFIC IS REQUIRED FOR ALL FREEWAY CLOSURES.
7. THE FLAGGER AND FLAGGER SIGN ARE REQUIRED AT THE ABOVE WORK SITES WHEN:
 - a. FOUR OR MORE WORK VEHICLES ENTER THE TRAFFIC LANES IN A ONE HOUR PERIOD.
 - b. THE WORK AVTIVITY REQUIRES FREQUENT ENCROACHMENT INTO THE LANE OPEN TO TRAFFIC.
 THE FLAGGER SHALL BE STATIONED APPROXIMATELY 100' (30 m) TO 200' (60 m) IN ADVANCE OF THE WORKERS.
8. 12' MIN. WIDTH TANGENT SECTION
16' MIN. WIDTH CURVE SECTION.

SHOULDER CLOSURE DETAILS

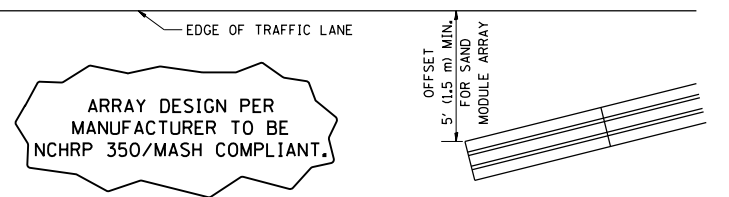


PERMANENT SHOULDER CLOSURE



DAYTIME SHOULDER CLOSURE

- THIS DETAIL IS USED WHERE:
1. VEHICLES, EQUIPMENT, WORKERS OR THEIR ACTIVITIES ENCROACH IN AN AREA CLOSER THAN 15' (4.5 m) TO THE EDGE OF PAVEMENT FOR A PERIOD IN EXCESS OF 15 MINUTES.



DETAIL "A"
IMPACT ATTENUATOR, TEMPORARY
(SEE NOTE 5)

ALL DIMENSIONS ARE IN INCHES (MILLIMETERS) UNLESS OTHERWISE SHOWN.

FILE NAME =	USER NAME = diazo	DESIGNED -	REVISED - S.P.B. 01-07
pw:\IL\084EBID\INTEG\illinois.gov\PI\DOT\Documents\DOT Offices\District 1\Projects\DI226\Drawings\Design\DWG\Std.dgn		DESIGNED -	REVISED - S.P.B. 12-09
Default	PLOT SCALE = 100.0000' / in.	CHECKED -	REVISED - M.D. 06-13
	PLOT DATE = 12/11/2017	DATE -	REVISED - M.D. 01-18

STATE OF ILLINOIS
DEPARTMENT OF TRANSPORTATION

TRAFFIC CONTROL DETAILS FOR FREEWAY
SHOULDER CLOSURES AND PARTIAL RAMP CLOSURES

SCALE: NONE SHEET 1 OF 1 SHEETS STA. TO STA.

F.A. RTE.	SECTION	COUNTY	TOTAL SHEETS	SHEET NO.
VAR.	2017-056BP	WILL	25	24
TC-17		CONTRACT NO. 62F93		
ILLINOIS FED. AID PROJECT				



NOTES:

1. USE BLACK LETTERING ON ORANGE BACKGROUND.
2. ERECT SIGNS IN ADVANCE OF THE LOCATION FOR THE "ROAD CONSTRUCTION AHEAD" SIGN AT LOCATIONS AS DIRECTED BY THE ENGINEER.
3. ERECT SIGN ① WITH INSTALLED PANEL ② ONE WEEK PRIOR TO THE START OF CONSTRUCTION.
4. REMOVE PANEL ② SOON AFTER THE START OF CONSTRUCTION.
5. SEE SPECIAL PROVISION FOR "TEMPORARY INFORMATION SIGNING" FOR ADDITIONAL INFORMATION.
6. ONE SIGN ASSEMBLY EQUALS 25.70 SQ. FT. (2.3 SQ. M.)
7. SHALL BE PAID FOR AS TEMPORARY INFORMATION SIGNING.

ALL DIMENSIONS ARE IN INCHES (MILLIMETERS) UNLESS OTHERWISE SHOWN.

FILE NAME =	USER NAME = diazo	DESIGNED -	REVISED - R. MIRS 09-15-97	STATE OF ILLINOIS DEPARTMENT OF TRANSPORTATION	ARTERIAL ROAD INFORMATION SIGN	F.A. RTE.	SECTION	COUNTY	TOTAL SHEETS	SHEET NO.
p:\11\084EBIDINTEG.illinois.gov\PIWIDOT\Documents\DOT Offices\District 1\Projects\DI226\Drawings\Design\DistStd.dgn		REVISED - R. MIRS 12-11-97	REVISED - T. RAMMACHER 02-02-99			VAR.	2017-056BP	WILL	25	25
PLOT SCALE = 100.0000' / 1in.	CHECKED -	REVISED - C. JUCIUS 01-31-07				TC-22		CONTRACT NO. 62F93		
PLOT DATE = 12/11/2017	DATE -					SCALE: NONE	SHEET NO. 1 OF 1 SHEETS	STA.	TO STA.	FED. ROAD DIST. NO. 1 ILLINOIS FED. AID PROJECT