

F.A.S. RTE.	SECTION	COUNTY	TOTAL SHEETS	SHEET NO.
1707	*	**	20	1

ILLINOIS CONTRACT NO. 74816
 * D7 HMA SAFETY SHLD 2018-3
 ** CUMBERLAND, CLARK

D-97-003-18



03-09-2018 LETTING ITEM 058

STATE OF ILLINOIS
 DEPARTMENT OF TRANSPORTATION
 DIVISION OF HIGHWAYS
**PROPOSED
 HIGHWAY PLANS**

FOR INDEX OF SHEETS, SEE SHEET NO. 2

STATION EQUATION:
 STA 856+51 BK = STA 2034+04.7 AH

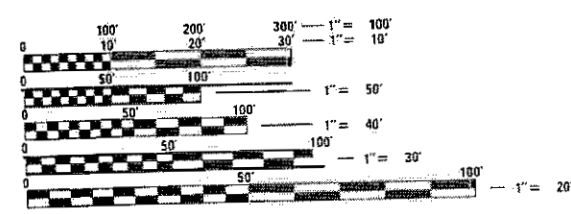
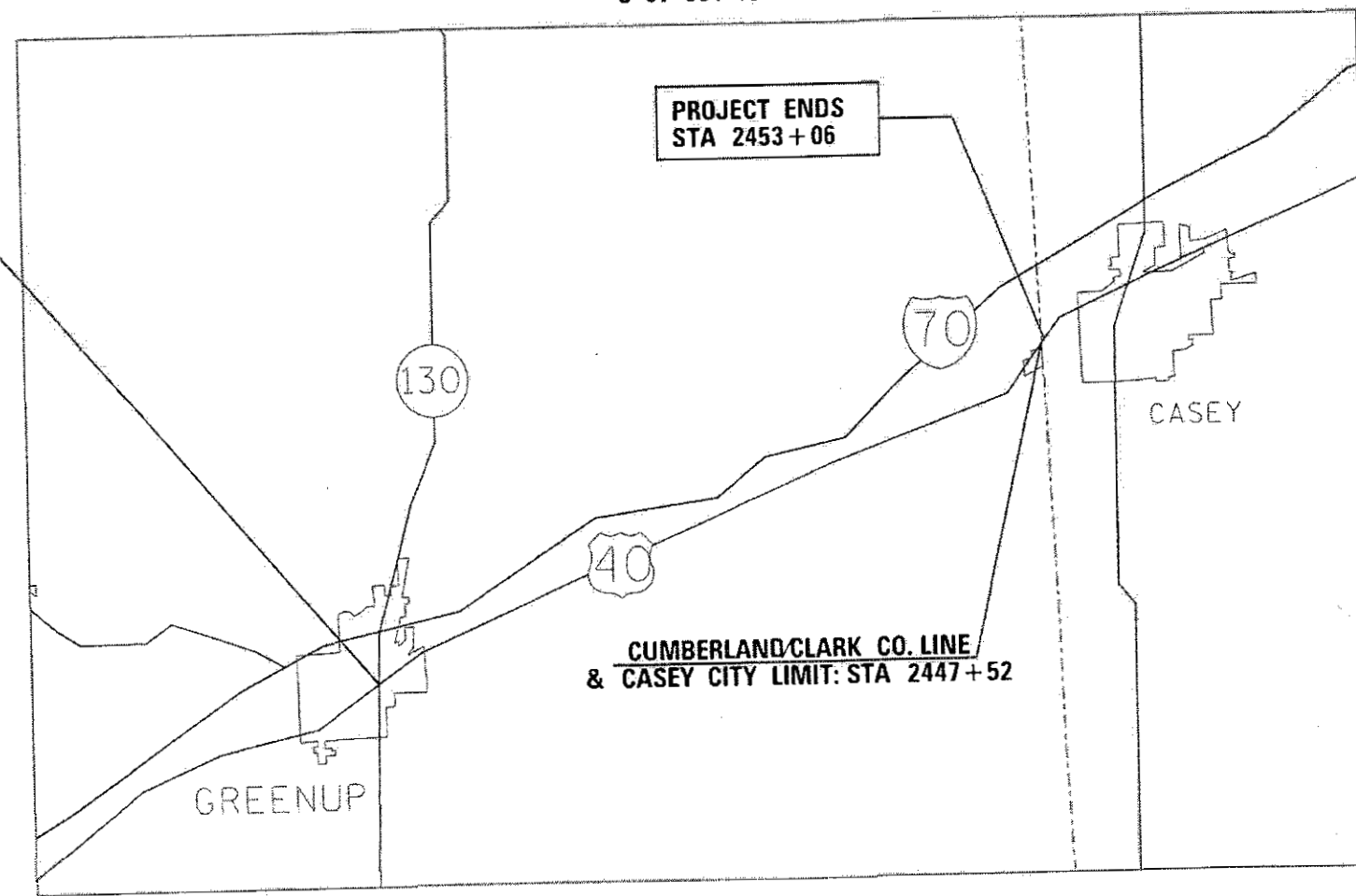
ADT (2015) = 2,250

FAS ROUTE 1707 (US 40)
 SECTION D7 SAFETY SHLD 2018-3
 PROJECT HSIP-0HWR(156)
 SAFETY SHOULDER
 CUMBERLAND, CLARK COUNTIES

C-97-004-18

PROJECT BEGINS
 STA 830+00

PROJECT ENDS
 STA 2453+06



FULL SIZE PLANS HAVE BEEN PREPARED USING STANDARD ENGINEERING SCALES. REDUCED SIZED PLANS WILL NOT CONFORM TO STANDARD SCALES. IN MAKING MEASUREMENTS ON REDUCED PLANS, THE ABOVE SCALES MAY BE USED.

J.U.L.I.E.
 JOINT UTILITY LOCATION INFORMATION FOR EXCAVATION
 1-800-892-0123
 OR 811

PROJECT ENGINEER: DEBRA BARRETT
 PROJECT MANAGER: BRIAN BIERMAN

GROSS LENGTH = 44,552.3 FT. = 8.438 MILES
 NET LENGTH = 44,552.3 FT. = 8.438 MILES

CONTRACT NO. 74816

STATE OF ILLINOIS
 DEPARTMENT OF TRANSPORTATION
 DIVISION OF HIGHWAYS

SUBMITTED DECEMBER 15, 2017

John M. Scallia
 DEPUTY DIRECTOR OF HIGHWAYS, REGION ENGINEER

Feb 20 2018
 ENGINEER OF DESIGN AND ENVIRONMENT

David L. Ch...
 DIRECTOR OF HIGHWAYS, CHIEF ENGINEER 2

PRINTED BY THE AUTHORITY
 OF THE STATE OF ILLINOIS

GENERAL NOTES

THE CONTRACTOR SHALL PROVIDE INTERNET ACCESS TO THE HOT-MIX ASPHALT PLANT QUALITY CONTROL LAB SO THAT HOT-MIX ASPHALT PLANT REPORTS CAN BE E-MAILED TO THE DISTRICT HEADQUARTERS. THIS WORK SHALL BE INCLUDED IN THE COST OF HOT-MIX ASPHALT ITEMS.

ALL EXCESS MATERIAL FROM THE EXCAVATING AND GRADING EXISTING SHOULDERS SHALL BECOME THE PROPERTY OF I.D.O.T. AND SHALL BE HAULED TO AN I.D.O.T. STORAGE AREA. HAULING THE EXCESS MATERIAL SHALL NOT BE PAID FOR SEPARATELY BUT SHALL BE INCLUDED IN THE COST OF EXCAVATING AND GRADING EXISTING SHOULDERS. THE STORAGE AREA IS AT BIG VALLEY WHICH IS APPROXIMATELY 2 MILES WEST OF IL 130 ON THE SOUTH SIDE OF US 40 NEAR GREENUP. THE MAINTENANCE FIELD ENGINEER, DAVE BUZZARD, SHALL BE CONTACTED AT 217-342-8274 ONE WEEK PRIOR TO DELIVERY OF THE EXCESS MATERIAL. THE CONTRACTOR SHALL PROVIDE A LOADER TO STOCKPILE THE MATERIAL.

HMA SHOULDERS SHALL BE OMITTED FROM LOCATIONS WHERE HMA SHOULDERS ALREADY EXISTS; HOWEVER RUMBLE STRIPS SHALL BE CONSTRUCTED AT THESE LOCATIONS.

THE ENGINEER SHALL CHECK THE DEPTH AT EACH BOX CULVERT TO ENSURE 8" CLEARANCE. THE ENGINEER SHALL DETERMINE THE DEPTH TO MILL OR TO OMIT THE AREA COMPLETELY OF HMA SHOULDER.

THE MATERIAL USED FOR AGGREGATE WEDGE SHOULDER, TYPE B SHALL BE CRUSHED STONE.

OMIT RUMBLE STRIPS ON ALL SIDEROADS, PRIVATE, AND COMMERCIAL ENTRANCES AT RADIUS RETURNS. OMIT RUMBLE STRIPS AT MAILBOX TURNOUTS 60' BOTH SIDES OF THE MAILBOX OR AS DETERMINED BY THE ENGINEER. THESE OMISSIONS WILL NOT BE MEASURED FOR PAYMENT.

OMIT HOT-MIX ASPHALT SHOULDERS, 8" ON ALL HMA AND PCC SIDEROADS, AND HMA AND PCC ENTRANCES. FIELD ENTRANCES WITH HMA APRONS WILL NOT BE OMITTED FROM HOT-MIX ASPHALT SHOULDERS, 8".

THE FOLLOWING MIXTURE REQUIREMENTS ARE APPLICABLE TO THIS PROJECT:

APPLICATION	AC/PG	DESIGN AIR VOIDS	MIXTURE COMPOSITION	FRICTION AGGREGATE	TESTING PARAMETER
HMA SHOULDERS 8" (TOP 2" LIFT)	PG 64-22	4.0% @ N70	IL-9.5	MIXTURE C	QC/QA
HMA SHOULDERS 8" (BOTTOM 6" LIFT)	PG 64-22	4.0% @ N70	IL-19.0	N/A	QC/QA

<u>SHEET NO</u>	<u>TITLE</u>
1	COVER SHEET
2	GENERAL NOTES, INDEX OF SHEETS & LIST OF STANDARDS
3	SUMMARY OF QUANTITIES
4	TYPICAL SECTION
5	SCHEDULE OF QUANTITIES
6-20	PLAN SHEETS

THE FOLLOWING STANDARDS ARE A PART OF THESE PLANS AND ARE INCLUDED FOLLOWING THE LAST NUMBERED SHEET OF THE PLANS.

<u>STANDARD NO</u>	<u>DESCRIPTION</u>
000001-06	STANDARD SYMBOLS, ABBREVIATIONS AND PATTERNS
001006	DECIMAL OF AN INCH AND OF A FOOT
642006	SHOULDER RUMBLE STRIPS, 8 in.
701001-02	OFF-ROAD OPERATIONS, 2L, 2W, MORE THAN 15' AWAY
701006-05	OFF-ROAD OPERATIONS, 2L, 2W, 15' TO 24" FROM PAVEMENT EDGE
701011-04	OFF-ROAD MOVING OPERATIONS, 2L, 2W, DAY ONLY
701301-04	LANE CLOSURE, 2L, 2W, SHORT TIME OPERATIONS
701311-03	LANE CLOSURE 2L, 2W MOVING OPERATIONS - DAY ONLY
701326-04	LANE CLOSURE, 2L, 2W, PAVEMENT WIDENING, FOR SPEEDS >= 45 MPH
701901-07	TRAFFIC CONTROL DEVICES

MODEL: Default
FILE NAME: P:\IL08\BID\DOT\Illinois.gov\PIVDOT\Documents\DOT_Offices\District 7\Projects\171816\CADD\DATA\CAD\Sheet\171816-PC-GENERALNOTES.dgn

USER NAME = steffemk	DESIGNED -	REVISED -
	DRAWN -	REVISED -
PLOT SCALE = 100,0000' / in.	CHECKED -	REVISED -
PLOT DATE = 12/15/2017	DATE -	REVISED -

**STATE OF ILLINOIS
DEPARTMENT OF TRANSPORTATION**

**INDEX OF SHEETS, GENERAL NOTES
& LIST OF STANDARDS**

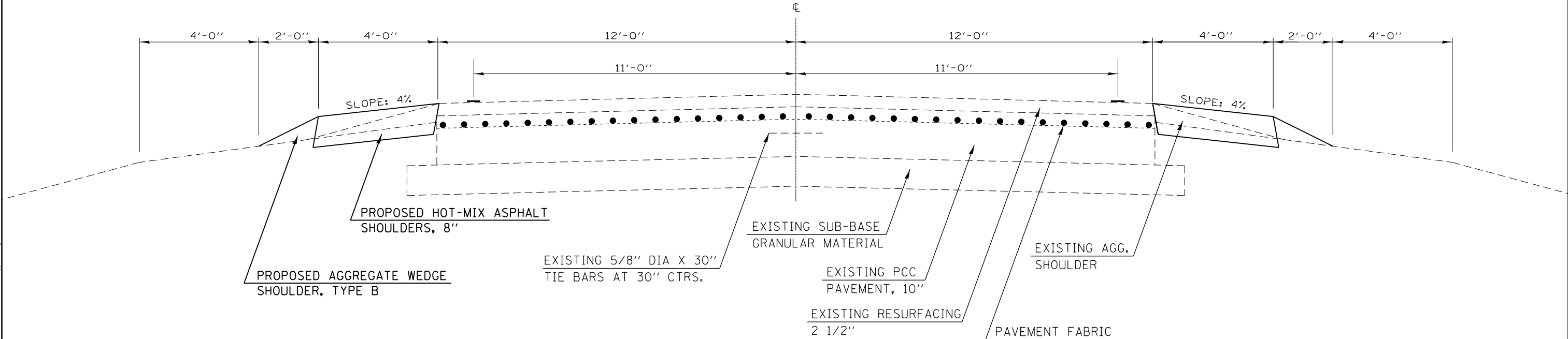
SCALE: SHEET OF SHEETS STA. TO STA.

F.A.S. RTE.	SECTION	COUNTY	TOTAL SHEETS	SHEET NO.
1707	*	**	20	2
CONTRACT NO. 74816				

* D7 HMA SAFETY SHLD 2018-3

** CUMBERLAND, CLARK

TYPICAL CROSS SECTION



MODEL: Default
 FILE: \\nas01.psu.edu\BEBID\NTEC\Illinois\pwr\DOT\Documents\DOT_Offices\Director_7\Projects\174816\CADD\Drawings\174816-174816-174816.dgn

USER NAME = steffemk	DESIGNED -	REVISED -
	DRAWN -	REVISED -
PLOT SCALE = 100,0000' / in.	CHECKED -	REVISED -
PLOT DATE = 12/15/2017	DATE -	REVISED -

STATE OF ILLINOIS
DEPARTMENT OF TRANSPORTATION

TYPICAL SECTION			
SCALE:	SHEET	OF SHEETS	STA. TO STA.

F.A.S. RTE.	SECTION	COUNTY	TOTAL SHEETS	SHEET NO.
1707	*	**	20	4
CONTRACT NO. 74816				

* D7 HMA SAFETY SHLD 2018-3
 ** CUMBERLAND, CLARK

SHOULDER SCHEDULE

STATION TO STATION			SIDE	LENGTH	EXCAVATING AND GRADING EXISTING SHOULDER UNIT	AGGREGATE WEDGE SHOULDER, TYPE B TON	HOT-MIX ASPHALT SHOULDERS, 8" SQ YD	SHOULDER RUMBLE STRIPS, 8 INCH FOOT
				FEET				
830+00	TO	856+51	LT & RT	2651	45	84	1978	4451
2034+04.7	TO	2037+00	LT & RT	295	5	10	228	514
2037+00	TO	2069+00	LT & RT	3200	57	107	2548	5654
2069+00	TO	2100+00	LT & RT	3100	55	103	2446	5385
2100+00	TO	2132+00	LT & RT	3200	58	109	2595	5681
2132+00	TO	2163+00	LT & RT	3100	59	109	2603	5683
2163+00	TO	2195+00	LT & RT	3200	60	112	2673	5915
2195+00	TO	2226+00	LT & RT	3100	57	109	2551	5721
2226+00	TO	2258+00	LT & RT	3200	61	115	2696	6066
2258+00	TO	2289+00	LT & RT	3100	54	94	2381	5275
2289+00	TO	2321+00	LT & RT	3200	58	109	2557	5705
2321+00	TO	2352+00	LT & RT	3100	59	113	2643	5946
2352+00	TO	2384+00	LT & RT	3200	62	117	2742	6170
2384+00	TO	2415+00	LT & RT	3100	62	118	2756	6200
2415+00	TO	2447+00	LT & RT	3200	62	118	2755	6199
2447+00	TO	2447+78	LT & RT	78	2	3	69	156
CUMBERLAND COUNTY TOTALS =					815	1530	36220	80721
2447+78	TO	2453+06	LT & RT	528	11	20	469	1056
CLARK COUNTY TOTALS =					11	20	469	1056
PROJECT TOTALS =					826	1550	36690	81777

MODEL: Default
FILE: \\hmc\p\ul\08\EBID\NTEC\Illinois\gov\PIV\DOT\Documents\1\DOT_Offices\Director_7\Projects\174816\CAD\data\CAD\papers\174816-shld-schedule.dgn

USER NAME = steffenmk	DESIGNED -	REVISED -
	DRAWN -	REVISED -
PLOT SCALE = 100.0000' / in.	CHECKED -	REVISED -
PLOT DATE = 12/15/2017	DATE -	REVISED -

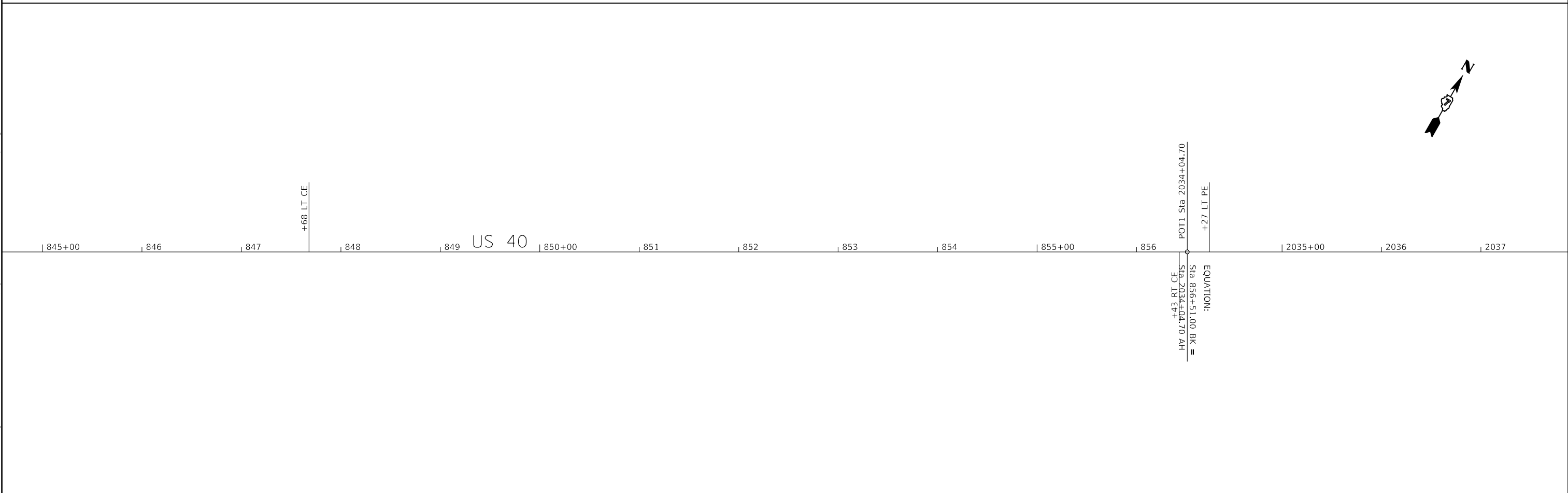
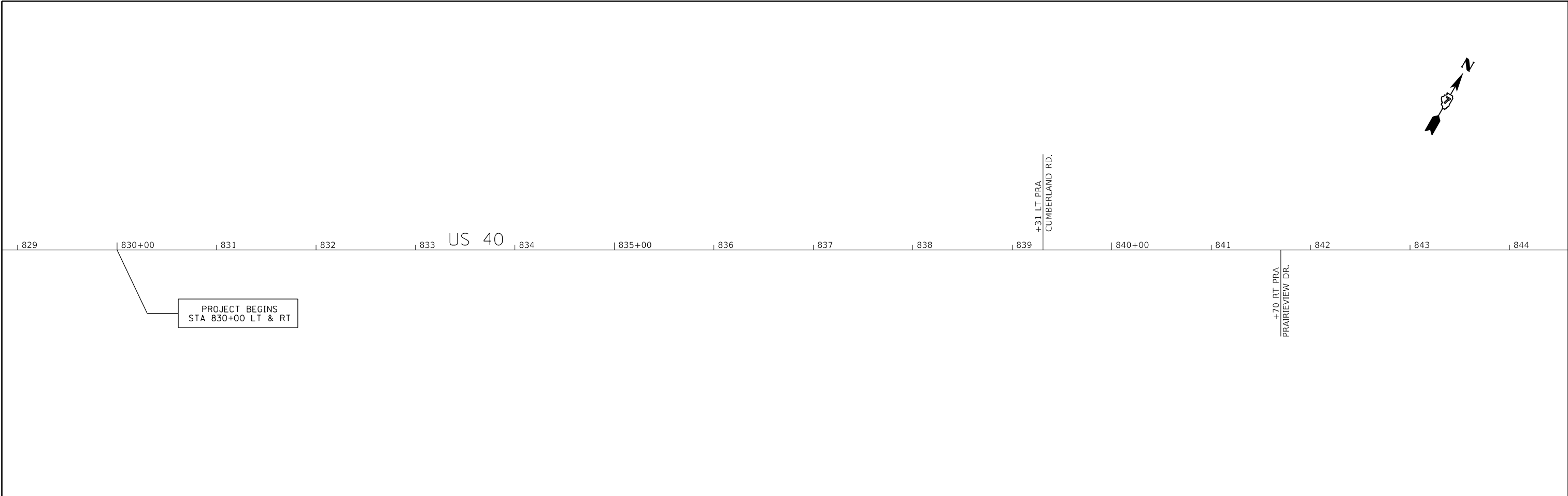
STATE OF ILLINOIS
DEPARTMENT OF TRANSPORTATION

SCHEDULES			
SCALE:	SHEET	OF	SHEETS
	STA.	TO	STA.

F.A.S. RTE.	SECTION	COUNTY	TOTAL SHEETS	SHEET NO.
1707	*	**	20	5
CONTRACT NO. 74816				

* D7 HMA SAFETY SHLD 2018-3

** CUMBERLAND, CLARK



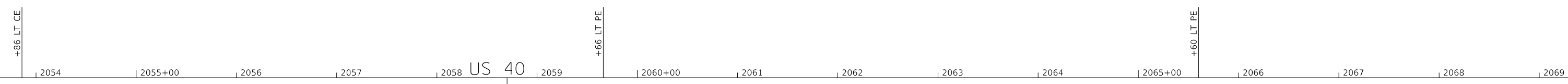
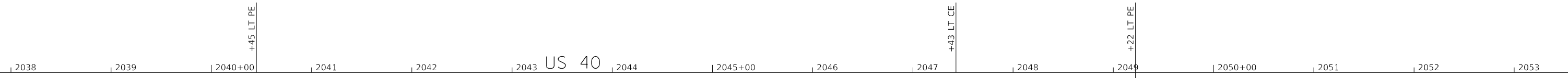
MODEL: Default
 FILE NAME: P:\1108\B&E\BIDD\ITEC\Illinois.gov\PI\DOT\Documents\DOT Offices\District 7\Projects\174816\CAD\Drawings\174816-PL-CLARK.dgn

USER NAME = steffenmk	DESIGNED -	REVISED -
	DRAWN -	REVISED -
PLOT SCALE = 100,0000 ' / in.	CHECKED -	REVISED -
PLOT DATE = 12/15/2017	DATE -	REVISED -

**STATE OF ILLINOIS
DEPARTMENT OF TRANSPORTATION**

PLAN SHEETS			
SCALE:	SHEET	OF	SHEETS
	STA.	TO	STA.

F.A.S. RTE.	SECTION	COUNTY	TOTAL SHEETS	SHEET NO.
1707	*	**	20	6
			CONTRACT NO. 74816	



MODEL: Default
 FILE NAME: P:\1108\B&E\BIDD\NTEC\Illinois.gov\PWIDOT\Documents\DOT_Offices\Director\7\Projects\74816\CAD\Drawn\CAD\Drawn\74816-Plan.dgn

USER NAME = steffenmk	DESIGNED -	REVISED -
	DRAWN -	REVISED -
PLOT SCALE = 100.0000' / in.	CHECKED -	REVISED -
PLOT DATE = 12/15/2017	DATE -	REVISED -

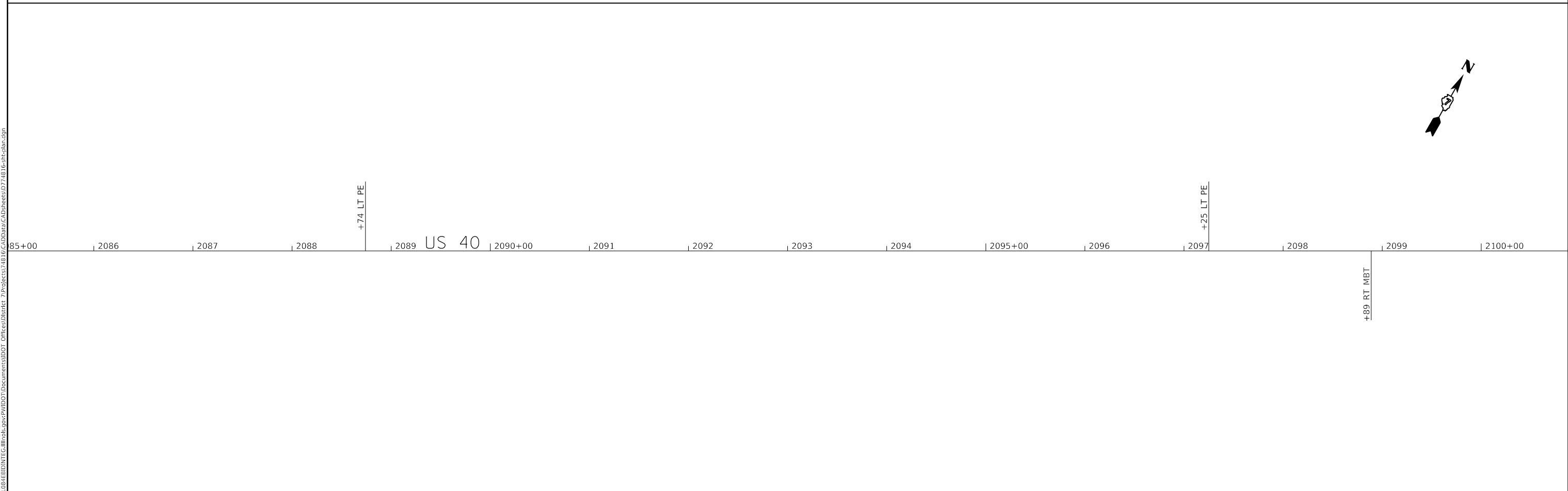
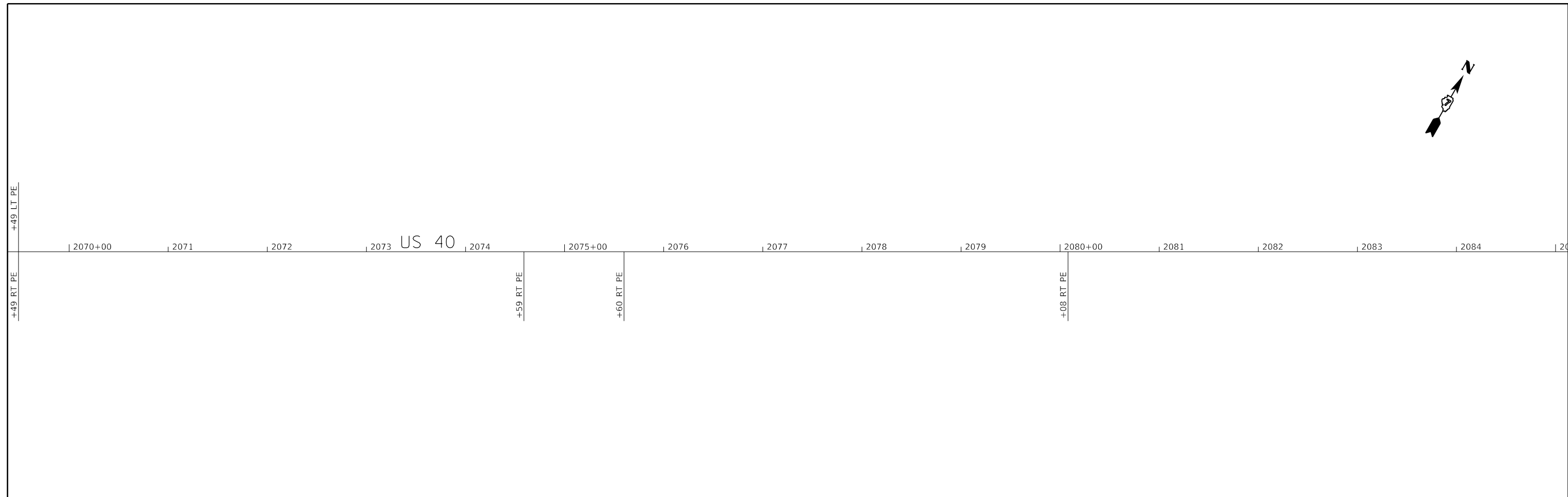
STATE OF ILLINOIS
DEPARTMENT OF TRANSPORTATION

PLAN SHEETS			
SCALE:	SHEET	OF	SHEETS
	STA.		TO STA.

F.A.S. RTE.	SECTION	COUNTY	TOTAL SHEETS	SHEET NO.
1707	*	**	20	7
			CONTRACT NO. 74816	

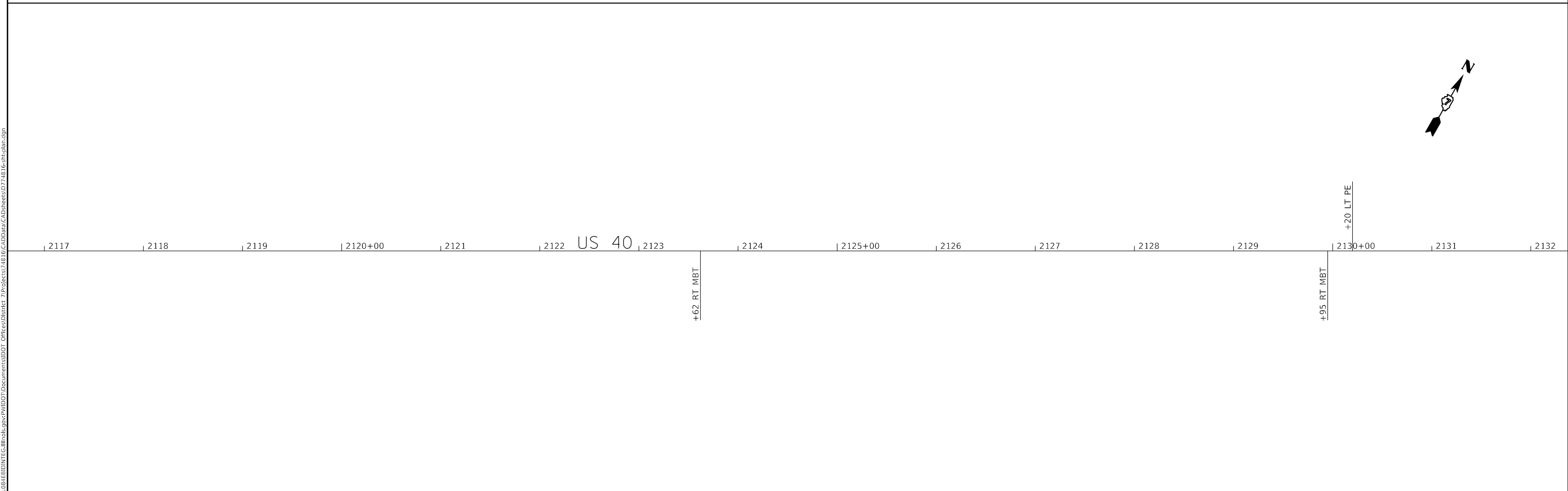
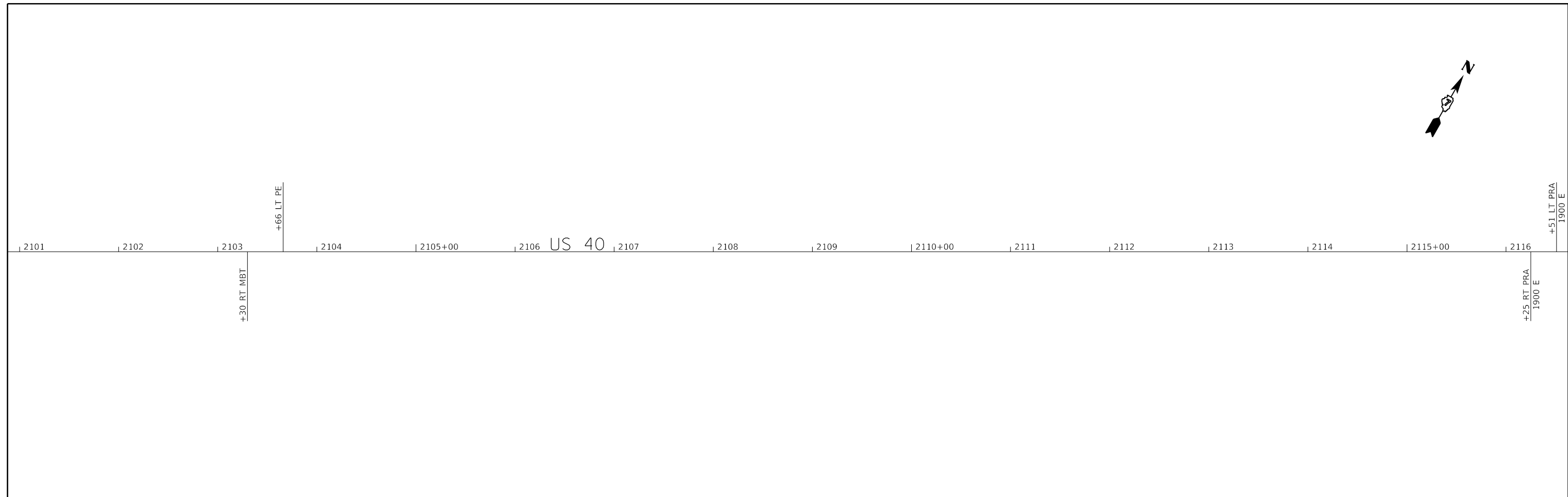
* D7 HMA SAFETY SHLD 2018-3 ** CUMBERLAND, CLARK

MODEL: Default
 FILE NAME: P:\1108\BID\NITEC\Illinois\gov\PIV\DOT\Documents\DOT_Offices\Director\7\Projects\74816\CADD\Drawings\DOT74816-Plan.dgn



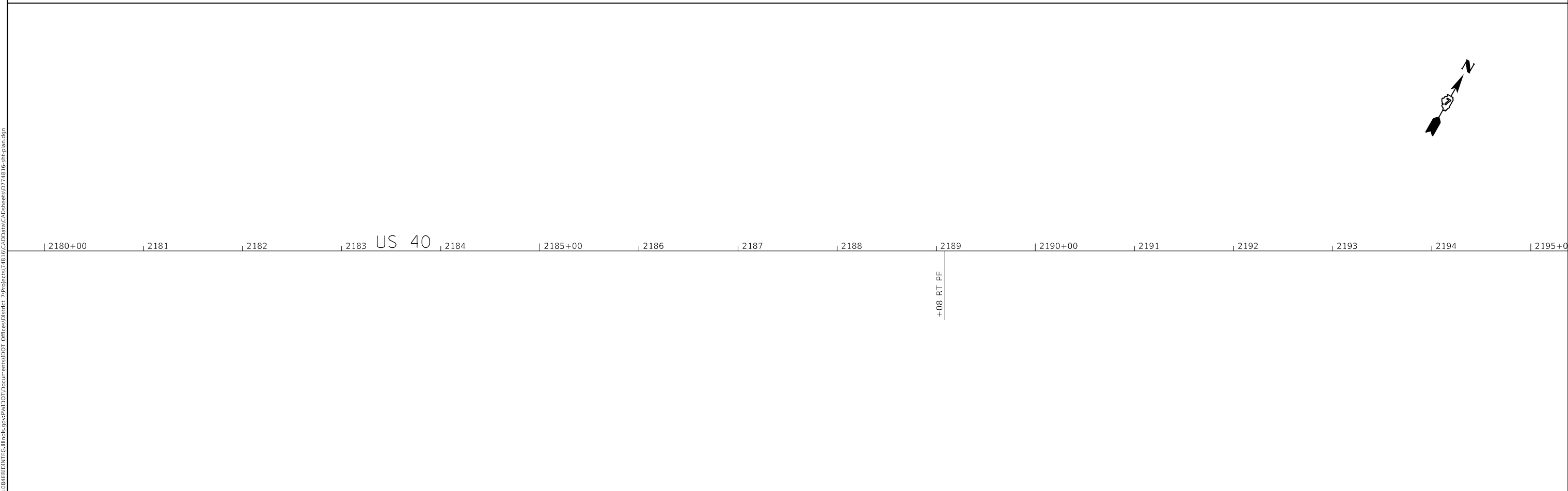
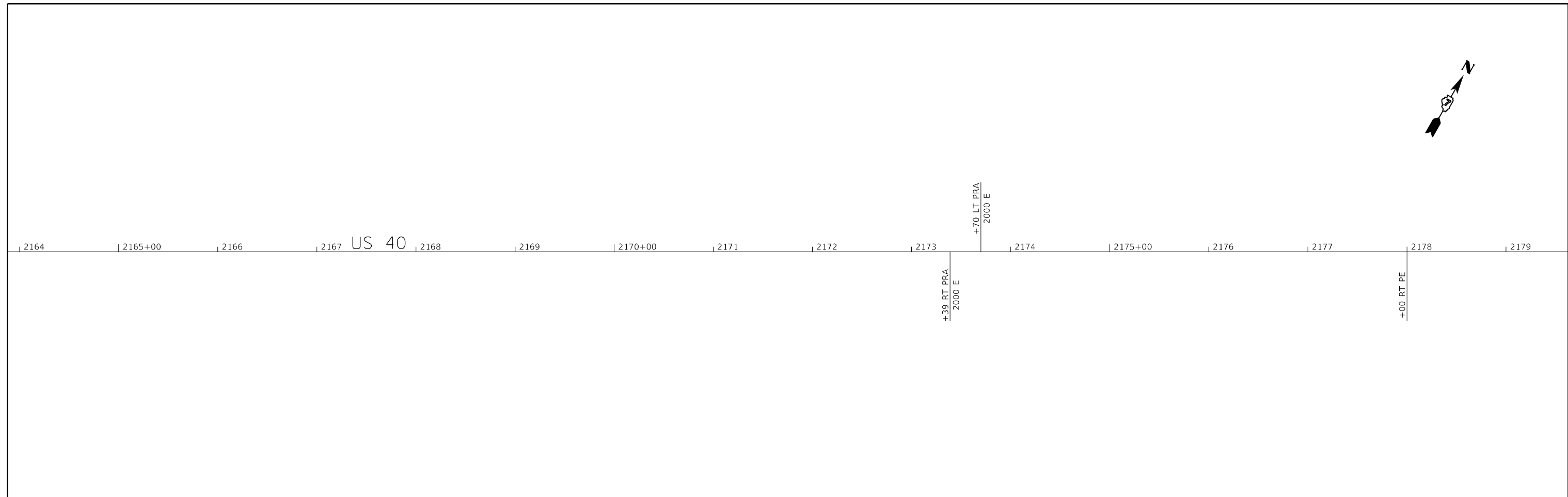
USER NAME = steffenmk	DESIGNED -	REVISED -	STATE OF ILLINOIS DEPARTMENT OF TRANSPORTATION	PLAN SHEETS			F.A.S. RTE.	SECTION	COUNTY	TOTAL SHEETS	SHEET NO.
DRAWN -	REVISED -	1707					*	**	20	8	
PLOT SCALE = 100,0000' / in.	CHECKED -	REVISED -		CONTRACT NO. 74816							
PLOT DATE = 12/15/2017	DATE -	REVISED -		SCALE:	SHEET OF SHEETS	STA. TO STA.	ILLINOIS	FED. AID PROJECT			

MODEL: Default
 FILE NAME: P:\1108\B&E\BIDD\ITEC\Illinois\gov\PI\DOT\Documents\DOT_Offices\Director_7\Projects\74816\CADD\DATA\CAD\papers\074816-PL-clark.dgn

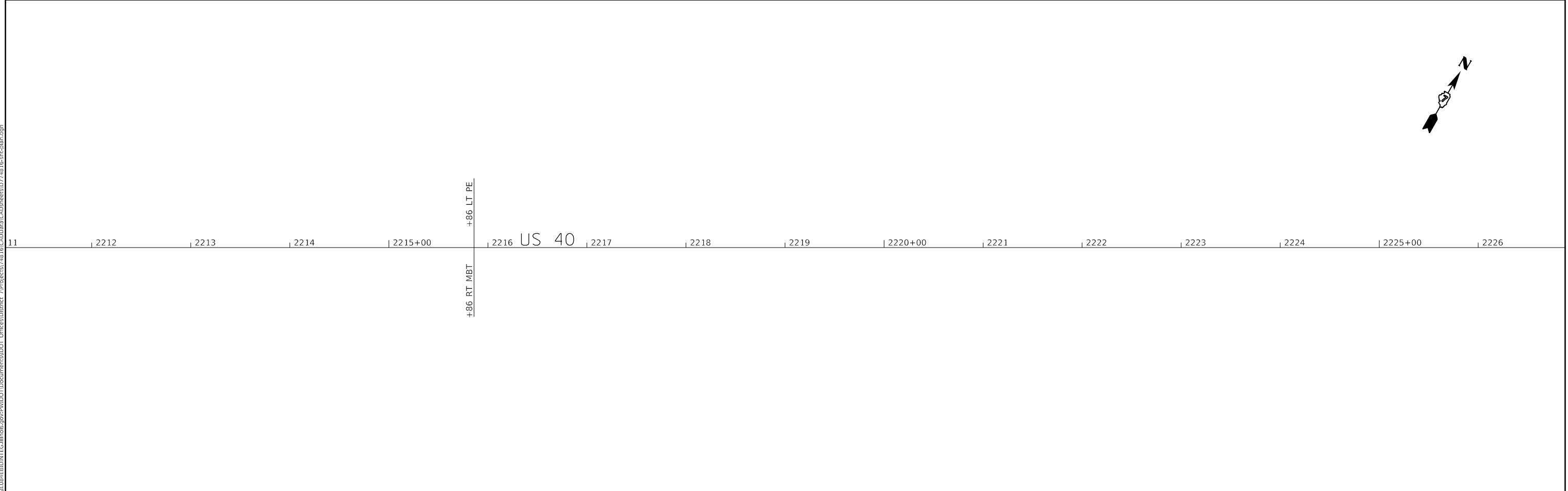
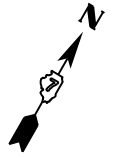
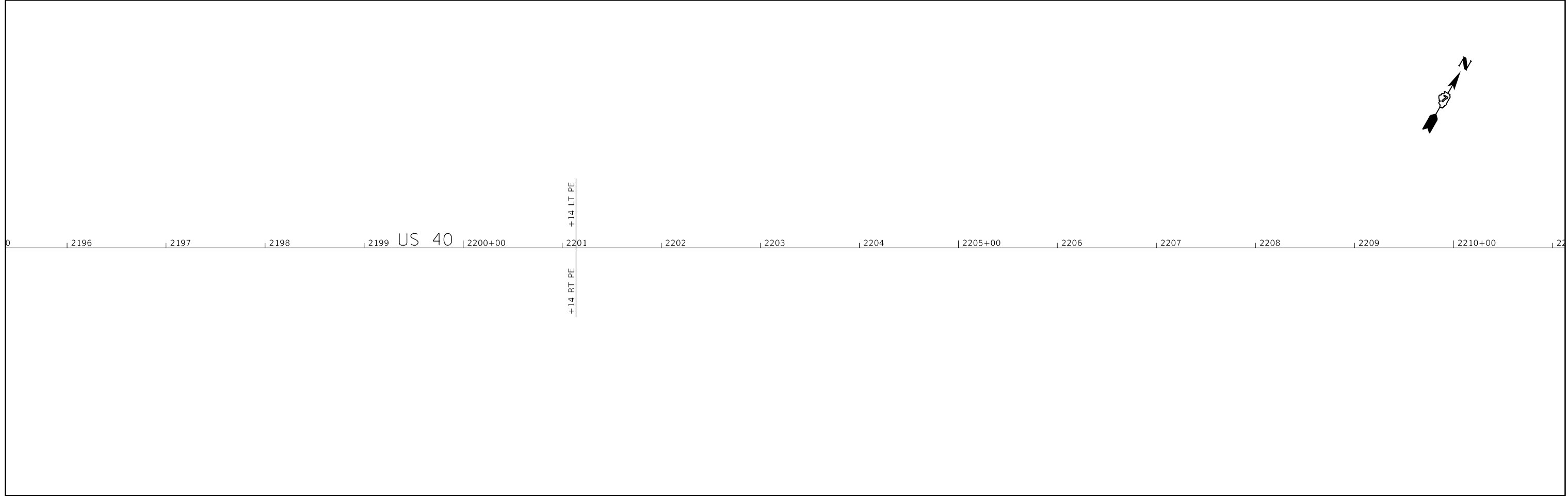
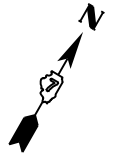


USER NAME = steffenmk	DESIGNED -	REVISED -	STATE OF ILLINOIS DEPARTMENT OF TRANSPORTATION	PLAN SHEETS				F.A.S. RTE.	SECTION	COUNTY	TOTAL SHEETS	SHEET NO.
DRAWN -	REVISED -	1707						*	**	20	9	
PLOT SCALE = 100,0000' / in.	CHECKED -	REVISED -		CONTRACT NO. 74816								
PLOT DATE = 12/15/2017	DATE -	REVISED -		SCALE:	SHEET	OF	SHEETS	STA.	TO	STA.	ILLINOIS	FED. AID PROJECT

MODEL: Default
 FILE NAME: P:\1108\B&E\BIDD\NTEC\Illinois\pwr\RIDOT\Documents\DOT_Offices\Director_7\Projects\74816\CADD\DATA\CAD\papers\74816-PL-clark.dgn



USER NAME = steffenmk	DESIGNED -	REVISED -	STATE OF ILLINOIS DEPARTMENT OF TRANSPORTATION	PLAN SHEETS			F.A.S. RTE.	SECTION	COUNTY	TOTAL SHEETS	SHEET NO.
	DRAWN -	REVISED -					1707	*	**	20	11
PLOT SCALE = 100.0000' / in.	CHECKED -	REVISED -		SCALE: SHEET OF SHEETS STA. TO STA.			CONTRACT NO. 74816				
PLOT DATE = 12/15/2017	DATE -	REVISED -					ILLINOIS FED. AID PROJECT				



MODEL: Default
 FILE: \\nas01.psu.edu\BEBIDN\TEC\Illinois\gov\PIV\DOT\Documents\DOT_Offices\Director\7\Projects\74816\CADD\Drawings\DOT74816-Plan.dgn

USER NAME = steffenmk	DESIGNED -	REVISED -
	DRAWN -	REVISED -
PLOT SCALE = 100,0000' / in.	CHECKED -	REVISED -
PLOT DATE = 12/15/2017	DATE -	REVISED -

STATE OF ILLINOIS
DEPARTMENT OF TRANSPORTATION

PLAN SHEETS			
SCALE:	SHEET	OF	SHEETS
	STA.	TO	STA.

F.A.S. RTE.	SECTION	COUNTY	TOTAL SHEETS	SHEET NO.
1707	*	**	20	12
CONTRACT NO. 74816				



2227 | 2228 | 2229 | 2230+00 | 2231 | 2232 US 40 | 2233 | 2234 | 2235+00 | 2236 | 2237 | 2238 | 2239 | 2240+00 | 2241 | 2242

+53 LT PRA
2100 E
+53 RT PRA
2100 E



2243 | 2244 | 2245+00 | 2246 | 2247 | 2248 US 40 | 2249 | 2250+00 | 2251 | 2252 | 2253 | 2254 | 2255+00 | 2256 | 2257 | 2258

MODEL: Default
FILE NAME: P:\1108\B&E\BID\NTEC\Illinois.gov\PWIDOT\Documents\DOT_Offices\District 7\Projects\74816\CAD\Drawings\74816-PL-PLAN.dgn

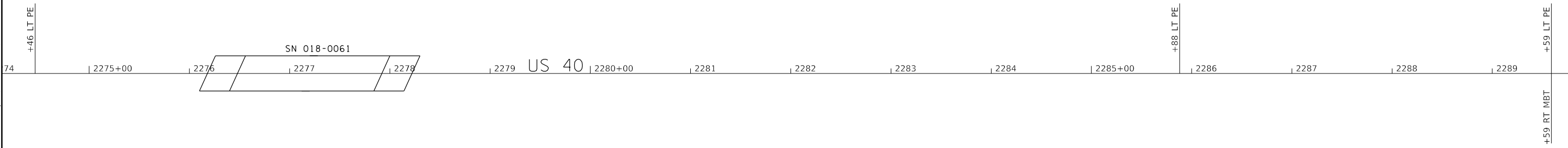
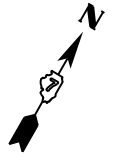
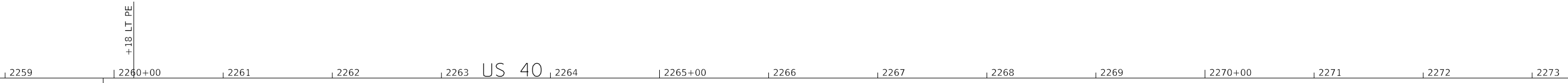
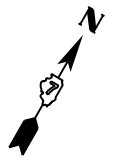
USER NAME = steffenmk	DESIGNED -	REVISED -
	DRAWN -	REVISED -
PLOT SCALE = 100,0000 ' / in.	CHECKED -	REVISED -
PLOT DATE = 12/15/2017	DATE -	REVISED -

**STATE OF ILLINOIS
DEPARTMENT OF TRANSPORTATION**

PLAN SHEETS

SCALE: SHEET OF SHEETS STA. TO STA.

F.A.S. RTE.	SECTION	COUNTY	TOTAL SHEETS	SHEET NO.
1707	*	**	20	13
CONTRACT NO. 74816				



MODEL: Default
 FILE NAME: P:\1108\BID\NITEC\Illinois.gov\PIV\DOT\Documents\DOT Offices\District 7\Projects\74816\CADD\data\CAD\sheet\074816-Plan.dgn

USER NAME = steffenmk	DESIGNED -	REVISED -
	DRAWN -	REVISED -
PLOT SCALE = 100.0000' / in.	CHECKED -	REVISED -
PLOT DATE = 12/15/2017	DATE -	REVISED -

**STATE OF ILLINOIS
 DEPARTMENT OF TRANSPORTATION**

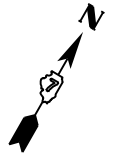
PLAN SHEETS

SCALE: SHEET OF SHEETS STA. TO STA.

F.A.S. RTE.	SECTION	COUNTY	TOTAL SHEETS	SHEET NO.
1707	*	**	20	14
CONTRACT NO. 74816				

* D7 HMA SAFETY SHLD 2018-3

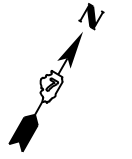
** CUMBERLAND, CLARK



2290+00 | 2291 | 2292 | 2293 | 2294 US 40 | 2295+00 | 2296 | 2297 | 2298 | 2299 | 2300+00 | 2301 | 2302 | 2303 | 2304 | 2305+00

+55 RT PRA
715 N
+55 LT PE

+11 LT PE



2306 | 2307 | 2308 | 2309 | 2310+00 | 2311 US 40 | 2312 | 2313 | 2314 | 2315+00 | 2316 | 2317 | 2318 | 2319 | 2320+00 | 2321

+11 LT PE
+17 RT PE

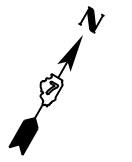
MODEL: Default
FILE NAME: p:\u0008\BID\NITEC\Illinois\pov\PWIDOT\Documents\DOT_Offices\Director\Projects\74816\CAD\Drawings\74816-Plan.dgn

USER NAME = steffenmk	DESIGNED -	REVISED -
	DRAWN -	REVISED -
PLOT SCALE = 100.0000 ' / in.	CHECKED -	REVISED -
PLOT DATE = 12/15/2017	DATE -	REVISED -

**STATE OF ILLINOIS
DEPARTMENT OF TRANSPORTATION**

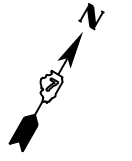
PLAN SHEETS			
SCALE:	SHEET	OF	SHEETS
	STA.	TO	STA.

F.A.S. RTE.	SECTION	COUNTY	TOTAL SHEETS	SHEET NO.
1707	*	**	20	15
CONTRACT NO. 74816				



2322 | 2323 | 2324 | 2325+00 | 2326 US 40 | 2327 | 2328 | 2329 | 2330+00 | 2331 | 2332 | 2333 | 2334 | 2335+00 | 2336

+5.6 LT. PRA
-227.5 E
+5.6 RT. PRA
-227.5 E



37 | 2338 | 2339 | 2340+00 | 2341 US 40 | 2342 | 2343 | 2344 | 2345+00 | 2346 | 2347 | 2348 | 2349 | 2350+00 | 2351 | 2352

MODEL: Default
FILE: \\nas101.psu.edu\BEBID\NTEC\Illinois.gov\PIW\DOT\Documents\DOT_Offices\District 7\Projects\74816\CAD\Drawings\74816-Plat.dgn

USER NAME = steffenmk	DESIGNED -	REVISED -
	DRAWN -	REVISED -
PLOT SCALE = 100.0000' / in.	CHECKED -	REVISED -
PLOT DATE = 12/15/2017	DATE -	REVISED -

**STATE OF ILLINOIS
DEPARTMENT OF TRANSPORTATION**

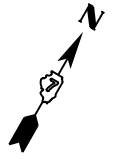
PLAN SHEETS

SCALE: SHEET OF SHEETS STA. TO STA.

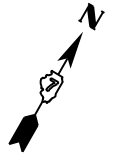
F.A.S. RTE.	SECTION	COUNTY	TOTAL SHEETS	SHEET NO.
1707	*	**	20	16
CONTRACT NO. 74816				

* D7 HMA SAFETY SHLD 2018-3

** CUMBERLAND, CLARK



2353 | 2354 | 2355+00 | 2356 | 2357 US 40 | 2358 | 2359 | 2360+00 | 2361 | 2362 | 2363 | 2364 | 2365+00 | 2366 | 2367 | 2368



2369 | 2370+00 | 2371 | 2372 US 40 | 2373 | 2374 | 2375+00 | 2376 | 2377 | 2378 | 2379 | 2380+00 | 2381 | 2382 | 2383 | 2384

+0.1 RT PRA
2350 E
+0.1 LT PRA
2350 E

MODEL: Default
FILE NAME: p:\u0008\B&E\BID\NTEC\Illinois\gov\PI\DOT\Documents\DOT_Offices\Director_7\Projects\74816\CAD\Drawings\DOT74816-PL-PLAN.dgn

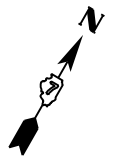
USER NAME = steffenmk	DESIGNED -	REVISED -
	DRAWN -	REVISED -
PLOT SCALE = 100.0000 ' / in.	CHECKED -	REVISED -
PLOT DATE = 12/15/2017	DATE -	REVISED -

**STATE OF ILLINOIS
DEPARTMENT OF TRANSPORTATION**

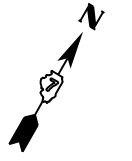
PLAN SHEETS			
SCALE:	SHEET	OF	SHEETS
	STA.	TO	STA.

F.A.S. RTE.	SECTION	COUNTY	TOTAL SHEETS	SHEET NO.
1707	*	**	20	17
CONTRACT NO. 74816				

* D7 HMA SAFETY SHLD 2018-3 ** CUMBERLAND, CLARK



| 2385+00 | 2386 | 2387 | 2388 US 40 | 2389 | 2390+00 | 2391 | 2392 | 2393 | 2394 | 2395+00 | 2396 | 2397 | 2398 | 2399 | 2400+00



00+00 | 2401 | 2402 | 2403 | 2404 US 40 | 2405+00 | 2406 | 2407 | 2408 | 2409 | 2410+00 | 2411 | 2412 | 2413 | 2414 | 2415+00

MODEL: Default
FILE: \\nas01c.psu.edu\BEBID\NTEG\Illinois.gov\PIV\DOT\Documents\DOT_Offices\District 7\Projects\74816\CADD\Drawings\74816-Plat.dgn

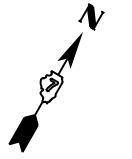
USER NAME = steffenmk	DESIGNED -	REVISED -
	DRAWN -	REVISED -
PLOT SCALE = 100.0000' / in.	CHECKED -	REVISED -
PLOT DATE = 12/15/2017	DATE -	REVISED -

**STATE OF ILLINOIS
DEPARTMENT OF TRANSPORTATION**

PLAN SHEETS

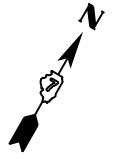
SCALE: SHEET OF SHEETS STA. TO STA.

F.A.S. RTE.	SECTION	COUNTY	TOTAL SHEETS	SHEET NO.
1707	*	**	20	18
CONTRACT NO. 74816				



2416 | 2417 | 2418 | 2419 | 2420+00 | 2421 US 40 | 2422 | 2423 | 2424 | 2425+00 | 2426 | 2427 | 2428 | 2429 | 2430+00 | 2431

+81 LT PRA
2425 E
+81 RT PRA
2425 E



2432 | 2433 | 2434 | 2435+00 | 2436 US 40 | 2437 | 2438 | 2439 | 2440+00 | 2441 | 2442 | 2443 | 2444 | 2445+00 | 2446 | 2447

MODEL: Default
FILE NAME: P:\1108\B&E\BID\NTEC\Illinois\pwr\RIDOT\Documents\DOT_Offices\Director\Projects\74816\CAD\Drawings\74816-PL-PLAN.dgn

USER NAME = steffenmk	DESIGNED -	REVISED -
	DRAWN -	REVISED -
PLOT SCALE = 100.0000 ' / in.	CHECKED -	REVISED -
PLOT DATE = 12/15/2017	DATE -	REVISED -

**STATE OF ILLINOIS
DEPARTMENT OF TRANSPORTATION**

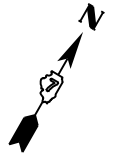
PLAN SHEETS

SCALE: SHEET OF SHEETS STA. TO STA.

F.A.S. RTE.	SECTION	COUNTY	TOTAL SHEETS	SHEET NO.
1707	*	**	20	19
			CONTRACT NO. 74816	

* D7 HMA SAFETY SHLD 2018-3

** CUMBERLAND, CLARK

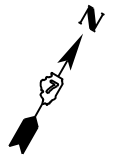


CUMBERLAND/CLARK
COUNTY LINE: 2447+52

2448 2449 2450+00 2451 US 40 2452 2453 2454 2455+00 2456 2457

POT Sta 2457+78.00

PROJECT ENDS
STA 2453+06 LT & RT



MODEL: Default
FILE NAME: P:\1108\B&E\BIDD\ITEC\Illinois.gov\PWIDOT\Documents\DOT Offices\District 7\Projects\174816\CADD\DATA\CAD\Sheet\174816-PC-PLAN.dgn

USER NAME = steffenmk	DESIGNED -	REVISED -
	DRAWN -	REVISED -
PLOT SCALE = 100,0000' / in.	CHECKED -	REVISED -
PLOT DATE = 12/15/2017	DATE -	REVISED -

**STATE OF ILLINOIS
DEPARTMENT OF TRANSPORTATION**

PLAN SHEETS

SCALE: SHEET OF SHEETS STA. TO STA.

F.A.S. RTE.	SECTION	COUNTY	TOTAL SHEETS	SHEET NO.
1707	*	**	20	20
CONTRACT NO. 74816				

* D7 HMA SAFETY SHLD 2018-3

** CUMBERLAND, CLARK