

STATE OF ILLINOIS  
DEPARTMENT OF TRANSPORTATION

F.A.I. RTE.	SECTION	COUNTY	TOTAL SHEETS	SHEET NO.
**	D5 CM PATCHING 2018-5	*	15	1
ILLINOIS		CONTRACT NO. 70D04		

\*CHAMPAIGN & VERMILION  
\*\*57 & 74

D-95-014-18

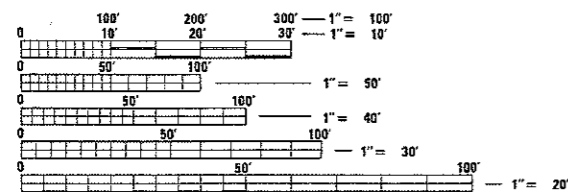
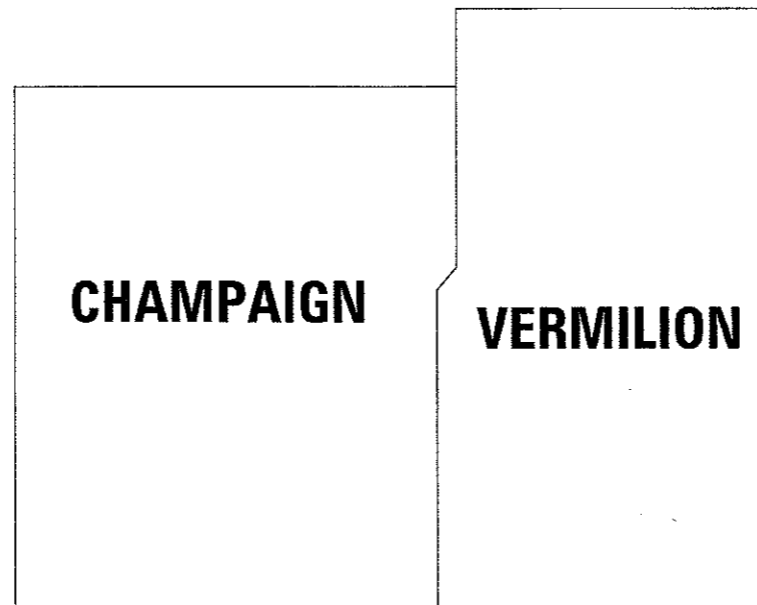
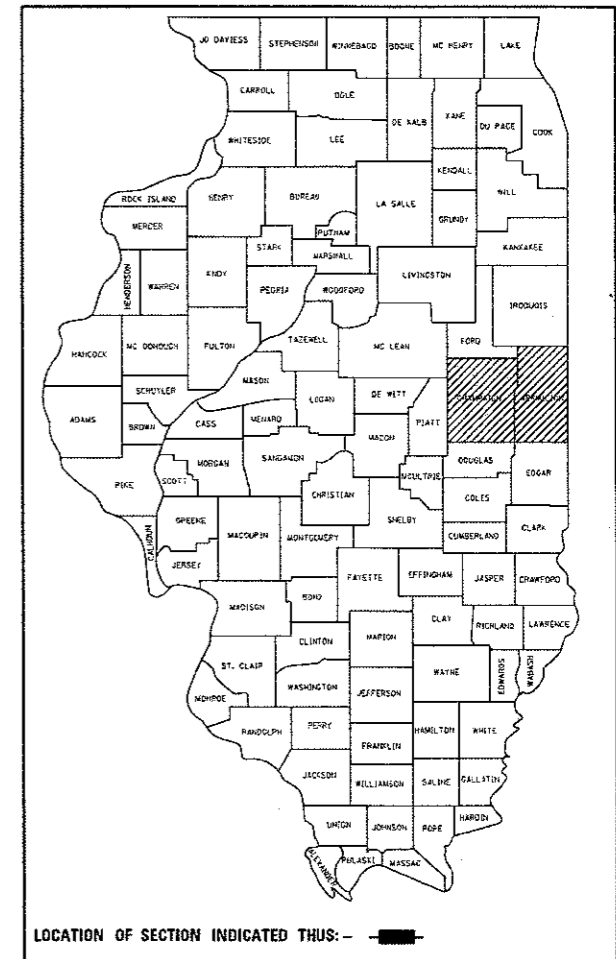
FOR INDEX OF SHEETS, SEE SHEET NO. 2  
FOR LOCATION MAPS, SEE SHEET NO. 3-4  
FOR SUMMARY OF QUANTITIES, SEE SHEET NO. 5

PROPOSED  
HIGHWAY PLANS

F.A.I. 57 & F.A.I. 74  
SECTION D5 CM PATCHING 2018-5  
PATCHING  
VARIOUS LOCATIONS  
CHAMPAIGN & VERMILION COUNTIES

C-95-027-18

CURRENT ADT  
SEE LOCATION MAPS



FULL SIZE PLANS HAVE BEEN PREPARED USING STANDARD ENGINEERING SCALES. REDUCED SIZED PLANS WILL NOT CONFORM TO STANDARD SCALES. IN MAKING MEASUREMENTS ON REDUCED PLANS, THE ABOVE SCALES MAY BE USED.

J.U.L.I.E.  
JOINT UTILITY LOCATION INFORMATION FOR EXCAVATION  
1-800-892-0123  
OR 811

PROJECT ENGINEER: NANCY FASIG  
SQUAD LEADER: STEVE COOMBES  
DESIGNER: MARCEL LARE  
PHONE: 217-465-4181

CONTRACT NO. 70D04

GROSS LENGTH = 155,617.32 FT. = 29.473 MILE  
NET LENGTH = 155,617.32 FT. = 29.473 MILE

STATE OF ILLINOIS  
DEPARTMENT OF TRANSPORTATION

SUBMITTED December 14 20 17

John A. Larson  
REGION THREE ENGINEER

Feb 2 20 18  
ENGINEER OF DESIGN AND ENVIRONMENT

David P. [Signature]  
DIRECTOR OF PROGRAM DEVELOPMENT

PRINTED BY THE AUTHORITY  
OF THE STATE OF ILLINOIS

## INDEX OF SHEETS

SHEET NO.	DESCRIPTION
1	COVER SHEET
2	INDEX OF SHEETS AND LIST OF STANDARDS
2	GENERAL NOTES
3-4	LOCATION MAPS
5	SUMMARY OF QUANTITIES
6-9	TYPICAL CROSS SECTIONS
10-12	SCHEDULE OF QUANTITIES
13	SWITCHBACK
14-15	CLASS A "SPECIAL" PATCHING DETAILS

## LIST OF STANDARDS

STANDARD NO.	DESCRIPTION
000001-06	STANDARD SYMBOLS, ABBREVIATIONS AND PATTERNS
001001-02	AREAS OF REINFORCEMENT BARS
001006	DECIMAL OF AN INCH AND OF A FOOT
420001-09	PAVEMENT JOINTS
420701-03	PAVEMENT WELDED WIRE REINFORCEMENT
421001-03	BAR REINFORCEMENT FOR CRC PAVEMENT
442101-08	CLASS B PATCHES
701101-05	OFF-ROAD OPERATIONS, MULTILANE, 15' (4.5M) TO 24" (600 MM) FROM PAVEMENT EDGE
701106-02	OFF-ROAD OPERATIONS, MULTILANE, MORE THAN 15' (4.5M) FROM PAVEMENT EDGE
701400-09	APPROACH TO LANE CLOSURE, FREEWAY / EXPRESSWAY
701401-11	LANE CLOSURE, FREEWAY OR EXPRESSWAY
701411-09	LANE CLOSURE, MULTILANE, AT ENTRANCE OR EXIT RAMP, FOR SPEEDS < 45 MPH
701426-09	LANE CLOSURE, MULTILANE, INTERMITTENT OR MOVING OPERATION, FOR SPEEDS < 45 MPH
701428-01	TRAFFIC CONTROL SETUP AND REMOVAL FREEWAY/EXPRESSWAY
701901-07	TRAFFIC CONTROL DEVICES

## COMMITMENTS

THERE ARE NO COMMITMENTS FOR THIS PROJECT.

## GENERAL NOTES

**G.N.-100**

ENGLISH UNITS OF MEASUREMENT SHALL GOVERN OVER AND SUPERSEDE ANY METRIC UNITS SHOWN IN THIS CONTRACT. WHERE INCLUDED, METRIC UNITS ARE FOR INFORMATION ONLY.

**G.N.-100A**

ELECTRONIC FILES AND/OR ELECTRONIC SURVEY INFORMATION INCLUDING CADD FILES WILL NOT BE AVAILABLE TO THE CONTRACTOR.

**G.N.-442B -- PATCHING SCHEDULES**

THE PATCHING SCHEDULES INCLUDED IN THE PLANS REPRESENT THE BEST INFORMATION AVAILABLE AT THE TIME OF COMPLETION OF THE PLANS FOR LETTING. VARIATIONS IN LOCATION AND SIZES OF BOTH FULL-DEPTH AND PARTIAL-DEPTH PATCHES MAY OCCUR.

**G.N.-1004.01**

COARSE AGGREGATE GRADATION CA-10 MAY BE USED WHENEVER COARSE AGGREGATE CA-6 IS SPECIFIED IN THE STANDARD SPECIFICATIONS.

\*CHAMPAIGN & VERMILION  
\*\*57 & 74

FILE NAME =	USER NAME = coombessf	DESIGNED -	REVISED -	<b>STATE OF ILLINOIS DEPARTMENT OF TRANSPORTATION</b>	<b>INDEX OF SHEETS, LIST OF STANDARDS &amp; GENERAL NOTES</b>	F.A.I. RTE.	SECTION	COUNTY	TOTAL SHEETS	SHEET NO.	
p:\11\084EBIDINTEG\Illinois.gov\PI\DOT\Documents\DOT Offices\District 5\Projects\057\057-D04-shr-gennotes.dgn		CHECKED -	REVISED -			**	D5 CM PATCHING 2018-5	*	15	2	
#MODELNAME#	PLOT SCALE = 40.0000' / 1" =	DATE -	REVISED -			SCALE:	SHEET 1 OF 1 SHEETS	STA.	TO STA.	CONTRACT NO. 70D04	
	PLOT DATE = 12/14/2017	DATE -	REVISED -							(ILLINOIS) FED. AID PROJECT	

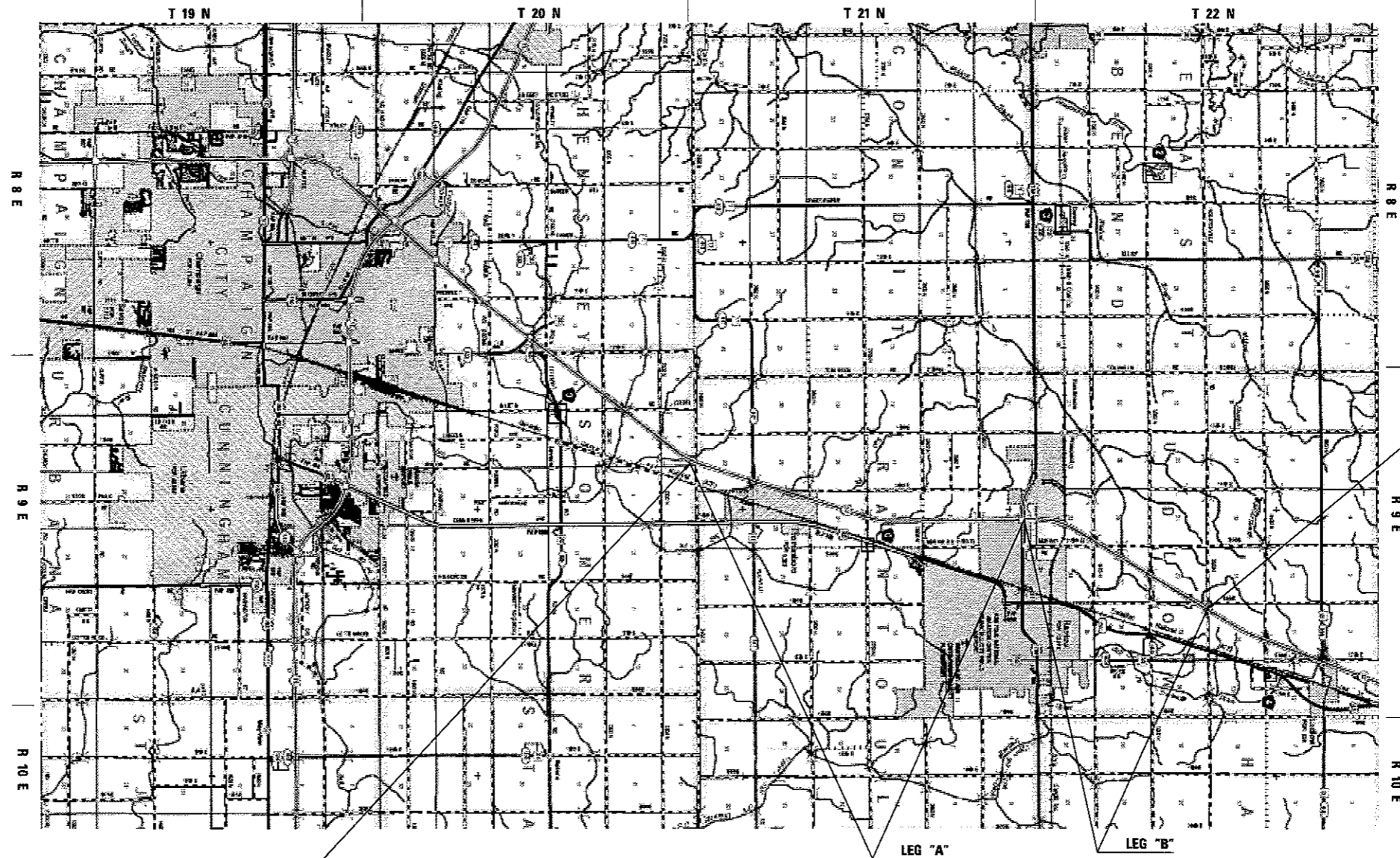
# LOCATION MAP #1

CHAMPAIGN CO.  
F.A.I. 57

## CURRENT ADT

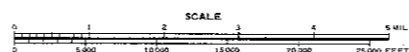
FUNCTIONAL CLASSIFICATION: INTERSTATE  
FAI 57 (I-57)

LEG "A" ADT(2017) = 22,400 SU=6.5% MU=24.6%  
LEG "B" ADT(2017) = 17,800 SU=3.5% MU=29.8%



END SECTION  
STA. 1473 + 50.34

BEGIN SECTION  
STA. 1095 + 40.26



GROSS LENGTH = 37,810.08 FT. = 7.161 MILE  
NET LENGTH = 37,810.08 FT. = 7.161 MILE

TOWNSHIPS
SOMER
RANTOUL
LUDLOW

\*CHAMPAIGN & VERMILION  
\*\*57 & 74

FILE NAME =	USER NAME = coombesf	DESIGNED -	REVISED -	<b>STATE OF ILLINOIS DEPARTMENT OF TRANSPORTATION</b>	<b>LOCATION MAP #1</b>	F.A.I. RTE.	SECTION	COUNTY	TOTAL SHEETS	SHEET NO.	
pw\ill084EB\INTEG.all\illinois.gov\FW\DOT\Documents\1007 Offices\District 5\Projects\0570\DRAWN\Date\Design\0570004-sht-Location	PLT SCALE = 48.0000 ' / in.	CHECKED -	REVISED -			**	D5 CM PATCHING 2018-5	*	15	3	
#MODELNAME#	PLT DATE = 12/11/2017	DATE -	REVISED -			SCALE: SHEET 1 OF 2 SHEETS STA. TO STA.		CONTRACT NO. 70D04			
						ILLINOIS FED. AID PROJECT					

# LOCATION MAP #2

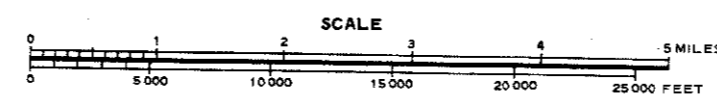
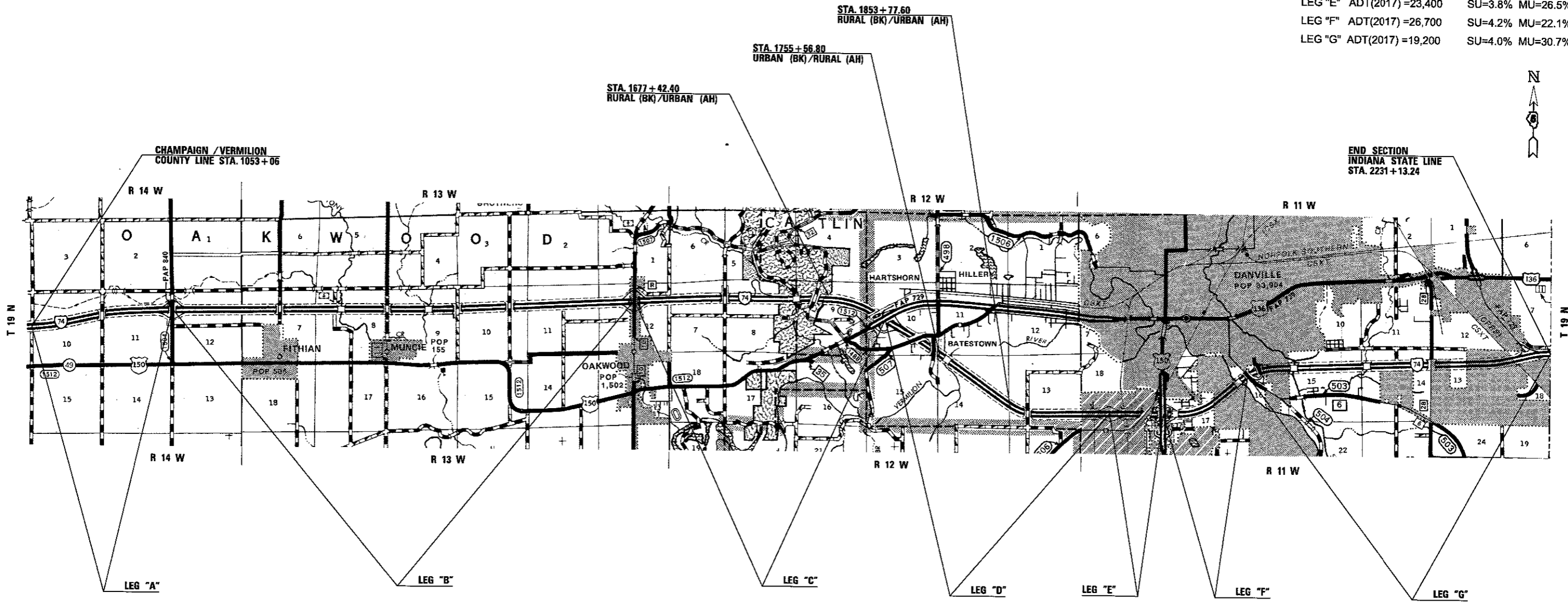
VERMILION CO.  
F.A.I. 74

## CURRENT ADT

FUNCTIONAL CLASSIFICATION: INTERSTATE

FAI 74 (I-74)

LEG "A"	ADT(2017) =26,800	SU=3.4%	MU=22.8%
LEG "B"	ADT(2017) =25,800	SU=3.6%	MU=23.6%
LEG "C"	ADT(2017) =24,800	SU=3.7%	MU=25.4%
LEG "D"	ADT(2017) =22,000	SU=4.0%	MU=27.3%
LEG "E"	ADT(2017) =23,400	SU=3.8%	MU=26.5%
LEG "F"	ADT(2017) =26,700	SU=4.2%	MU=22.1%
LEG "G"	ADT(2017) =19,200	SU=4.0%	MU=30.7%



GROSS LENGTH = 117,807.24 FT. = 22.312 MILE  
NET LENGTH = 117,807.24 FT. = 22.312 MILE

TOWNSHIPS	
OAKWOOD	
DANVILLE	

\*CHAMPAIGN & VERMILION  
\*\*57 & 74

FILE NAME =	USER NAME = oombessf	DESIGNED -	REVISED -
PROJECT = \\ML084EBID\INTEG\Illinois.gov\PIWIDOT\Documents\DOT_Offices\District_5\Projects\057\DRAWN\057\Design\0572084-shr-Location		CHECKED -	REVISED -
MODEL NAMES	PLOT SCALE = 40,0000 1/1 in.	DATE -	REVISED -
	PLOT DATE = 12/11/2017		

STATE OF ILLINOIS  
DEPARTMENT OF TRANSPORTATION

LOCATION MAP #2

SCALE: SHEET 2 OF 2 SHEETS STA. TO STA.

F.A.I. RTE.	SECTION	COUNTY	TOTAL SHEETS	SHEET NO.
**	D5 CM PATCHING 2018-5	*	15	4
CONTRACT NO. 70D04			ILLINOIS FED. AID PROJECT	

# SUMMARY OF QUANTITIES

LOCATION OF WORK: FAI 57 FAI 74 FAI 74  
 RURAL RURAL URBAN  
 COUNTY: CHAMPAIGN VERMILION VERMILION  
 100 % STATE 100 % STATE 100 % STATE  
 CONSTRUCTION TYPE CODE: 0006 0006 0006

LOCATION OF WORK: FAI 57 FAI 74 FAI 74  
 RURAL RURAL URBAN  
 COUNTY: CHAMPAIGN VERMILION VERMILION  
 100% STATE 100% STATE 100% STATE  
 CONSTRUCTION TYPE CODE: 0006 0006 0006

CODE NO.	DESCRIPTION	UNIT	TOTAL QUANTITY	QUANTITY	QUANTITY	QUANTITY
44200050	WELDED WIRE REINFORCEMENT	SQ YD	418.0		263.0	155.0
44201031	CLASS B PATCHES, TYPE II, 15 INCH	SQ YD	150.0			150.0
44201035	CLASS B PATCHES, TYPE III, 15 INCH	SQ YD	20.0			20.0
44201037	CLASS B PATCHES, TYPE IV, 15 INCH	SQ YD	300.0		300.0	
44201053	CLASS B PATCHES, TYPE IV, 17 INCH	SQ YD	67.0			67.0
44201055	CLASS B PATCHES TYPE II, 17 INCH	SQ YD	171.0			171.0
44201057	CLASS B PATCHES TYPE III, 17 INCH	SQ YD	68.0			68.0
44201299	DOWELS BARS 1 1/2"	EACH	1,020.0		220.0	800.0

CODE NO.	DESCRIPTION	UNIT	TOTAL QUANTITY	QUANTITY	QUANTITY	QUANTITY
44213000	PATCHING REINFORCEMENT	SQ YD	75.0	75.0		
44213200	SAW CUTS	FOOT	3,050.0	304.0	630.0	2,116.0
44213204	TIE BARS 3/4"	EACH	330.0	192.0	113.0	25.0
67100100	MOBILIZATION	LSUM	1.0	0.3	0.3	0.4
70100420	TRAFFIC CONTROL & PROTECTION, STD. 701411	EACH	10.0	1.0		9.0
70100800	TRAFFIC CONTROL & PROTECTION, STD. 701401	LSUM	1.0	0.3	0.3	0.4
X1700052	CLASS A PATCHES, TYPE II, 12 INCH (SPECIAL)	SQ YD	75.0	75.0		
X7015005	CHANGEABLE MESSAGE SIGN	CAL DA	72.0	18.0	30.0	24.0

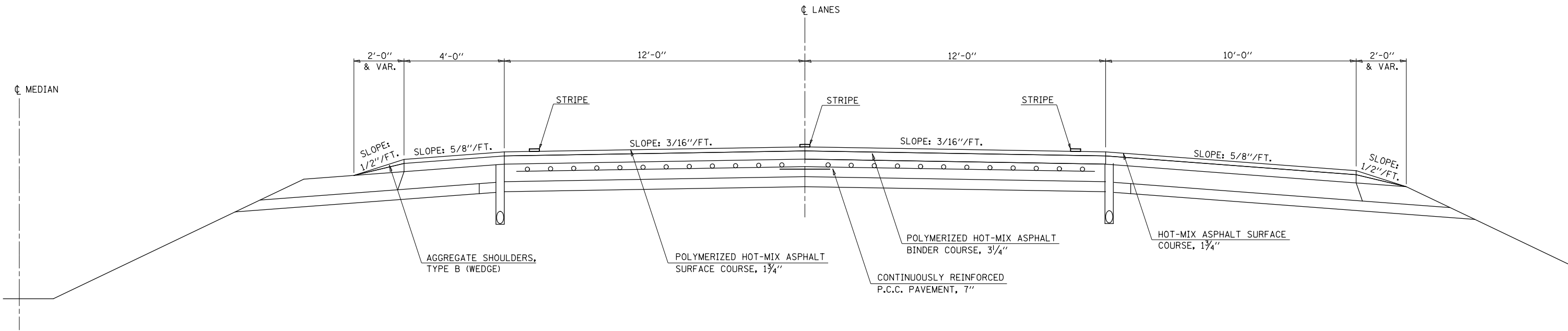
FILE NAME =	USER NAME = coombesf	DESIGNED -	REVISED -	<b>STATE OF ILLINOIS DEPARTMENT OF TRANSPORTATION</b>	<b>SUMMARY OF QUANTITIES</b>	F.A.I. R.T.E.	SECTION	COUNTY	TOTAL SHEETS	SHEET NO.	
						**	D5 CM PATCHING 2018-5	*	15	5	
						CONTRACT NO. 70004					
						[ILLINOIS] FED. AID PROJECT					
#MODELNAME#	PLOT DATE = 12/11/2017	DATE -	REVISED -	SCALE:	SHEET 1 OF 1 SHEETS	STA.	TO STA.				

REV

# 1 EXISTING TYPICAL SECTION F.A.I. 57

LOCATION MAP #1

STATION TO STATION  
1095+40.26 TO 1473+50.34 (30)



•CHAMPAIGN & VERMILION  
•57 & 74

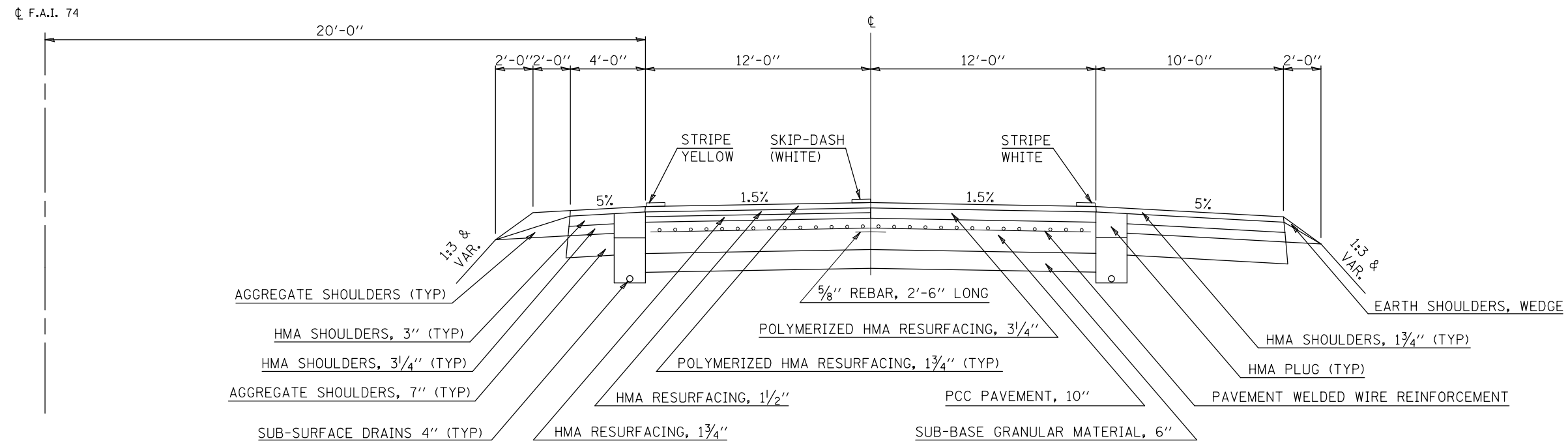
FILE NAME =	USER NAME = coombessf	DESIGNED -	REVISED -	<b>STATE OF ILLINOIS DEPARTMENT OF TRANSPORTATION</b>	<b>TYPICAL CROSS SECTIONS</b>			F.A.I. RTE.	SECTION	COUNTY	TOTAL SHEETS	SHEET NO.
pw:\IL\084EBIDINTEG.illinois.gov\PIWIDOT\Documents\IDOT Offices\District 5\Projects\0570004\Design\0570004-shr-typical.dwg					DRAWN	REVISED	REVISED	••	D5 CM PATCHING 2018-5	•	15	6
PLOT SCALE = 40.0000' / in.					CHECKED -	REVISED -	REVISED -	CONTRACT NO. 70D04				
#MODELNAME#					DATE -	REVISED -	REVISED -	ILLINOIS FED. AID PROJECT				
					SCALE:	SHEET 1	OF 4	SHEETS	STA.	TO STA.		

## 2 EXISTING TYPICAL SECTION F.A.I. 74

LOCATION MAP #2

STATION IO STATION  
1053+06.00 1180+00.00 ③

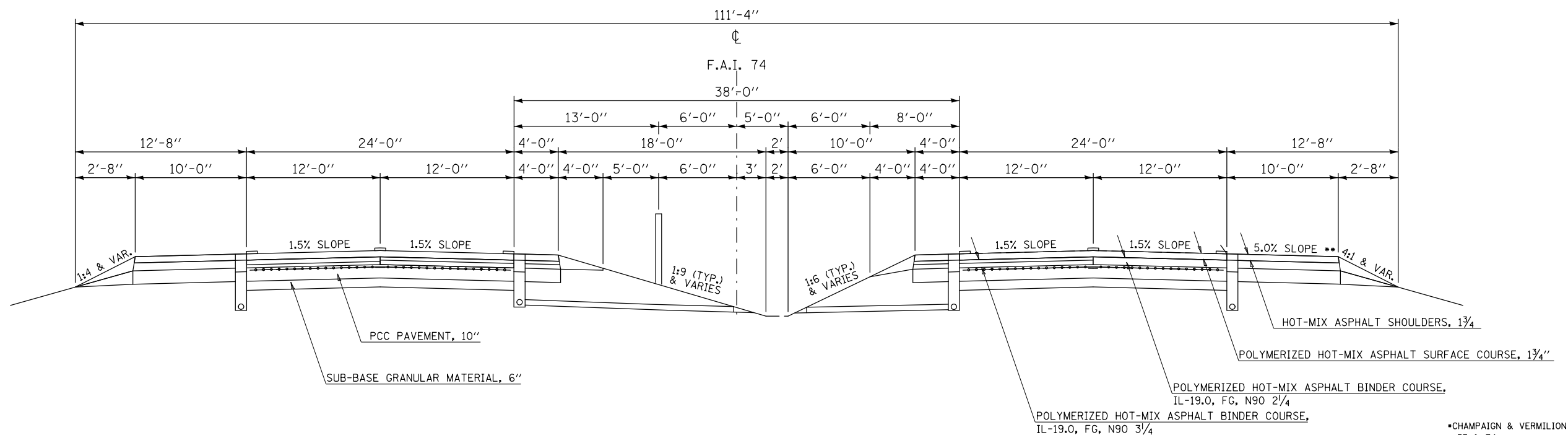
CHAMPAIGN AND VERMILION COUNTY  
LINE AT STA 1053+06.00



## 3 EXISTING TYPICAL SECTION F.A.I. 74

LOCATION MAP #2

STATION IO STATION  
② 1180+00.00 1616+00.00 ④



FILE NAME =	USER NAME = coombessf	DESIGNED -	REVISED -	<b>STATE OF ILLINOIS DEPARTMENT OF TRANSPORTATION</b>	<b>TYPICAL CROSS SECTIONS</b>	F.A.I. RE.	SECTION	COUNTY	TOTAL SHEETS	SHEET NO.
<p style="font-size: small;">p:\IL\084EBIDINTEG\illinois.gov\PIWIDOT\Documents\IDOT Offices\District 5\Projects\0570004\Design\0570004-shr-typical.dwg</p>						D5 CM PATCHING 2018-5	•	•	15	7
<p style="font-size: small;">PLOT SCALE = 40.0000' / in.</p>						CONTRACT NO. 70D04				
<p style="font-size: small;">#MODELNAME#</p>						ILLINOIS FED. AID PROJECT				

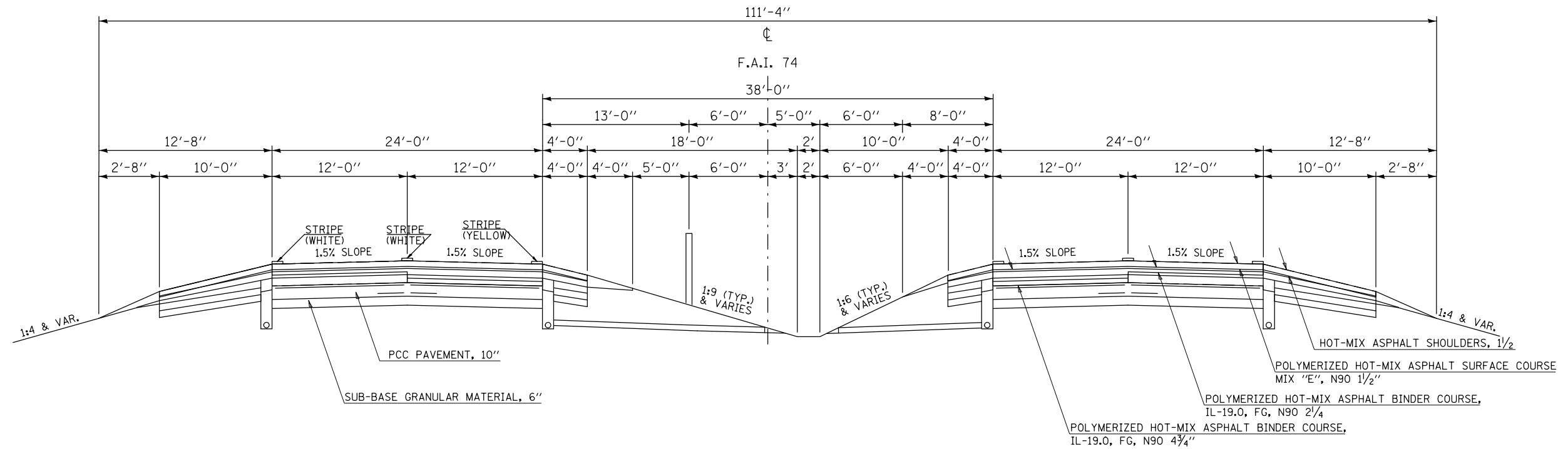
•CHAMPAIGN & VERMILION  
•57 & 74

SCALE: SHEET 2 OF 4 SHEETS STA. TO STA.

# 4 EXISTING TYPICAL SECTION F.A.I. 74

LOCATION MAP #2

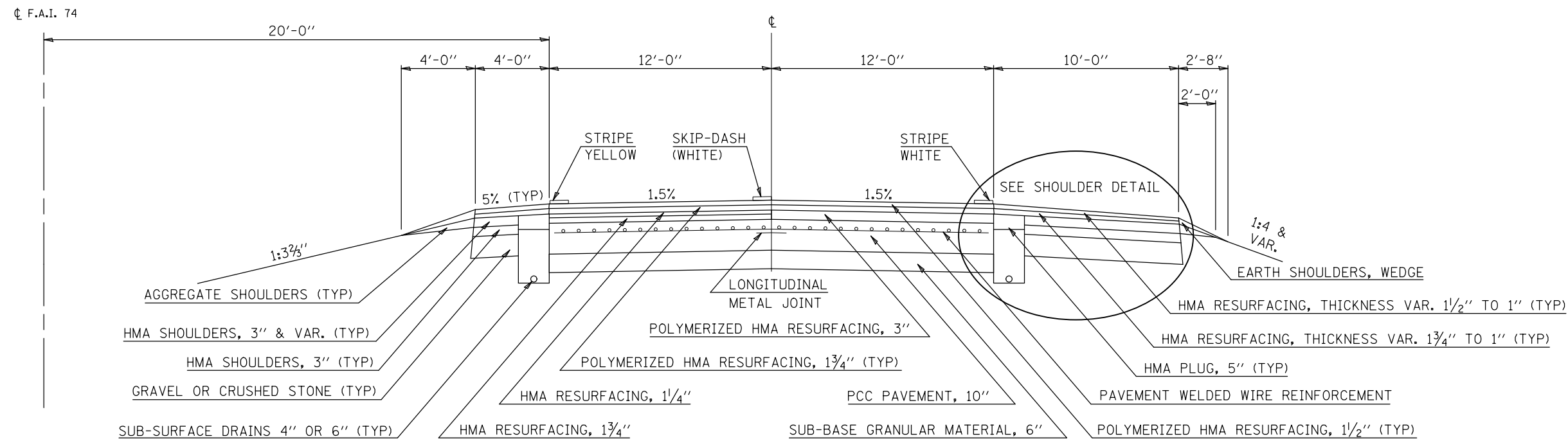
STATION TO STATION  
③ 1616+00.00 1683+00.00 ⑤



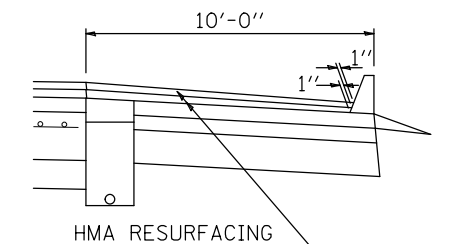
# 5 EXISTING TYPICAL SECTION F.A.I. 74

LOCATION MAP #2

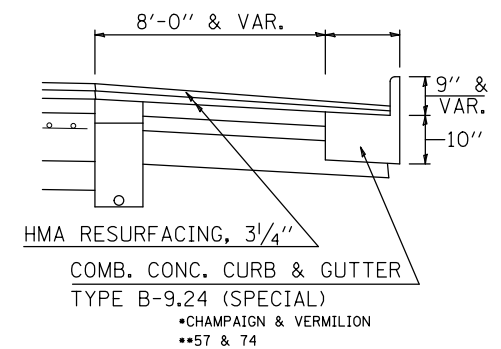
STATION TO STATION  
④ 1683+00.00 1720+00.00 ⑥



**SHOULDER DETAIL**  
LT. 1618+87.00 TO LT. 1627+88.22  
RT. 1624+65.29 TO RT. 1627+88.22



**SHOULDER DETAIL**  
LT. 1631.89.30 TO LT. 1647+92.36 (WB)  
RT. 1631+89.63 TO RT. 1647+36.45 (EB)



FILE NAME =	USER NAME = coombessf	DESIGNED -	REVISED -	<b>STATE OF ILLINOIS DEPARTMENT OF TRANSPORTATION</b>	<b>EXISTING TYPICAL CROSS SECTION F.A.I. 74</b>	F.A.I. RTE.	SECTION	COUNTY	TOTAL SHEETS	SHEET NO.	
pw:\IL\084EBIDINTEG.illinois.gov\PIWIDOT\Documents\IDOT Offices\District 5\Projects\0579\Drawings\Design\0570004-shr-typical.dwg	PLotted SCALE = 40.0000' / in.	CHECKED -	REVISED -			D5 CM PATCHING 2018-5			15	8	
\$MODELNAME\$	PLOT DATE = 12/11/2017	DATE -	REVISED -			SCALE: SHEET 3 OF 4 SHEETS STA. TO STA.		CONTRACT NO. 70D04			
						ILLINOIS FED. AID PROJECT					

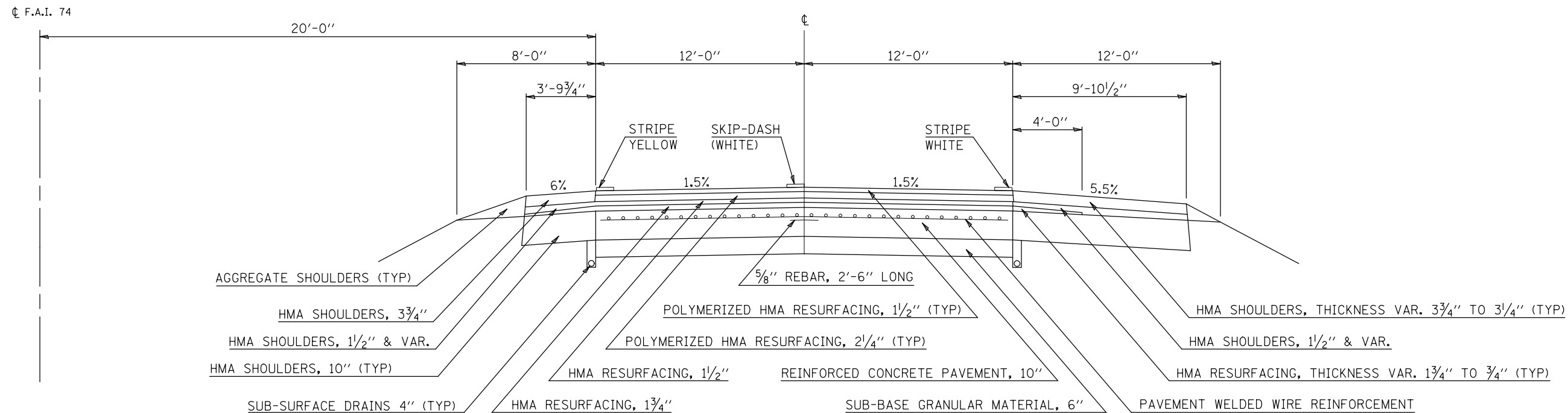


# 6 EXISTING TYPICAL SECTION

F.A.I. 74

STATION 5 1720+00.00 TO STATION 7 1908+00.00

LOCATION MAP #2

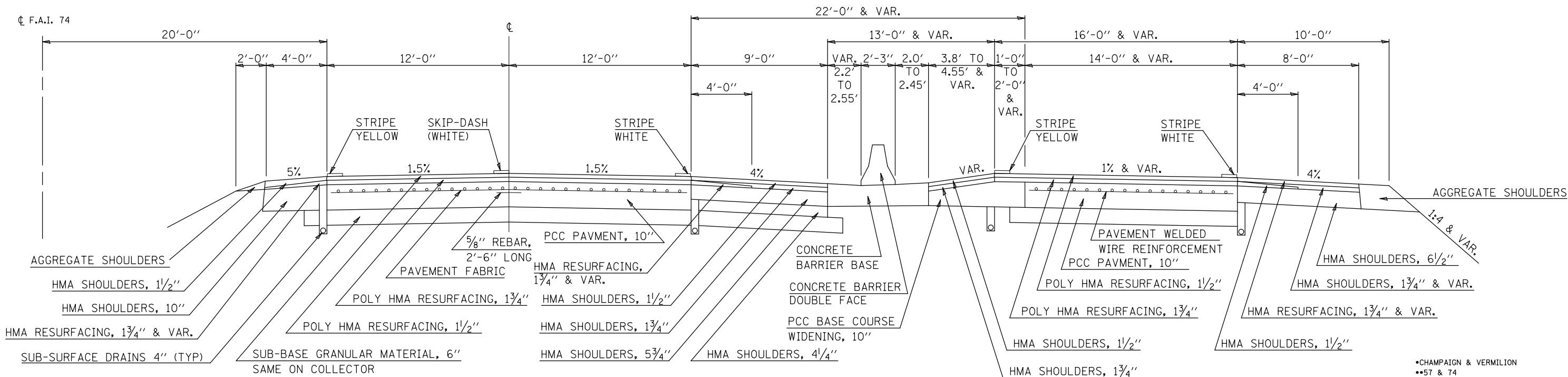


# 7 EXISTING TYPICAL SECTION

F.A.I. 74

STATION 6 1908+00.00 TO STATION 1951+50.00

LOCATION MAP #2



FILE NAME =	USER NAME = coombessf	DESIGNED -	REVISED -	<b>STATE OF ILLINOIS DEPARTMENT OF TRANSPORTATION</b>	<b>TYPICAL CROSS SECTIONS</b>			F.A.I. RE.	SECTION	COUNTY	TOTAL SHEETS	SHEET NO.
pw:\IL\084EBIDINTEG.illinois.gov\PIWIDOT\Documents\DOT Offices\District 5\Projects\057\CDRAWING\0570004-sh-typical.dwg	PLotted SCALE = 40.0000' / in.	CHECKED -	REVISED -					••	D5 CM PATCHING 2018-5	•	15	9
#MODELNAME#	PLOT DATE = 12/11/2017	DATE -	REVISED -					SCALE: SHEET 4 OF 4 SHEETS STA. TO STA.			CONTRACT NO. 70D04	
								ILLINOIS FED. AID PROJECT				

•CHAMPAIGN & VERMILION  
•57 & 74

# SCHEDULE OF QUANTITIES

## CLASS B 15" PATCHES

I-74 WESTBOUND CLASS B 15" PATCHES														
COUNTY	URBAN/ RURAL	STATION	MILEPOST	DIRECTION	LANE	LENGTH (FT)	WIDTH (FT)	44201031	44201035	44201037	44201299	44213200	44213204	44200050
								TYPE II 15.0" (SQ YD)	TYPE III 15.0" (SQ YD)	TYPE IV 15.0" (SQ YD)	DOWEL BARS 1 1/2" (EACH)	SAW CUTS (FT)	TIE BARS 3/4" (EACH)	WELDED WIRE REINFORCEMENT (SQ YD)
VERMILION	RURAL	1053+32.40	197.780	WB	PL	23	12	0.0	0.0	30.7	30	82.0	12	30.7
VERMILION	RURAL	1107+02.16	198.797	WB	PL	30	12	0.0	0.0	40.0	30	96.0	15	40.0
VERMILION	RURAL	1107+02.16	198.797	WB	DL	112	12	0.0	0.0	149.3	90	260.0	56	149.3
VERMILION	RURAL	1108+07.76	198.817	WB	DL	40	12	0.0	0.0	53.3	40	116.0	20	16.0
VERMILION	RURAL	1108+18.32	198.819	WB	PL	20	12	0.0	0.0	26.7	30	76.0	10	26.7
WESTBOUND SUB-TOTALS=								0.0	0.0	300.0	220.0	630.0	113.0	262.7
I-74 EASTBOUND CLASS B 15" PATCHES														
COUNTY	URBAN/ RURAL	STATION	MILEPOST	DIRECTION	LANE	LENGTH (FT)	WIDTH (FT)	44201031	44201035	44201037	44201299	44213200	44213204	44200050
								TYPE II 15.0" (SQ YD)	TYPE III 15.0" (SQ YD)	TYPE IV 15.0" (SQ YD)	DOWEL BARS 1 1/2" (EACH)	SAW CUTS (FT)	TIE BARS 3/4" (EACH)	WELDED WIRE REINFORCEMENT (SQ YD)
VERMILION	URBAN	1878+18.88	213.402	EB	DL	8	12	10.7	0.0	0.0	20	52.0	0	0.0
VERMILION	URBAN	1880+30.08	213.442	EB	DL	15	12	0.0	20.0	0.0	20	66.0	0	20.0
VERMILION	URBAN	1882+62.40	213.486	EB	DL	6	12	8.0	0.0	0.0	20	48.0	0	0.0
VERMILION	URBAN	1883+15.20	213.496	EB	PL	6	12	8.0	0.0	0.0	20	48.0	0	0.0
VERMILION	URBAN	1887+79.84	213.584	EB	DL	8	12	10.7	0.0	0.0	20	52.0	0	0.0
VERMILION	URBAN	1888+43.20	213.596	EB	PL	8	12	10.7	0.0	0.0	20	52.0	0	0.0
VERMILION	URBAN	1889+01.28	213.607	EB	PL	10	12	13.3	0.0	0.0	20	56.0	0	0.0
VERMILION	URBAN	1889+06.56	213.608	EB	DL	8	12	10.7	0.0	0.0	20	52.0	0	0.0
VERMILION	URBAN	1892+18.08	213.667	EB	DL	6	12	8.0	0.0	0.0	20	48.0	0	0.0
VERMILION	URBAN	1894+18.72	213.705	EB	DL	6	12	8.0	0.0	0.0	20	48.0	0	0.0
VERMILION	URBAN	1894+18.72	213.705	EB	PL	6	12	8.0	0.0	0.0	20	48.0	0	0.0
VERMILION	URBAN	1895+98.24	213.739	EB	DL	10	12	13.3	0.0	0.0	20	56.0	0	0.0
VERMILION	URBAN	1897+19.68	213.762	EB	PL	6	12	8.0	0.0	0.0	20	48.0	0	0.0
VERMILION	URBAN	1898+20.00	213.781	EB	PL	6	12	8.0	0.0	0.0	20	48.0	0	0.0
VERMILION	URBAN	1898+51.68	213.787	EB	PL	6	12	8.0	0.0	0.0	20	48.0	0	0.0
VERMILION	URBAN	1901+63.20	213.846	EB	DL	6	12	8.0	0.0	0.0	20	48.0	0	0.0
VERMILION	URBAN	1901+63.20	213.846	EB	RAMP	6	12	8.0	0.0	0.0	20	48.0	0	0.0
EASTBOUND SUB-TOTALS=								149.3	20.0	0.0	340.0	866.0	0.0	20.0
TOTALS=								150.0	20.0	300.0	560.0	1496.0	113.0	283.0
VERMILION COUNTY I-74 RURAL TOTALS=								0.0	0.0	300.0	220.0	630.0	113.0	263.0
VERMILION COUNTY I-74 URBAN TOTALS=								150.0	20.0	0.0	340.0	866.0	0.0	20.0

•CHAMPAIGN & VERMILION  
•57 & 74

FILE NAME =	USER NAME = coombessf	DESIGNED -	REVISED -	<b>STATE OF ILLINOIS DEPARTMENT OF TRANSPORTATION</b>	<b>SCHEDULE OF QUANTITIES</b>				F.A.I. RTE.	SECTION	COUNTY	TOTAL SHEETS	SHEET NO.
										D5 CM PATCHING 2018-5	•	15	10
												CONTRACT NO. 70D04	
\$MODELNAME\$	PLOT DATE = 12/11/2017	DATE -	REVISED -		SCALE:	SHEET 1	OF 3	SHEETS	STA.		TO STA.	ILLINOIS FED. AID PROJECT	

# SCHEDULE OF QUANTITIES

## CLASS B 17" PATCHES

I-74 WESTBOUND CLASS B 17" PATCHES														
COUNTY	URBAN/ RURAL	STATION	MILEPOST	DIRECTION	LANE	LENGTH (FT)	WIDTH (FT)	44201055 TYPE II 17.0" (SQ YD)	44201057 TYPE III 17.0" (SQ YD)	44201053 TYPE IV 17.0" (SQ YD)	44201299 DOWEL BARS 1 1/2" (EACH)	44213200 SAW CUTS (FT)	44213204 TIE BARS 3/4" (EACH)	44200050 WELDED WIRE REINFORCEMENT (SQ YD)
VERMILION	URBAN	1874+36.40	213.330	WB	DL	10	12	13.3	0.0	0.0	20	56.0	0	0.0
VERMILION	URBAN	1878+27.12	213.404	WB	DL	6	12	8.0	0.0	0.0	20	48.0	0	0.0
VERMILION	URBAN	1884+39.60	213.520	WB	DL	10	12	13.3	0.0	0.0	20	56.0	0	0.0
VERMILION	URBAN	1891+41.84	213.653	WB	DL	12	12	0.0	16.0	0.0	20	60.0	0	16.0
VERMILION	URBAN	1895+22.00	213.725	WB	PL	6	12	8.0	0.0	0.0	20	48.0	0	0.0
VERMILION	URBAN	1896+06.48	213.741	WB	PL	6	12	8.0	0.0	0.0	20	48.0	0	0.0
VERMILION	URBAN	1916+70.96	214.132	WB	DL	12	12	0.0	16.0	0.0	20	60.0	0	16.0
VERMILION	URBAN	1923+78.48	214.266	WB	DL	10	12	13.3	0.0	0.0	20	56.0	0	0.0
VERMILION	URBAN	1924+94.64	214.288	WB	DL	15	12	0.0	20.0	0.0	20	66.0	0	20.0
VERMILION	URBAN	1931+33.52	214.409	WB	DL	6	12	8.0	0.0	0.0	20	48.0	0	0.0
VERMILION	URBAN	1934+97.84	214.478	WB	DL	10	12	13.3	0.0	0.0	20	56.0	0	0.0
VERMILION	URBAN	1936+40.40	214.505	WB	PL	10	12	13.3	0.0	0.0	20	56.0	0	0.0
VERMILION	URBAN	1937+40.72	214.524	WB	DL	30	12	0.0	0.0	40.0	30	96.0	15	40.0
VERMILION	URBAN	1938+51.60	214.545	WB	DL	6	12	8.0	0.0	0.0	20	48.0	0	0.0
VERMILION	URBAN	1938+88.56	214.552	WB	DL	12	12	0.0	16.0	0.0	20	60.0	0	16.0
VERMILION	URBAN	1942+95.12	214.629	WB	DL	20	12	0.0	0.0	26.7	30	76.0	10	26.7
WESTBOUND SUB-TOTALS=								106.7	68.0	66.7	340.0	938.0	25.0	134.7
I-74 EASTBOUND CLASS B 17" PATCHES														
COUNTY	URBAN/ RURAL	STATION	MILEPOST	DIRECTION	LANE	LENGTH (FT)	WIDTH (FT)	44201055 TYPE II 17.0" (SQ YD)	44201057 TYPE III 17.0" (SQ YD)	44201053 TYPE IV 17.0" (SQ YD)	44201299 DOWEL BARS 1 1/2" (EACH)	44213200 SAW CUTS (FT)	44213204 TIE BARS 3/4" (EACH)	44200050 WELDED WIRE REINFORCEMENT (SQ YD)
VERMILION	URBAN	1928+56.00	214.356	EB	PL	6	12	8.0	0.0	0.0	20	48.0	0	0.0
VERMILION	URBAN	1928+56.00	214.356	EB	DL	10	12	13.3	0.0	0.0	20	56.0	0	0.0
VERMILION	URBAN	1931+14.72	214.405	EB	DL	10	12	13.3	0.0	0.0	20	56.0	0	0.0
VERMILION	URBAN	1935+00.16	214.478	EB	DL	10	12	13.3	0.0	0.0	20	56.0	0	0.0
VERMILION	URBAN	1935+74.08	214.492	EB	DL	6	12	8.0	0.0	0.0	20	48.0	0	0.0
VERMILION	URBAN	1938+59.20	214.546	EB	DL	6	12	8.0	0.0	0.0	20	48.0	0	0.0
EASTBOUND SUB-TOTALS=								64.0	0.0	0.0	120.0	312.0	0.0	0.0
TOTALS=								171.0	68.0	67.0	460.0	1250.0	25.0	135.0
VERMILION COUNTY I-74 RURAL TOTALS=								0.0	0.0	0.0	0.0	0.0	0.0	0.0
VERMILION COUNTY I-74 URBAN TOTALS=								171.0	68.0	67.0	460.0	1250.0	25.0	135.0

•CHAMPAIGN & VERMILION  
•57 & 74

FILE NAME =	USER NAME = coombessf	DESIGNED -	REVISED -	<b>STATE OF ILLINOIS DEPARTMENT OF TRANSPORTATION</b>	<b>SCHEDULE OF QUANTITIES</b>	F.A.I. RTE.	SECTION	COUNTY	TOTAL SHEETS	SHEET NO.	
p:\11\084EBIDINTEG.illinois.gov\PIWIDOT\Documents\DOT Offices\District 5\Projects\0570004\Drawings\Design\0570004-shr-schedule.dwg						••	D5 CM PATCHING 2018-5	•	15	11	
PLOT SCALE = 40.0000' / in.						CHECKED -	REVISED -	CONTRACT NO. 70D04			
PLOT DATE = 12/11/2017						DATE -	REVISED -	ILLINOIS FED. AID PROJECT			
						SCALE:	SHEET 2	OF 3	SHEETS	STA. TO STA.	

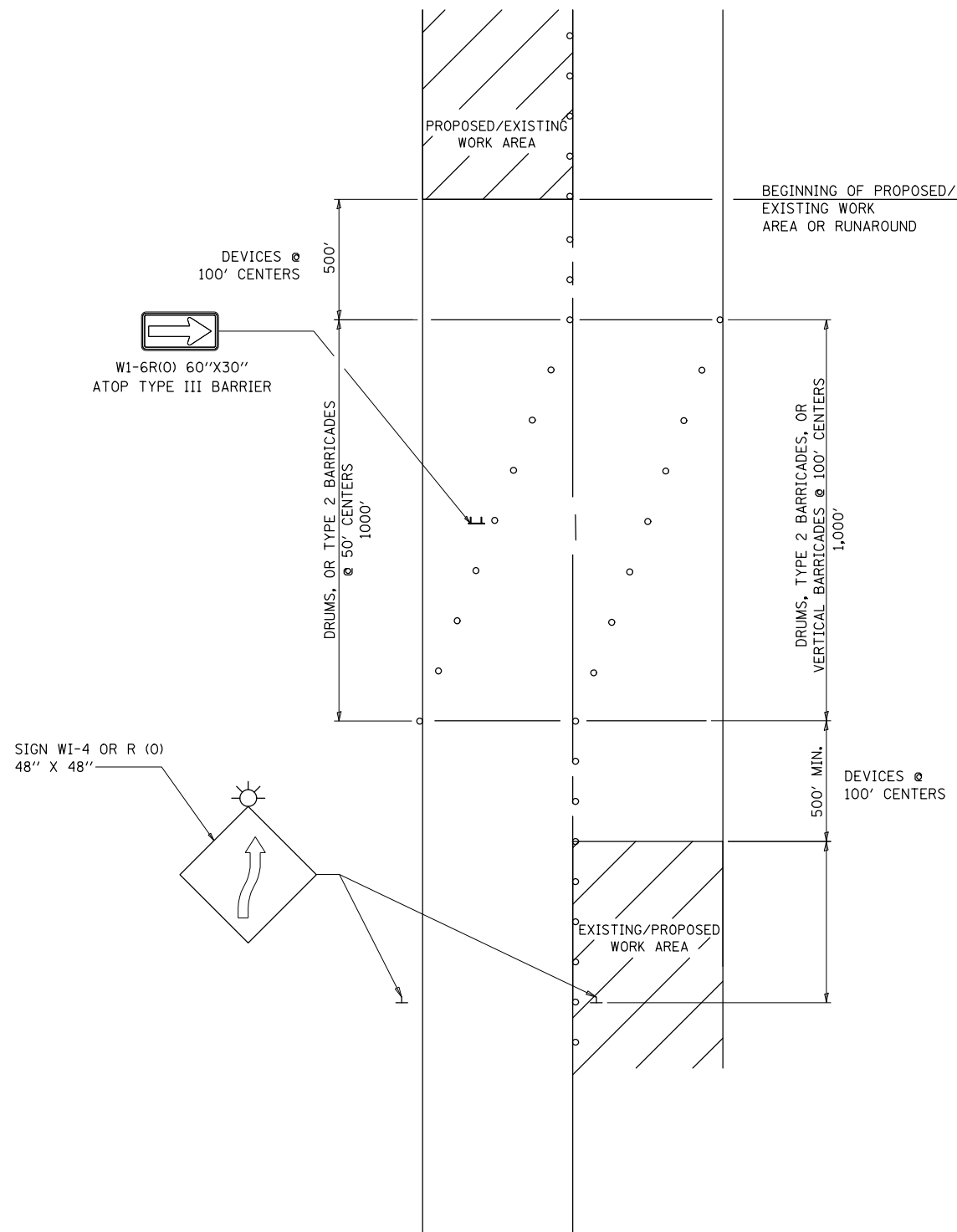
## SCHEDULE OF QUANTITIES

### CLASS A 12" (SPECIAL) PATCHES

I-57 NORTHBOUND CLASS A 12" (SPECIAL) PATCHES											
COUNTY	URBAN/ RURAL	STATION	MILEPOST	DIRECTION	LANE	LENGTH  (FT)	WIDTH  (FT)	X1700052 TYPE II 12.0" (SQ YD)	44213200 SAW CUTS  (FT)	44213204 TIE BARS 3/4" (EACH)	44213000 PATCHING REINFORCEMENT (SQ YD)
CHAMPAIGN	RURAL	1095+40.26	243.605	NB	DL	6	12	8.0	36.0	24	8.0
CHAMPAIGN	RURAL	1195+30.02	245.497	NB	DL	6	12	8.0	36.0	24	8.0
SUB-TOTALS=								16.0	72.0	48.0	16.0
I-57 SOUTHBOUND CLASS A 12" (SPECIAL) PATCHES											
COUNTY	URBAN/ RURAL	STATION	MILEPOST	DIRECTION	LANE	LENGTH  (FT)	WIDTH  (FT)	X1700052 TYPE II 12.0" (SQ YD)	44213200 SAW CUTS  (FT)	44213204 TIE BARS 3/4" (EACH)	44213000 PATCHING REINFORCEMENT (SQ YD)
CHAMPAIGN	RURAL	1123+80.90	247.185	SB	DL	6	12	8.0	36.0	24	8.0
CHAMPAIGN	RURAL	1184+21.22	248.329	SB	PL	8	12	10.7	40.0	24	10.7
CHAMPAIGN	RURAL	1184+21.22	248.329	SB	DL	8	12	10.7	40.0	24	10.7
CHAMPAIGN	RURAL	1223+33.70	249.070	SB	PL	8	12	10.7	40.0	24	10.7
CHAMPAIGN	RURAL	1223+33.70	249.070	SB	DL	8	12	10.7	40.0	24	10.7
CHAMPAIGN	RURAL	1473+50.34	253.808	SB	DL	6	12	8.0	36.0	24	8.0
SUB-TOTALS=								58.7	232.0	144.0	58.7
TOTALS=								74.7	304.0	192.0	74.7
CHAMPAIGN COUNTY I-57 RURAL TOTALS=								75.0	304.0	192.0	75.0

•CHAMPAIGN & VERMILION  
•57 & 74

FILE NAME =	USER NAME = coombessf	DESIGNED -	REVISED -	<b>STATE OF ILLINOIS DEPARTMENT OF TRANSPORTATION</b>	<b>SCHEDULE OF QUANTITIES</b>	F.A.I. RTE.	SECTION	COUNTY	TOTAL SHEETS	SHEET NO.	
pw:\IL\084EBIDINTEG.illinois.gov\PIWIDOT\Documents\DOT Offices\District 5\Projects\0570004\Drawings\Design\0570004-sh-t-schedule.dwg		DRAWN -	REVISED -			••	D5 CM PATCHING 2018-5	•	15	12	
\$MODELNAME\$	PLOT SCALE = 40.0000' / in.	CHECKED -	REVISED -			CONTRACT NO. 70D04					
	PLOT DATE = 12/14/2017	DATE -	REVISED -			SCALE:	SHEET 3	OF 3	SHEETS	STA.	TO STA.



- NOTES:**
1. THIS DETAIL ALSO APPLIES WHEN WORK IS BEING PERFORMED IN THE LEFT LANE PRIOR TO THE RIGHT LANE. UNDER THESE CONDITIONS, THE SETUP WOULD BE A MIRROR IMAGE TO WHAT IS SHOWN.
  2. ALL DEVICES SHALL CONFORM TO STD. 701901
  3. ALL CONFLICTING OR UNNECESSARY SIGNS SHALL BE REMOVED OR COVERED.
  4. ALL DEVICES REQUIRE STEADY BURN MONODIRECTIONAL LIGHTS IF WORK INVOLVES A NIGHT-TIME CLOSURE.
  5. CONES MAY BE SUBSTITUTED FOR BARRICADES OR DRUMS AT HALF THE SPACING DURING DAY OPERATIONS.

•CHAMPAIGN & VERMILION  
•57 & 74

**DISTRICT 5 DETAIL NO. 70100100**

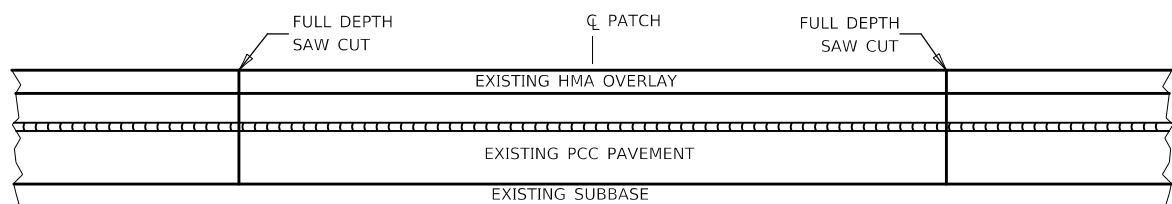
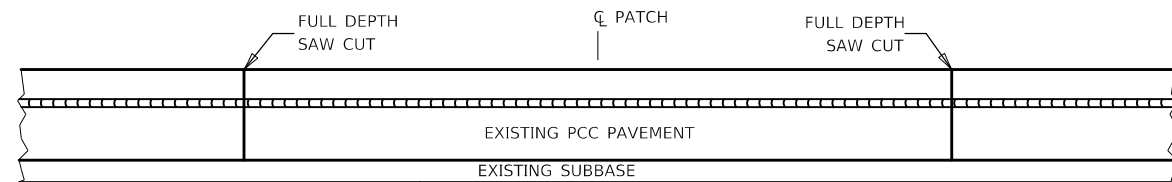
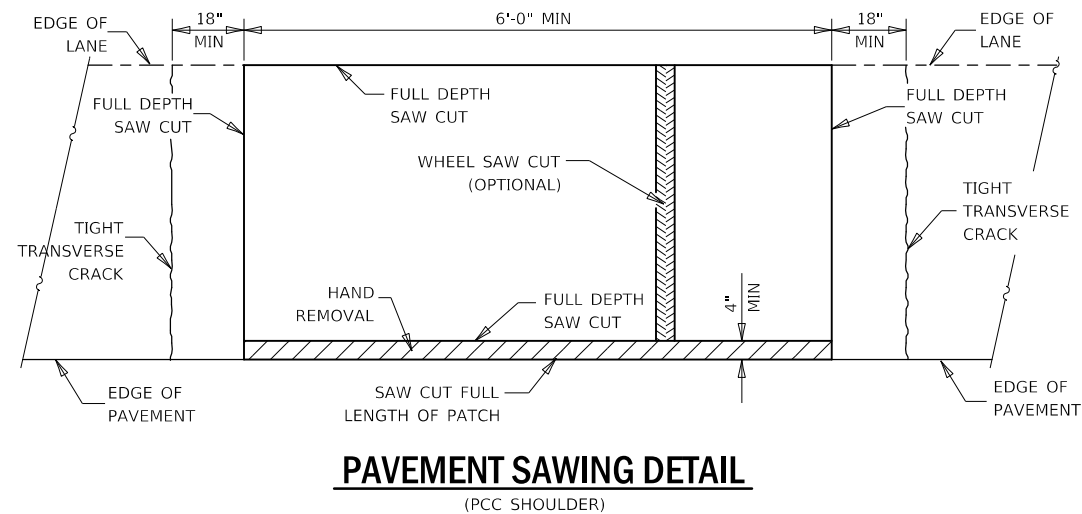
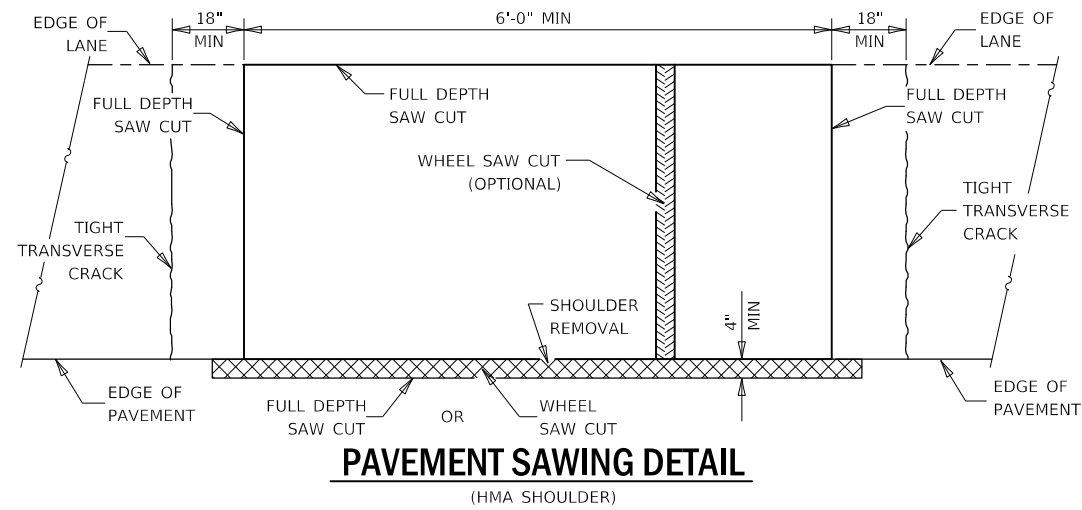
FILE NAME =	USER NAME = coombessf	DESIGNED -	REVISED -
pw:\IL\084EBIDINTEG\illinois.gov\PWIDOT\Documents\DOT Offices\District 5\Projects\0570004\DRAWING\Design\0570004-sh-t-schedule.dwg		CHECKED -	REVISED -
		DATE -	REVISED -

**STATE OF ILLINOIS  
DEPARTMENT OF TRANSPORTATION**

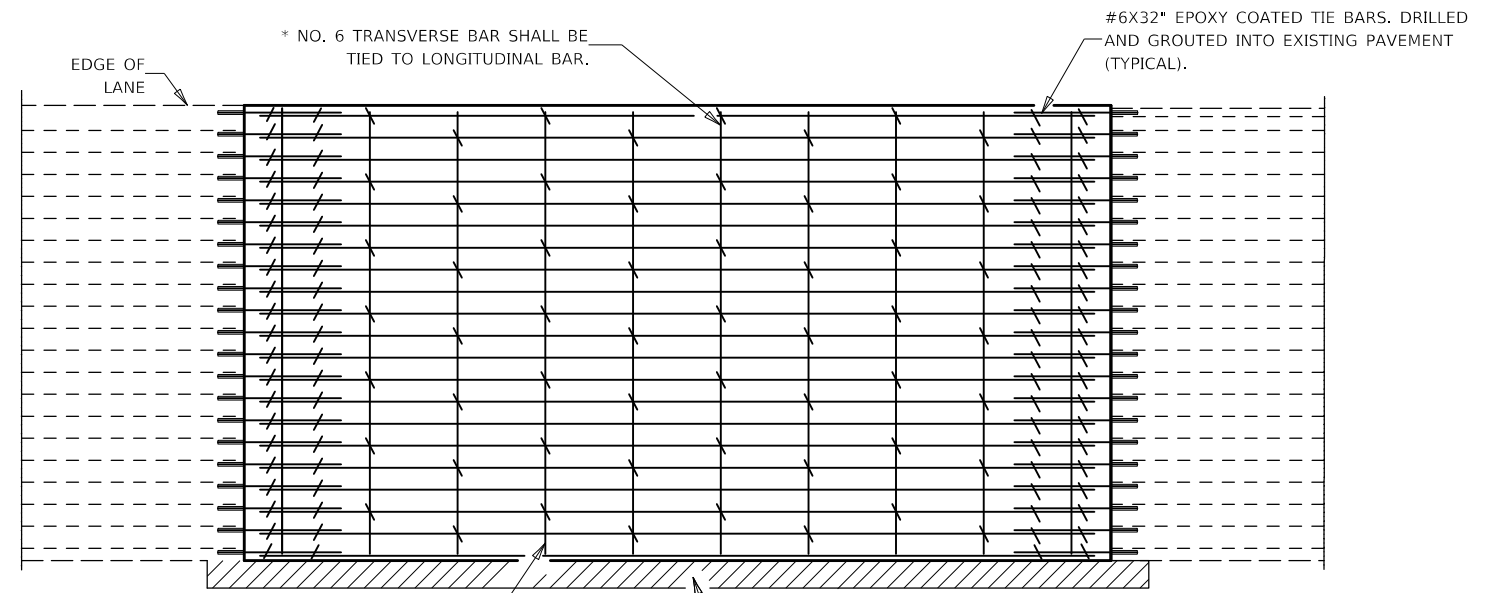
**SWITCHBACK**

SCALE: SHEET NO. 1 OF 1 SHEETS STA. TO STA.

F.A.I. RTE.	SECTION	COUNTY	TOTAL SHEETS	SHEET NO.
••	D5 CM PATCHING 2018-5	•	15	13
FED. ROAD DIST. NO.			ILLINOIS FED. AID PROJECT	
			CONTRACT NO. 70D04	

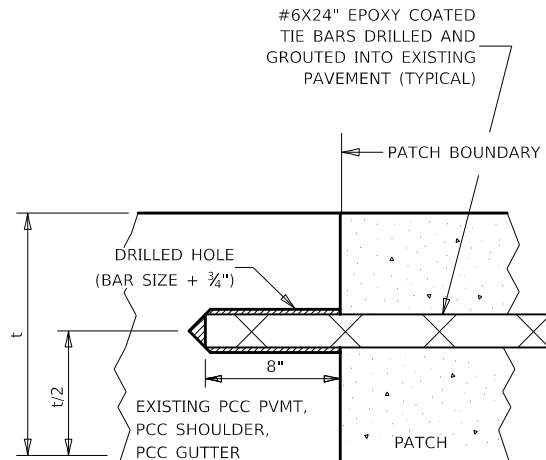


**PAVEMENT SAWING DETAIL FOR CLASS A PATCHING (CRC PAVEMENT)**



TRANSVERSE REBAR SHALL EXTEND TO OUTER LONGITUDINAL REBAR WHILE PROVIDING A MINIMUM 3" CLEARANCE FROM EXISTING PAVEMENT EDGE

**PAVEMENT REINFORCEMENT DETAIL**



**LONGITUDINAL CONSTRUCTION JOINT**

PATCHES MORE THAN 20' IN LENGTH SHALL BE TIED TO ADJACENT PAVEMENT, PCC SHOULDERS OR PCC CURB AND GUTTER WITH #6x24" EPOXY COATED TIE BARS AT 24" CENTERS.

**NOTES:**

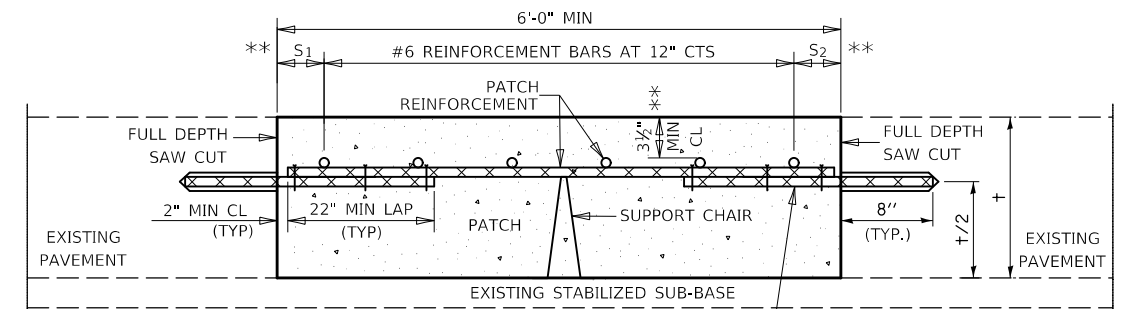
EXISTING LONGITUDINAL REINFORCEMENT SPACING: ±6".

SPACING OF NEW LONGITUDINAL REINFORCEMENT AND NEW LONGITUDINAL TIE BARS SHALL MATCH SPACING OF EXISTING REINFORCEMENT AND SHALL BE TIED TOGETHER WITH A MINIMUM OF TWO TIES PER BAR.

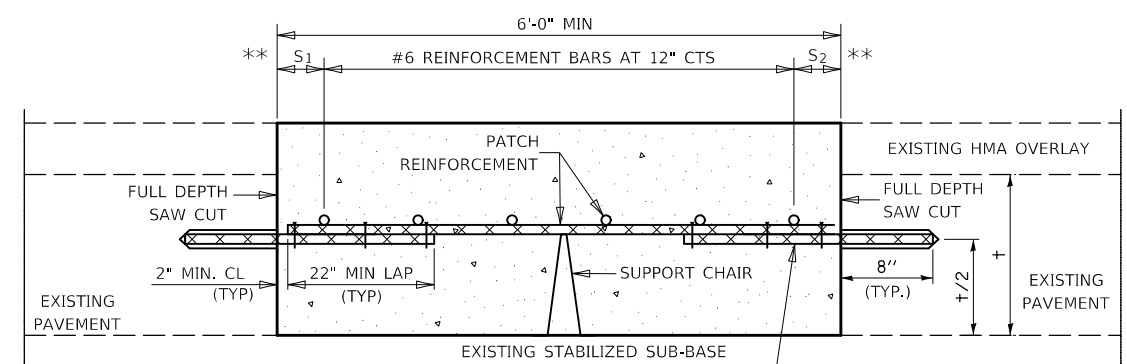
SUPPORT CHAIRS SHALL BE REQUIRED WHENEVER PATCH LENGTH EXCEEDS 6'-0"

\* EVERY THIRD INTERSECTION MUST BE TIED. WHEN THE MINIMUM CLEARANCE CANNOT BE OBTAINED WITH THE TRANSVERSE REBAR ON TOP, THEN THE TRANSVERSE REBAR SHALL BE TIED TO THE BOTTOM OF THE LONGITUDINAL REBAR.

\*\* VARIABLES WHERE S<sub>1</sub> AND S<sub>2</sub> ARE 2 1/2" MIN. AND 12" MAX.



**WITHOUT HMA OVERLAY**



**WITH HMA OVERLAY**

USER NAME = coombessf	DESIGNED -	REVISED -
PLOT SCALE = 100,0000' / in.	DRAWN -	REVISED -
PLOT DATE = 12/14/2017	CHECKED -	REVISED -
	DATE -	REVISED -

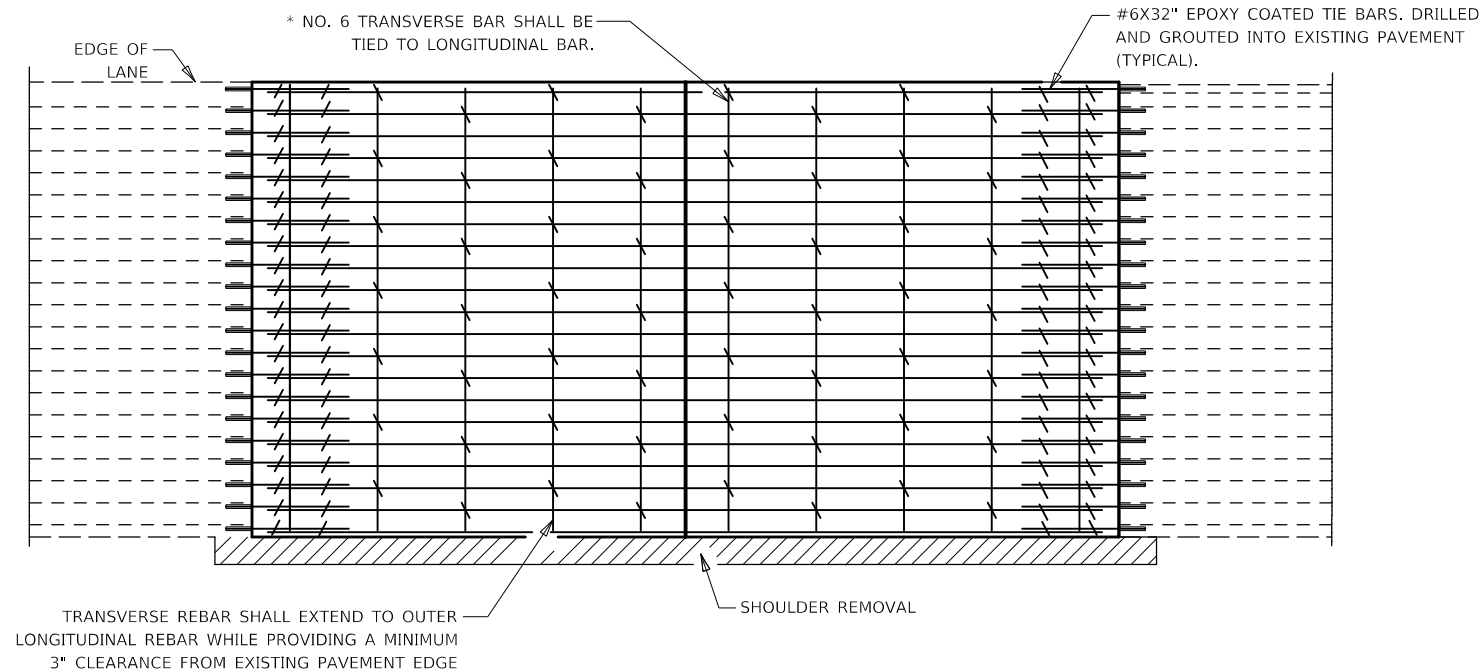
STATE OF ILLINOIS  
DEPARTMENT OF TRANSPORTATION

CLASS A "SPECIAL" PATCHING DETAILS

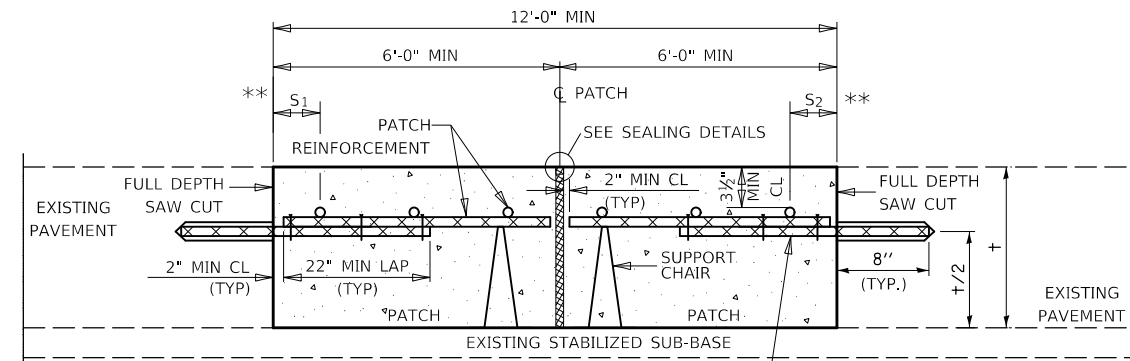
SCALE: SHEET 1 OF 2 SHEETS STA. TO STA.

F.A.I. RTE.	SECTION	COUNTY	TOTAL SHEETS	SHEET NO.
**	D5 CM PATCHING 2018-5	*	15	14
			CONTRACT NO. 70D04	
ILLINOIS FED. AID PROJECT				

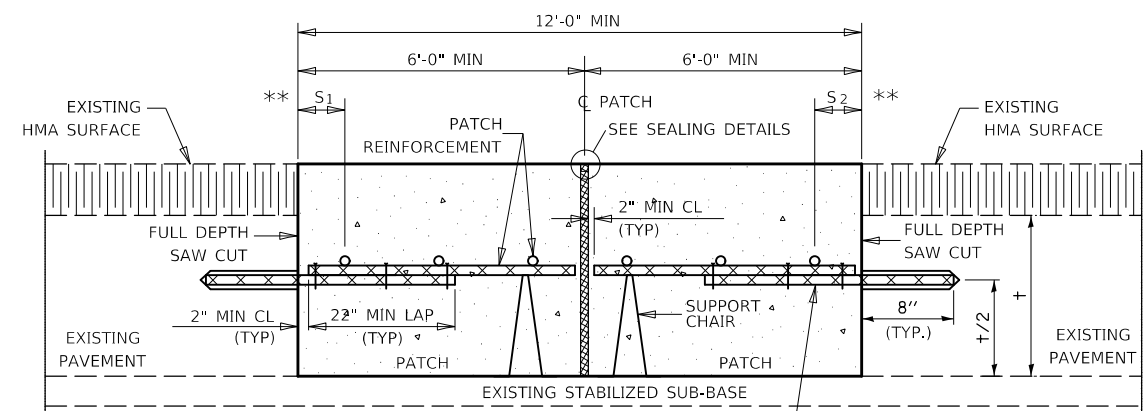
•CHAMPAIGN & VERMILION  
•57 & 74



**PAVEMENT REINFORCEMENT DETAIL**

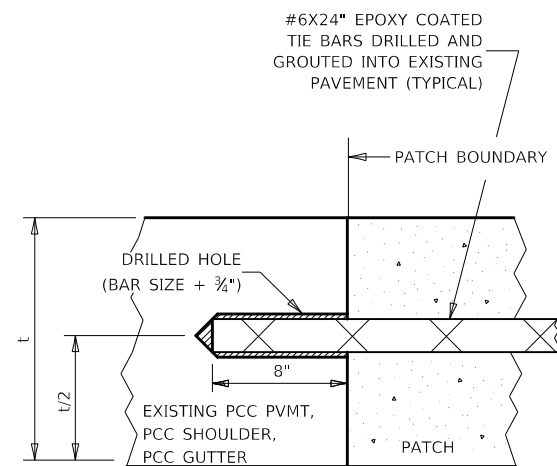


**WITHOUT HMA OVERLAY**



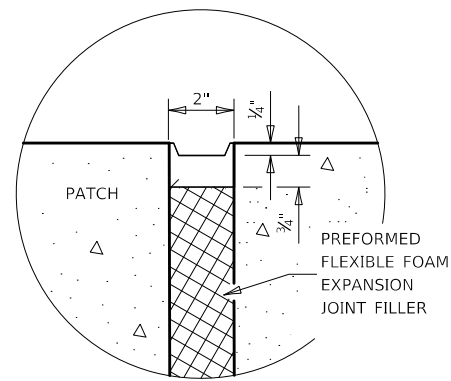
**WITH HMA OVERLAY**

**CLASS A PATCH WITH EXPANSION JOINT**

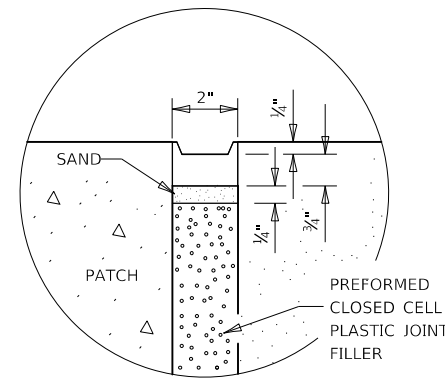


**LONGITUDINAL CONSTRUCTION JOINT**

PATCHES MORE THAN 20' IN LENGTH SHALL BE TIED TO ADJACENT PAVEMENT, PCC SHOULDERS OR PCC CURB AND GUTTER WITH #6X24" EPOXY COATED TIE BARS AT 36" CENTERS.



**SEALING DETAIL**



**SEALING DETAIL**

**NOTES:**

- EXISTING LONGITUDINAL REINFORCEMENT SPACING;  $\pm 6\frac{1}{2}$ ".
- SPACING OF NEW LONGITUDINAL REINFORCEMENT AND NEW LONGITUDINAL TIE BARS SHALL MATCH SPACING OF EXISTING REINFORCEMENT AND SHALL BE TIED TOGETHER WITH A MINIMUM OF TWO TIES PER BAR.
- SUPPORT CHAIRS SHALL BE REQUIRED WHENEVER PATCH LENGTH EXCEEDS 6'-0"
- \* EVERY THIRD INTERSECTION MUST BE TIED. WHEN THE MINIMUM CLEARANCE CANNOT BE OBTAINED WITH THE TRANSVERSE REBAR ON TOP, THEN THE TRANSVERSE REBAR SHALL BE TIED TO THE BOTTOM OF THE LONGITUDINAL REBAR.
- \*\* VARIABLES WHERE S<sub>1</sub> AND S<sub>2</sub> ARE 2½" MIN. AND 12" MAX.

•CHAMPAIGN & VERMILION  
••57 & 74

USER NAME = coombessf PLOT SCALE = 100,0000' / in. PLOT DATE = 12/14/2017	DESIGNED - DRAWN -	REVISED - REVISED -	<b>STATE OF ILLINOIS DEPARTMENT OF TRANSPORTATION</b>	<b>CLASS A "SPECIAL" PATCHING DETAILS</b>		F.A.I. RTE. SECTION COUNTY	TOTAL SHEETS SHEET NO.
	CHECKED - DATE -	REVISED - REVISED -		SCALE: SHEET 2 OF 2 SHEETS STA. TO STA.		COUNTY COUNTY	TOTAL SHEETS SHEET NO.
						CONTRACT NO. 70D04 ILLINOIS FED. AID PROJECT	