

STATE OF ILLINOIS
DEPARTMENT OF TRANSPORTATION

F.A.P. RTE.	SECTION	COUNTY	TOTAL SHEETS	SHEET NO.
315	(22) BRS	HANCOCK	5	1
		ILLINOIS	CONTRACT NO. 72J95	

D-96-059-17



LOCATION OF SECTION INDICATED THUS: - [black rectangle]

PROPOSED HIGHWAY PLANS

FAP ROUTE 315 (US 136)
SECTION (22) BRS

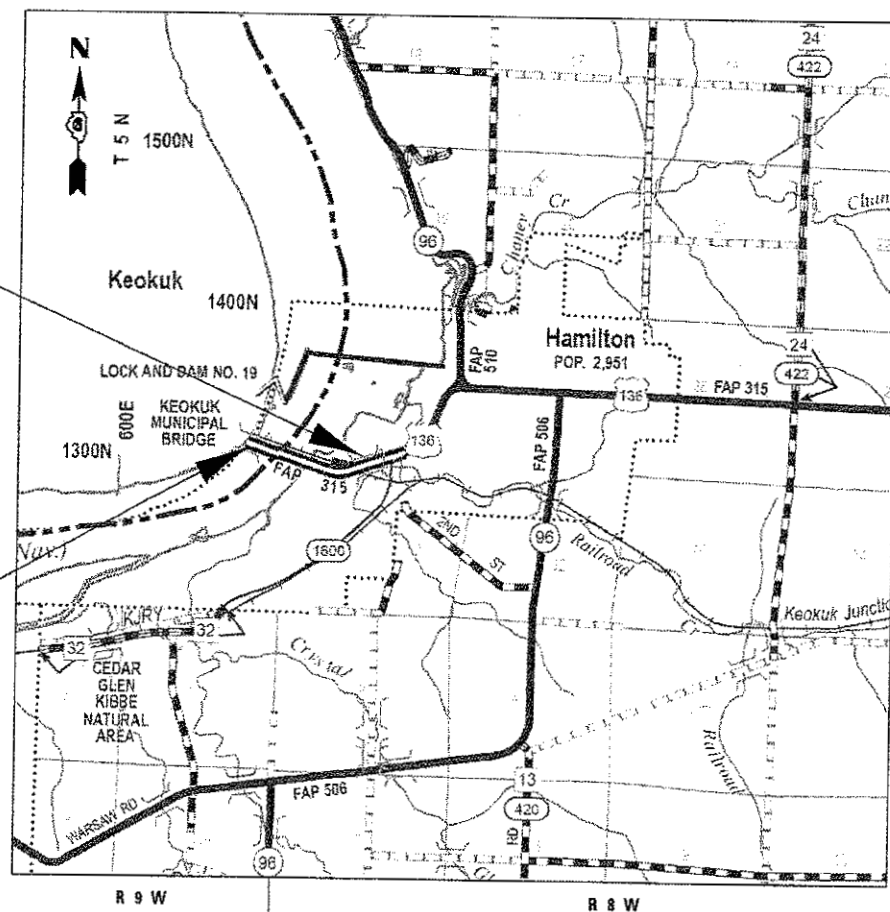
BRIDGE DECK SEALING
HANCOCK COUNTY

C-96-059-17

FOR INDEX OF SHEETS, SEE SHEET NO. 2

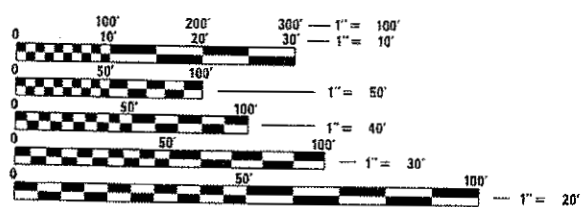
HIGHWAY CLASSIFICATION

FAP 315 (US 136)
ADT: 11,500 (PV = 92.82%)
426 (SU = 3.70%)
400 (MU = 3.48%)
CRS = 7.6 (2015)



S.N. 034-0001
STA. 116+36.98
STA. 118+44.48

S.N. 034-0062
STA. 63+70.00
STA. 97+10.00



FULL SIZE PLANS HAVE BEEN PREPARED USING STANDARD ENGINEERING SCALES. REDUCED SIZED PLANS WILL NOT CONFORM TO STANDARD SCALES. IN MAKING MEASUREMENTS ON REDUCED PLANS, THE ABOVE SCALES MAY BE USED.

J.U.L.I.E.
JOINT UTILITY LOCATION INFORMATION FOR EXCAVATION
1-800-892-0123
OR 811

PROJECT ENGINEER: JAY EDWARDS (217) 785-0597
PROJECT MANAGER: JONATHAN COX (217) 782-1378

CONTRACT NO. 72J95

GROSS LENGTH = 5474.48 FT. = 1.037 MILE
NET LENGTH = 3747.50 FT. = 0.672 MILE

STATE OF ILLINOIS
DEPARTMENT OF TRANSPORTATION

SUBMITTED 5 December 2017

[Signature]
REGIONAL ENGINEER

Feb 2 2018
ENGINEER OF DESIGN AND ENVIRONMENT

[Signature]
DIRECTOR OF PROGRAM DEVELOPMENT

2

PRINTED BY THE AUTHORITY
OF THE STATE OF ILLINOIS

INDEX OF SHEETS

1. COVER SHEETS
2. GENERAL NOTES
3. SUMMARY OF QUANTITIES
4. SCHEDULES
5. TYPICAL SECTIONS

HIGHWAY STANDARDS

000001-06
 001006
 701422-10
 701606-10
 701901-07

GENERAL NOTES

1. THE BRIDGE DECK CONCRETE SEALER SHALL BE APPLIED TO THE ENTIRE TOP SURFACE OF THE DECK, INCLUDING THE INSIDE FACES AND TOPS OF THE PARAPETS.
2. WATER BASED BRIDGE DECK CONCRETE SEALERS WILL NOT BE ALLOWED.
3. EXISTING PAVEMENT MARKINGS SHALL BE TEMPORARILY COVERED PRIOR TO APPLICATION OF THE DECK SURFACE TREATMENT, TO PREVENT THE MATERIAL FROM BEING APPLIED TO THE MARKINGS. THE TEMPORARY COVERING SHALL BE REMOVED AFTER APPLICATION OF THE DECK SURFACE TREATMENT AND PRIOR TO OPENING TO TRAFFIC. COST INCLUDED WITH CONCRETE SEALER.
4. SPRAYING OPERATIONS OVER THE RAILROAD TRACKS SHALL STOP WHEN TRAINS ARE PASSING UNDER THE BRIDGE. IF ANY TRAINS ARE PARKED UNDER THE BRIDGE DURING SEALING APPLICATIONS, EXTRA CAUTION SHALL BE USED DURING SPRAYING TO AVOID OVER SPRAY THAT COULD GET ONTO TRAINS.

COMMITMENTS

COMMITMENTS ARE NOT TO BE ALTERED WITHOUT THE WRITTEN APPROVAL OF ALL PARTIES TO WHICH THE COMMITMENT WAS MADE.

1. THE RESIDENT ENGINEER SHALL CONTACT STUDIES AND PLANS CONCERNING ANY MAJOR PLAN CHANGE, TO MAKE SURE NO PREVIOUS COMMITMENTS (NOT LISTED) WERE MADE AFFECTING THE DESIGN AND ALLOW AN IMPROVED DESIGN FOR FUTURE PROJECTS.

DISTRICT SIX	
EXAMINED	November 6 th 20 17
<i>John C. Nayansund</i>	
OPERATIONS ENGINEER	

EXAMINED	November 8 20 17
<i>Jeffrey P. May</i>	
PROGRAM DEVELOPMENT ENGINEER	

EXAMINED	Nov 17 th 20 17
<i>Scott Schramm</i>	
PROJECT IMPLEMENTATION ENGINEER	

MODEL: Default
 FILE NAME: I:\PROJECTS\108\EBID\NTG\Illinois.gov\FWIDOT\Documents\IUDOT_Offices\District Six\Project\108\EBID\NTG\0872195_CADD\DATA\CAD\Sheet_0872195.dwg

	USER NAME = coxjw PLOT SCALE = 2.0000' / in. PLOT DATE = 11/20/2017	DESIGNED - DRAWN - CHECKED - DATE -	REVISED - REVISED - REVISED - REVISED -	STATE OF ILLINOIS DEPARTMENT OF TRANSPORTATION	GENERAL NOTES	SCALE:	SHEET OF SHEETS STA. TO STA.	F.A.P. RTE. 315	SECTION (22) BRS	COUNTY HANCOCK	TOTAL SHEETS 5	SHEET NO. 2
ILLINOIS FED. AID PROJECT CONTRACT NO. 72195												

MODEL: Default
 FILE NAME: P:\VILL084\BID\ITEG_illinois.pwr.P\WDOT\Documents\DOT_Offices\Illinois\6\Projects\1672795\CAD\Drawings\1672795-111-500.dgn

CODE NO.	ITEM	UNIT	TOTAL QUANTITY	CONSTRUCTION CODE		
				6-01122-0000		6-01123-0000
				ILLINOIS	IOWA	ILLINOIS
				100% STATE	100% IOWA	100% STATE
				BRIDGE	BRIDGE	BRIDGE
				0047	0047	0047
				034-0062	034-0062	034-0001
67100100	MOBILIZATION	L SUM	1	0.4	0.4	0.2
70100320	TRAFFIC CONTROL AND PROTECTION, STANDARD 701422	L SUM	1	0.4	0.4	0.2
70102625	TRAFFIC CONTROL AND PROTECTION, STANDARD 701606	L SUM	1	0.5	0.5	0
X5870015	BRIDGE DECK CONCRETE SEALER	SQ FT	276,333	128,331	128,331	19,671
Z0048665	RAILROAD PROTECTIVE LIABILITY INSURANCE	L SUM	1	0	0	1

USER NAME = coxjw	DESIGNED -	REVISED -
	DRAWN -	REVISED -
PLOT SCALE = 100.0000 ' / in.	CHECKED -	REVISED -
PLOT DATE = 12/11/2017	DATE -	REVISED -

**STATE OF ILLINOIS
 DEPARTMENT OF TRANSPORTATION**

SUMMARY OF QUANTITIES

SCALE: SHEET OF SHEETS STA. TO STA.

F.A.P. RTE.	SECTION	COUNTY	TOTAL SHEETS	SHEET NO.
315	(22) BRS	HANCOCK	5	3
ILLINOIS			CONTRACT NO. 72J95	
FED. AID PROJECT				

BRIDGE DECK CONCRETE SEALER SCHEDULE					
LOCATION			LENGTH	WIDTH	BRIDGE DECK CONCRETE SEALER
STATION	TO	STATION	FOOT	FOOT	SQ FT
US 136 - S.N. 034-0062					
63+70.00	TO	93+10.00	2,940	87.3	256,662
US 136 - S.N. 034-0001					
116+36.98	TO	118+44.48	207.5	94.8	19,671
				TOTAL =	276,333

MODEL: Default
FILE NAME: p:\u0000\BID\NTEC\Illinois\gov\PIW\DOT\Documents\DOT_Offices\DI\artct @\Projects\0672\95\CADD\BRI\CAD\sheet\0672\95-ahr-schedule.dgn

USER NAME = coxte	DESIGNED -	REVISED -	STATE OF ILLINOIS DEPARTMENT OF TRANSPORTATION	SCHEDULE			F.A.P. RTE.	SECTION	COUNTY	TOTAL SHEETS	SHEET NO.
PLOT SCALE = 100,0000 ' / in.	DRAWN -	REVISED -					315	(22) BRS	HANCOCK	5	4
PLOT DATE = 12/8/2017	CHECKED -	REVISED -		SCALE: SHEET OF SHEETS STA. TO STA.			CONTRACT NO. 72J95				
	DATE -	REVISED -					ILLINOIS FED. AID PROJECT				

