

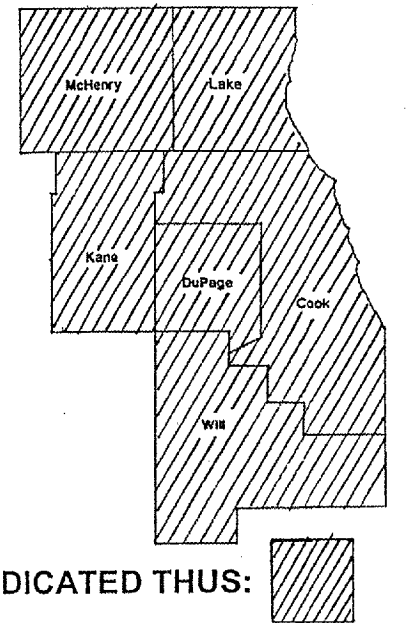
ROUTE	SECTION	COUNTY	TOTAL SHEETS	SHEET NUMBER
VARIOUS	2005-0531	VARIOUS	3	1

CONTRACT 60A31
D-91-030-06

STATE OF ILLINOIS
DEPARTMENT OF TRANSPORTATION
DIVISION OF HIGHWAYS
DISTRICT ONE

PROPOSED HIGHWAY PLANS

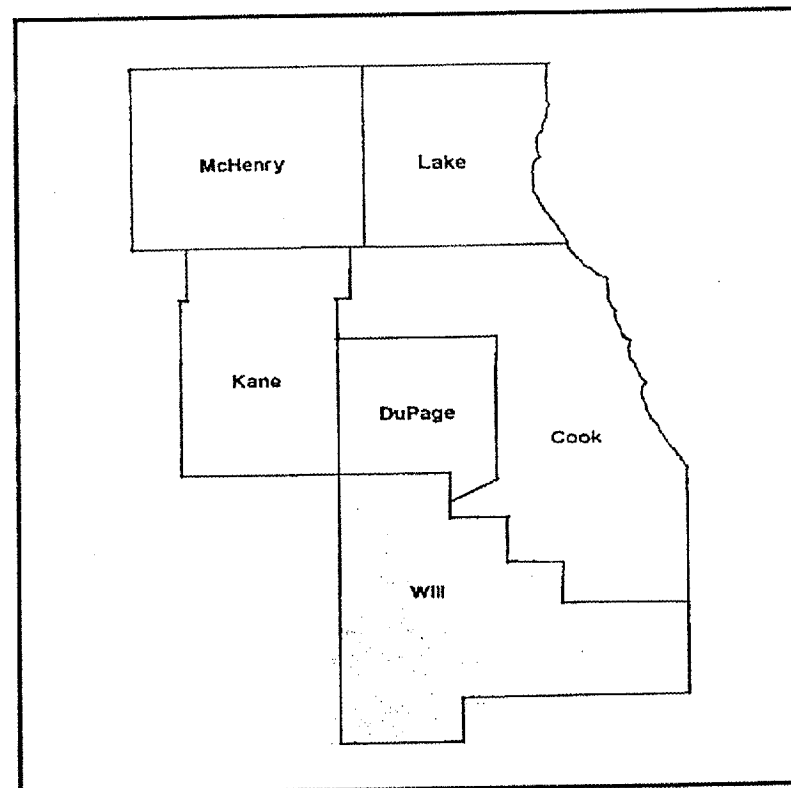
ROUTE: VARIOUS
SECTION 2005-0531
WEED CONTROL SELECTIVE AND NON-SELECTIVE
VARIOUS COUNTIES
C-91-030-06



LOCATION OF IMPROVEMENT INDICATED THUS: 

FOR INDEX OF SHEETS SEE PAGE 2

IMPROVEMENT IS IN VARIOUS
LOCATIONS WITHIN DISTRICT
ONE



DISTRICT ONE BUREAU OF MAINTENANCE: J. STUMPNER
MAINTENANCE LANDSCAPE DESIGNER: R. WANNER / T. JACKSON (847) 705-4171

CONTRACT 60A31

STATE OF ILLINOIS
DEPARTMENT OF TRANSPORTATION
DIVISION OF HIGHWAYS

SUBMITTED: 12/21 2005
Diane M. O'Keefe
DISTRICT ENGINEER

February 3, 2006
Mike Hine (P)
ENGINEER OF DESIGN AND ENVIRONMENT

February 3, 2006
Milton S. Sees (P.E.)
DIRECTOR, DIVISION OF HIGHWAYS

**PRINTED BY THE AUTHORITY
OF THE STATE OF ILLINOIS**

J.U.L.I.E.: JOINT UTILITY LOCATION
INFORMATION FOR EXCAVATION
(800) 892-0123

INDEX OF SHEETS

- 1 COVER SHEET
- 2 INDEX OF SHEETS
GENERAL NOTES
SUMMARY OF QUANTITIES
STATE STANDARDS
- 3 TC- 17

ROUTE	SECTION	COUNTY	TOTAL SHEETS	SHEET NUMBER
VARIOUS	2005-0531	VARIOUS	3	2

CONTRACT 60A31

SUMMARY OF QUANTITIES

CODE NUMBER	DESCRIPTION	UNIT	TOTAL	URBAN FORMAL CONTRACTS MAIN
X0322320	WEED CONTROL, THISTLE	POUND	120	120
X0322324	WEED CONTROL, TEASEL	POUND	30	30
X0322856	WEED CONTROL, NON-SELECTIVE AND NON-RESIDUAL	GALLON	40	40
X0322955	WEED CONTROL SELECTIVE (WOODY PLANTS AND BROADLEAF)	GALLON	40	40
X0324854	WEED CONTROL, NATIVE GRASS RESTORATION	GALLON	10	10
X0323327	WEED CONTROL, PRE-EMERGENT (SAHARA DG)	POUND	400	400
67100100	MOBILIZATION	L SUM	1	1

GENERAL NOTES

ALL SPRAY LOCATIONS WILL BE DIRECTED BY THE ENGINEER.

SAHARA DG AND ROUNDUP ARE TO BE TANK MIXED TOGETHER AND SPRAYED ONLY ON PAVED AREAS.

ESCORT AND OVERDRIVE ARE TO BE TANK MIXED TOGETHER AND SPRAYED ON TEASEL AND THISTLE INFESTED AREAS.

PLATEAU SHALL BE SUPPLIED BY THE ENGINEER.

FOR EXPRESSWAYS THE CONTRACTOR SHALL CONTACT THE BUREAU OF TRAFFIC FOR TRAFFIC CLEARANCE NO LATER THAN 11:00 A.M THE DAY BEFORE WORK BEGINS.

STATE STANDARDS

701311-02

701426-02

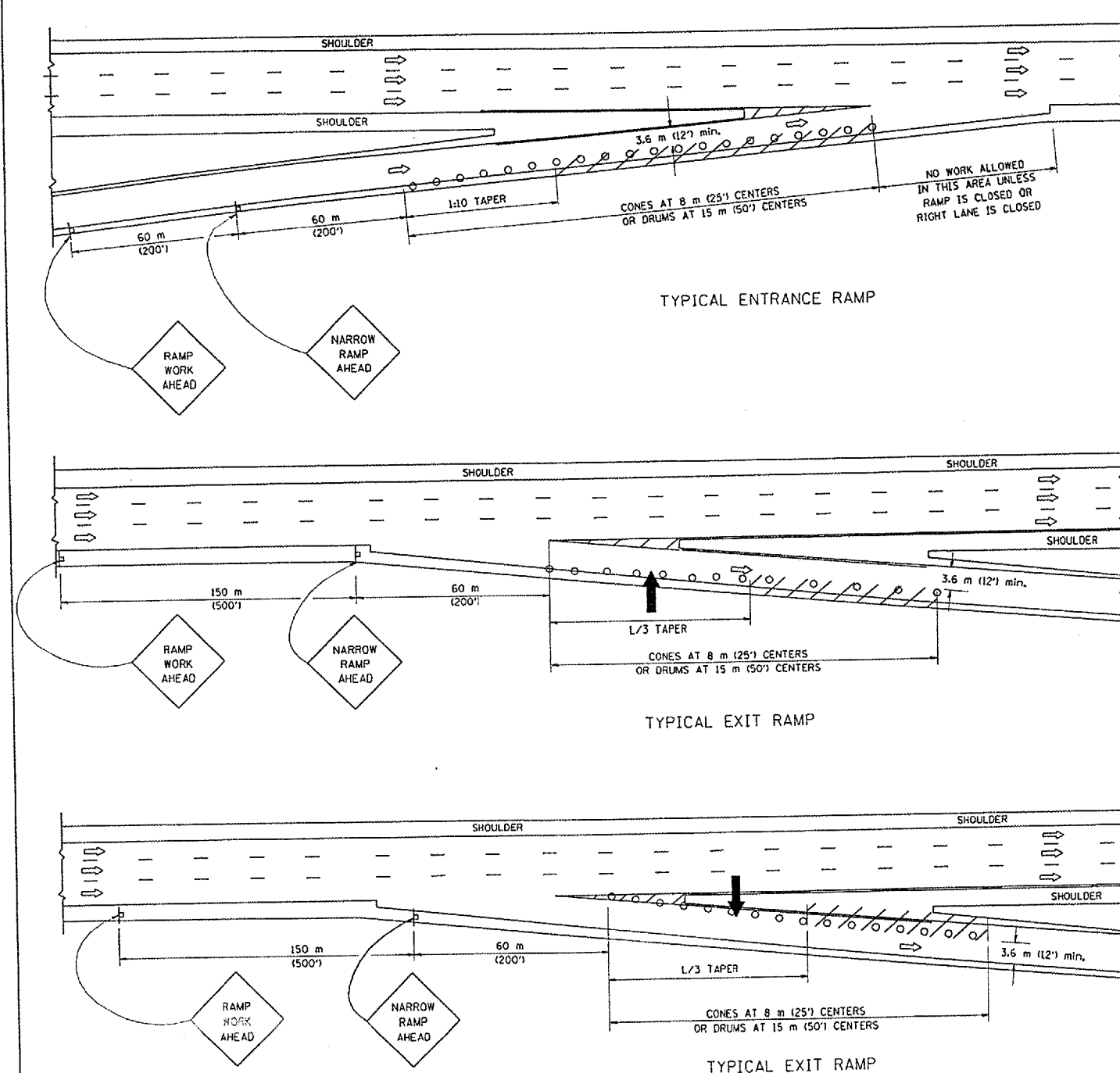
702001-05

ILLINOIS DEPARTMENT OF TRANSPORTATION

WEED CONTROL
SELECTIVE AND NON-SELECTIVE

Rev.

PARTIAL RAMP CLOSURE DETAILS



SYMBOLS

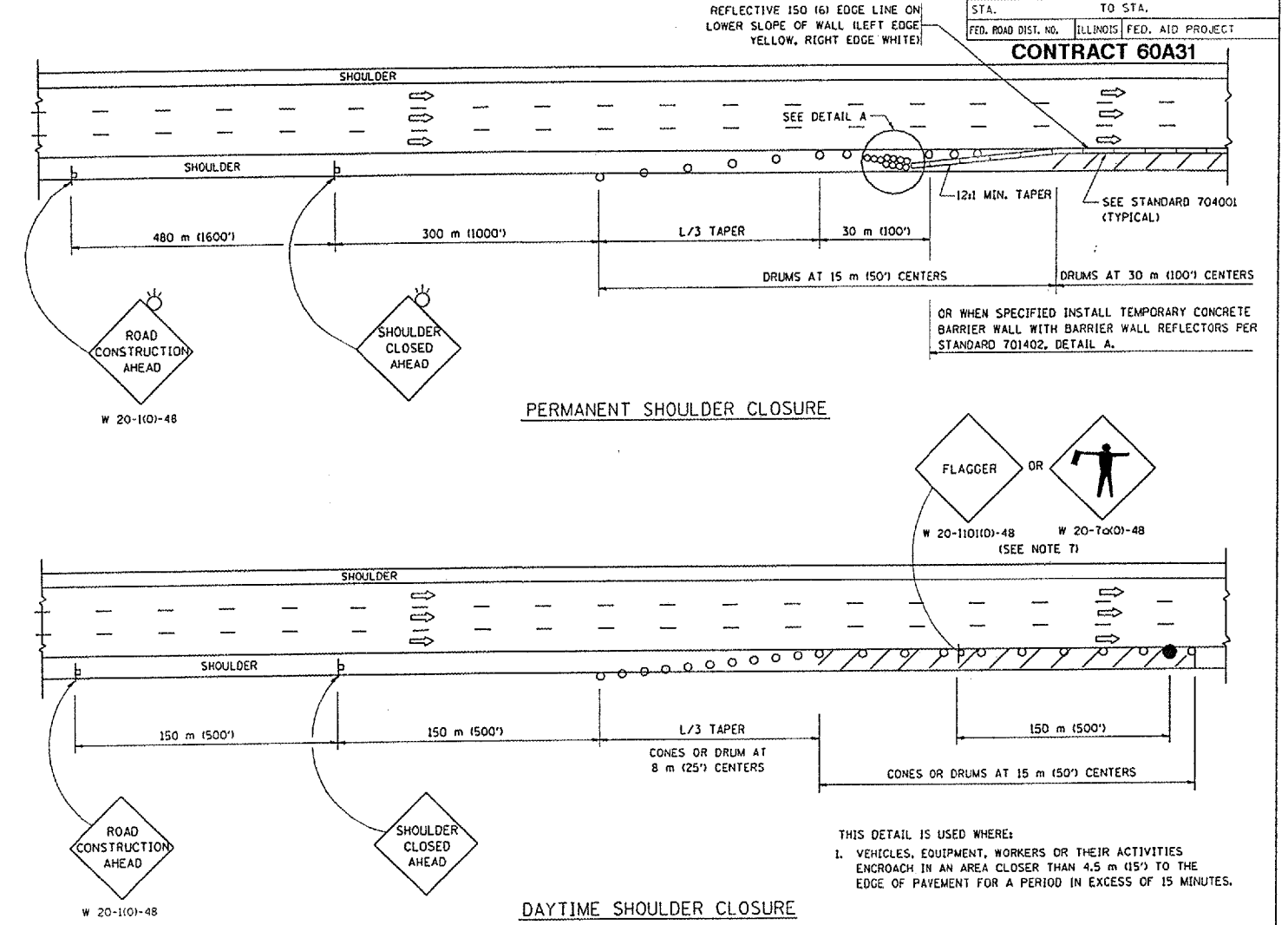
- ARROWBOARD
- WORK AREA
- SIGN ON PORTABLE OR PERMANENT SUPPORT
- FLAGGER WITH CONTROL SIGN
- DRUM WITH MONO-DIRECTIONAL STEADY BURNING LIGHT
- CONES - 700 (28) IN HEIGHT

GENERAL NOTES

1. THE "L" DISTANCE EQUALS:

SPEED LIMIT	FORMULAS
80 km/h (45 mph) OR GREATER:	METRIC ENGLISH $L=0.65(W/S)$ $L=(W/S)$
W = WIDTH OF OFFSET IN METERS (FEET)	
S = NORMAL POSTED SPEED KM/H (MPH)	
2. PLASTIC DRUMS WITH HIGH PERFORMANCE REFLECTIVE SHEETING AND STEADY BURNING LIGHTS ARE REQUIRED FOR ALL NIGHTTIME CLOSURES.
3. ALL SIGNS SHALL BE POST MOUNTED IF THE CLOSURE TIME EXCEEDS FOUR DAYS.
4. FLASHING LIGHTS SHALL BE USED DURING THE HOURS OF DARKNESS AND SHALL BE INSTALLED ABOVE THE FIRST TWO SETS OF SIGNS.

SHOULDER CLOSURE DETAILS



F.A. RTE.	SECTION	COUNTY	TOTAL SHEETS	SHEET NO.
	2005-0531	VARIOUS	3	3
STA.	TO STA.			
FED. ROAD DIST. NO.	ILLINOIS	FED. AID PROJECT		

CONTRACT 60A31

OR WHEN SPECIFIED INSTALL TEMPORARY CONCRETE BARRIER WALL WITH BARRIER WALL REFLECTORS PER STANDARD 701402, DETAIL A.

THIS DETAIL IS USED WHERE:
 1. VEHICLES, EQUIPMENT, WORKERS OR THEIR ACTIVITIES ENCR OACH IN AN AREA CLOSER THAN 4.5 m (15') TO THE EDGE OF PAVEMENT FOR A PERIOD IN EXCESS OF 15 MINUTES.

ARRAY DESIGN PER MANUFACTURER TO BE NCHRP 350 COMPLIANT FOR POSTED SPEED.

DETAIL "A"
 IMPACT ATTENUATOR, TEMPORARY
 (SEE NOTE 5)

5. THE IMPACT ATTENUATOR, TEMPORARY IS NOT REQUIRED WHEN THE TEMPORARY CONCRETE BARRIER WALL IS OUTSIDE THE CLEAR ZONE OR IS TIED INTO THE EXISTING GUARDRAIL. IF OFFSET IS LESS THAN 5 FEET USE "TRAFFIC BARRIER TERMINAL, TYPE III, TEMPORARY" DEVICE TO MEET NCHRP350 FOR POSTED SPEED.
6. AUTHORIZATION FROM THE DISTRICT'S BUREAU OF TRAFFIC IS REQUIRED FOR ALL FREEWAY CLOSURES.
7. THE FLAGGER AND FLAGGER SIGN ARE REQUIRED AT THE ABOVE WORK SITES WHEN:
 - a. FOUR OR MORE WORK VEHICLES ENTER THE TRAFFIC LANES IN A ONE HOUR PERIOD.
 - b. THE WORK ACTIVITY REQUIRES FREQUENT ENCR OACHMENT INTO THE LANE OPEN TO TRAFFIC.
 THE FLAGGER SHALL BE STATIONED APPROXIMATELY 30 m (100') TO 60 m (200') IN ADVANCE OF THE WORKERS.

REVISIONS	
NAME	DATE
DWS	11/96
JAF	12/02
NCHRP 350	04/03

ALL DIMENSIONS ARE IN MILLIMETERS (INCHES) UNLESS OTHERWISE SHOWN.
 ILLINOIS DEPARTMENT OF TRANSPORTATION

TRAFFIC CONTROL DETAILS FOR FREEWAY SHOULDER CLOSURES PARTIAL RAMP CLOSURES

SCALE: NONE
 DATE: 05/06/2003
 DRAWN BY: DWS
 DESIGNED BY: DWS
 CHECKED BY: TC-17