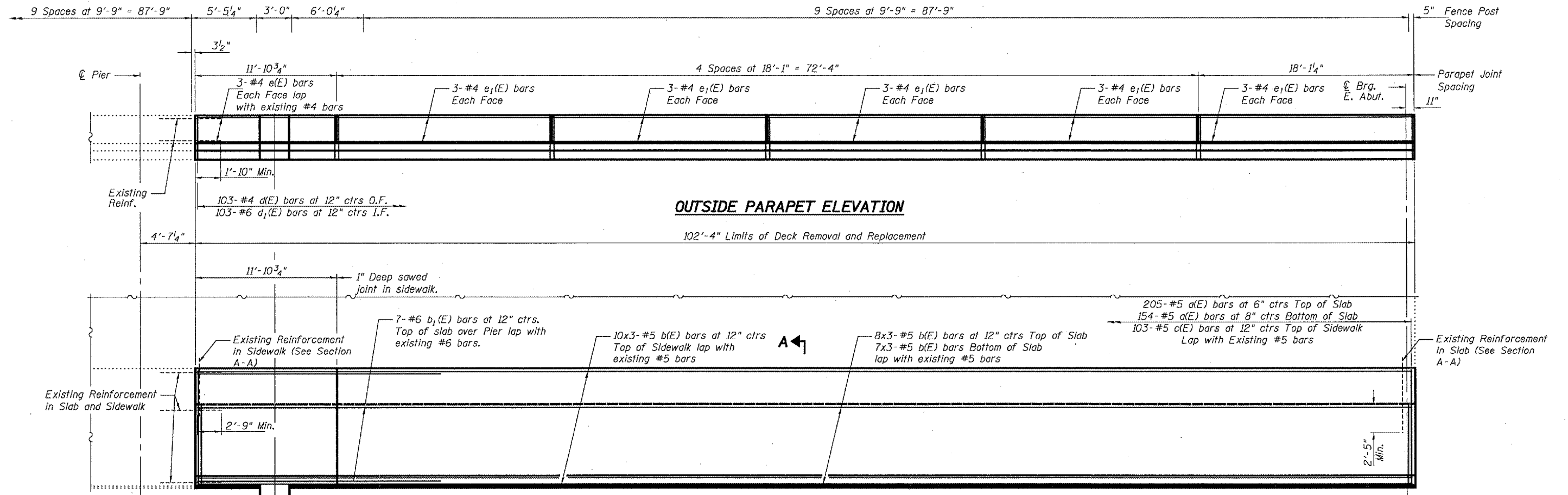


STATE OF ILLINOIS  
DEPARTMENT OF TRANSPORTATION

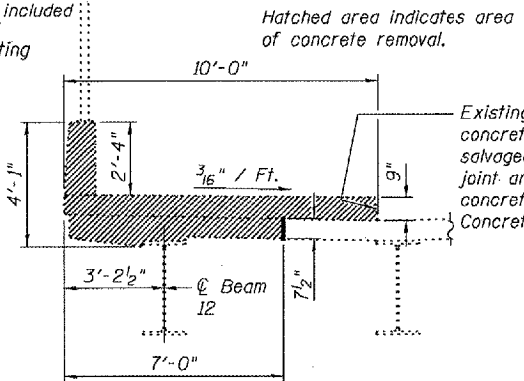
ROUTE NO. <b>FAP 347</b>	SECTION	COUNTY Cook	TOTAL SHEETS <b>17</b>	SHEET NO. <b>10</b>	SHEET NO. 3 5 SHEETS
FED. ROAD DIST. NO. 7		ILLINOIS	FED. AID PROJECT		

Contract Number: 62956



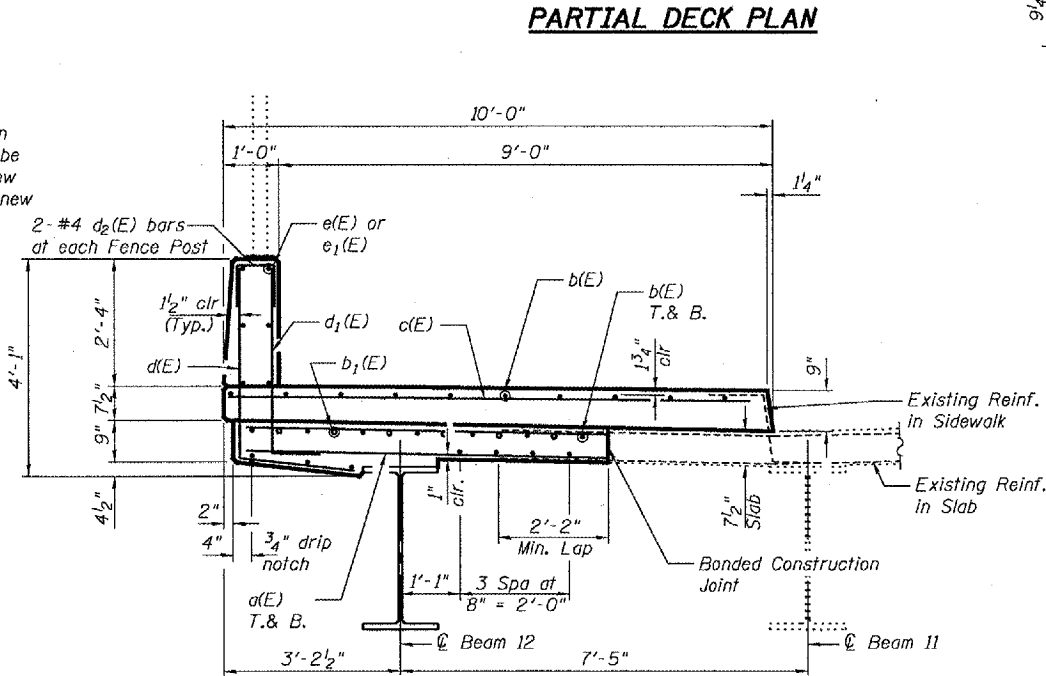
Existing reinforcement extending into the removal area shall be cleaned, straightened and incorporated into the new construction. Any reinforcement bars that are damaged during concrete removal shall be replaced with an approved bar splicer or anchorage system. Cost shall be included with Concrete Removal.

Existing fence to be removed, stored and re-erected. Cost included in Removing and Re-erecting Existing Railing.

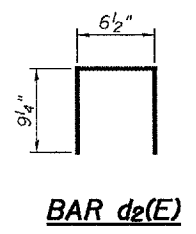


SECTION A-A  
SHOWING CONCRETE REMOVAL

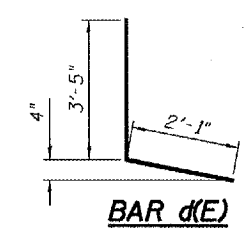
Existing 6" leg of PJS within concrete removal area shall be salvaged and glued to the new joint angle prior to pouring new concrete. Cost included with Concrete Removal.



SECTION A-A

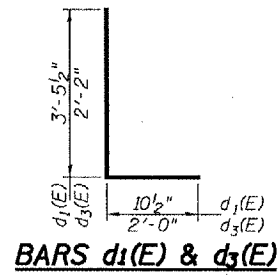


BAR d2(E)

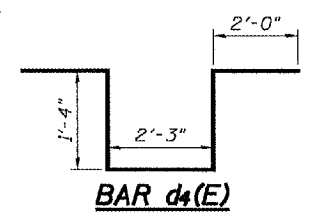


BAR d(E)

MIN BAR LAP  
#4 = 1'-8"  
#5 = 2'-2"  
#6 = 2'-7"



BARS d1(E) & d3(E)



BAR d4(E)

BILL OF MATERIAL

Bar	No.	Size	Length	Shape
a(E)	359	#5	6'-7"	—
b(E)	75	#5	35'-6"	—
b1(E)	7	#6	20'-5"	—
c(E)	103	#5	9'-6"	—
d(E)	103	#4	5'-6"	L
d1(E)	103	#6	4'-4"	L
d2(E)	24	#4	2'-1"	U
d3(E)	3	#6	4'-2"	L
d4(E)	5	#6	8'-11"	U
e(E)	6	#4	11'-7"	—
e1(E)	30	#4	17'-9"	—
Concrete Removal		Cu. Yd.	53	
Concrete Superstructure		Cu. Yd.	53	
Reinforcing Bars, Epoxy Coated		Lbs.	8,050	

Reinforcement bars designated (E) shall be epoxy coated.  
Bars indicated thus 1 x 2-#5 etc. indicates 1 line of bars with 2 lengths per line.

SIDEWALK AND SLAB DETAILS  
F.A.I. RT. 90/94  
COOK COUNTY  
SN 016-0478

DESIGNED	A.T.H.
CHECKED	S.J.B.
DRAWN	Drew Christopher
CHECKED	A.T.H. S.J.B.

January 18, 2006  
EXAMINED *John A. Morris*  
ENGINEER OF STRUCTURAL SERVICES  
PASSED *Ralph E. Anderson*  
ENGINEER OF BRIDGES AND STRUCTURES