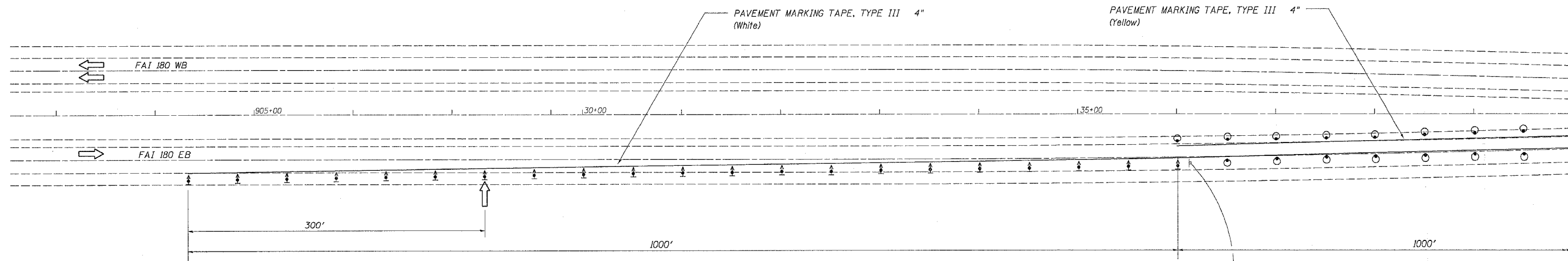


F.A.I. RTE.	SECTION	COUNTY	TOTAL SHEETS	SHEET NO.
180	106-3.28-118M-1		15	3
STA.	TO STA.			
FED. ROAD DIST. NO.		ILLINOIS	FED. AID PROJECT	
Putnam Counties				

# Traffic Control Plan

## Stage I

Refer to Traffic Control & Protection Standard 701431-03 for additional details and signing requirements

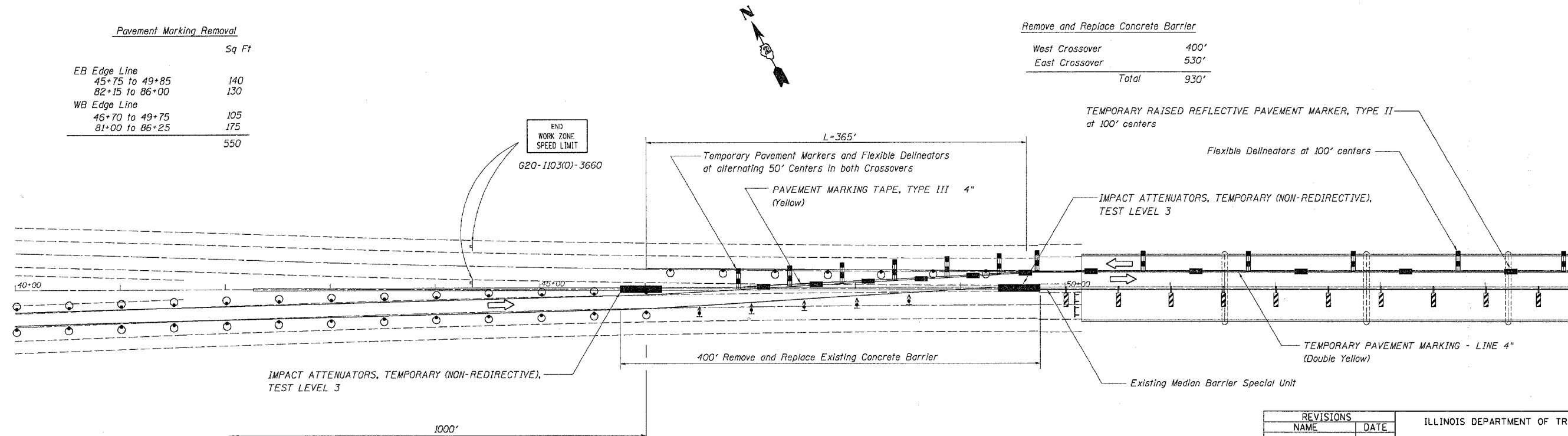


### Pavement Marking Removal

	Sq Ft
EB Edge Line	
45+75 to 49+85	140
82+15 to 86+00	130
WB Edge Line	
46+70 to 49+75	105
81+00 to 86+25	175
<b>Total</b>	<b>550</b>

### Remove and Replace Concrete Barrier

West Crossover	400'
East Crossover	530'
<b>Total</b>	<b>930'</b>



REVISIONS	
NAME	DATE

ILLINOIS DEPARTMENT OF TRANSPORTATION

SCALE: VERT.  
HORIZ.  
DATE

DRAWN BY  
CHECKED BY

PLOT DATE = Mon, Dec 18, 13:23:31, 2006  
FILE NAME = D:\BVT\plan\078000\078000A\078000.dgn  
PLOT SCALE = 50:0000 / IN.  
REFERENCE = REF#