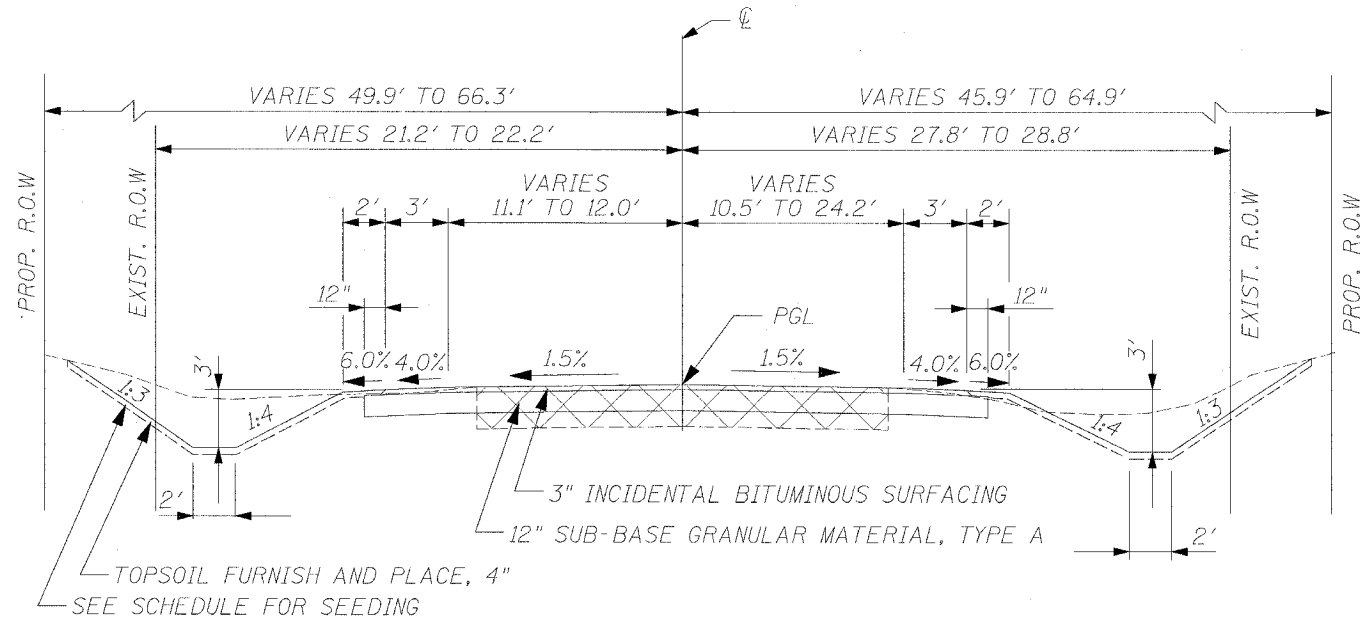


F.A.P. RTE.	SECTION	COUNTY	TOTAL SHEETS	SHEET NO.
309	16R-2	WHITESIDE	547	19
STA.		TO STA.		
FED. ROAD DIST. NO. 2 ILLINOIS FED. AID PROJECT				



NOTES:

- PROTECTIVE COAT SHALL BE PROVIDED ON COMB. CONC. CURB & GUTTER AND P.C.C. PAVEMENT IF CONSTRUCTED AFTER OCT. 15TH AND TRAFFIC IS ANTICIPATED PRIOR TO THE FOLLOWING APRIL 15TH.

BISHOP RD. TYPICAL SECTION
STA. 210+94.15 TO STA. 212+31.00

REVISIONS	
NAME	DATE

ILLINOIS DEPARTMENT OF TRANSPORTATION
TYPICAL SECTION (SHEET 7 OF 7)
FAP ROUTE 309 (US 30)
SECTION 16R-2
EAST CONTRACT
FROM 0.2 MILE EAST OF JACKSON ST.
TO FRENCH CREEK, WHITESIDE COUNTY

SCALE: N.T.S.
DATE 08/11/05

DRAWN BY CAM
CHECKED BY RDY