

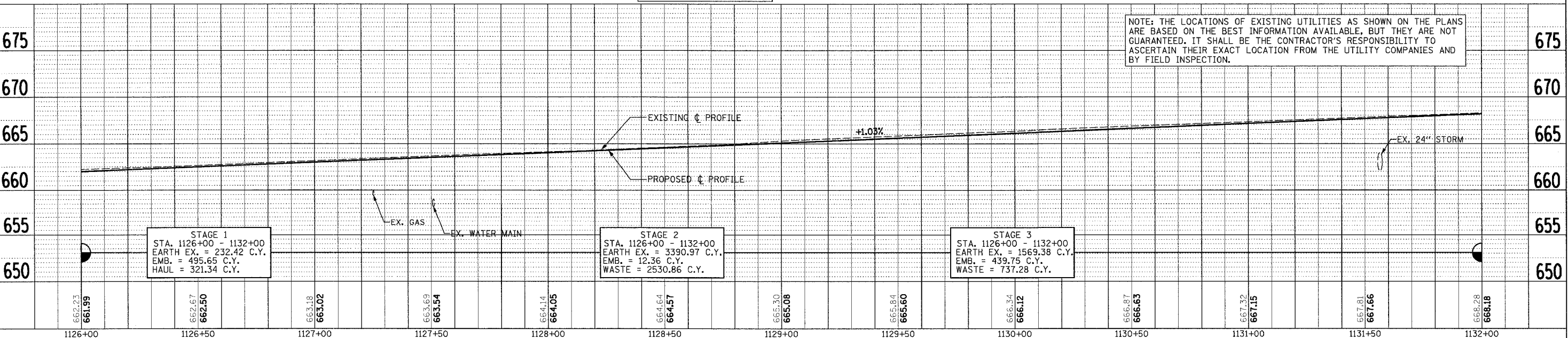
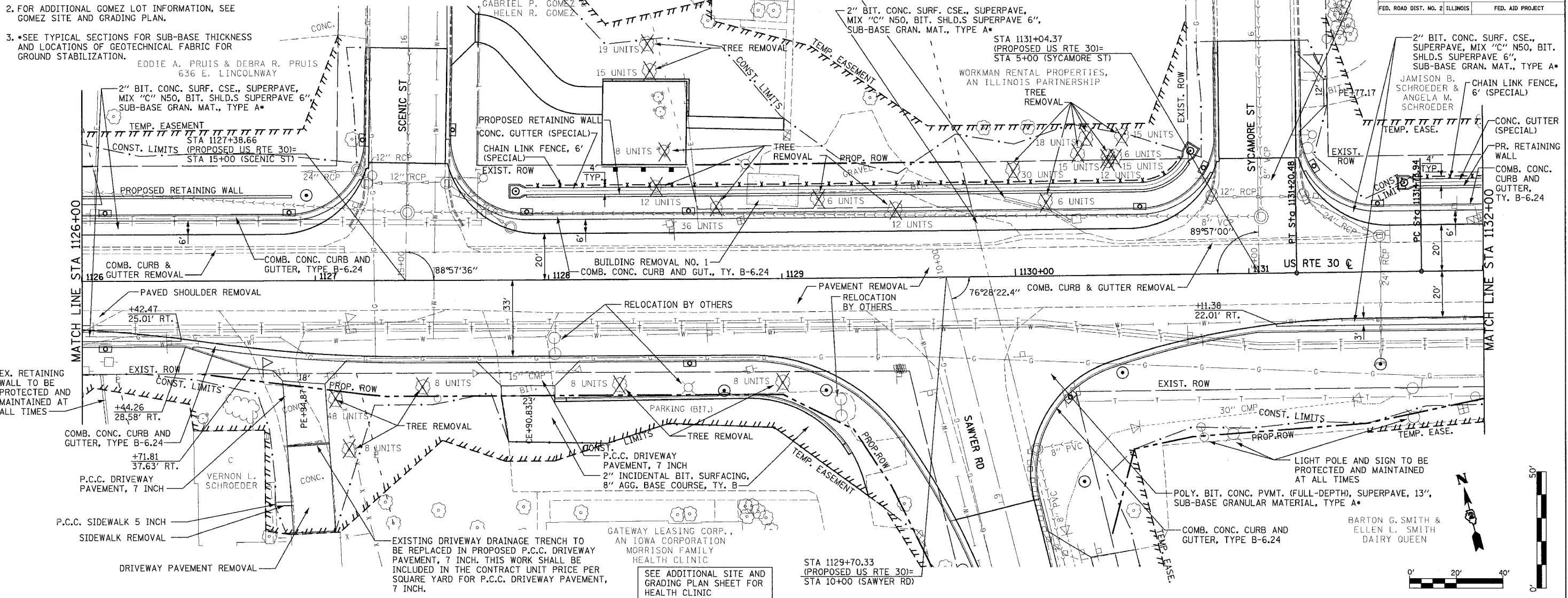
FAP R/L	SECTION	COUNTY	TOTAL SHEETS	SHEET NO.
309	16R-2	WHITESIDE	547	38
STA. 1126+00		TO STA. 1132+00		
FED. ROAD DIST. NO. 2 ILLINOIS		FED. AID PROJECT		

- NOTES:**
- SEE SCENIC ST., SAWYER RD. AND SYCAMORE ST. PLAN AND PROFILE SHEETS FOR ADDITIONAL INFORMATION.
 - FOR ADDITIONAL GOMEZ LOT INFORMATION, SEE GOMEZ SITE AND GRADING PLAN.
 - SEE TYPICAL SECTIONS FOR SUB-BASE THICKNESS AND LOCATIONS OF GEOTECHNICAL FABRIC FOR GROUND STABILIZATION.

AN EXISTING SEPTIC FIELD IS LOCATED WITHIN THE TEMPORARY EASEMENT ON THE GABRIEL P. GOMEZ LOT. IT IS NOT ANTICIPATED THAT THE PROPOSED IMPROVEMENTS WILL AFFECT THE SEPTIC FIELD. THE ENGINEER SHALL BE NOTIFIED IF CONSTRUCTION OPERATIONS INDICATE THAT THE EXISTING SEPTIC FIELD WILL BE DISTURBED.

REMOVE EXISTING RETAINING WALL. COST OF THIS WORK SHALL BE INCLUDED IN THE CONTRACT UNIT PRICE PER CUBIC YARD FOR EARTH EXCAVATION.

2" BIT. CONC. SURF. CSE., SUPERPAVE, MIX "C" N50, BIT. SHLD.S SUPERPAVE 6", SUB-BASE GRAN. MAT., TYPE A*



STAGE 1
 STA. 1126+00 - 1132+00
 EARTH EX. = 232.42 C.Y.
 EMB. = 495.65 C.Y.
 HAUL = 321.34 C.Y.

STAGE 2
 STA. 1126+00 - 1132+00
 EARTH EX. = 3390.97 C.Y.
 EMB. = 12.36 C.Y.
 WASTE = 2530.86 C.Y.

STAGE 3
 STA. 1126+00 - 1132+00
 EARTH EX. = 1569.38 C.Y.
 EMB. = 439.75 C.Y.
 WASTE = 737.28 C.Y.

NOTE: THE LOCATIONS OF EXISTING UTILITIES AS SHOWN ON THE PLANS ARE BASED ON THE BEST INFORMATION AVAILABLE, BUT THEY ARE NOT GUARANTEED. IT SHALL BE THE CONTRACTOR'S RESPONSIBILITY TO ASCERTAIN THEIR EXACT LOCATION FROM THE UTILITY COMPANIES AND BY FIELD INSPECTION.

PLAN AND PROFILE (US RTE 30)

DATE	BY	REVISION

DATE	BY	REVISION

DATE-TIME-SPEC
 11/27/2005 7:00 AM