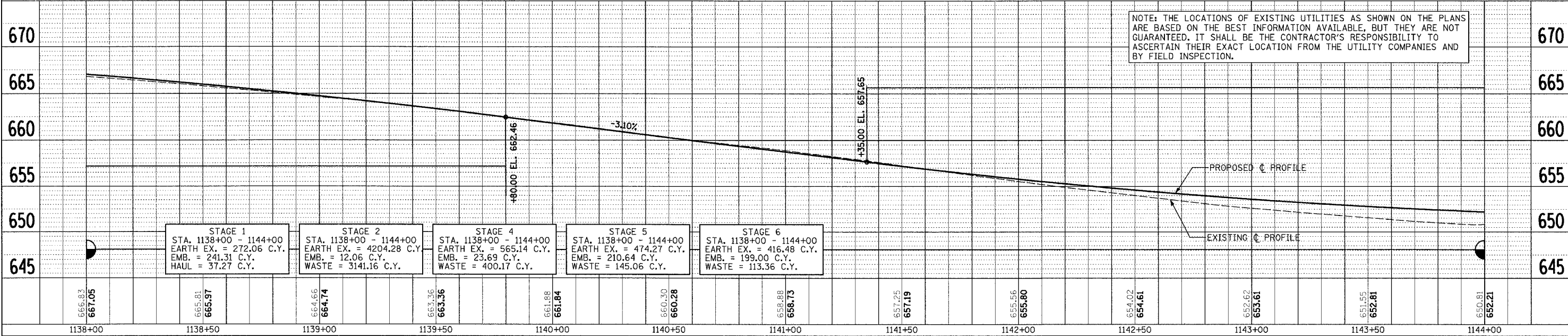
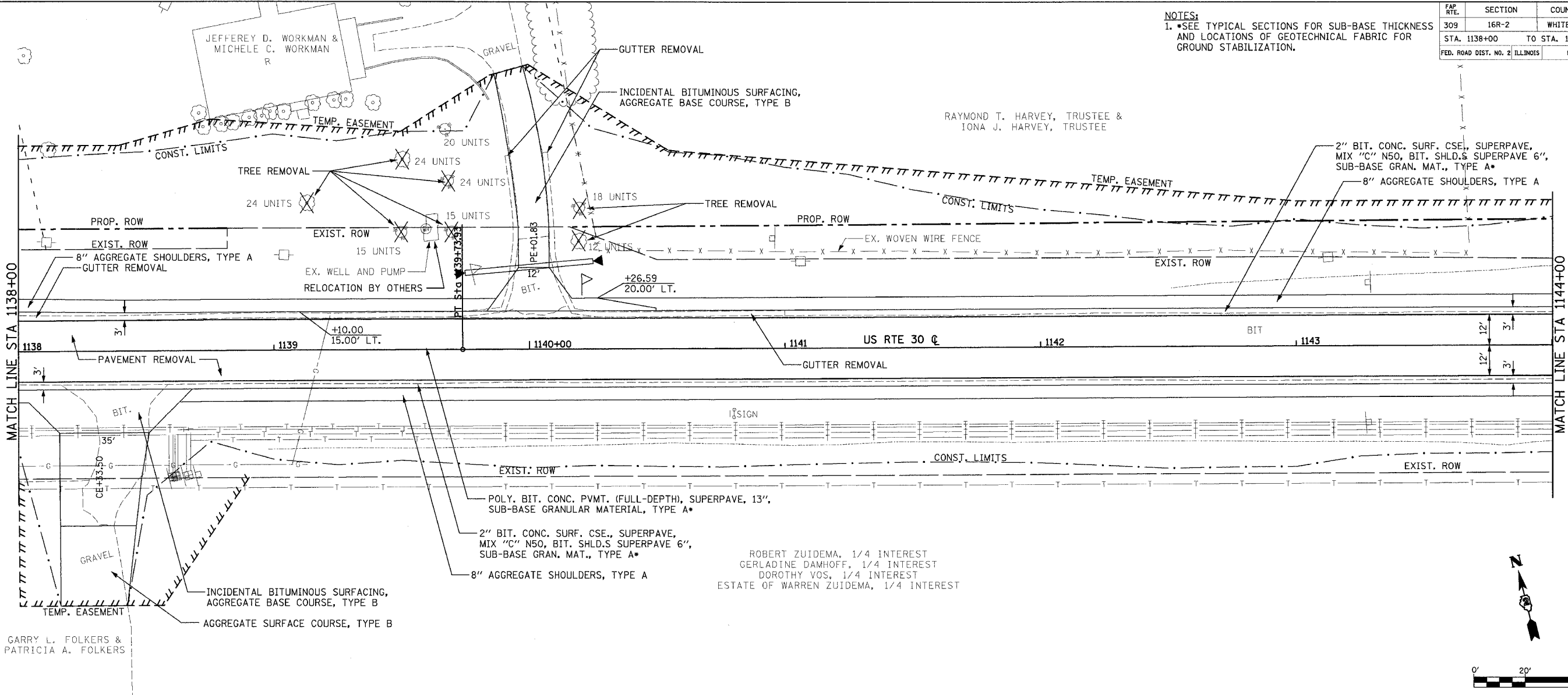


FAP RTE.	SECTION	COUNTY	TOTAL SHEETS	SHEET NO.
309	16R-2	WHITESIDE	547	40
STA. 1138+00 TO STA. 1144+00				
FED. ROAD DIST. NO. 2 ILLINOIS			FED. AID PROJECT	

NOTES:
 1. *SEE TYPICAL SECTIONS FOR SUB-BASE THICKNESS AND LOCATIONS OF GEOTECHNICAL FABRIC FOR GROUND STABILIZATION.



NOTE: THE LOCATIONS OF EXISTING UTILITIES AS SHOWN ON THE PLANS ARE BASED ON THE BEST INFORMATION AVAILABLE, BUT THEY ARE NOT GUARANTEED. IT SHALL BE THE CONTRACTOR'S RESPONSIBILITY TO ASCERTAIN THEIR EXACT LOCATION FROM THE UTILITY COMPANIES AND BY FIELD INSPECTION.

DATE	BY	REVISION
		DESIGNED
		PLANNED
		ALIGNED
		CHECKED
		NOTED
		FILED

DATE	BY	REVISION
		DESIGNED
		PLANNED
		ALIGNED
		CHECKED
		NOTED
		FILED

DATE TIME
 1138+00
 1138+50
 1139+00
 1139+50
 1140+00
 1140+50
 1141+00
 1141+50
 1142+00
 1142+50
 1143+00
 1143+50
 1144+00

PLAN AND PROFILE (US RTE 30)