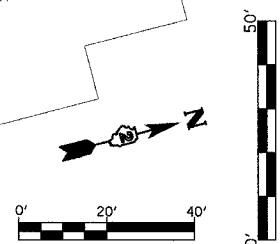
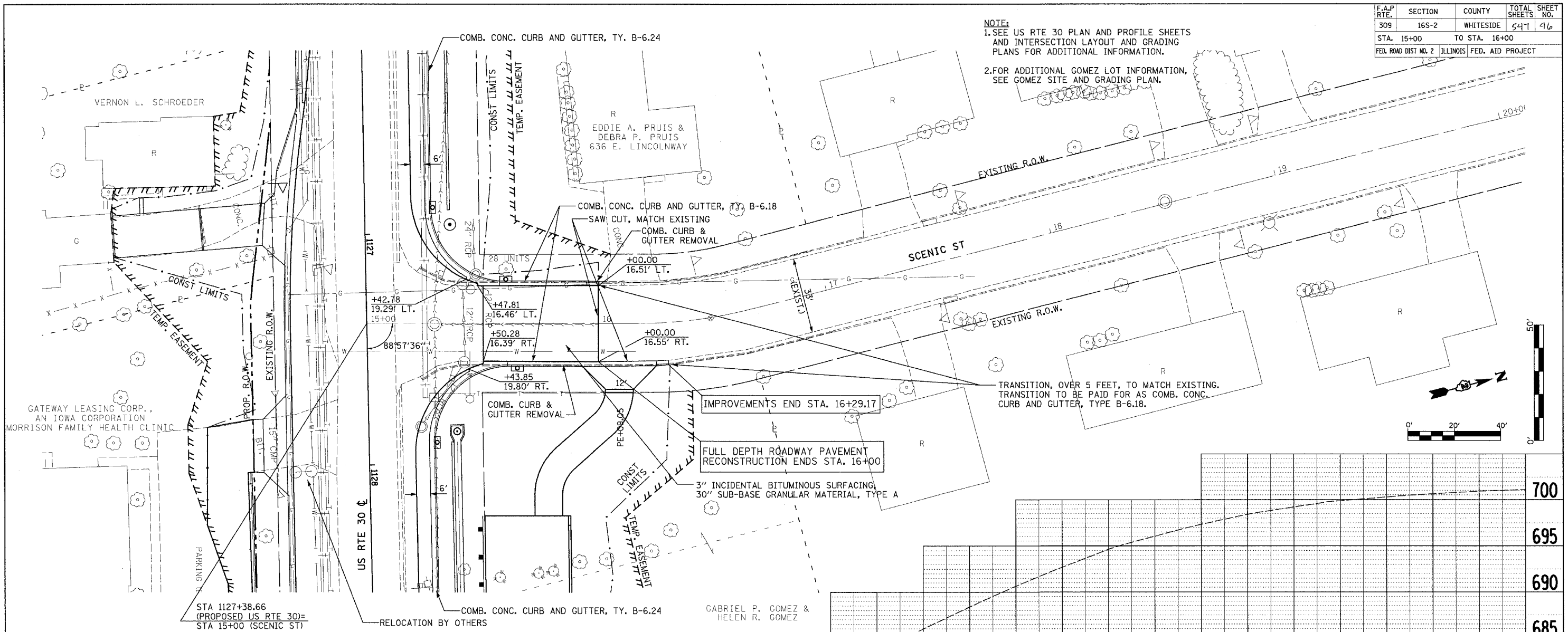


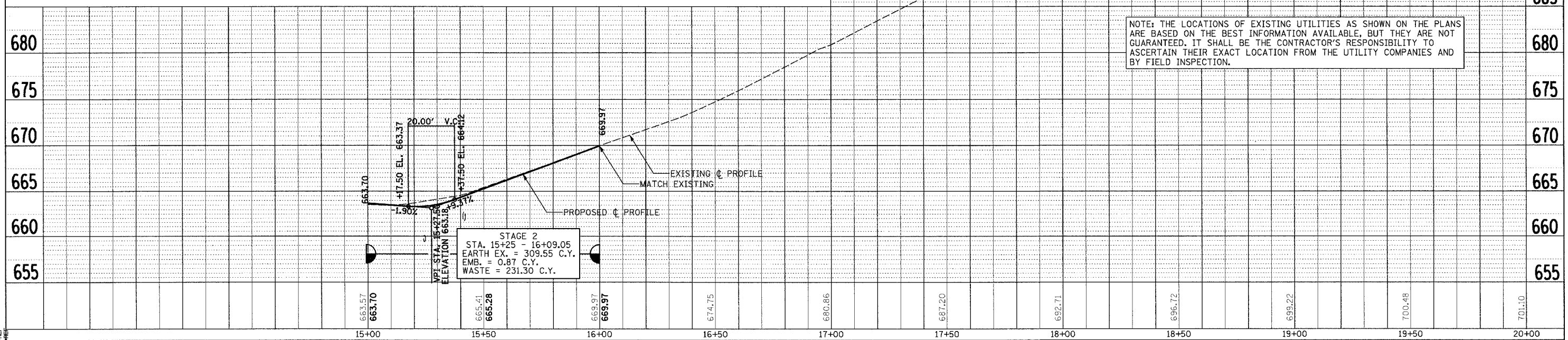
F.A.P. RTE.	SECTION	COUNTY	TOTAL SHEETS	SHEET NO.
309	165-2	WHITESIDE	547	416
STA. 15+00		TO STA. 16+00		
FED. ROAD DIST NO. 2 ILLINOIS FED. AID PROJECT				

NOTE:
 1. SEE US RTE 30 PLAN AND PROFILE SHEETS AND INTERSECTION LAYOUT AND GRADING PLANS FOR ADDITIONAL INFORMATION.
 2. FOR ADDITIONAL GOMEZ LOT INFORMATION, SEE GOMEZ SITE AND GRADING PLAN.



STA 1127+38.66
 (PROPOSED US RTE 30)=
 STA 15+00 (SCENIC ST)

GABRIEL P. GOMEZ &
 HELEN R. GOMEZ



NOTE: THE LOCATIONS OF EXISTING UTILITIES AS SHOWN ON THE PLANS ARE BASED ON THE BEST INFORMATION AVAILABLE, BUT THEY ARE NOT GUARANTEED. IT SHALL BE THE CONTRACTOR'S RESPONSIBILITY TO ASCERTAIN THEIR EXACT LOCATION FROM THE UTILITY COMPANIES AND BY FIELD INSPECTION.

DATE	BY	REVISION

DATE	BY	REVISION

DATE TIME
 DRAWN BY
 CHECKED BY
 REF
 SHEET

PLAN AND PROFILE (SCENIC ST)