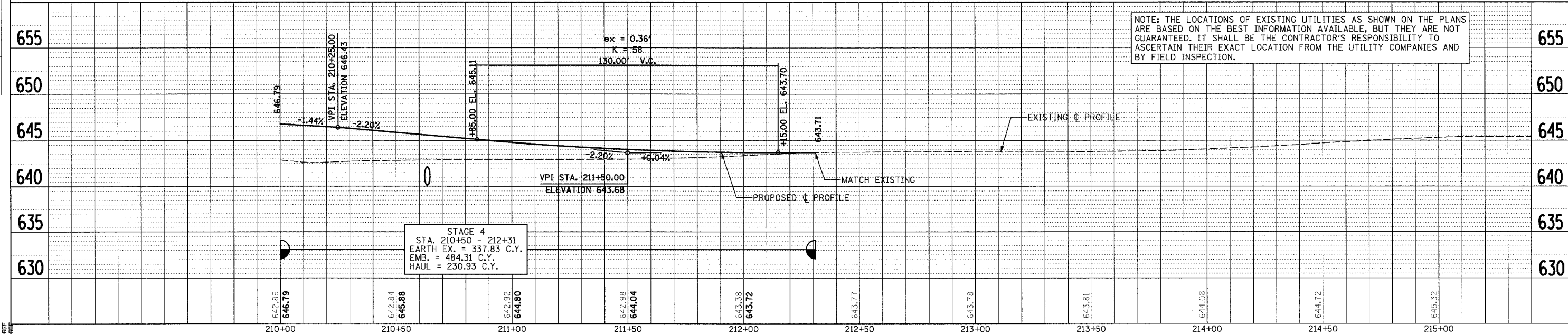
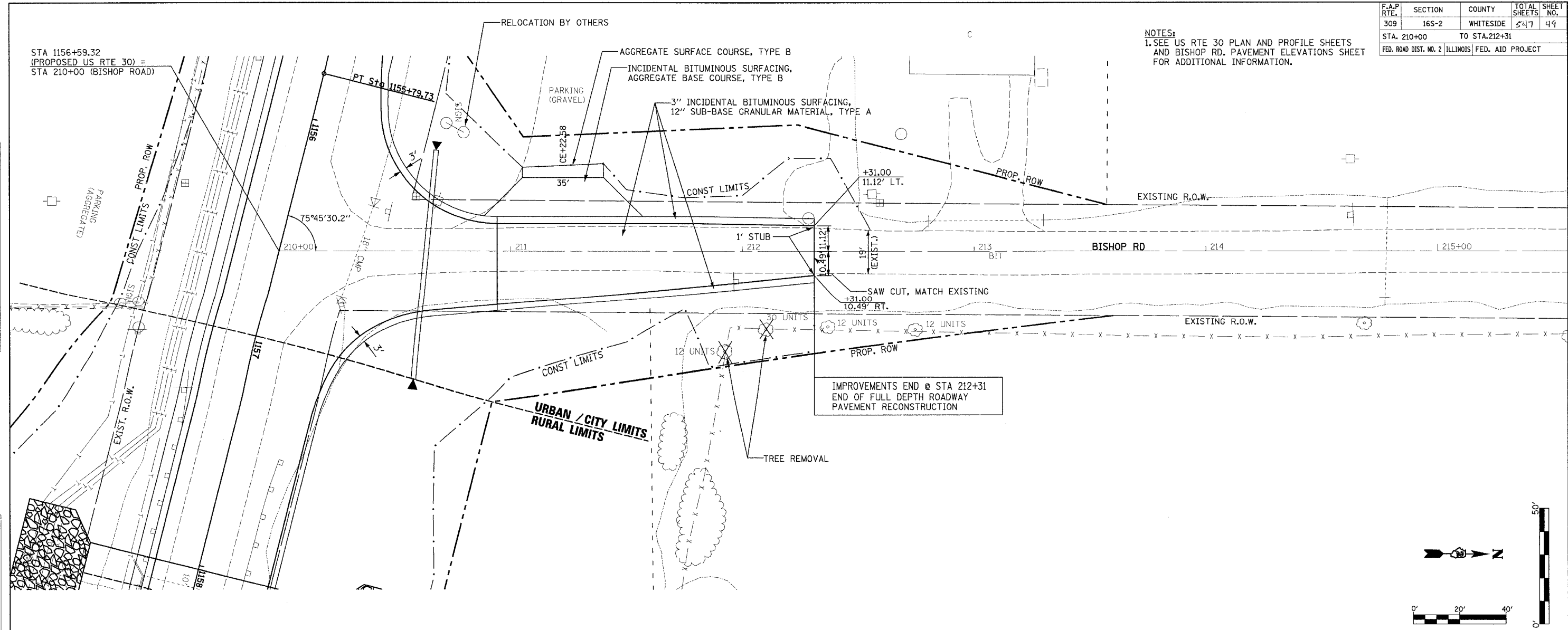
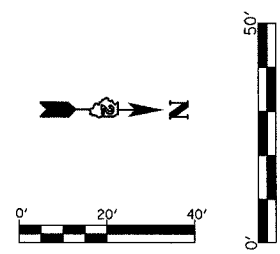


F.A.P. RTE.	SECTION	COUNTY	TOTAL SHEETS	SHEET NO.
309	165-2	WHITESIDE	547	49
STA. 210+00		TO STA. 212+31		
FED. ROAD DIST. NO. 2 ILLINOIS FED. AID PROJECT				

NOTES:
 1. SEE US RTE 30 PLAN AND PROFILE SHEETS AND BISHOP RD. PAVEMENT ELEVATIONS SHEET FOR ADDITIONAL INFORMATION.



NOTE: THE LOCATIONS OF EXISTING UTILITIES AS SHOWN ON THE PLANS ARE BASED ON THE BEST INFORMATION AVAILABLE, BUT THEY ARE NOT GUARANTEED. IT SHALL BE THE CONTRACTOR'S RESPONSIBILITY TO ASCERTAIN THEIR EXACT LOCATION FROM THE UTILITY COMPANIES AND BY FIELD INSPECTION.



DATE	BY	REVISION
		1. CHECKED
		2. APPROVED

DATE	BY	REVISION
		1. CHECKED
		2. APPROVED

DATE TIME
 DRAWN BY
 CHECKED BY
 REF
 REF

PLAN AND PROFILE (BISHOP RD)