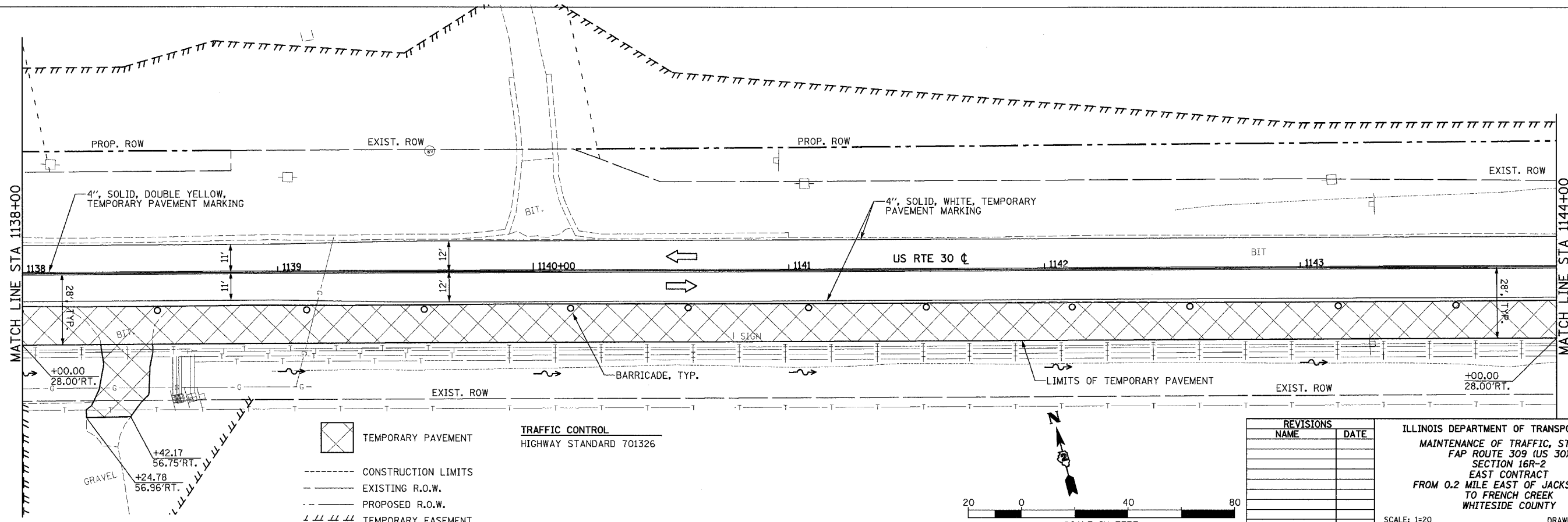
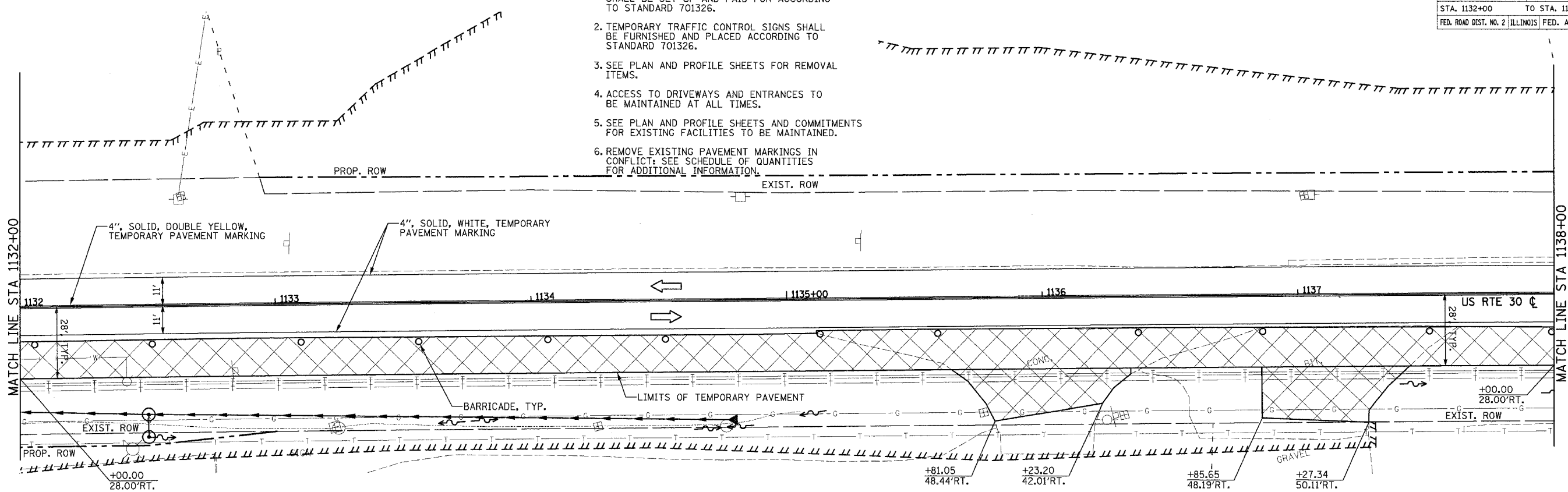
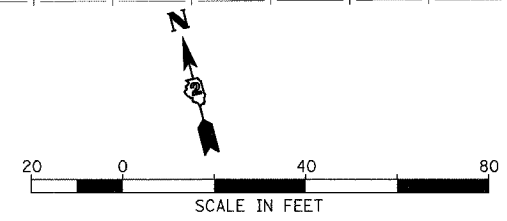


F.A.P. RTE.	SECTION	COUNTY	TOTAL SHEETS	SHEET NO.
309	16R-2	WHITESIDE	647	56
STA. 1132+00 TO STA. 1144+00				
FED. ROAD DIST. NO. 2 ILLINOIS FED. AID PROJECT				

- NOTES:
1. THIS TRAFFIC CONTROL AND PROTECTION SHALL BE SET UP AND PAID FOR ACCORDING TO STANDARD 701326.
  2. TEMPORARY TRAFFIC CONTROL SIGNS SHALL BE FURNISHED AND PLACED ACCORDING TO STANDARD 701326.
  3. SEE PLAN AND PROFILE SHEETS FOR REMOVAL ITEMS.
  4. ACCESS TO DRIVEWAYS AND ENTRANCES TO BE MAINTAINED AT ALL TIMES.
  5. SEE PLAN AND PROFILE SHEETS AND COMMITMENTS FOR EXISTING FACILITIES TO BE MAINTAINED.
  6. REMOVE EXISTING PAVEMENT MARKINGS IN CONFLICT: SEE SCHEDULE OF QUANTITIES FOR ADDITIONAL INFORMATION.



- TEMPORARY PAVEMENT
  - CONSTRUCTION LIMITS
  - EXISTING R.O.W.
  - PROPOSED R.O.W.
  - TEMPORARY EASEMENT
- TRAFFIC CONTROL**  
HIGHWAY STANDARD 701326



REVISIONS	
NAME	DATE

ILLINOIS DEPARTMENT OF TRANSPORTATION  
 MAINTENANCE OF TRAFFIC, STAGE 1  
 FAP ROUTE 309 (US 30)  
 SECTION 16R-2  
 EAST CONTRACT  
 FROM 0.2 MILE EAST OF JACKSON ST.  
 TO FRENCH CREEK  
 WHITESIDE COUNTY

SCALE: 1=20  
 DATE 08/19/04

DRAWN BY CAM  
 CHECKED BY RDY