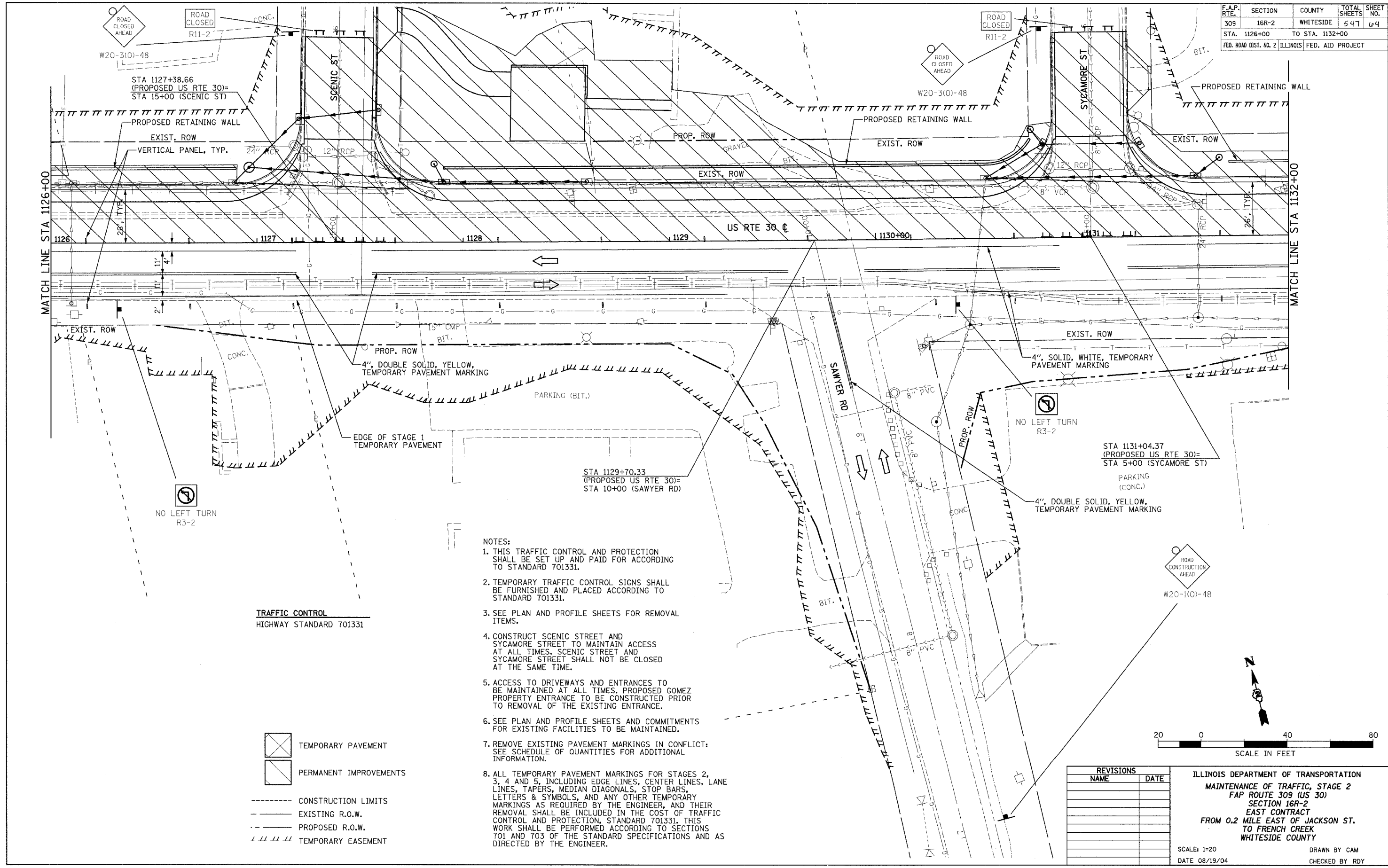


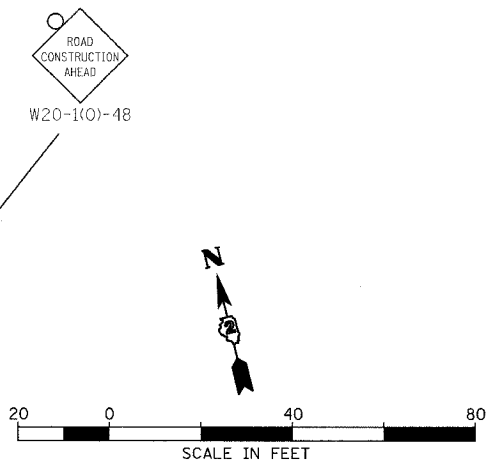
F.A.P. RTE.	SECTION	COUNTY	TOTAL SHEETS	SHEET NO.
309	16R-2	WHITESIDE	547	64
STA. 1126+00		TO STA. 1132+00		
FED. ROAD DIST. NO. 2		ILLINOIS		FED. AID PROJECT



- NOTES:**
1. THIS TRAFFIC CONTROL AND PROTECTION SHALL BE SET UP AND PAID FOR ACCORDING TO STANDARD 701331.
  2. TEMPORARY TRAFFIC CONTROL SIGNS SHALL BE FURNISHED AND PLACED ACCORDING TO STANDARD 701331.
  3. SEE PLAN AND PROFILE SHEETS FOR REMOVAL ITEMS.
  4. CONSTRUCT SCENIC STREET AND SYCAMORE STREET TO MAINTAIN ACCESS AT ALL TIMES. SCENIC STREET AND SYCAMORE STREET SHALL NOT BE CLOSED AT THE SAME TIME.
  5. ACCESS TO DRIVEWAYS AND ENTRANCES TO BE MAINTAINED AT ALL TIMES. PROPOSED GOMEZ PROPERTY ENTRANCE TO BE CONSTRUCTED PRIOR TO REMOVAL OF THE EXISTING ENTRANCE.
  6. SEE PLAN AND PROFILE SHEETS AND COMMITMENTS FOR EXISTING FACILITIES TO BE MAINTAINED.
  7. REMOVE EXISTING PAVEMENT MARKINGS IN CONFLICT; SEE SCHEDULE OF QUANTITIES FOR ADDITIONAL INFORMATION.
  8. ALL TEMPORARY PAVEMENT MARKINGS FOR STAGES 2, 3, 4 AND 5, INCLUDING EDGE LINES, CENTER LINES, LANE LINES, TAPERS, MEDIAN DIAGONALS, STOP BARS, LETTERS & SYMBOLS, AND ANY OTHER TEMPORARY MARKINGS AS REQUIRED BY THE ENGINEER, AND THEIR REMOVAL SHALL BE INCLUDED IN THE COST OF TRAFFIC CONTROL AND PROTECTION, STANDARD 701331. THIS WORK SHALL BE PERFORMED ACCORDING TO SECTIONS 701 AND 703 OF THE STANDARD SPECIFICATIONS AND AS DIRECTED BY THE ENGINEER.

**TRAFFIC CONTROL**  
HIGHWAY STANDARD 701331

- TEMPORARY PAVEMENT
- PERMANENT IMPROVEMENTS
- CONSTRUCTION LIMITS
- EXISTING R.O.W.
- PROPOSED R.O.W.
- TEMPORARY EASEMENT



REVISIONS	
NAME	DATE

ILLINOIS DEPARTMENT OF TRANSPORTATION  
 MAINTENANCE OF TRAFFIC, STAGE 2  
 FAP ROUTE 309 (US 30)  
 SECTION 16R-2  
 EAST CONTRACT  
 FROM 0.2 MILE EAST OF JACKSON ST.  
 TO FRENCH CREEK  
 WHITESIDE COUNTY

SCALE: 1=20  
 DATE 08/19/04  
 DRAWN BY CAM  
 CHECKED BY RDY