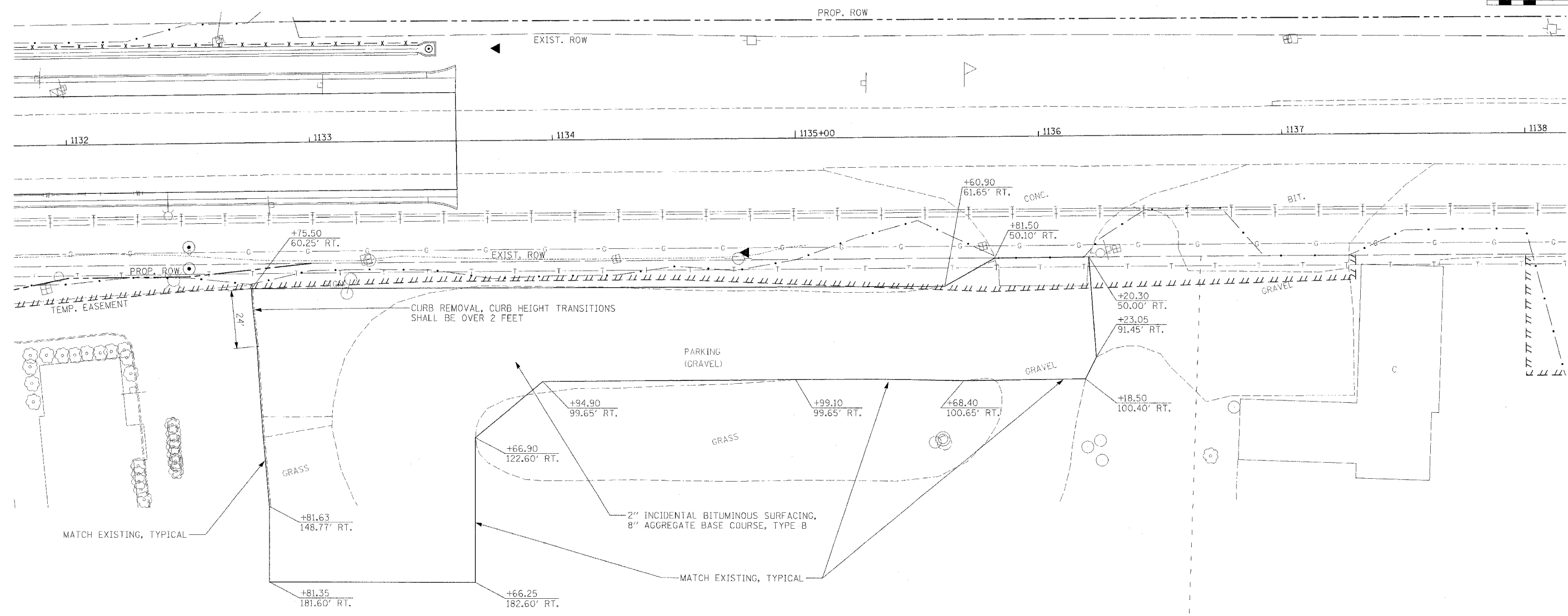
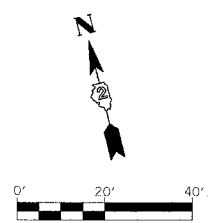


FAP RTE.	SECTION	COUNTY	TOTAL SHEETS	SHEET NO.
309	16R-2	WHITESIDE	647	74
STA. TO STA.		FED. ROAD DIST. NO. 2 ILLINOIS		
		FED. AID PROJECT		

- NOTES:**
1. DAIRY QUEEN ACCESS DRIVE TO BE CONSTRUCTED PRIOR TO CLOSURE OF SAWYER ROAD.
 2. SEE COMMITMENTS FOR ADDITIONAL INFORMATION.
 3. BITUMINOUS PAVEMENT AND ENTRANCE TO REMAIN IN PLACE WHEN THE PROJECT IS COMPLETE.



REVISIONS	
NAME	DATE

ILLINOIS DEPARTMENT OF TRANSPORTATION
 DAIRY QUEEN ACCESS DRIVE DETAIL, STAGE 3
 FAP ROUTE 309 (US 30)
 SECTION 16R-2
 EAST CONTRACT
 FROM 0.2 MILE EAST OF JACKSON ST.
 TO FRENCH CREEK
 WHITESIDE COUNTY

SCALE: 1=20
 DATE 08/26/05

DRAWN BY CAM
 CHECKED BY RDY