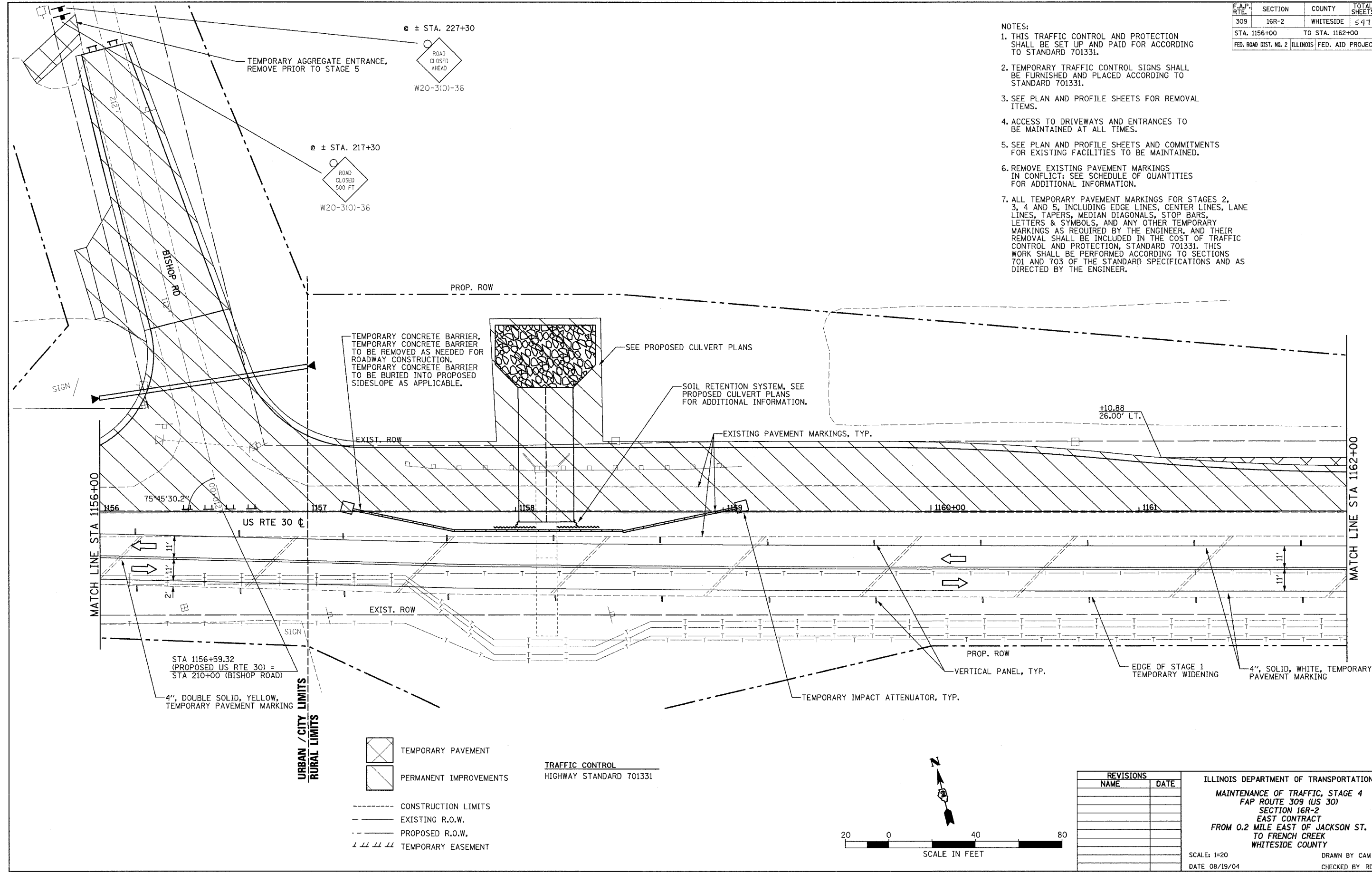


F.A.P. RTE.	SECTION	COUNTY	TOTAL SHEETS	SHEET NO.
309	16R-2	WHITESIDE	547	95
STA. 1156+00		TO STA. 1162+00		
FED. ROAD DIST. NO. 2 ILLINOIS FED. AID PROJECT				

- NOTES:
1. THIS TRAFFIC CONTROL AND PROTECTION SHALL BE SET UP AND PAID FOR ACCORDING TO STANDARD 701331.
 2. TEMPORARY TRAFFIC CONTROL SIGNS SHALL BE FURNISHED AND PLACED ACCORDING TO STANDARD 701331.
 3. SEE PLAN AND PROFILE SHEETS FOR REMOVAL ITEMS.
 4. ACCESS TO DRIVEWAYS AND ENTRANCES TO BE MAINTAINED AT ALL TIMES.
 5. SEE PLAN AND PROFILE SHEETS AND COMMITMENTS FOR EXISTING FACILITIES TO BE MAINTAINED.
 6. REMOVE EXISTING PAVEMENT MARKINGS IN CONFLICT: SEE SCHEDULE OF QUANTITIES FOR ADDITIONAL INFORMATION.
 7. ALL TEMPORARY PAVEMENT MARKINGS FOR STAGES 2, 3, 4 AND 5, INCLUDING EDGE LINES, CENTER LINES, LANE LINES, TAPERS, MEDIAN DIAGONALS, STOP BARS, LETTERS & SYMBOLS, AND ANY OTHER TEMPORARY MARKINGS AS REQUIRED BY THE ENGINEER, AND THEIR REMOVAL SHALL BE INCLUDED IN THE COST OF TRAFFIC CONTROL AND PROTECTION, STANDARD 701331. THIS WORK SHALL BE PERFORMED ACCORDING TO SECTIONS 701 AND 703 OF THE STANDARD SPECIFICATIONS AND AS DIRECTED BY THE ENGINEER.



TEMPORARY PAVEMENT
 PERMANENT IMPROVEMENTS
 CONSTRUCTION LIMITS
 EXISTING R.O.W.
 PROPOSED R.O.W.
 TEMPORARY EASEMENT

TRAFFIC CONTROL
 HIGHWAY STANDARD 701331

REVISIONS	
NAME	DATE

ILLINOIS DEPARTMENT OF TRANSPORTATION
 MAINTENANCE OF TRAFFIC, STAGE 4
 FAP ROUTE 309 (US 30)
 SECTION 16R-2
 EAST CONTRACT
 FROM 0.2 MILE EAST OF JACKSON ST.
 TO FRENCH CREEK
 WHITESIDE COUNTY
 SCALE: 1"=20'
 DATE 08/19/04
 DRAWN BY CAM
 CHECKED BY RDY

