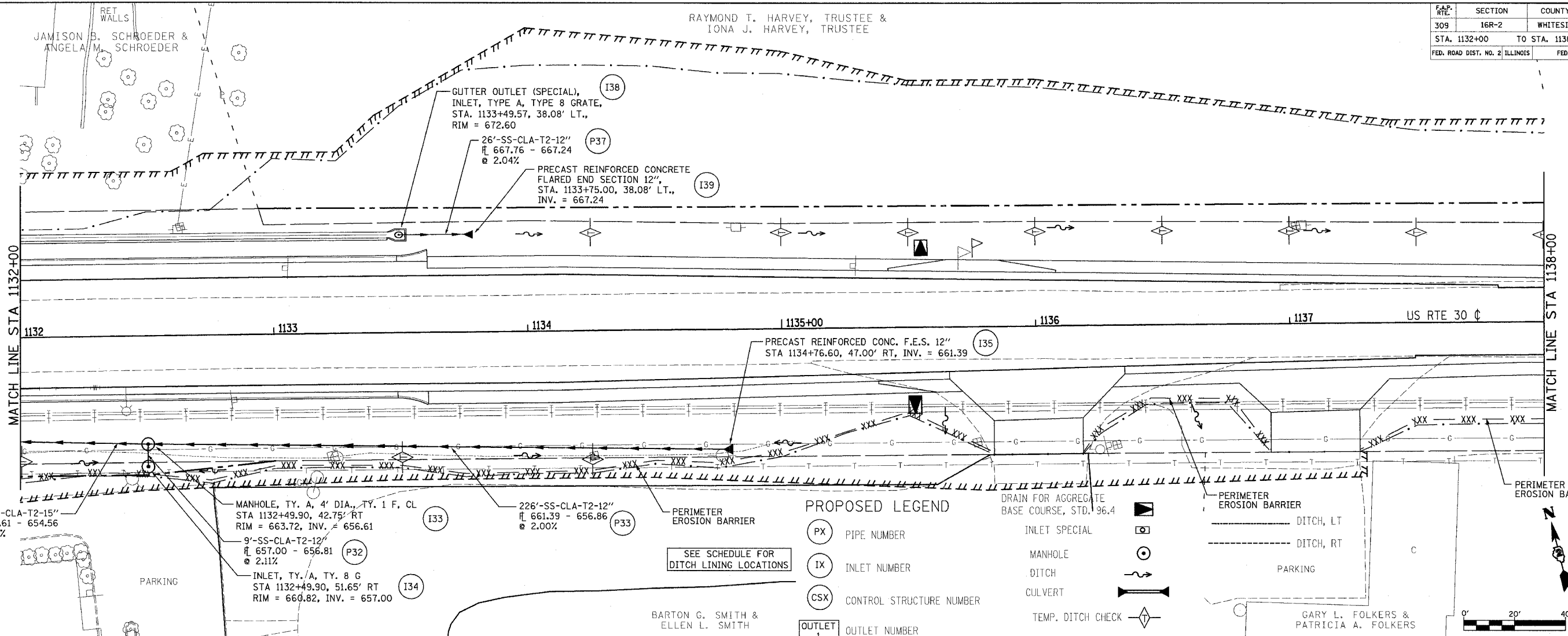


F.A.P. NO.	SECTION	COUNTY	TOTAL SHEETS	SHEET NO.
309	16R-2	WHITESIDE	547	121
STA. 1132+00		TO STA. 1138+00		
FED. ROAD DIST. NO. 2 ILLINOIS		FED. AID PROJECT		

RAYMOND T. HARVEY, TRUSTEE &
IONA J. HARVEY, TRUSTEE

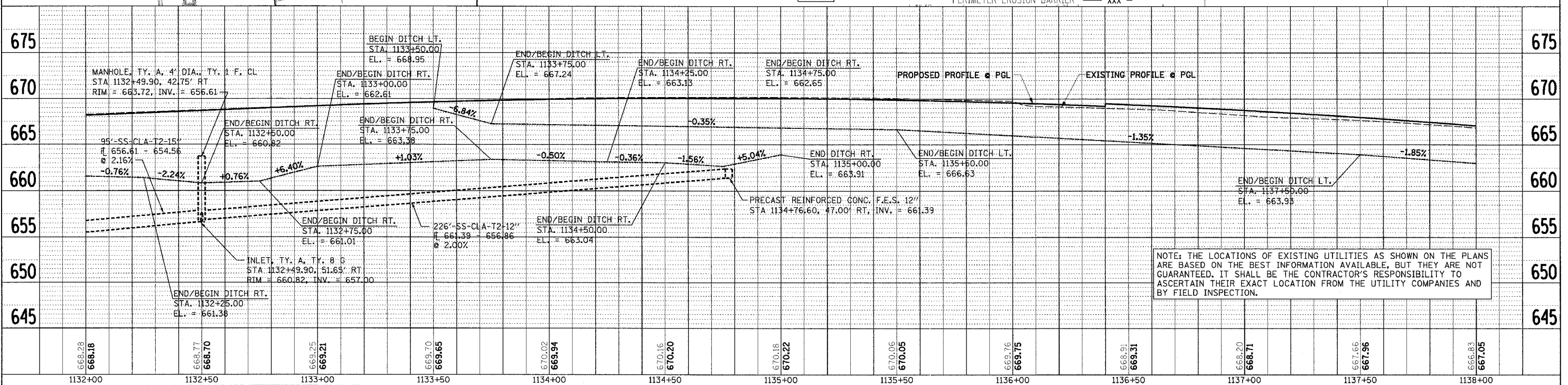
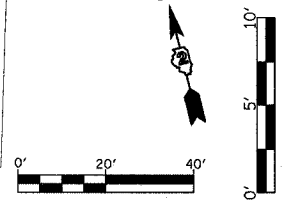


PROPOSED LEGEND

- PX PIPE NUMBER
- IX INLET NUMBER
- CSX CONTROL STRUCTURE NUMBER
- OUTLET 1 OUTLET NUMBER
- INLET SPECIAL
- MANHOLE
- DITCH
- CULVERT
- TEMP. DITCH CHECK
- PERIMETER EROSION BARRIER
- DITCH, LT
- DITCH, RT
- PARKING
- PERIMETER EROSION BARRIER
- PERIMETER EROSION BARRIER

BARTON G. SMITH &
ELLEN L. SMITH

GARY L. FOLKERS &
PATRICIA A. FOLKERS



NOTE: THE LOCATIONS OF EXISTING UTILITIES AS SHOWN ON THE PLANS ARE BASED ON THE BEST INFORMATION AVAILABLE, BUT THEY ARE NOT GUARANTEED. IT SHALL BE THE CONTRACTOR'S RESPONSIBILITY TO ASCERTAIN THEIR EXACT LOCATION FROM THE UTILITY COMPANIES AND BY FIELD INSPECTION.

DATE	BY	REVIEWED
PLAN	NO.	NO.
NOTE BOOK	NO.	NO.
ALIGNED	CHECKED	CHECKED
PLOTTED	FILED	FILED
DATE	BY	NO.

DATE	BY	REVIEWED
PROFILE	NO.	NO.
NOTE BOOK	NO.	NO.
GRADES	CHECKED	CHECKED
STRUCTURE	NOTATION	CHKO
DATE	BY	NO.

DATE	BY	REVIEWED
TIME	NO.	NO.
REF	REF	REF
REF	REF	REF

DRAINAGE AND EROSION CONTROL PLANS (US RTE 30)