

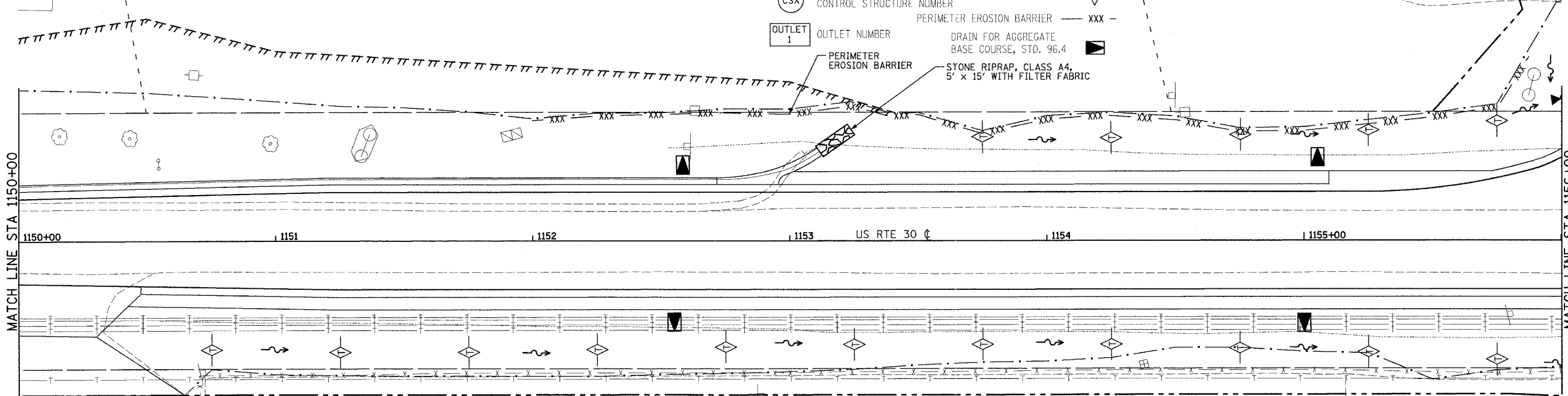
F.A.P. REL.	SECTION	COUNTY	TOTAL SHEETS	SHEET NO.
309	16R-2	WHITESIDE	547	124
STA. 1150+00		TO STA. 1156+00		
FED. ROAD DIST. NO. 2 ILLINOIS			FED. AID PROJECT	

BARBERA A. BERGE, 1/2 INTEREST
ESTATE OF DENNIS D. WOOD, 1/2 INTEREST

PROPOSED LEGEND

- (PX) PIPE NUMBER
- (IX) INLET NUMBER
- (CSX) CONTROL STRUCTURE NUMBER
- OUTLET 1 OUTLET NUMBER
- INLET SPECIAL
- MANHOLE
- DITCH
- CULVERT
- TEMP. DITCH CHECK
- PERIMETER EROSION BARRIER
- DRAIN FOR AGGREGATE BASE COURSE, STD. 96.4
- STONE RIPRAP, CLASS A4, 5' x 15' WITH FILTER FABRIC

JOEL A. MEDEMA



MATCH LINE STA 1150+00

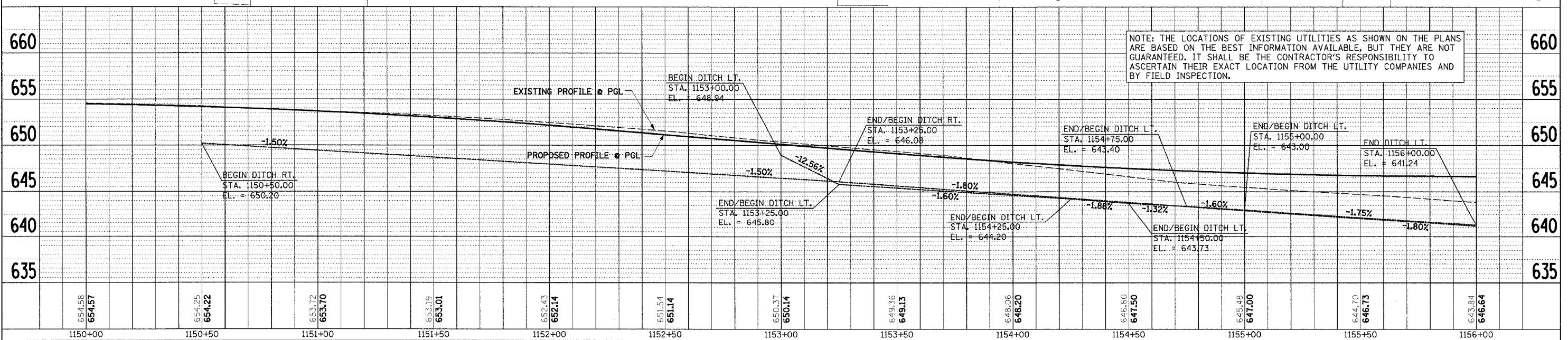
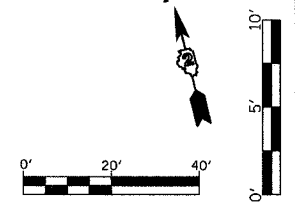
MATCH LINE STA 1156+00

1150+00 1151 1152 1153 US RTE 30 1154 1155+00

PARKING

BRUCE A. HUNTER, TRUSTEE &
VICKI J. HUNTER, TRUSTEE

SEE SCHEDULE FOR
DITCH LINING LOCATIONS



NOTE: THE LOCATIONS OF EXISTING UTILITIES AS SHOWN ON THE PLANS ARE BASED ON THE BEST INFORMATION AVAILABLE, BUT THEY ARE NOT GUARANTEED. IT SHALL BE THE CONTRACTOR'S RESPONSIBILITY TO ASCERTAIN THEIR EXACT LOCATION FROM THE UTILITY COMPANIES AND BY FIELD INSPECTION.

DATE	BY	REVISION
		REVISED
		REVISED
		REVISED
		REVISED
		REVISED

DATE	BY	REVISION
		REVISED
		REVISED
		REVISED
		REVISED
		REVISED

DATE: 12/12/2005 9:02:43 AM

DRAINAGE AND EROSION CONTROL PLANS (US RTE 30)