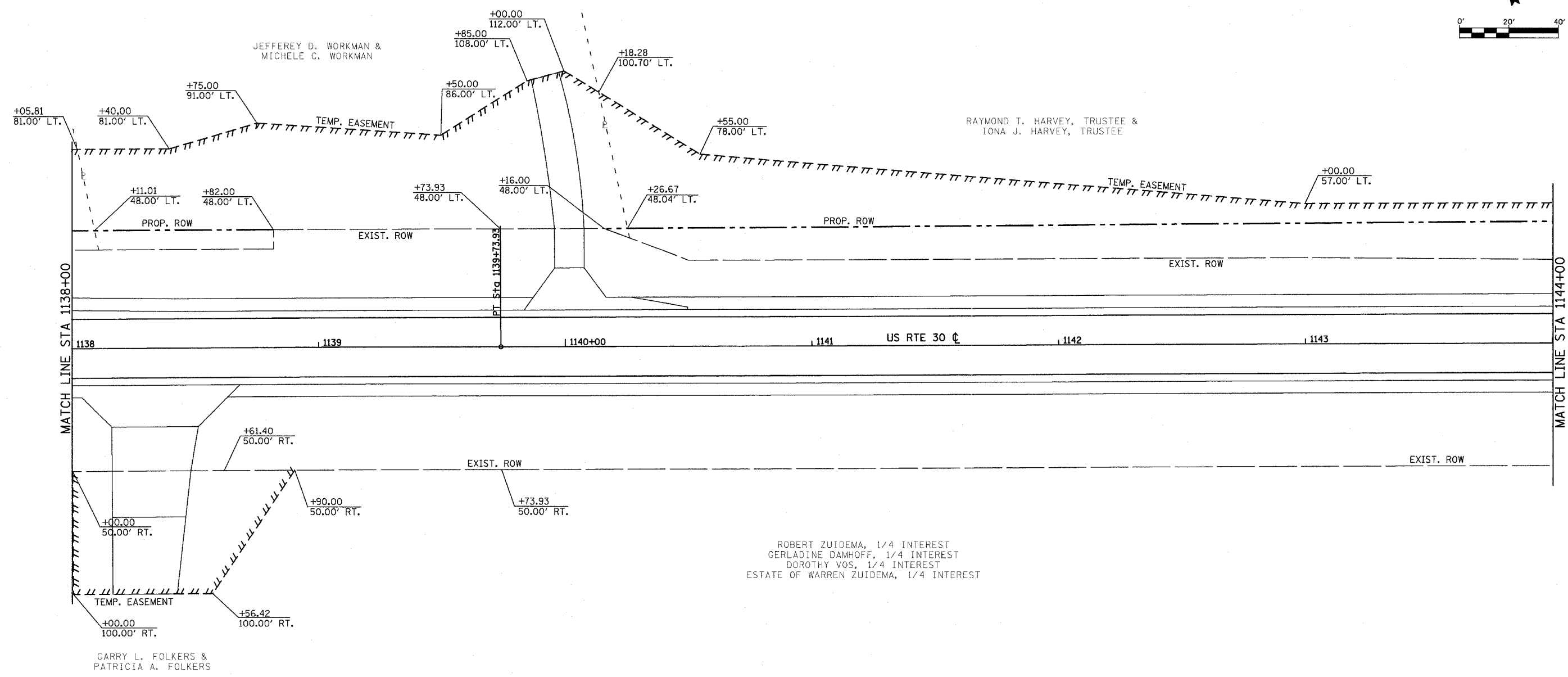
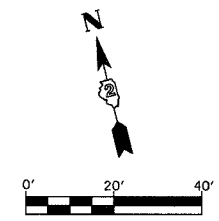


F.A.P. RTE.	SECTION	COUNTY	TOTAL SHEETS	SHEET NO.
309	16R-2	WHITESIDE	647	136
STA. 1138+00		TO STA. 1144+00		
FED. ROAD DIST. NO. 2		ILLINOIS	FED. AID PROJECT	



ROBERT ZUIDEMA, 1/4 INTEREST
 GERLADINE DAMHOFF, 1/4 INTEREST
 DOROTHY VOS, 1/4 INTEREST
 ESTATE OF WARREN ZUIDEMA, 1/4 INTEREST

REVISIONS		ILLINOIS DEPARTMENT OF TRANSPORTATION RIGHT OF WAY AND EASEMENT PLAN FAP ROUTE 309 (US 30) SECTION 16R-2 EAST CONTRACT FROM 0.2 MILE EAST OF JACKSON ST. TO FRENCH CREEK WHITESIDE COUNTY
NAME	DATE	

SCALE: 1"=20'
 DATE: _____ DRAWN BY: _____
 CHECKED BY: _____