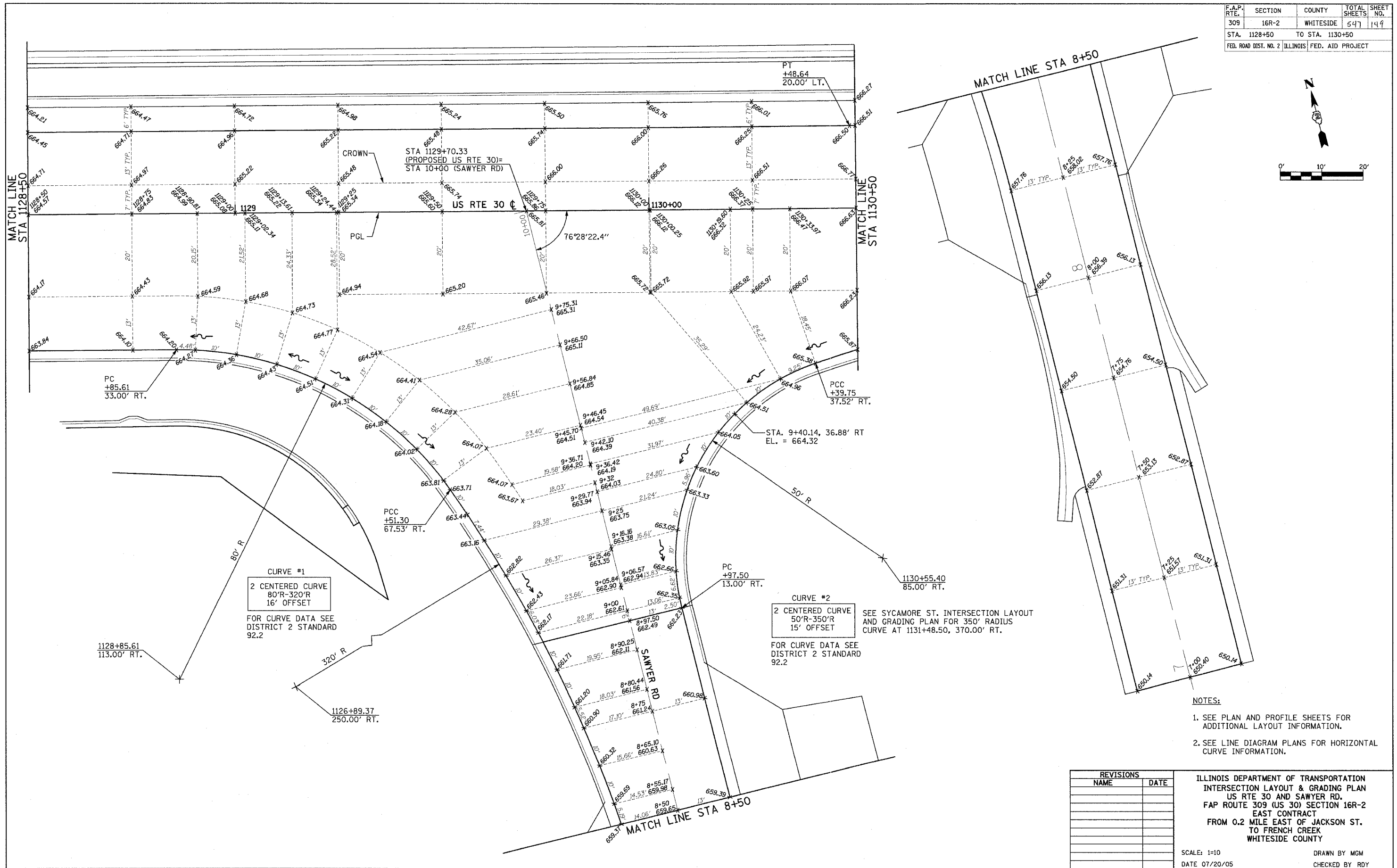
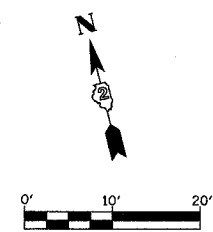


F.A.P. RTE.	SECTION	COUNTY	TOTAL SHEETS	SHEET NO.
309	16R-2	WHITESIDE	547	149
STA. 1128+50 TO STA. 1130+50		FED. ROAD DIST. NO. 2 ILLINOIS FED. AID PROJECT		



CURVE #1
 2 CENTERED CURVE
 80'R-320'R
 16' OFFSET
 FOR CURVE DATA SEE
 DISTRICT 2 STANDARD
 92.2

CURVE #2
 2 CENTERED CURVE
 50'R-350'R
 15' OFFSET
 FOR CURVE DATA SEE
 DISTRICT 2 STANDARD
 92.2

SEE SYCAMORE ST. INTERSECTION LAYOUT
 AND GRADING PLAN FOR 350' RADIUS
 CURVE AT 1131+48.50, 370.00' RT.

- NOTES:**
1. SEE PLAN AND PROFILE SHEETS FOR ADDITIONAL LAYOUT INFORMATION.
 2. SEE LINE DIAGRAM PLANS FOR HORIZONTAL CURVE INFORMATION.

REVISIONS	
NAME	DATE

ILLINOIS DEPARTMENT OF TRANSPORTATION
 INTERSECTION LAYOUT & GRADING PLAN
 US RTE 30 AND SAWYER RD.
 FAP ROUTE 309 (US 30) SECTION 16R-2
 EAST CONTRACT
 FROM 0.2 MILE EAST OF JACKSON ST.
 TO FRENCH CREEK
 WHITESIDE COUNTY

SCALE: 1=10
 DATE 07/20/05

DRAWN BY MGM
 CHECKED BY RDY