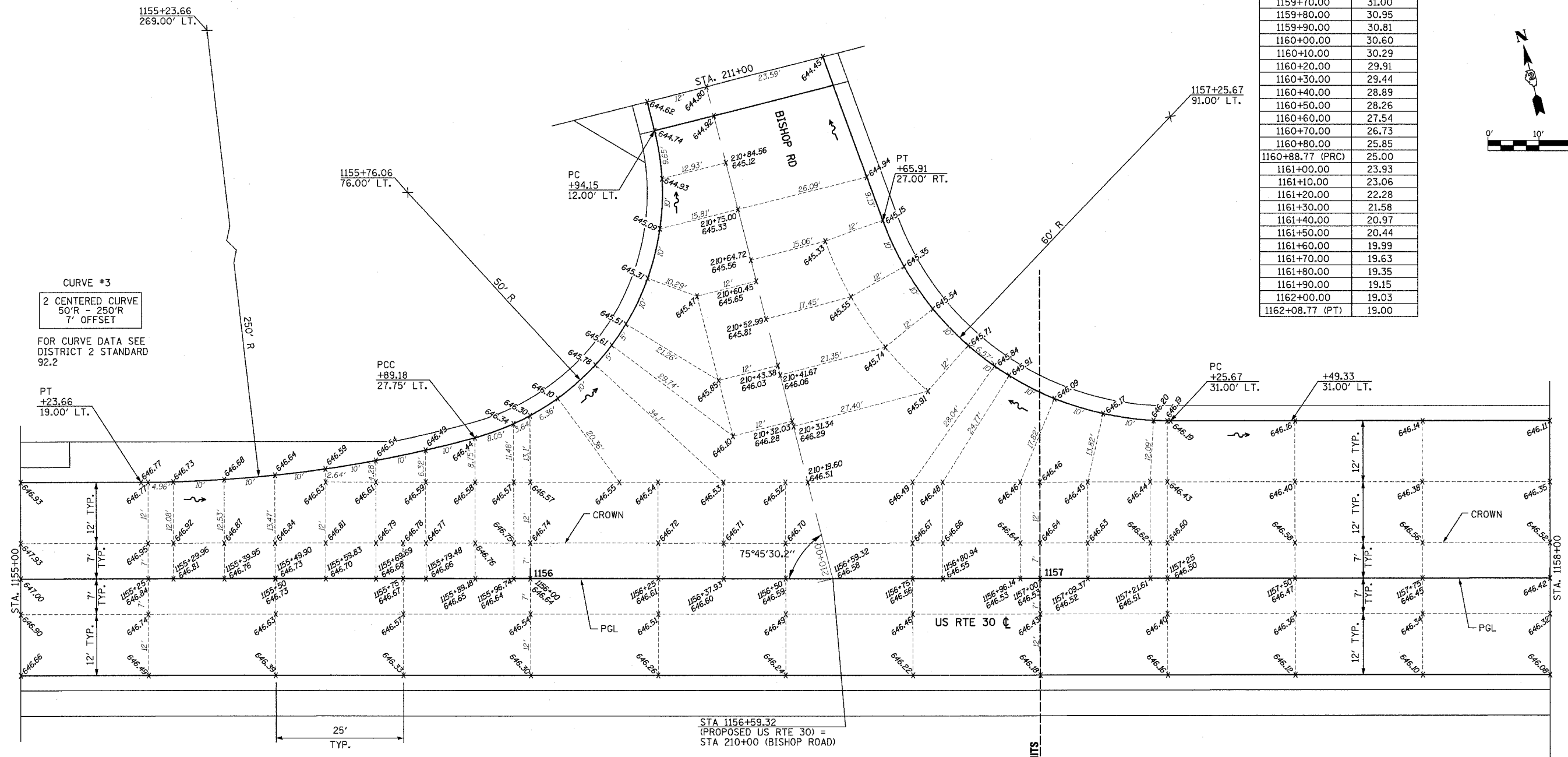
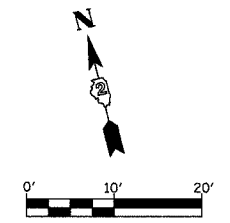


F.A.P. RTE.	SECTION	COUNTY	TOTAL SHEETS	SHEET NO.
309	16R-2	WHITESIDE	547	151
STA. 1155+00		TO STA. 1158+00		
FED. ROAD DIST. NO. 2 ILLINOIS FED. AID PROJECT				

STATION	OFFSET
1159+68.77 (PC)	31.00
1159+70.00	31.00
1159+80.00	30.95
1159+90.00	30.81
1160+00.00	30.60
1160+10.00	30.29
1160+20.00	29.91
1160+30.00	29.44
1160+40.00	28.89
1160+50.00	28.26
1160+60.00	27.54
1160+70.00	26.73
1160+80.00	25.85
1160+88.77 (PRC)	25.00
1161+00.00	23.93
1161+10.00	23.06
1161+20.00	22.28
1161+30.00	21.58
1161+40.00	20.97
1161+50.00	20.44
1161+60.00	19.99
1161+70.00	19.63
1161+80.00	19.35
1161+90.00	19.15
1162+00.00	19.03
1162+08.77 (PT)	19.00



**CURVE #3**  
 2 CENTERED CURVE  
 50'R - 250'R  
 7' OFFSET  
 FOR CURVE DATA SEE  
 DISTRICT 2 STANDARD  
 92.2

- NOTES:**
- SEE PLAN AND PROFILE SHEETS FOR ADDITIONAL LAYOUT INFORMATION.
  - SEE LINE DIAGRAM PLANS FOR HORIZONTAL CURVE INFORMATION.

REVISIONS	
NAME	DATE

ILLINOIS DEPARTMENT OF TRANSPORTATION  
 INTERSECTION LAYOUT & GRADING PLAN  
 US RTE 30 AND BISHOP RD.  
 FAP ROUTE 309 (US 30) SECTION 16R-2  
 EAST CONTRACT  
 FROM 0.2 MILE EAST OF JACKSON ST.  
 TO FRENCH CREEK, WHITESIDE COUNTY

SCALE: 1"=10'  
 DATE 07/21/05

DRAWN BY MGM  
 CHECKED BY ROY