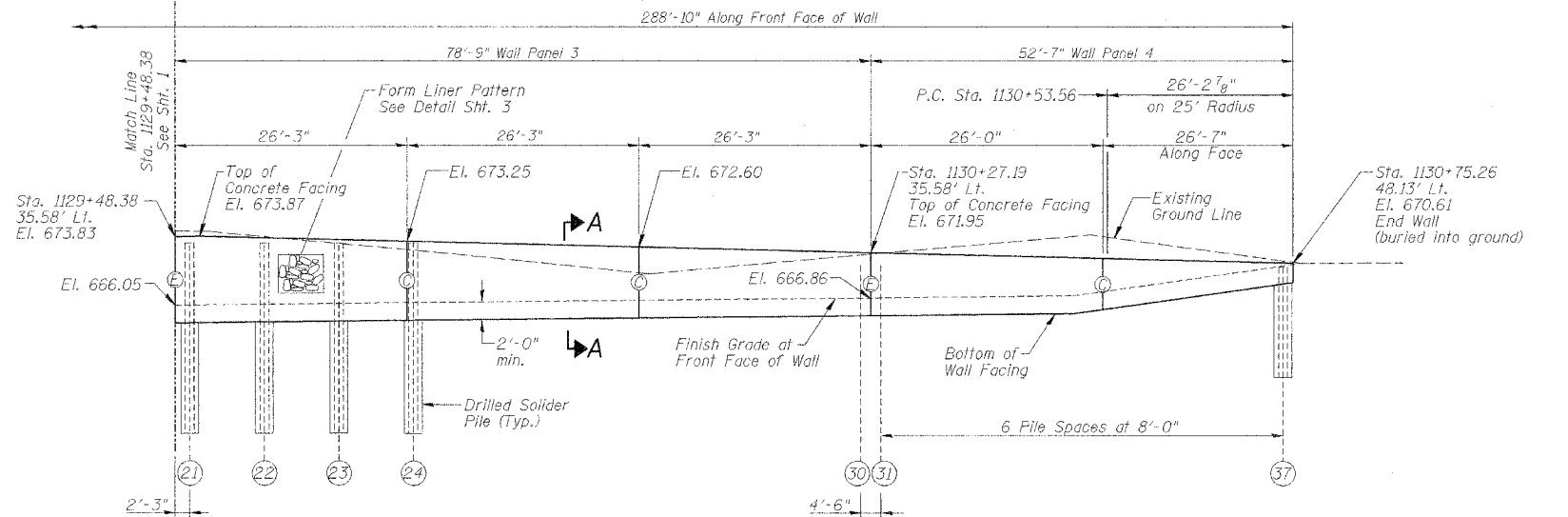


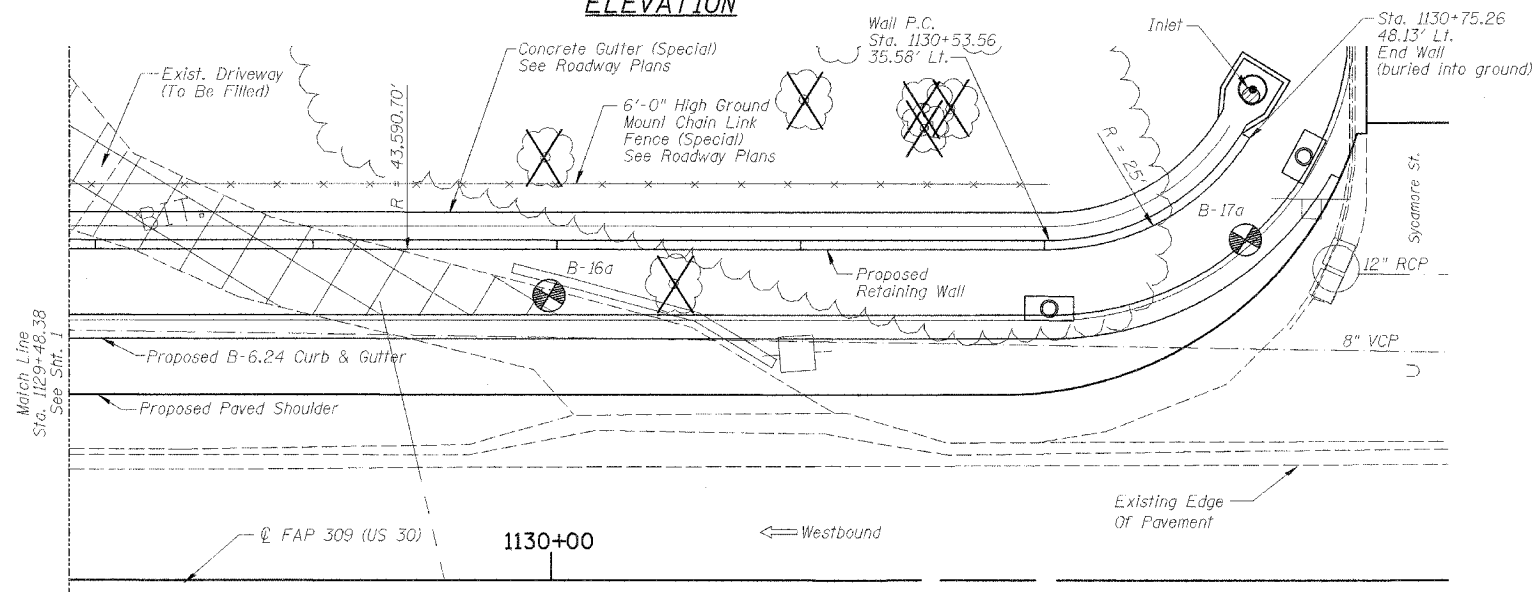
STATE OF ILLINOIS
DEPARTMENT OF TRANSPORTATION

ROUTE NO.	SECTION	COUNTY	TOTAL SHEETS	SHEET NO.	SHEET NO. 2
F.A.P. 309	16R-2	WHITESIDE	641	160	13 SHEETS
FED. ROAD DIST. NO. 4	ILLINOIS	FED. AID PROJECT			

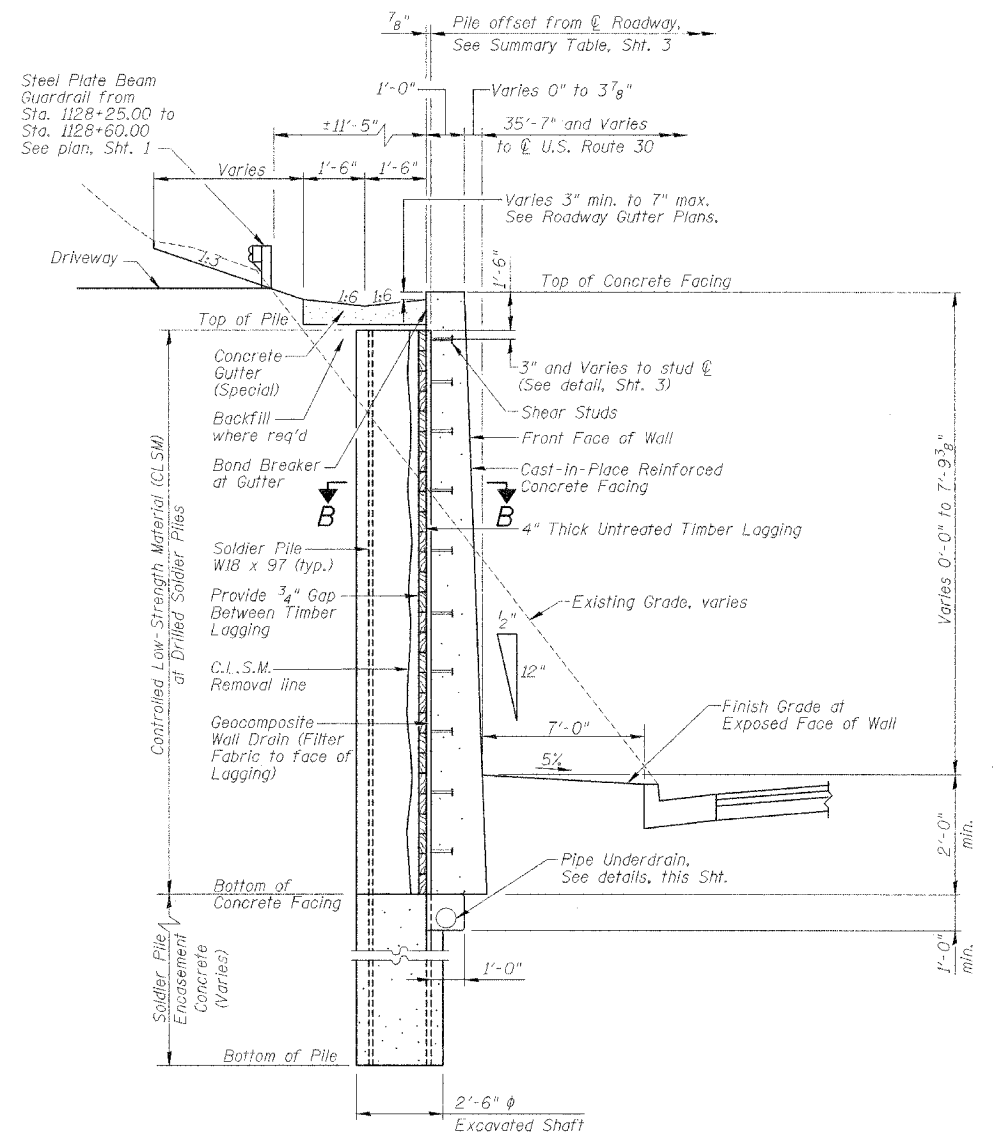
Contract No. 64969



ELEVATION



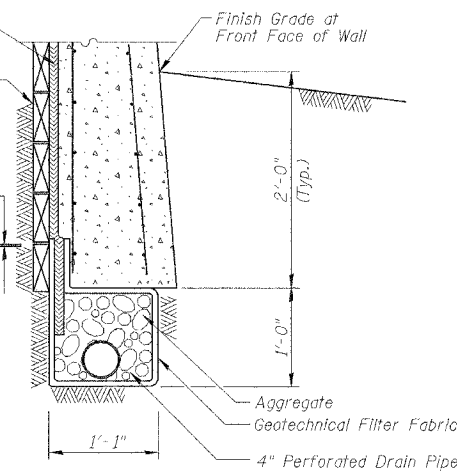
PLAN



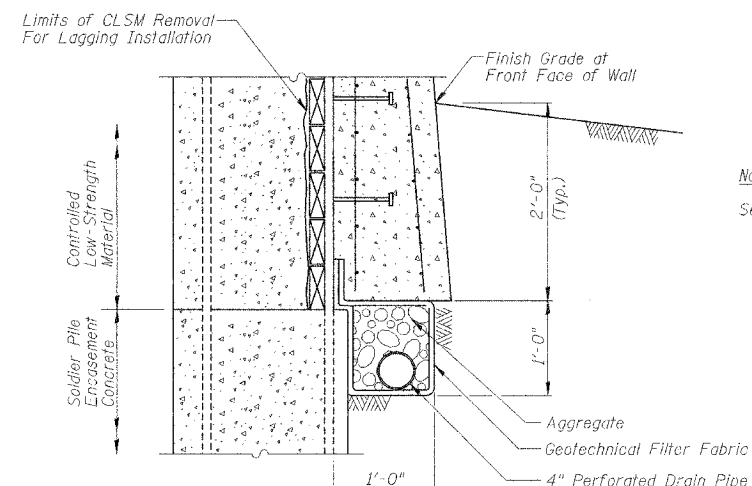
SECTION A-A
RETAINING WALL TYPICAL SECTION

See Sht. 3 for Section B-B.

DESIGNED	LLV
CHECKED	P.JL
DRAWN	MGM
CHECKED	LLV



UNDERDRAIN DETAIL
(Between Soldier Piles)



UNDERDRAIN DETAIL
(At Soldier Piles)

Note:
See Special Provision for Pipe Underdrains for Structures, 4'.

GENERAL PLAN & SECTION
RETAINING WALL NO. 1
U.S. RTE. 30 (LINCOLN HIGHWAY)
BETWEEN SCENIC ST. & SYCAMORE ST.
F.A.P. ROUTE 309 SECTION 16 R-2
WHITESIDE COUNTY
STA. 1127+90.75 TO
STA. 1130+75.26 (LT.)
STRUCTURE NO. 098-7001

STS CONSULTANTS
111 NE Jefferson Ave.
Peoria, Illinois 61602
Ph (309) 676-8464
FAX (309) 676-5445
IL Design Firm Reg. No. 184-001518