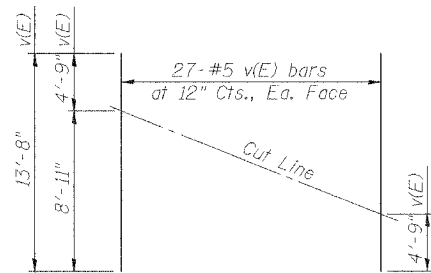
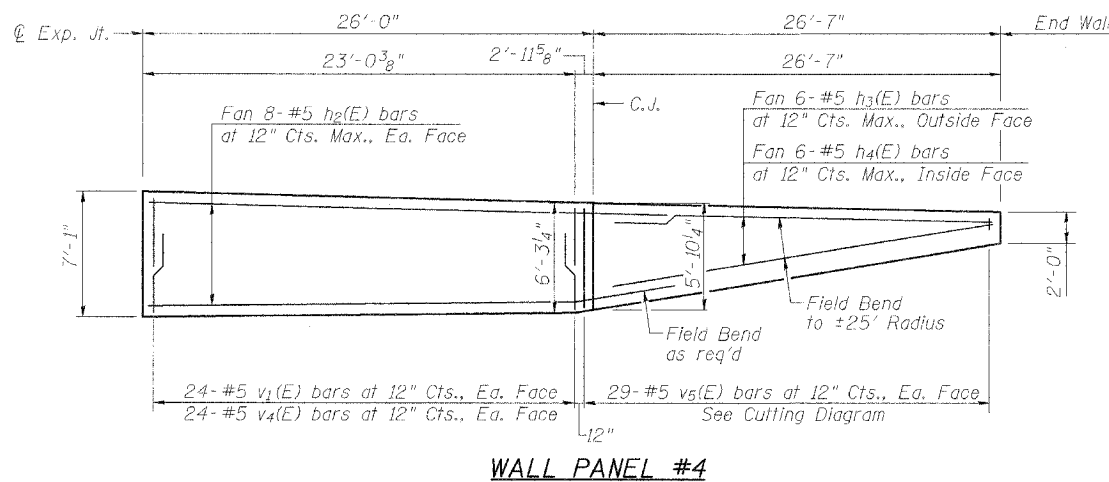
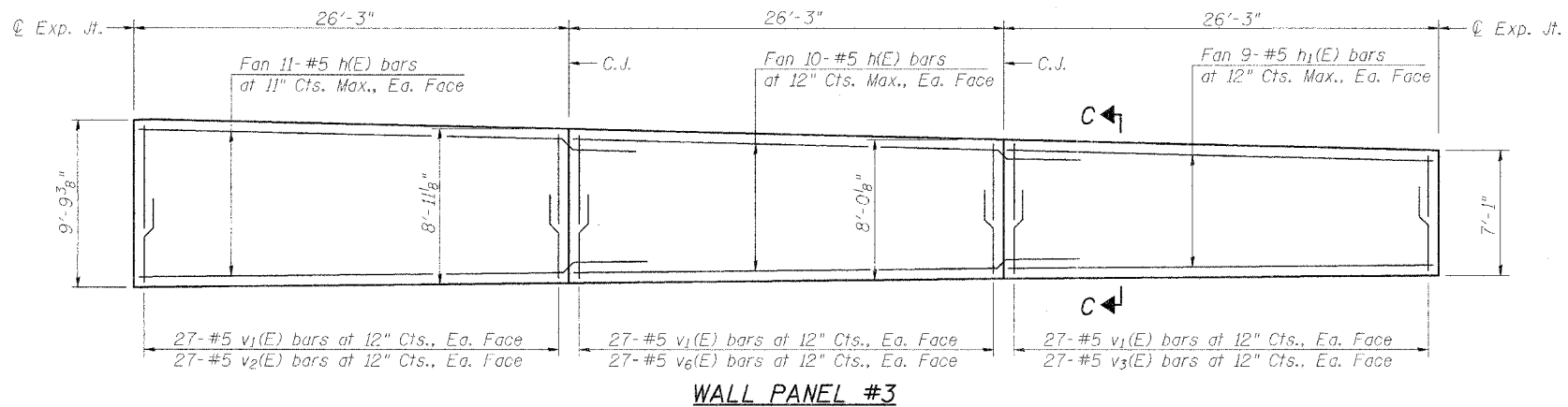
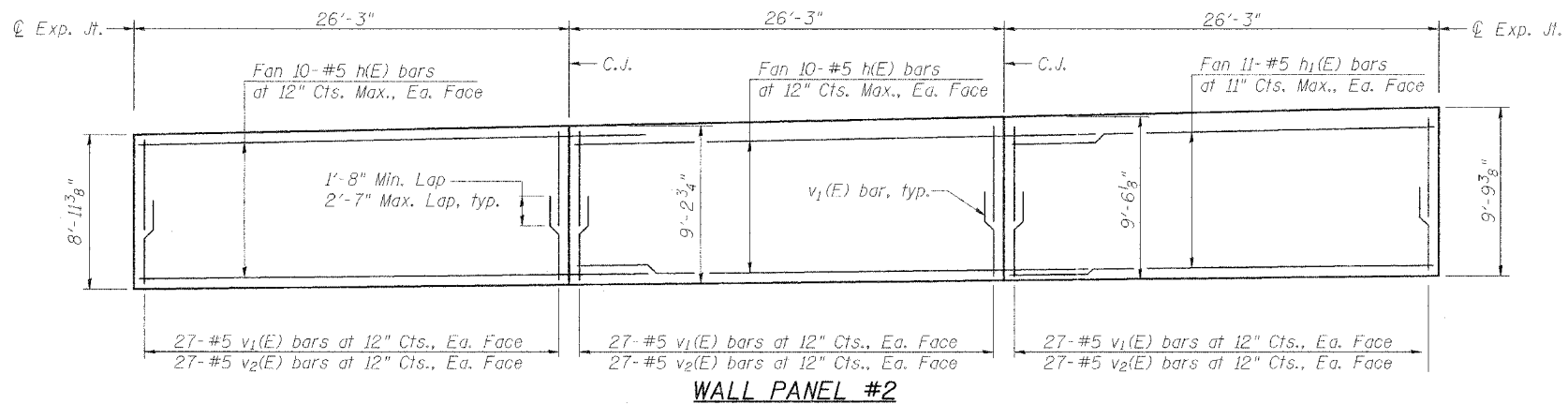
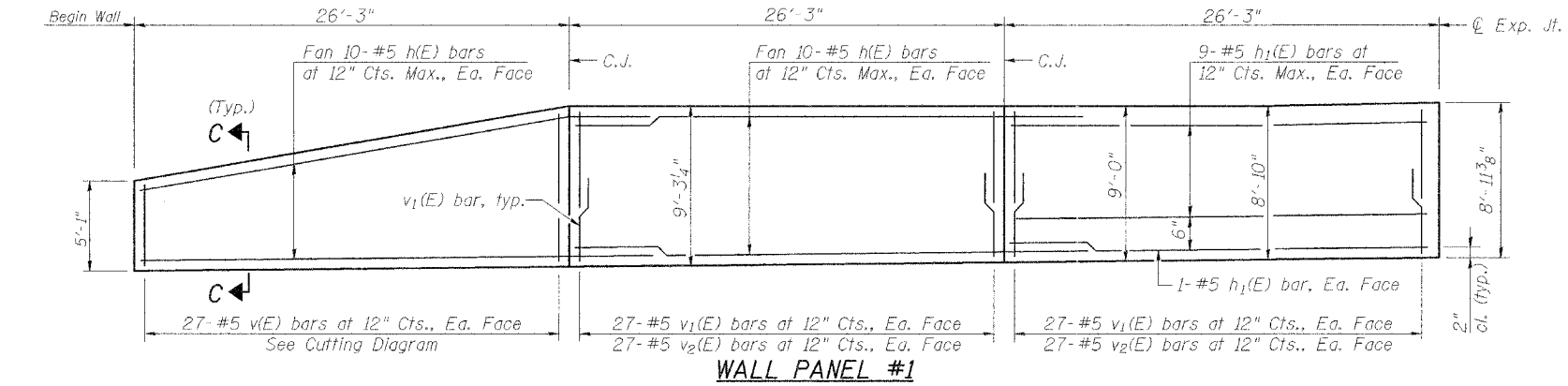


STATE OF ILLINOIS
DEPARTMENT OF TRANSPORTATION

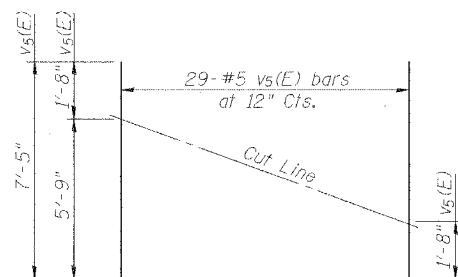
ROUTE NO.	SECTION	COUNTY	SHEET NO.	SHEET TOTAL
F.A.P. 309	16R-2	WHITESIDE	547	166
FED. ROAD DIST. NO.	ILLINOIS	FED. AID PROJECT		
			Contract No. 64969	

SHEET NO. 8
13 SHEETS



BAR CUTTING DIAGRAM

Order v(E) bars full length. Cut as shown and use remainder of bars in opposite wall face.



BAR CUTTING DIAGRAM

Order v3(E) bars full length. Cut as shown and use remainder of bars in opposite wall face.

MIN. BAR LAPS
#5 bars = 1'-8"

Note:
1. See Sht. 3 for Section C-C & Reinforcement Bar List.

DESIGNED	LLV
CHECKED	PJL
DRAWN	MGM
CHECKED	LLV

CONCRETE FACING FOR
SOLDIER PILE WALLS
RETAINING WALL NO. 1
U.S. RTE. 30 (LINCOLN HIGHWAY)
BETWEEN SCENIC ST. & SYCAMORE ST.
F.A.P. ROUTE 309 SECTION 16 R-2
WHITESIDE COUNTY
STA. 1127+90.75 TO
STA. 1130+75.26 (LT.)
STRUCTURE NO. 098-7001

STS CONSULTANTS
111 NE Jefferson Ave.
Peoria, Illinois 61602
Ph(309)676-8464
FAX(309)676-5445
IL Design Firm Reg. No. 184-001518