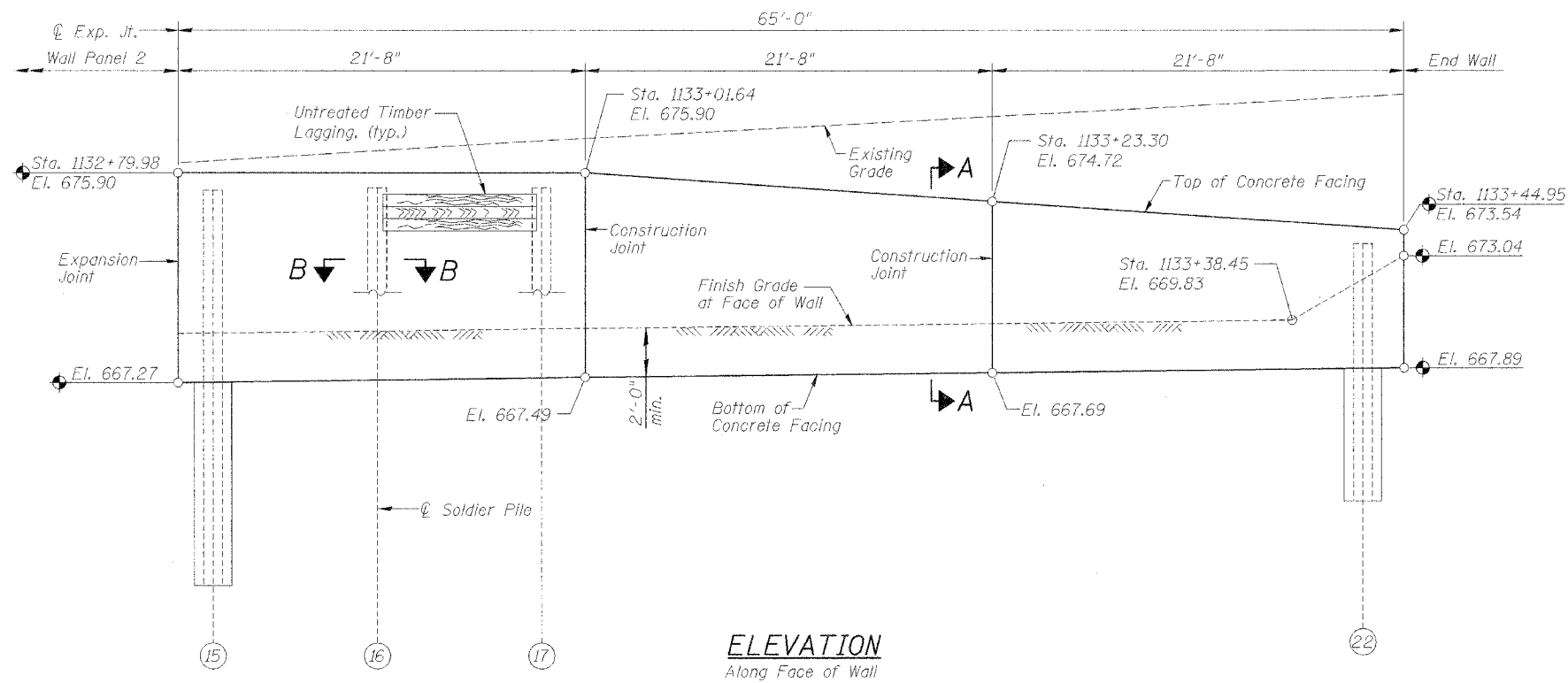


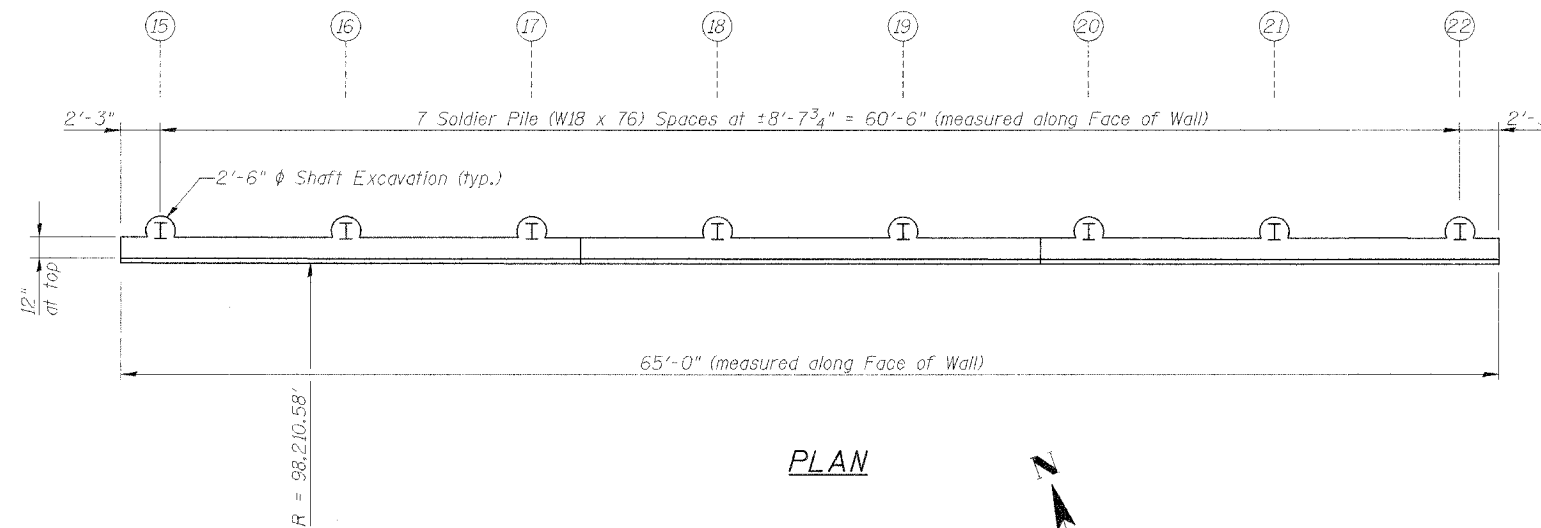
STATE OF ILLINOIS
DEPARTMENT OF TRANSPORTATION

ROUTE NO.	SECTION	COUNTY	SHEET NO.	SHEET NO.
F.A.P. 309	16R-2	WHITESIDE	547	177
FED. ROAD DIST. NO. 4	ILLINOIS	FED. AID PROJECT-		

Contract No. 64969



- Notes:
1. See Sht. 2 for Section A-A.
 2. See Sht. 3 for Section B-B and Pile Summary.
 3. See Sht. 7 for Reinforcement.



SOLDIER PILE WALL PANEL 3
RETAINING WALL NO. 2
U.S. RTE. 30 (LINCOLN HIGHWAY)
EAST OF SYCAMORE ST.
F.A.P. ROUTE 309 SECTION 16 R-2
WHITESIDE COUNTY
STA. 1131+71.68 TO
STA. 1133+44.95 (LT.)
STRUCTURE NO. 098-7002

DESIGNED	LLV
CHECKED	PJL
DRAWN	MCM
CHECKED	LLV

STS CONSULTANTS
111 NE Jefferson Ave.
Peoria, Illinois 61602
Ph(309)676-8464
FAX(309)676-5445
IL Design Firm Reg. No. 184-001518

12/21/2008 8:52:14 AM
 098-7002-1001.dgn