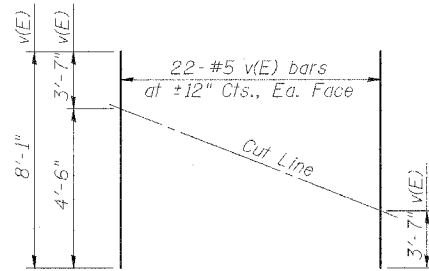


STATE OF ILLINOIS  
DEPARTMENT OF TRANSPORTATION

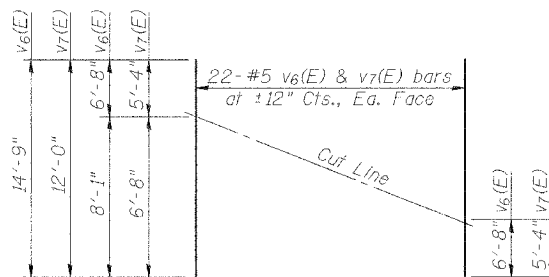
ROUTE NO.	SECTION	COUNTY	DISTRICT	SHEET NO.	SHEET NO. 7 11 SHEETS
F.A.P. 309	16R-2	WHITESIDE	647	178	
FED. ROAD DIST. NO. 4		ILLINOIS		FED. AID PROJECT	

Contract No. 64969



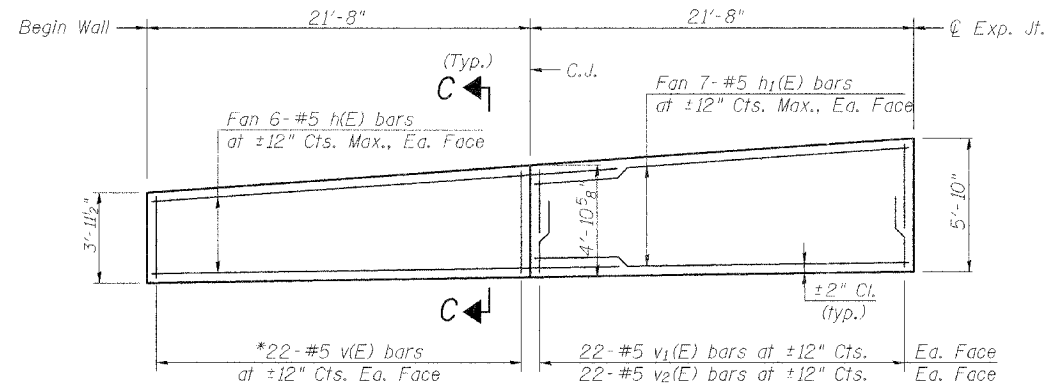
**BAR CUTTING DIAGRAM**

\*Order v(E) bars full length. Cut as shown and use remainder of bars in opposite wall face.

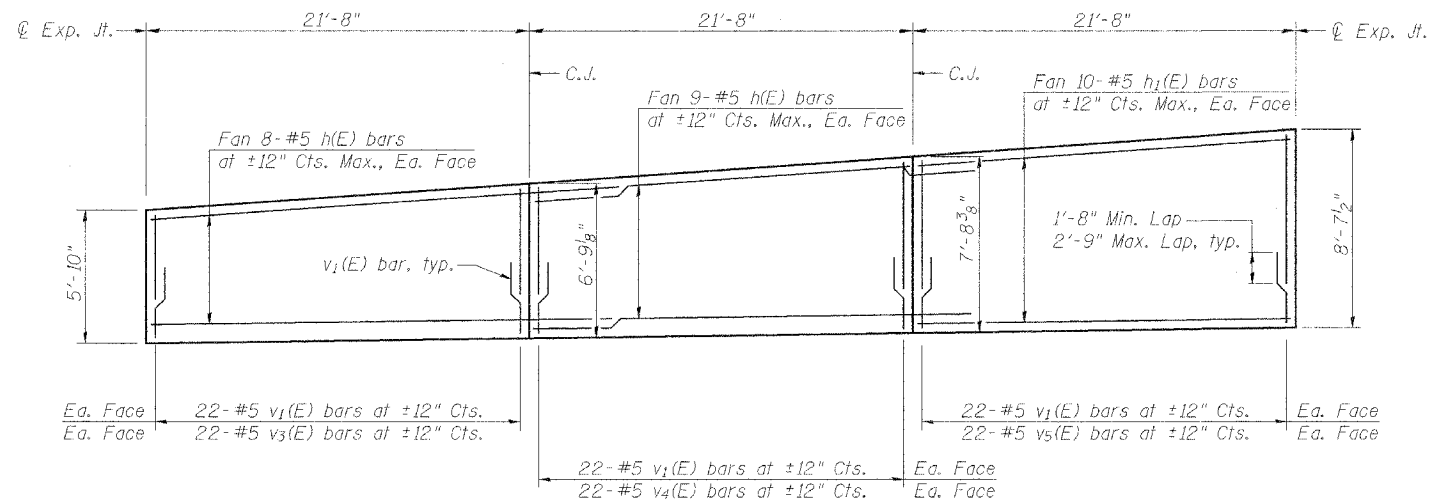


**BAR CUTTING DIAGRAM**

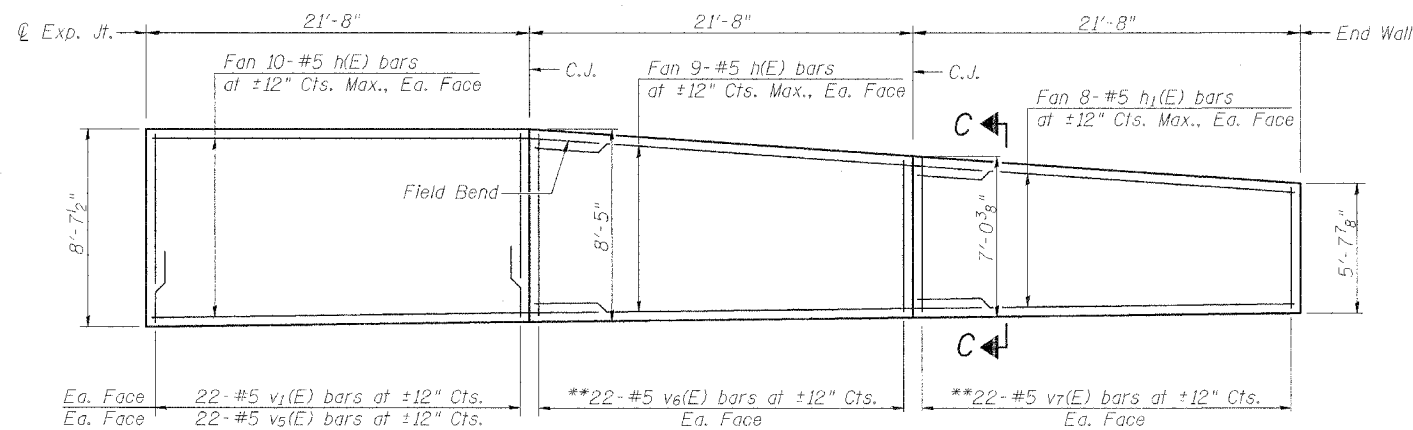
\*\*Order v6(E) and v7(E) bars full length. Cut as shown and use remainder of bars in opposite wall face.



**WALL PANEL #1**



**WALL PANEL #2**



**WALL PANEL #3**

**MIN. BAR LAPS**

#5 bars = 1'-8"

**Note:**

1. See Sht. 3 for Section C-C and Reinforcement Bar List.

CONCRETE FACING FOR  
SOLDIER PILE WALLS  
RETAINING WALL NO. 2  
U.S. RTE. 30 (LINCOLN HIGHWAY)  
EAST OF SYCAMORE ST.  
F.A.P. ROUTE 309 SECTION 16 R-2  
WHITESIDE COUNTY  
STA. 1131+71.68 TO  
STA. 1133+44.95 (LT.)  
STRUCTURE NO. 098-7002

DESIGNED	LLV
CHECKED	PJL
DRAWN	MGM
CHECKED	LLV

**STS CONSULTANTS**  
111 NE Jefferson Ave.  
Peoria, Illinois 61602  
Ph(309)676-8464  
FAX(309)676-5445  
IL Design Firm Reg. No. 184-001518