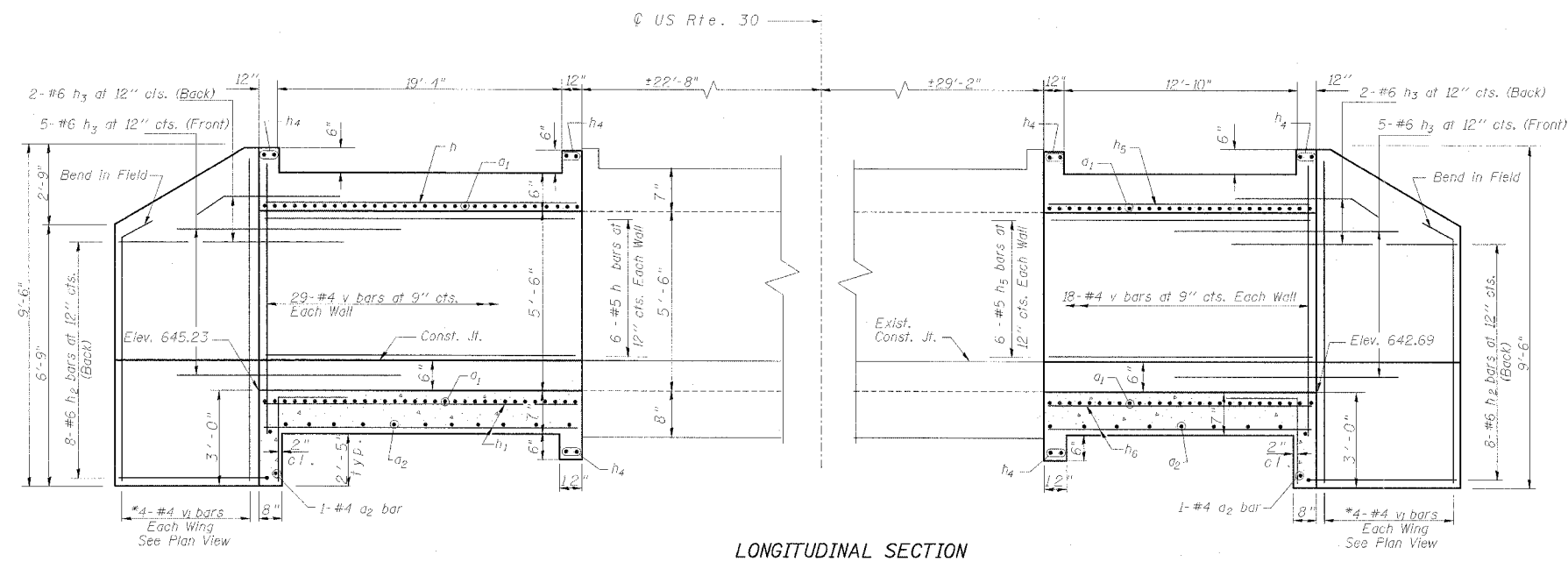


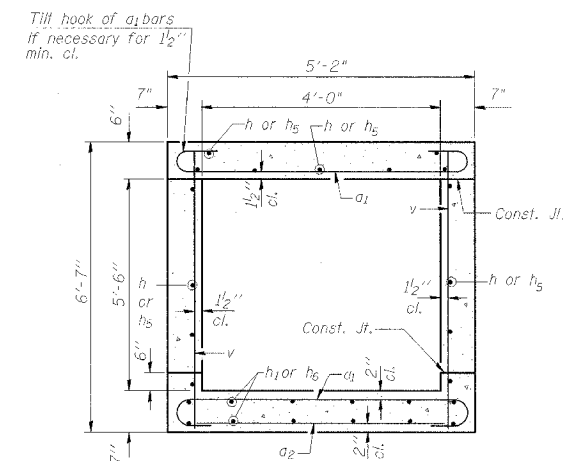
STATE OF ILLINOIS  
DEPARTMENT OF TRANSPORTATION

ROUTE NO.	SECTION	COUNTY	TOTAL SHEETS	SHEET NO.
F.A.P. 309	16R-2	WHITESIDE	641	185
FED. ROAD DIST. NO. 2	ILL. INDEX	FED. AID PROJECT		

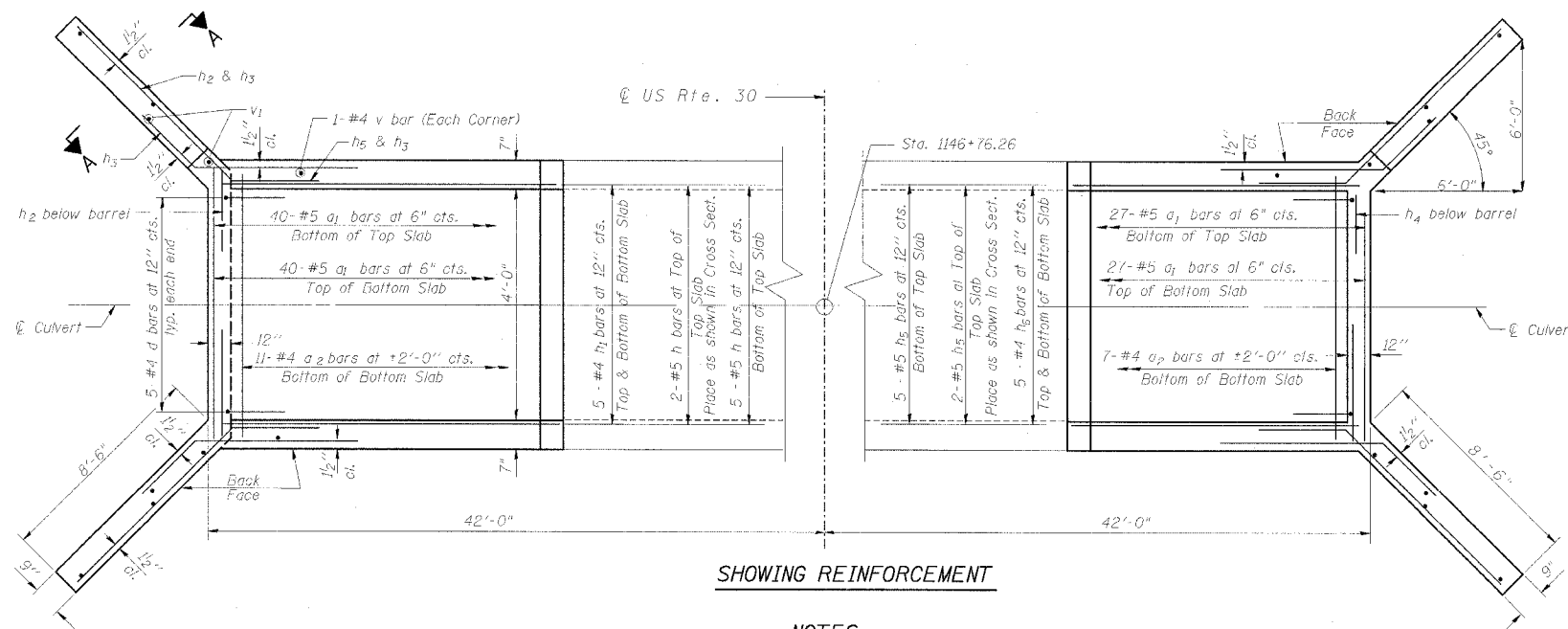
SHEET NO. 3  
5 SHEETS



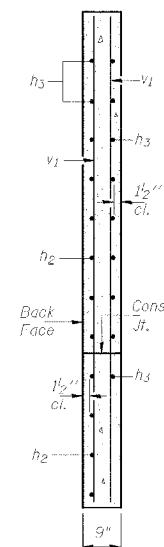
LONGITUDINAL SECTION



SECTION THRU BARREL



SHOWING REINFORCEMENT



SECTION A-A

NOTES

- A distance of half the length of the wingwall but not less than seven feet of the barrel shall be poured monolithically with the wingwalls.
- Reinforcement Bars shall conform to the requirements of AASHTO M-31, M-42 or M-53, Grade 60.
- All construction joints shall be bonded.

NOTE:  
Work this sheet with sheet 2 of 5.

DESIGNED	GEK
CHECKED	LSA
DRAWN	GEK
CHECKED	LSA

CULVERT & WINGWALL DETAILS  
US RTE. 30 - CATTLE PASS  
F.A.P. ROUTE 309 SECT. 16 R-2  
WHITESIDE COUNTY  
STATION 1146+76.26



111 W. Washington St., Suite 1750  
Chicago, IL 60602  
Ph.(312)628-3886  
Fax(312)628-3892  
IL Design Firm Registration  
No. 184-001518