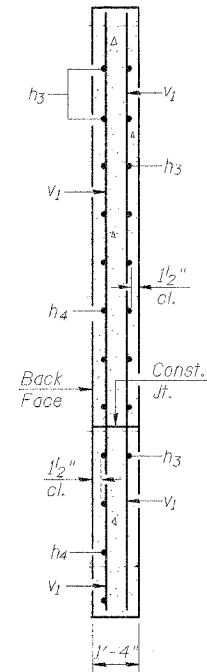


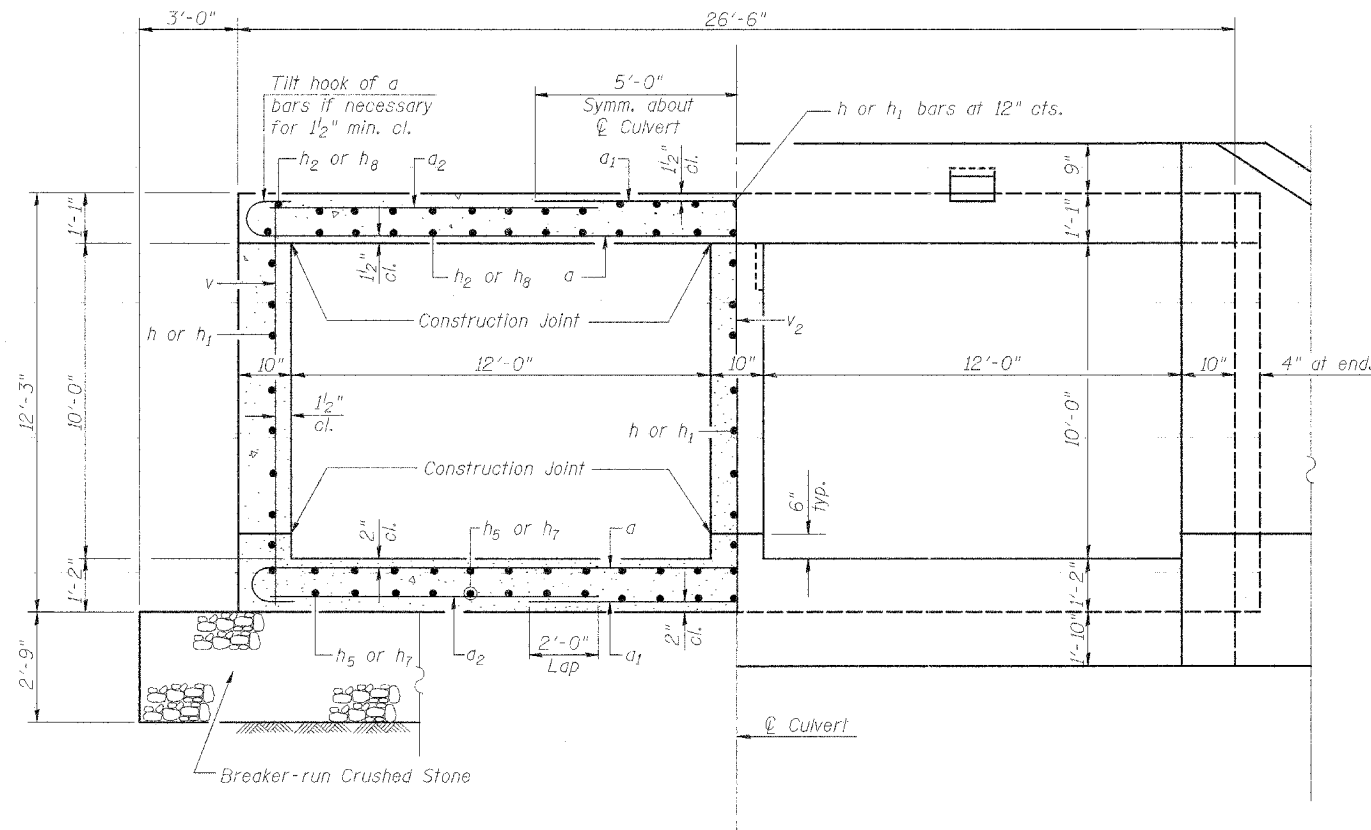
STATE OF ILLINOIS  
DEPARTMENT OF TRANSPORTATION

ROUTE NO.	SECTION	COUNTY	TOTAL SHEETS	SHEET NO.	SHEET NO. 4
F.A.P. 309	16R-2	WHITESIDE	577	191	7 SHEETS
FED. ROAD DIST. NO. 4	ILLINOIS	FED. AID PROJECT			

Contract # 64969



SECTION A-A  
Wing Wall

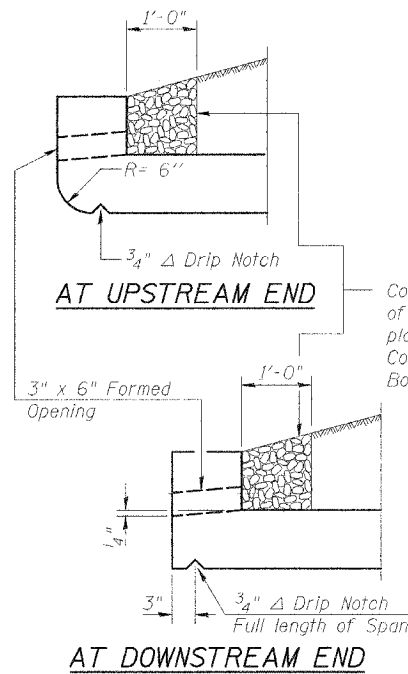


HALF SECTION  
THRU BARREL

HALF END ELEVATION

Note:

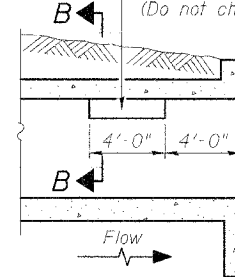
1. A distance of half the length of the wingwall but not less than 7'-0" of the barrel shall be poured monolithically with the wingwalls.



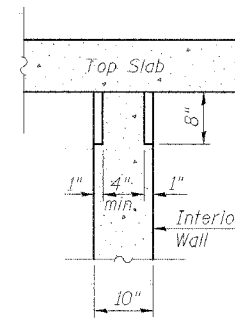
DRAIN DETAIL

Coarse aggregate full length of both headwalls. To be placed by Grading Contractor. Cost included with Concrete Box Culverts.

Notch formed by rough finished board attached to and removed with formwork, each interior wall. (Do not chamfer).



LONGITUDINAL  
SECTION



SECTION B-B

PHOEBE NESTING  
SITE DETAILS  
(Downstream End Only)

Note:  
Work this sheet with Sht. 3.

CULVERT SECTION AND DETAILS  
US RTE. 30 OVER UNNAMED CREEK  
F.A.P. ROUTE 309 SECT. 16R-2  
WHITESIDE COUNTY  
STATION 1158+14.82  
STRUCTURE NO. 098-2025

DESIGNED	LLV
CHECKED	BL
DRAWN	MGM
CHECKED	LLV

**STS CONSULTANTS**  
111 NE Jefferson Ave.  
Peoria, Illinois 61602  
Ph(309)676-8464  
FAX(309)676-5445  
IL Design Firm Reg. No. 64-00156