

STATE OF ILLINOIS  
DEPARTMENT OF TRANSPORTATION

ROUTE NO.	SECTION	COUNTY	TOTAL SHEETS	SHEET NO.
F.A.P. 309	16R-2	WHITESIDE	547	199
FED. ROAD DIST. NO. 2		ILLINOIS	FED. AID PROJECT-	
Contract No. 64969				



Illinois Department of Transportation  
Division of Highways  
IDOT

SOIL BORING LOG

Page 1 of 2

Date 8/16/91

ROUTE FA 309 DESCRIPTION P92-218-90 US 30 over French Creek LOGGED BY C. Jenkins  
SECTION 16 BR-1 LOCATION Mt. Pleasant Twp. - SW 1/4, SEC. 16, TWP. 21N, RNG. 5E  
COUNTY Whiteside DRILLING METHOD HAMMER TYPE

STRUCT. NO.	DEPTHS	BLWS	UCS	MOIST	Surface Water Elev.	DEPTHS	BLWS	UCS	MOIST
Station	(ft)	(/6")	(tsf)	(%)	ft	(ft)	(/6")	(tsf)	(%)
1169+98					632.5				
BORING NO. B-1					Stream Bed Elev.				
Station 1169+67					Groundwater Elev.:				
Offset 26.00R Rt CL					First Encounter 627.0				
Ground Surface Elev. 641.5					Upon Completion Wash				
					After 48 Hrs. 632.1				
MEDIUM brown SILTY LOAM			0.8 P	26	620.00				
STIFF brown SILTY LOAM	639.00	5	1.2 S	10	VERY DENSE gray well-cemented SAND & GRAVEL	617.50	10		
	637.50	3					23		
							43		
MEDIUM black/brown SILTY LOAM	635.00	2	0.7 S	28					
		5							
		5							
MEDIUM black SILTY LOAM	632.50	2	0.7 B	41	VERY STIFF gray SANDY CLAY TILL	612.50	25		
		2					27	3.7	11
		2					29		
SOFT black SANDY LOAM	629.50	1	0.3 B	32	Same as above	610.00	22		
		1					25	3.9	14
		1					30		
LOOSE gray SAND & GRAVEL	627.50	3			VERY STIFF gray SILTY CLAY TILL	607.50	14		
		2					17	3.7	11
		4					19		
MEDIUM tan fine to medium SAND with trace GRAVEL	625.00	3			Same as above	605.00	15		
		10					15	3.7	12
		8					16		
Begin Wash DENSE gray SAND & GRAVEL	622.50	16			Same as above	602.50	6		
		15					9	3.5	13
		18					15		

The Unconfined Compressive Strength (UCS) Failure Mode is indicated by (B-Bulge, S-Shear, P-Penetrometer)  
The SPT (N value) is the sum of the last two blow values in each sampling zone (AASHTO T206)  
BBS, from 137 (Rev. 8-89)



Illinois Department of Transportation  
Division of Highways  
IDOT

SOIL BORING LOG

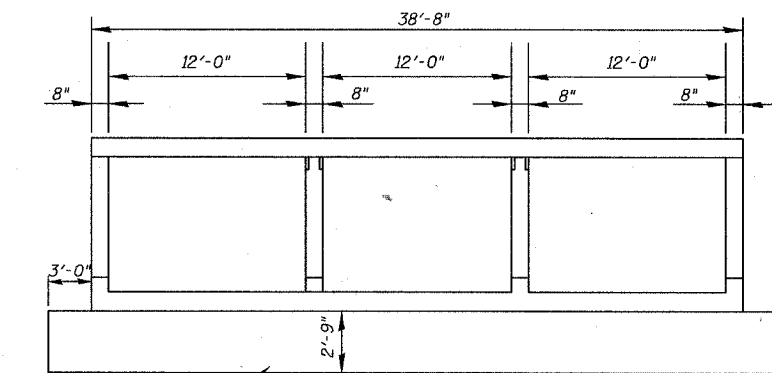
Page 2 of 2

Date 8/16/91

ROUTE FA 309 DESCRIPTION P92-218-90 US 30 over French Creek LOGGED BY C. Jenkins  
SECTION 16 BR-1 LOCATION Mt. Pleasant Twp. - SW 1/4, SEC. 16, TWP. 21N, RNG. 5E  
COUNTY Whiteside DRILLING METHOD HAMMER TYPE

STRUCT. NO.	DEPTHS	BLWS	UCS	MOIST	Surface Water Elev.	DEPTHS	BLWS	UCS	MOIST
Station	(ft)	(/6")	(tsf)	(%)	ft	(ft)	(/6")	(tsf)	(%)
1169+98					632.5				
BORING NO. B-1					Stream Bed Elev.				
Station 1169+67					Groundwater Elev.:				
Offset 26.00R Rt CL					First Encounter 627.0				
Ground Surface Elev. 641.5					Upon Completion Wash				
					After 48 Hrs. 632.1				
Same as above		6							
		10	3.5	11					
		14							
VERY DENSE gray/yellow weathered LIMESTONE	599.50								
		20							
		00/12							
		PEN							
HARD gray SILTY CLAY TILL with LIMESTONE fragments	595.00	20	5.8	11					
		25							
		20							
Same as above	592.50	27	6.1	11					
		17							
		22							
Same as above	590.00	20	6.1	11					
		24							
		23							
Same as above	587.50	17	5.1	10					
		17							
		21							
End of Boring									

The Unconfined Compressive Strength (UCS) Failure Mode is indicated by (B-Bulge, S-Shear, P-Penetrometer)  
The SPT (N value) is the sum of the last two blow values in each sampling zone (AASHTO T206)  
BBS, from 137 (Rev. 8-89)



Remove and replace with Breaker Run Crushed Stone  
**SECTION THRU BARREL**  
Soil Removal and Replacement

STATION 1169+99.31  
BUILT 200\_ BY  
STATE OF ILLINOIS  
F.A.P. Rt 309 Sec 16 R-2  
LOADING HS20  
STR. NO. 098-2021

**NAME PLATE**  
See Std. 515001

**BORING DATA AND DETAILS**  
U.S. RTE. 30 OVER FRENCH CREEK  
F.A.P. ROUTE 309 SECT. 16 R-2  
WHITESIDE COUNTY  
STATION 1169+99.31  
STRUCTURE NUMBER 098-2021

DESIGNED	DJC
CHECKED	WDL
DRAWN	JSD
CHECKED	WDL



111 W. Washington St., Suite 1750  
Chicago, IL 60602  
Ph.(312)628-3886  
Fax(312)628-3892  
IL Design Firm Registration  
No. 184-001518