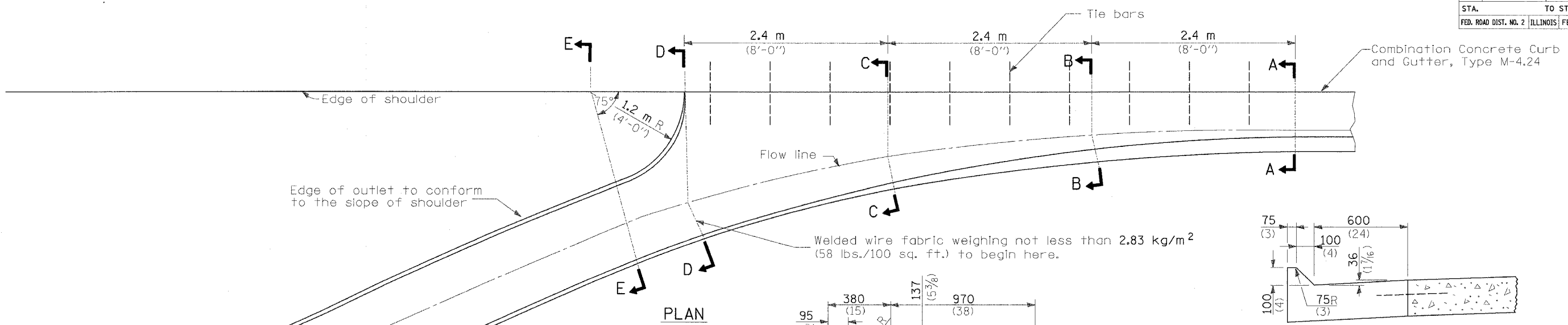
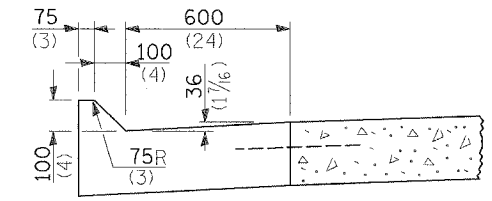


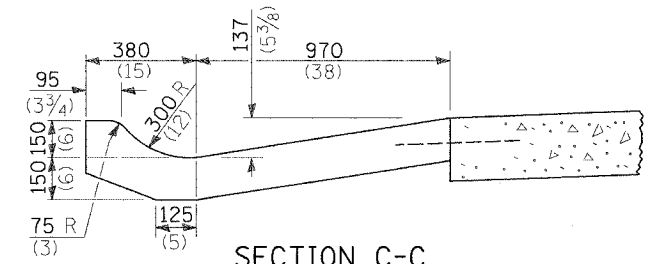
| | | | | |
|-----------------------|----------|------------------|--------------|-----------|
| F.A.P. R.T.E. | SECTION | COUNTY | TOTAL SHEETS | SHEET NO. |
| 309 | 16R-2 | WHITESIDE | 547 | 203 |
| STA. | TO STA. | | | |
| FED. ROAD DIST. NO. 2 | ILLINOIS | FED. AID PROJECT | | |



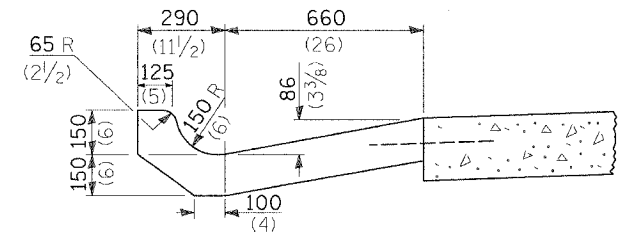
PLAN



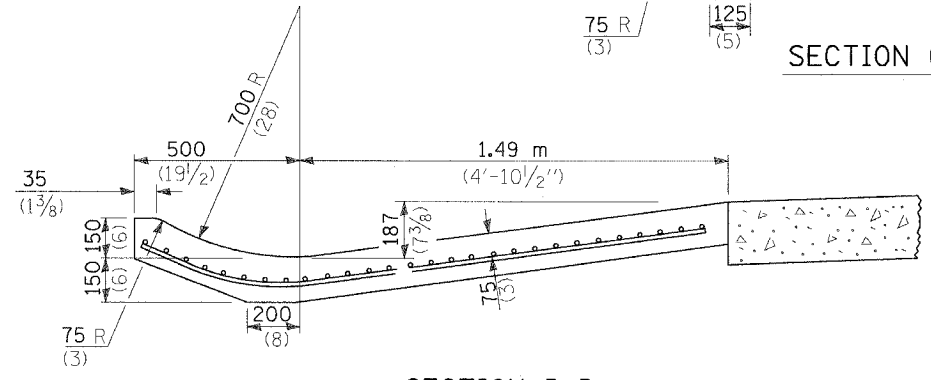
SECTION A-A



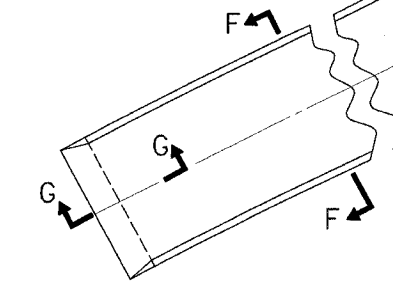
SECTION C-C



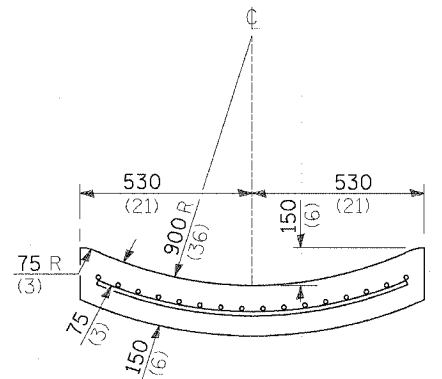
SECTION B-B



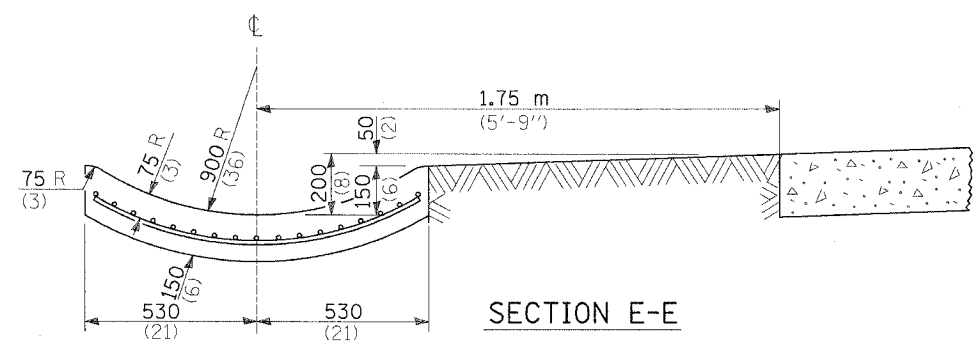
SECTION D-D



SECTION G-G



SECTION F-F



SECTION E-E

GENERAL NOTES

Tie bars shall be No. 20 (No. 6) at 600 mm (24") centers unless otherwise shown.

Gutter outlet shall be tied to the pavement in accordance with details for longitudinal construction joint shown on Standard 420001.

If the average grade of pavement for the distance from Section A-A to D-D exceeds 2%, this distance shall be increased 1.8 m (6 feet) for each 1% increase in grade.

All dimensions are in millimeters (inches) unless otherwise shown.

QUANTITIES

For Section A-A to E-E and curtain wall =
 1.82 m³ (2.38 cu. yds.) concrete for (225 (9) pav't.)
 1.84 m³ (2.41 cu. yds.) concrete for (250 (10) pav't.)
 For Section F-F =
 .17 m³ (0.069 cu. yds.) concrete per m (ft.)

| REVISIONS | |
|-----------|------|
| NAME | DATE |
| | |
| | |
| | |
| | |
| | |
| | |
| | |
| | |
| | |

ILLINOIS DEPARTMENT OF TRANSPORTATION
 OUTLET FOR COMBINATION CONCRETE CURB
 AND GUTTER, TYPE M-4.24
 FAP ROUTE 309 (US 30) SECTION 16R-2
 EAST CONTRACT FROM
 0.2 MILE EAST OF JACKSON ST. TO FRENCH CREEK
 WHITESIDE COUNTY
 SCALE: N.T.S. DRAWN BY BRD
 DATE 10/17/05 CHECKED BY RDY