

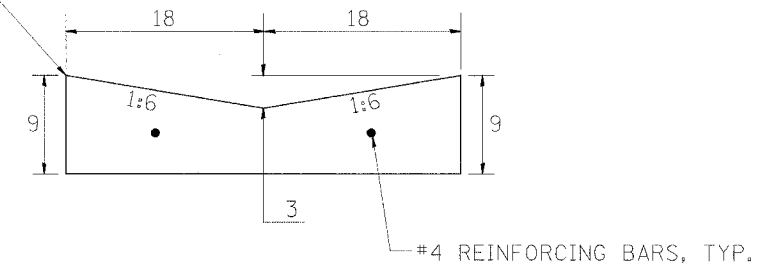
F.A.P. RTE.	SECTION	COUNTY	TOTAL SHEETS	SHEET NO.
309	16R-2	WHITESIDE	547	207
STA.	TO STA.			
FED. ROAD DIST. NO. 2	ILLINOIS	FED. AID PROJECT		

TOP OF CONCRETE GUTTER (SPECIAL) ELEVATIONS

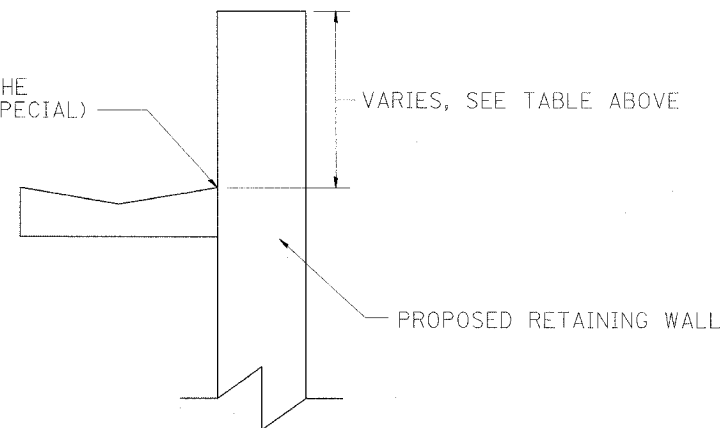
STATION	TOP OF CONCRETE GUTTER (SPECIAL) ELEVATION	TOP OF WALL - (MINUS) TOP OF GUTTER ELEVATION
STRUCTURE 7001		
1127+90.75	667.50	0.50 FT.
1128+17.00	671.38	0.58 FT.
1128+59.05	671.72	0.25 FT.
1128+69.50	671.94	0.25 FT.
1129+48.38	673.33	0.50 FT.
1130+75.26	670.11	0.50 FT.
STRUCTURE 7002		
1131+71.68	669.60	0.50 FT.
1132+79.98	675.40	0.50 FT.
1132+90.81	675.65	0.25 FT.
1133+01.64	675.40	0.50 FT.
1133+44.95	673.04	0.50 FT.

CONCRETE GUTTER (SPECIAL)

TOP OF CONCRETE GUTTER (SPECIAL) ELEVATION (SEE TABLE)



BOND BREAKER, INCLUDED IN THE COST OF CONCRETE GUTTER (SPECIAL)



NOTES:

THIS WORK SHALL BE DONE IN ACCORDANCE WITH THIS DETAIL.
THIS WORK SHALL BE PAID FOR AT THE CONTRACT UNIT PRICE PER FOOT FOR CONCRETE GUTTER (SPECIAL).

ALL DIMENSIONS ARE IN INCHES UNLESS OTHERWISE NOTED.

REVISIONS		ILLINOIS DEPARTMENT OF TRANSPORTATION CONCRETE GUTTER (SPECIAL) FAP ROUTE 309 (US 30) SECTION 16R-2 EAST CONTRACT FROM 0.2 MILE EAST OF JACKSON ST. TO FRENCH CREEK WHITESIDE COUNTY
NAME	DATE	
SCALE: N.T.S.	DRAWN BY: BRD	
DATE: 10/31/05	CHECKED BY: RDY	