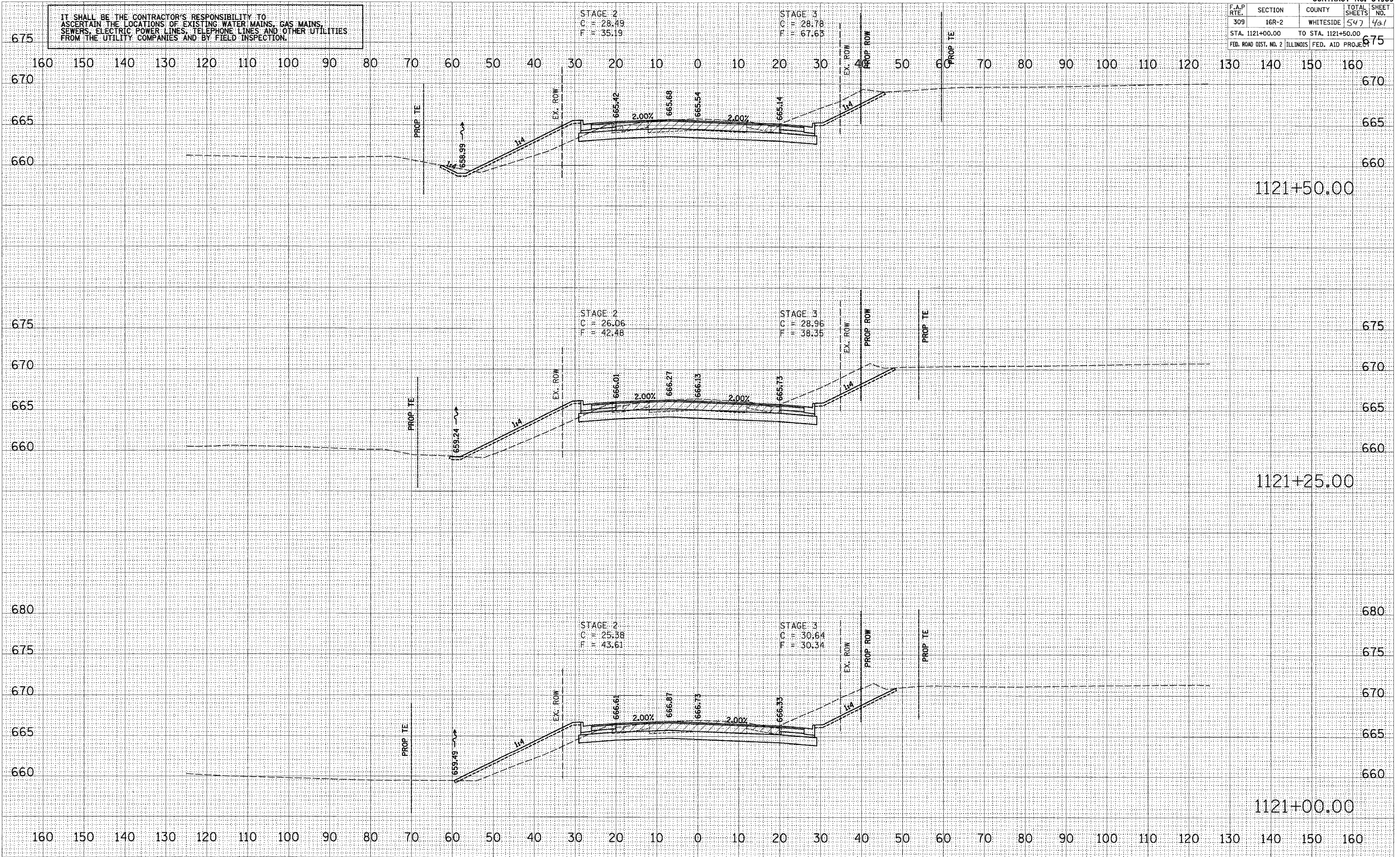


F.A.P. RTE.	SECTION	COUNTY	TOTAL SHEETS	SHEET NO.
309	16R-2	WHITESIDE	547	461
STA. 1121+00.00		TO STA. 1121+50.00		675
FED. ROAD DIST. NO. 2		ILLINOIS		FED. AID PROJECT

IT SHALL BE THE CONTRACTOR'S RESPONSIBILITY TO ASCERTAIN THE LOCATIONS OF EXISTING WATER MAINS, GAS MAINS, SEWERS, ELECTRIC POWER LINES, TELEPHONE LINES AND OTHER UTILITIES FROM THE UTILITY COMPANIES AND BY FIELD INSPECTION.



BY	DATE

BY	DATE

\* PLOT DATE = DATE  
 \* PLOT NAME = FILENAME  
 \* PLOT SCALE = SCALE  
 \* USER NAME = USERNAME