

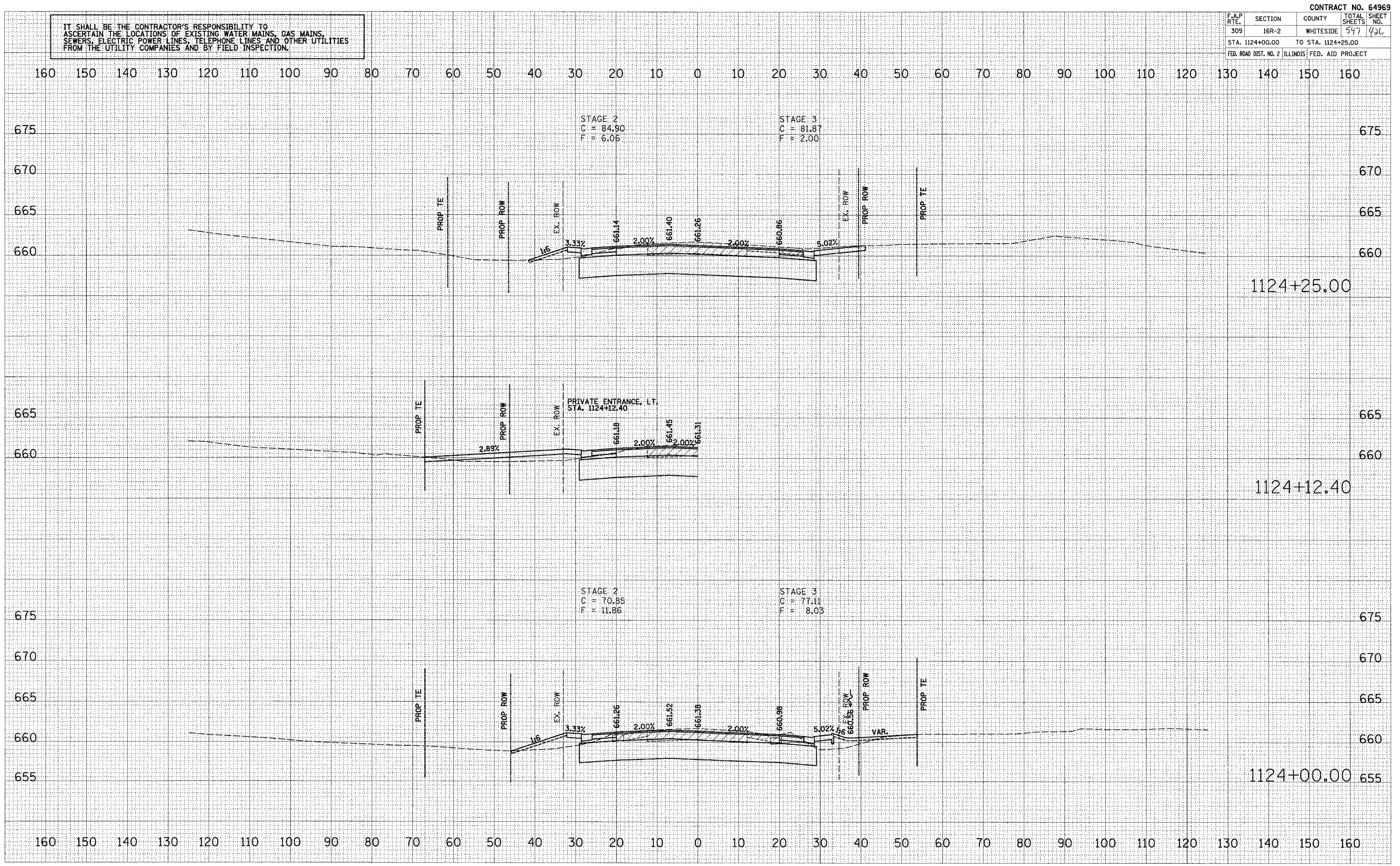
| F.A.P. RTE. | SECTION | COUNTY | TOTAL SHEETS | SHEET NO. |
|-----------------------|---------|---------------------------|--------------|-----------|
| 309 | 16R-2 | WHITESIDE | 597 | 426 |
| STA. 1124+00.00 | | TO STA. 1124+25.00 | | |
| FED. ROAD DIST. NO. 2 | | ILLINOIS FED. AID PROJECT | | |

IT SHALL BE THE CONTRACTOR'S RESPONSIBILITY TO ASCERTAIN THE LOCATIONS OF EXISTING WATER MAINS, GAS MAINS, SEWERS, ELECTRIC POWER LINES, TELEPHONE LINES AND OTHER UTILITIES FROM THE UTILITY COMPANIES AND BY FIELD INSPECTION.

| | |
|---------------|--|
| DATE | |
| BY | |
| NO. | |
| FINAL SURVEY | |
| REVISIONS | |
| PLOTTED | |
| TEMPLATE | |
| AREAS CHECKED | |

| | |
|-----------------|--|
| DATE | |
| BY | |
| NO. | |
| ORIGINAL SURVEY | |
| REVISIONS | |
| PLOTTED | |
| TEMPLATE | |
| AREAS CHECKED | |

PLOT DATE = #DATE#
 FILE NAME = #FILE#
 USER NAME = #USER#



STAGE 2
 C = 84.90
 F = 6.05

STAGE 3
 C = 81.87
 F = 2.00

PRIVATE ENTRANCE, LT.
 STA. 1124+12.40

STAGE 2
 C = 70.85
 F = 11.86

STAGE 3
 C = 77.11
 F = 8.03

1124+25.00

1124+12.40

1124+00.00