

F.A.S. RTE.	SECTION	COUNTY	TOTAL SHEETS	SHEET NO.
227	105BR-2	HENRY	31	1

STATE OF ILLINOIS
DEPARTMENT OF TRANSPORTATION
DIVISION OF HIGHWAYS

**PROPOSED
HIGHWAY PLANS**

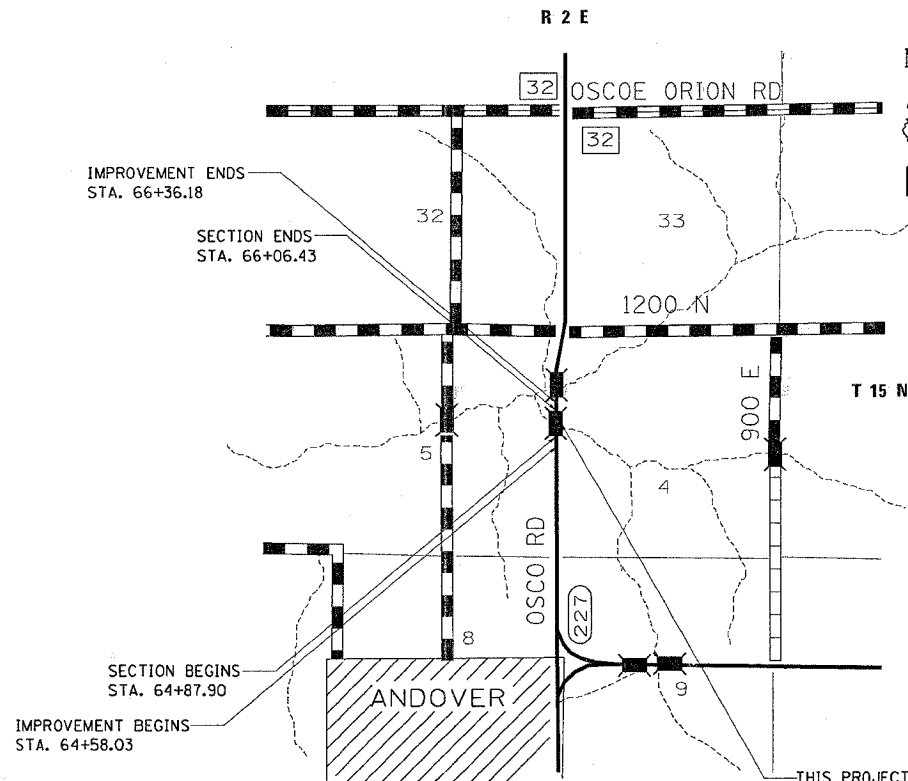
FAS ROUTE 227 (OSCO RD.)
SECTION 105BR-2
PROJECT RS-0227 (110)
HENRY COUNTY
C-92-042-06

INDEX OF SHEETS

- 1 COVER SHEET
- 2 SUMMARY OF QUANTITIES
- 3 GENERAL NOTES
- 4 BITUMINOUS SURFACE REMOVAL & TEMPORARY PAVEMENT TYPICALS
- 5 SCHEDULE OF QUANTITIES
- 6-7 HORIZONTAL & VERTICAL CONTROL SHEETS
- 8 ROADWAY PLAN SHEETS
- 9-12 STAGING DETAILS
- 13 BRIDGE GENERAL PLAN
- 14 STAGING TYPICAL FOR BRIDGE
- 15 BRIDGE RAIL DETAILS
- 16 CONCRETE WEARING SURFACE DETAILS
- 17-19 SUPERSTRUCTURE DETAILS
- 20 SILICONE JOINT SEALER DETAILS
- 21 NORTH ABUTMENT REPAIR DETAILS
- 22 SOUTH ABUTMENT REPAIR DETAILS
- 23 PIER REPAIR DETAILS
- 24 TEMPORARY CONCRETE BARRIER DETAILS
- 25 TEMPORARY BRIDGE RAIL DETAILS
- 26 BAR SPLICER ASSEMBLY DETAILS
- 27 ANCHOR BOLT DETAILS
- 28 EXISTING BRIDGE RAIL DETAILS
- 29 WITNESS MARKER FOR PERMANENT SURVEY MARKERS TYPE 2 (38.4)
- 29 STOP LINE FOR TEMPORARY SIGNALS (99.4)
- 29 ENTRANCE SIGN FOR USE WITH TEMPORARY SIGNALS (75.2)
- 30-31 TYPICAL PAVEMENT MARKINGS (41.1)

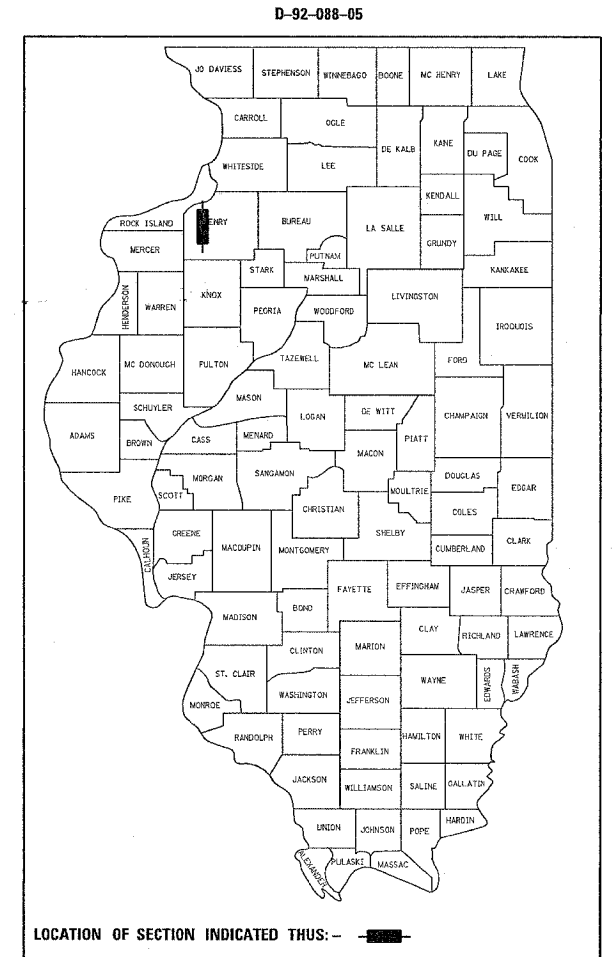
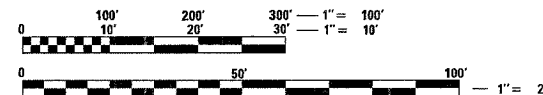
STATE STANDARDS

- 001001 AREAS OF REINFORCEMENT REBARS
- 001006 DECIMAL OF AN INCH AND A FOOT
- 420001-06 PAVEMENT JOINTS BARRIER
- 515001-02 NAME PLATE FOR BRIDGES
- 631032-01 TRAFFIC BARRIER TERMINAL, TYPE 6A
- 635006-02 REFLECTOR AND TERMINAL MARKER REPLACEMENT
- 635011-01 REFLECTOR MARKER AND MOUNTING DETAILS
- 667101 PERMANENT SURVEY MARKERS
- 701006-02 TYPICAL APPLICATION OF TRAFFIC CONTROL DEVICES
- 701201-02 TYPICAL APPLICATION OF TRAFFIC CONTROL DEVICES
- 701301-02 TYPICAL APPLICATION OF TRAFFIC CONTROL DEVICES
- 701311-02 TYPICAL APPLICATION OF TRAFFIC CONTROL DEVICES
- 701321-08 TYPICAL APPLICATION OF TRAFFIC CONTROL DEVICES
- 702001-05 TRAFFIC CONTROL DEVICES
- 704001-02 TEMPORARY CONCRETE
- 720011 METAL POSTS FOR SIGNS, MARKERS & DELINEATORS
- 780001-01 TYPICAL PAVEMENT MARKINGS
- 886001 DETECTOR LOOP INSTALLATIONS
- 886006 TYPICAL LAYOUT FOR DETECTION LOOPS



THIS PROJECT INCLUDES THE REMOVAL AND REPLACEMENT OF SUPERSTRUCTURE ON BRIDGE (SN 037-0083) CARRYING OSCO ROAD OVER CAMP CREEK LOCATED 1.2 MILES NORTH OF 81 JUNCTION

GROSS LENGTH OF SECTION = 118.53 FEET = 0.022 MILES
NET LENGTH OF SECTION = 118.53 FEET = 0.022 MILES



STATE OF ILLINOIS
DEPARTMENT OF TRANSPORTATION
DIVISION OF HIGHWAYS

SUBMITTED December 19, 2005

Theron R. Mountain
DEPUTY DIRECTOR OF HIGHWAYS, REGION ENGINEER

February 3, 2006
Mike Hine
ENGINEER OF DESIGN AND ENVIRONMENT

February 3, 2006
Michael R. Sess
DIRECTOR OF HIGHWAYS, CHIEF ENGINEER

**PRINTED BY THE AUTHORITY
OF THE STATE OF ILLINOIS**

PLANS ENGINEER: ROBERT WAGNER

SQUAD LEADER: MIKE YUSEF
PHONE: (815) 284-5354

PROJECT ENGINEER: THOMAS HALLA
PHONE: (815) 284-5993

FULL SIZE PLANS HAVE BEEN PREPARED USING STANDARD ENGINEERING SCALES. REDUCED SIZED PLANS WILL NOT CONFORM TO STANDARD SCALES. IN MAKING MEASUREMENTS ON REDUCED PLANS, THE ABOVE SCALES MAY BE USED.

J.U.L.I.E.
JOINT UTILITY LOCATION INFORMATION FOR EXCAVATION
1-800-892-0123

HENRY COUNTY
ANDOVER TOWNSHIP, SECTION 15

CONTRACT NO. 64B25