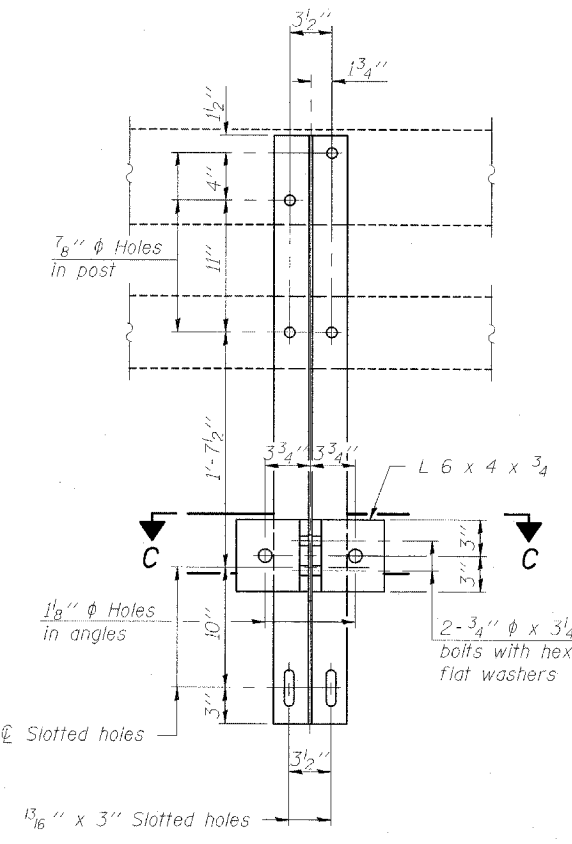
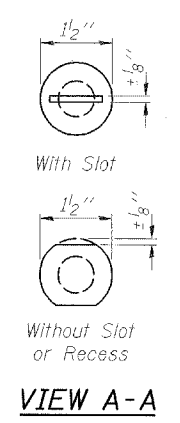
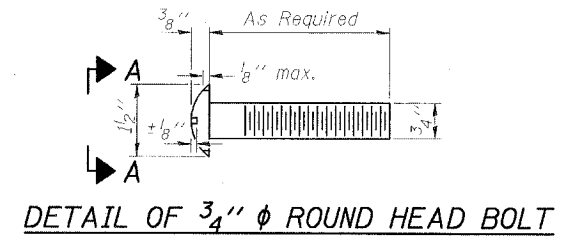
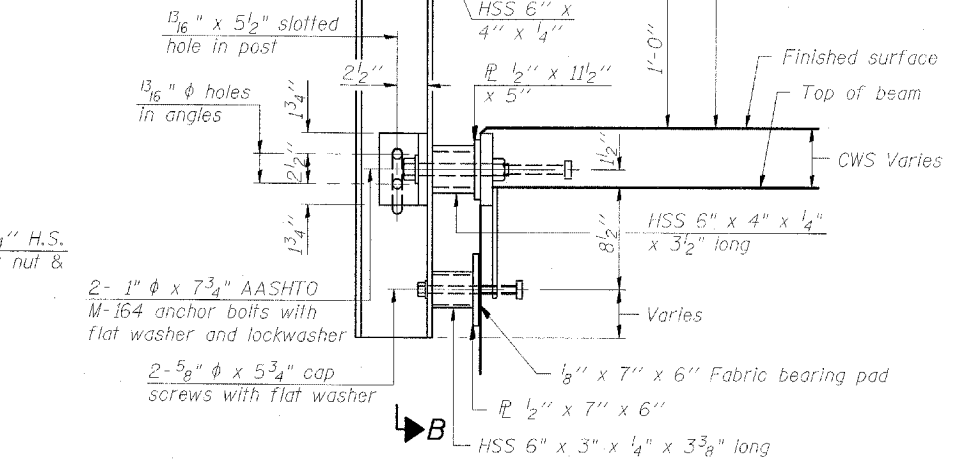


Contract #64B25

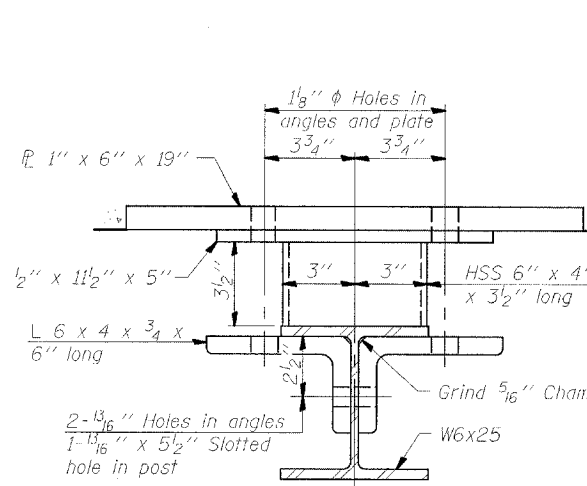


4-3/4" ϕ x 6" Round Head Bolts (With slot or approved recess in head) with locknut & flat washer. 7/8" ϕ holes in hollow structural section to be drilled in the field. Cost included in Steel Bridge Rail, Type SM.

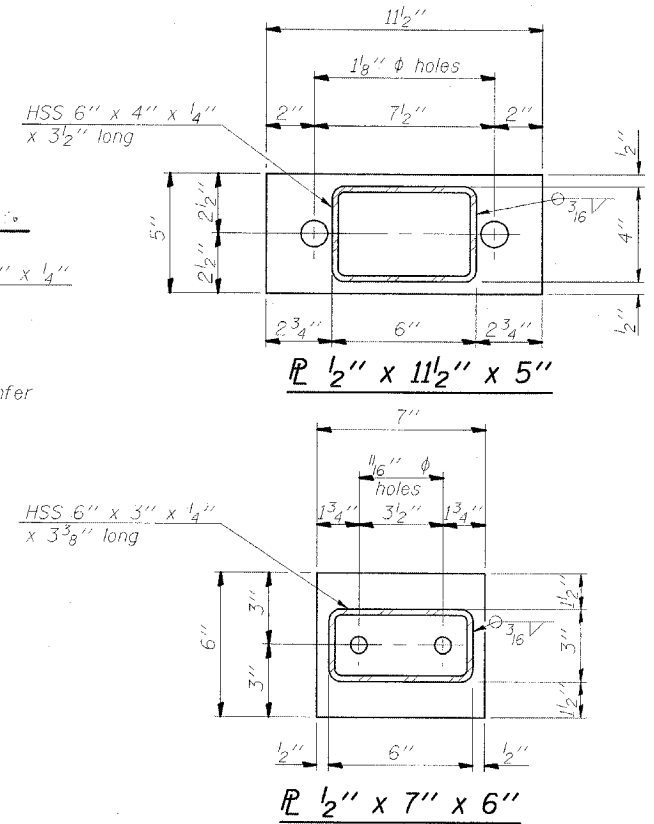


SECTION AT RAIL POST

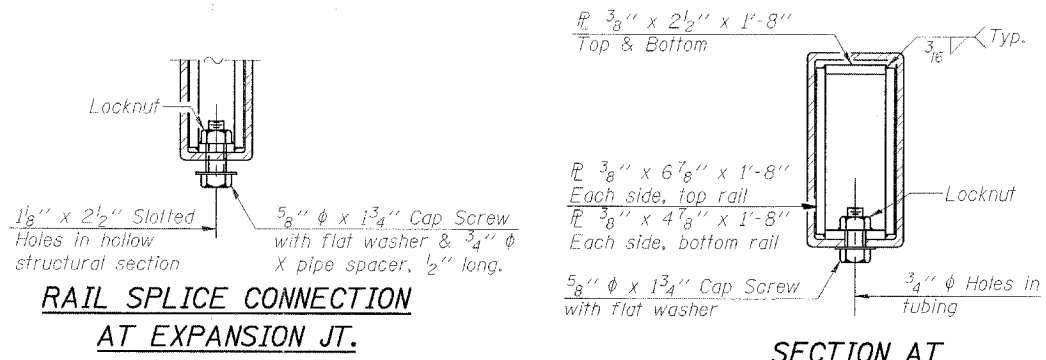
SECTION B-B



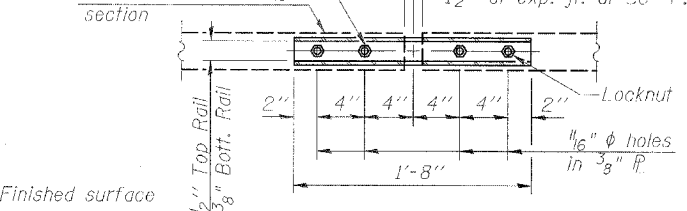
SECTION C-C



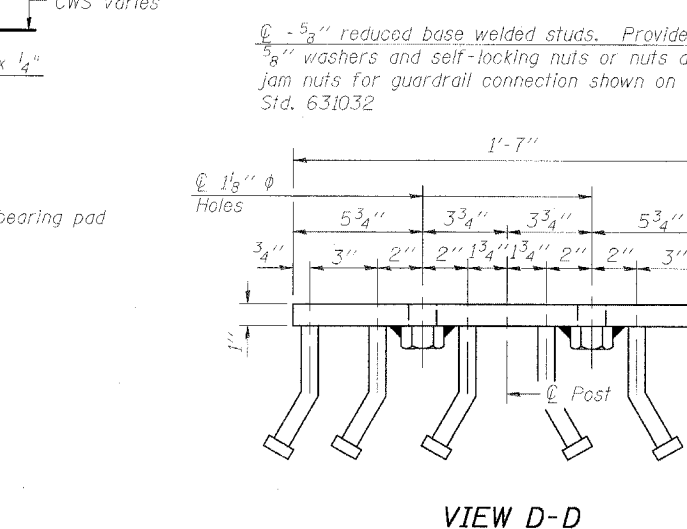
ANCHOR DEVICE



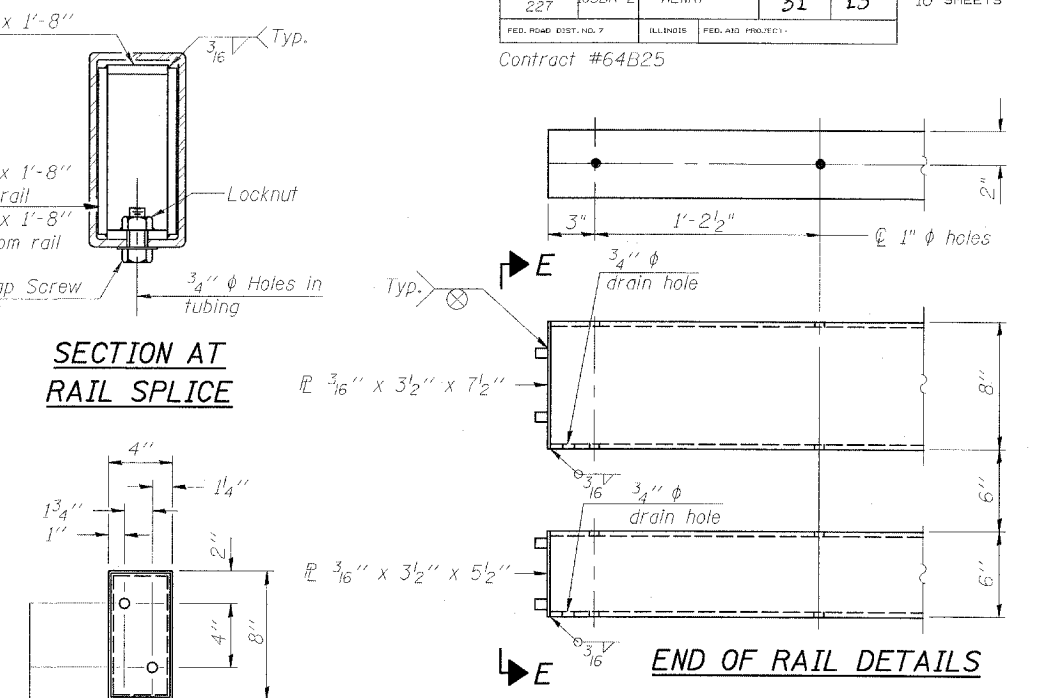
RAIL SPLICE CONNECTION AT EXPANSION JT.



PLAN-BOTT. SPLICE R TYPICAL



VIEW D-D



SECTION AT RAIL SPLICE

NOTES

Hollow structural sections shall conform to the requirements of ASTM designation A 500 Grade B Structural Steel Tubing and shall meet the longitudinal CVN requirements of 15 ft-lbs at 0° F.

All other steel shapes and plates shall conform to the requirements of AASHTO M 270 Grade 36 except posts and angles shall conform to AASHTO M 270, Grade 50.

Bolts, cap screws, and nuts shall conform to the requirements of ASTM designation A 307 except for high strength bolts, nuts and washers noted which shall conform to AASHTO M 164.

All bolts, nuts, cap screws, washers and lock washers shall be galvanized according to AASHTO M 232.

All posts, railing, rail splices, anchor devices and angles shall be galvanized after shop fabrication according to AASHTO M 111 and ASTM A 385. Galvanized rail shall not be painted.

Railing shall be removed, stored and reused according to Section 501 of the Standard Specifications. Cost will be included in the contract unit price per foot for Steel Bridge Rail, Type SM.

All field drilled holes shall be coated with an approved zinc rich paint before erection.

For multi-span bridges, sufficient 1/4" x 6" x 1'-2" galvanized steel shims shall be provided to align rail between adjacent spans. Cost included with Steel Bridge Rail, Type SM.

The 3/4" ϕ high strength bolts used to connect the 6 x 4 x 3/4 angles to the post shall be tightened according to Article 505.04(f)(2) of the Standard Specifications. The 1" ϕ high strength bolts connecting the angles to the concrete shall be tightened to a snug fit and given an additional 1/8 turn. The 5/8" ϕ cap screws in bottom of posts shall be tightened to a snug fit only.

Existing 7/8" ϕ holes in hollow structural steel section shall be filled with new 3/4" ϕ Round Head Bolts with locknut and flat washer.

* Threaded areas shall be plugged or blocked off during casting of beam. Galvanized after fabrication.

BILL OF MATERIAL

Item	Unit	Quantity
Steel Bridge Rail, Type SM	Foot	151

REVISIONS

NAME	DATE

DESIGNED BY: S.L.D. PROJECT NO: 102302
 DRAWN BY: M.E.W. DATE: 12/85
 CHECKED BY: M.M.
 APPROVED BY: M.M.
 ACTIVITY: DETAILS

DRAWING NUMBER: S-3

TYPE SM
 STEEL BRIDGE RAIL SIDE MOUNTED WITH CONCRETE WEARING SURFACE
 F.A.S. ROUTE 227 (OSCO ROAD) OVER CAMP CREEK
 SECTION 105BR-2
 HENRY COUNTY
 STATION 65+47.16
 STRUCTURE NO. 037-0083

CHAMPAIGN, ILLINOIS
 CHICAGO, ILLINOIS
 EVANSVILLE, INDIANA
 INDIANAPOLIS, INDIANA
 KENOSHA, WISCONSIN
 SPRING GREEN, WISCONSIN



(6'-3" Maximum Post Spacing) (5" minimum to 7 1/8" maximum CWS thickness)