

F.A.P. RTE.	SECTION	COUNTY	TOTAL SHEETS	SH
308	109BR-3 & 109BR-4	WHITESIDE	47	N

STATE OF ILLINOIS
DEPARTMENT OF TRANSPORTATION

DIVISION OF HIGHWAYS

PROPOSED
HIGHWAY PLANS

FAP ROUTE 308 (IL 84)
SECTION 109BR-3 & 109BR-4
PROJECT NHF-0308(028)
WHITESIDE COUNTY
C-92-025-06

D-92-092-05

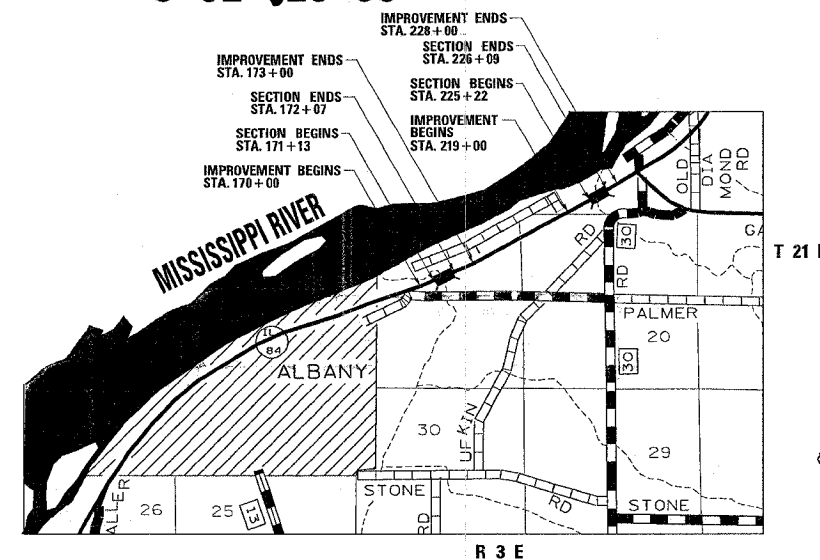


INDEX OF SHEETS

1	COVER SHEET
2	GENERAL NOTES
3-4	SUMMARY OF QUANTITIES
5-6	TYPICAL SECTIONS & STAGING TYPICALS
7	BITUMINOUS CONCRETE SURFACE REMOVAL 2"
8	SCHEDULE OF QUANTITIES
9-10	HORIZONTAL AND VERTICAL CONTROL SHEETS
11-12	ROADWAY PLAN SHEETS
13-16	STAGING DETAILS ROADWAY
17-29	BRIDGE PLANS & DETAILS FOR SN 098-0023
30-41	BRIDGE PALNS & DETAILS FOR SN 098-0022
42	DELINEATOR AND POST (37.4)
42	WITNESS MARKER FOR PERMANENT SURVEY MARKERS TYPE 2 (38.4)
42	INFORMATIONAL WARNING SIGNS (FOR NARROW TRAVEL LANES) (39.4)
42	STOP LINE FOR TEMPORARY SIGNAL (39.4)
43	ENTRTRANCE SIGN FOR USE WITH TEMPORARY SIGNAL (75.2)
44-45	TYPICAL PAVEMENT MARKINGS (41.1)
46-47	CROSS SECTIONS

STATE STANDARDS

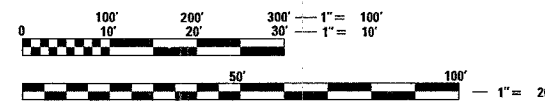
001001	AREAS OF REINFORCEMENT REBARS
001006	DECIMAL OF AN INCH AND A FOOT
420001-06	PAVEMENT JOINTS
515001-02	NAME PLATE FOR BRIDGES
630001-05	STEEL PLATE BEAM GUARDRAIL
630301-03	SHOULDER WIDENING FOR TYPE 1 GUARDRAIL TERMINALS (SPECIAL)
631032-01	TRAFFIC BARRIER TERMINAL, TYPE 6A
635001	DELINEATORS
635006-02	REFLECTOR AND TERMINAL MARKER REPLACEMENT
635011-01	REFLECTOR MARKER AND MOUNTING DETAILS
667101	PERMANENT SURVEY MARKERS
701006-02	TYPICAL APPLICATION OF TRAFFIC CONTROL DEVICES
701201-02	TYPICAL APPLICATION OF TRAFFIC CONTROL DEVICES
701301-02	TYPICAL APPLICATION OF TRAFFIC CONTROL DEVICES
701311-02	TYPICAL APPLICATION OF TRAFFIC CONTROL DEVICES
701321-08	TYPICAL APPLICATION OF TRAFFIC CONTROL DEVICES
701326-02	TYPICAL APPLICATION OF TRAFFIC CONTROL DEVICES
702001-05	TRAFFIC CONTROL DEVICES
704001-02	TEMPORARY CONCRETE
720011	METAL POSTS FOR SIGNS, MARKERS & DELINEATORS
780001-01	TYPICAL PAVEMENT MARKINGS
886001	DETECTOR LOOP INSTALLATIONS
886006	TYPICAL LAYOUT FOR DETECTION LOOPS



THIS PROJECT INCLUDES THE REMOVAL AND REPLACEMENT OF SUPERSTRUCTURES ON BRIDGES CARRYING IL 84 OVER:
 -CEDAR CREEK LOCATED 1.5 MILES NORTH OF ALBANY (SN # 098-0022)
 -SPRING CREEK LOCATED 0.5 MILES NORTH OF ALBANY (SN # 098-0023)
 WITH GUARDRAIL UP DATES

GROSS LENGTH OF SECTIONS = 181 FEET = 0.034 MILES

NET LENGTH OF SECTIONS = 181 FEET = 0.034 MILES



PLANS ENGINEER
ROBERT WAGNER

SQUAD LEADER
MIKE YUSEF
(815) 284-5343

PROJECT ENGINEER
THOMAS HALLA
PHONE: (815) 284-5993

FULL SIZE PLANS HAVE BEEN PREPARED USING STANDARD ENGINEERING SCALES. REDUCED SIZED PLANS WILL NOT CONFORM TO STANDARD SCALES. IN MAKING MEASUREMENTS ON REDUCED PLANS, THE ABOVE SCALES MAY BE USED.

J.U.L.I.E.
JOINT UTILITY LOCATION INFORMATION FOR EXCAVATION
1-800-892-0123

WHITESIDE COUNTY
GARDEN PLAIN TOWNSHIP, SECTION 19 & 20

CONTRACT NO. 64B29

STATE OF ILLINOIS
DEPARTMENT OF TRANSPORTATION
DIVISION OF HIGHWAYS

SUBMITTED December 29, 2005

Henry Z. Muntz
DEPUTY DIRECTOR OF HIGHWAYS, REGION ENGINEER

February 3, 2006
Mike Hine
ENGINEER OF DESIGN AND ENVIRONMENT

February 3, 2006
Milton R. Shea P.E.
DIRECTOR OF HIGHWAYS, CHIEF ENGINEER

PRINTED BY THE AUTHORITY
OF THE STATE OF ILLINOIS