

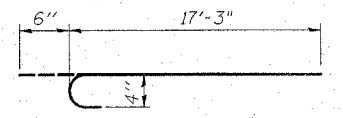
Contract #64B29

**CONCRETE WEARING SURFACE
BILL OF MATERIAL**

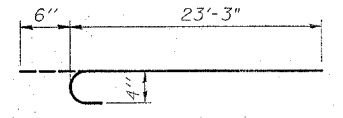
Bar	No.	Size	Length	Shape
a(E)	53	#4	17'-9"	
a ₁ (E)	53	#4	23'-9"	
a ₂ (E)	3	#5	17'-3"	
a ₃ (E)	3	#5	23'-3"	
b(E)	84	#4	26'-10"	
Reinforcement Bars, Epoxy Coated		Pound	3,100	
Concrete Wearing Surface		Sq. Yd.	239	
Bar Splicer		Each	56	

Reinforcement bars designated (E) shall be epoxy coated.

Bars indicated thus 1 x 2-#5 etc. indicates 1 line of bars with 2 lengths per line.



d(E) BAR



a₁(E) BAR

MIN. BAR LAP	
#4 Bar	= 1'-8"
#5 Bar	= 2'-2"

CONCRETE WEARING SURFACE

F.A. 308 (IL 84)
OVER SPRING CREEK
SEC. 109 BR-4
WHITESIDE COUNTY
STATION 171+60.57
STRUCTURE NO. 098-0023

CHAMPAIGN, ILLINOIS
CHICAGO, ILLINOIS
EVANSVILLE, INDIANA
INDIANAPOLIS, INDIANA
KENOSHA, WISCONSIN
SPRING GREEN, WISCONSIN

REVISIONS		DATE	DRAWING NUMBER
NAME			

NOTE: DIMENSIONAL DATA IS NOT TO BE OBTAINED BY SCALING ANY PORTION OF THIS DRAWING.

DESIGNED BY:	S.L.D.	PROJECT NO.:	102302
DRAWN BY:	M.E.W.	DATE:	9/25
CHECKED BY:	M.M.		
APPROVED BY:	M.M.		
ACTIVITY:	DETAILS		

S-4

